

TRACKS



Inter City Railway Society – Sep 2018



Inter City Railway Society

founded 1973

www.intercityrailwaysociety.org

Volume 46 No.7 Issue 545 Sep 2018

The content of the magazine is the copyright of the Society

No part of this magazine may be reproduced without prior permission of the copyright holder

President: **Simon Mutten** - simonmutten@btinternet.com (01603 715701)
Coppercoin, 12 Blofield Corner Rd, Blofield, Norwich, Norfolk NR13 4RT

Treasurer: **Peter Britcliffe** - treasurer@intercityrailwaysociety.org (01429 234180)
9 Voltigeur Drive, Hart, Hartlepool TS27 3BS

Membership Sec: **Colin Pottle** - membership@intercityrailwaysociety.org (01933 272262)
166 Midland Road, Wellingborough, Northants NN8 1NG Mob (07840 401045)

Secretary: **Christine Field** - secretary@intercityrailwaysociety.org
contact details as below for Trevor

Chairman: filled by senior officials as required for meetings

Magazine:
Editor: **Trevor Roots** - editor@intercityrailwaysociety.org (01466 760724)
Mill of Botary, Cairnie, Huntly, Aberdeenshire AB54 4UD Mob (07765 337700)

Sightings: **James Holloway** - sightings@intercityrailwaysociety.org (0121 744 2351)
246 Longmore Road, Shirley, Solihull B90 3ES

Photo Database: **Colin Pottle**

Books:

Publications Manager: **Trevor Roots** - publications@intercityrailwaysociety.org

Publications Team: **Trevor Roots / Eddie Rathmill**

Website / IT:

Website Manager: **Trevor Roots** - website@intercityrailwaysociety.org contact details as above

Social Media: **Gareth Patterson**

Yahoo Administrator: **Steve Revill**

Sales Manager: **Christine Field** contact details as above for Trevor

Visits Co-ordinator: **Trevor Roots / Christine Field / Tony Whitehead**

Contents:

Officials Contact List.....	2	Exported Locos.....	23-25
Society Notice Board.....	3-4	Grumpy Gricer Corner.....	34
Events.....	4	Mainline Changeover.....	42
ICRS Sales.....	80	Narrow Gauge Matters.....	34
Regular Current News / Sightings:		Off The Beaten Track.....	51-52
Eastleigh Works Report.....	6-10	OTP Photo Spot: 1.....	54-55
Franchise / Network News.....	5	OTP Photo Spot: 2.....	61
Freight Matters.....	53	Photo Spot: NR Test Trains.....	29-30
Infrastructure News.....	31-34	Rail Tour News.....	11
Light Rail & Metro News.....	49-50	Railway Outposts: Update.....	43-45
Out & About Sightings.....	36-41	Railways & Museums.....	27-28
Stock Changes.....	56-58	Ramblings of a Rail Enthusiast.....	18-22
Liveries.....	59-61	RHTT Gallery.....	10
New Stock.....	58	Shunter Spot.....	47-48
Transfers.....	61	Signal Box Survey.....	55
Technology News.....	5	Std Preservation:	
Traffic & Traction News.....	12-17	News.....	46
Underground News.....	49	Photo Spot: Steam.....	17
Other Feature Articles:		Stock Moves.....	26
Days Out.....	25	Test Vehicle Profile.....	35

Front Cover Photo: 86259 'Peter Pan' 'Les Ross' changing traction at Carnforth in favour of 4-6-0 45699 'GALATEA' on the Cumbrian Mountain Express, one of the three rail tours run to mark the 50th Anniversary of the ending of steam on BR, 11th August 2018

£2.50 where sold separately

Printed & distributed in the UK by Henry Ling Limited, at the Dorset Press, Dorchester DT1 1HD

SOCIETY NOTICE BOARD

Editor's Comments: After patiently waiting for mags to appear during the first half of 2018 you are now getting a glut of them with the rebirth of the monthly **TRACKS** schedule and the last of the **extra** issues, the **Summer** issue. That is three mags in the space of four weeks and a total of 176 pages....I've now got square eyes. But this has enabled me to get a few pending bits and pieces into print, updates to previous articles as well as kick starting two long running series **RAMBLINGS OF A RAIL ENTHUSIAST** and **NSE LIVERIES**. Hopefully I can keep these going as the good news on going monthly again is that the expected total of 608 pages for 2018 will rise to 640 if the remaining 3 issues are 64 pages and in 2019 the expectation is at least 704 pages possibly 736 if a couple of issues are 80 pages. At least the erratic production schedule should now settle down again.

Our first visit to Carnforth was a success but as insisted on by the owner of WCR we cannot report anything let alone thank them. It is understandable that photos within the site are not allowed but we were not permitted to even show our group photo taken at the station. Suffice to say that the relevant stock all bar a few items is listed in our books and I was able to confirm that some coaches had been re-numbered so can amend our books for future editions. If any member wishes to know what was there, in particular those who went who don't have email then please contact me to confirm identities but I cannot publically provide a detailed stock list. In total there were 232 items, 41 diesel locos including 2 industrials, 16 steam locos including 6 industrials, 150 carriages plus 5 stored unidentified and 2 underframes also unidentified, 2 cranes and 9 wagons plus 3 underframes. Of the remaining operational stock not seen during our visit, 13 diesel locos, 3 steam locos and 75 coaches at least some can be accounted for on the tours (see **RAILTOUR REPORT**) plus the Northern Belle rake was out on a tour to Fountains Abbey. Other stock is in use with the Jacobite steam trips based at Fort William. With 3 more visits now arranged for 2019 (see **EVENTS**) it is hoped the rotation of stock in and out of Carnforth will allow most to be seen.

Obviously this issue was at the printers whilst we attended our annual Eastleigh bash and will be reported in the Oct issue, but it looks like being the best attended event ever, hopefully the weather was kind.

Errata:

Mar / Apr 2018 p63, the Corrective Rail Grinder should be 4 cars so numbered DR 79401-79404

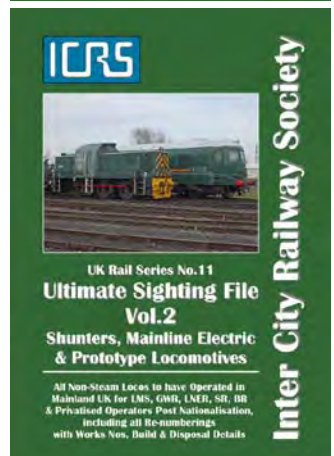
Jul / Aug 2018 p5 Stan Brown should be Bown. p66, 33.70.4938 742-2 was re-numbered to 31.70.4938 113-8, not the other way round, p66, 394518/571 are still MHA not MPA.

Publications: I didn't have room in the last issue to show the covers of the new USFs, which don't appear on the rear cover of **TRACKS** so here they are for those not able to look online. A sample page of data and the Cross Ref Table from UKRS10 Vol.1 is also included at the back of this issue.

Membership Matters: New Members:

(* ex-members re-joined) (AFC – Additional Family Child, AFA – Additional Family Adult)

Olan Kenny (Ambleside), Andrew Luckham (Slough), Bradley Marshall (Yeovil), David Moyle (Southport), Eric Salisbury* (London), Michael Smith (Bolton), Stephen Wilkins* (Gloucester), Brian Wood (Fleetwood) - a warm welcome to you all.



Society Magazine TRACKS:

TRACKS is distributed direct from the printers to members in a clear plastic wrapping with an address carrier sheet (reverse printed with a Renewal / Reminder form if appropriate). If any member fails to receive their copy after one week from the estimated delivery date below then please contact the Editor. For current info during the month refer to the TRACKS page of our website.

Next issues: Oct, Nov & Dec (making 10 issues for 2018)

The latest date for articles / info for the **Oct 2018** issue is **Friday 28th September 2018**
with delivery to members after **Wednesday 10th October 2018**
please check the **TRACKS** page on the website for date of posting from the printers

Magazine Contributors: Thanks to **Chris Addoo, Ian Bain, Brian Bentley, David Berg, Phil Bonsall, Paul Clifton, Peter Cole, Spencer Conquest, Danny Coyne, Peter Davis, Sean Davies, Dennis Dey, Derek Everson, Martin Evans, Iain Gardiner, Barry Hayward, James Holloway, Geoff Hope, Nigel Hoskins, Harold Hull, Colin James, Alan Jones, Chris Jones, Terry Lea, Steve Lord, Ian McAlpine, Lawrence McCormick, Stuart Moore, Gervase Orton, Robert Parker, Keith Partlow, Gareth Patterson, Colin Pidgeon, Colin Pottle, Toby Radziszewski, Paul Rosser, Norman Smith, Ray Smith, Dave Spencer, Graham Stockton, Paul Sumpter, Paul Tisserant, Carl Watson, David Williams, Bill Wilson, Peter Wreford & Trevor Roots.** We are sorry if anyone has been missed. Photos not credited are by **Trevor Roots**.

EVENTS

All 2018 events organised, either confirmed or with provisional dates are shown below. Further events may be added in due course between issues of **TRACKS** so keep an eye on our website. **PLEASE DO NOT** try to book places for Members Only Visits with provisional dates shown by TBC until they are formalised or where the event though confirmed is many months in advance with details yet to be provided. Once they have, **BOOKING OPEN** will be shown alongside and a request will be made for you to book your place.

Please note that there is no excuse for booking then not notifying us you cannot then attend or have been delayed travelling on the day, genuine reasons apart. As with events where numbers need to be accurately known by the hosts for a tour, food or room capacity this is not acceptable. We have tried to ease the official's organising burden and saving you money in postage by allowing members to pay on the day, but this can be abused as it can be then seen as nothing to lose if you can't be bothered to turn up. We still wish to save time and your money, so we will still try to allow payment on the day but **for those who do not turn up and do not have the courtesy to contact us at the time or afterwards will not be welcome to book future tours without a non-returnable payment up front.**

We dropped the idea of providing our bank details in **TRACKS** again as it seems no sooner than we publish these that we get spurious direct debits appear on the Society bank account. It happened before so if it is a member then that is extremely disappointing. If anyone wants to pay for anything up front then we can provide the bank details on request.

MEMBERS ONLY VISITS

West Coast Railways, Carnforth: New dates for 2019 BOOKING OPEN

Sat 26th Jan, 11th May & 10th Aug:

Following our successful first visit in August 2018 we have organised 3 more for 2019. Again the places are limited to 30 but this is the right number having experienced it firsthand as it allowed questions to be asked of our guide and prevented getting in each other's way...well not too much !! The cost is £20 payable on the day.

For the **Jan** visit and due to a shorter day meet at Carnforth Station at 10.35 for a 11.00 start. For the **May & Aug** visits meet at 11.25 for an 11.45 start. The tour will take approx. 3 to 3½ hours so **if you are travelling by train please arrange your return accordingly. Needing to leave early caused problems but we got away with it once and we don't want to risk future visits.** There is paid parking at the station or free spaces can be found nearby.

Hi-viz, sturdy footwear and hard hat / bump cap must be worn. We have stocks of hi-viz vests and bump caps to purchase so contact Trevor for more details. **All photos taken are for private use ONLY, no public display either online, in magazines or via social media.**

Bookings will be taken as soon as you read this by whatever means, but it is not first come first served to be fair to those who missed out on the first two visits and the majority of members that will only read this a fortnight after those receiving a pdf version. As we found by trial and error for the first two visits we don't need to do a lottery but the final list for each date will be juggled to allow everyone's preference to be catered for so please be patient. There is plenty of time to make travel plans / book accommodation if needs be. Those on the waiting list will get first pick. If you can't make any of the dates then you can be put on a reserve list either for cancellations or future visits. If you want to be on a reserve list for the 3 dates in the event of a cancellation then make sure you will be available. We actually had two cancellations for the Aug 2018 visit, one at a late stage and no-one on the reserve list was available for this, but it was filled by a new member.

Please apply to Tony Whitehead clearly stating your name, membership number, and importantly a contact telephone number and indicate your preference / availability for the dates shown **Email: anthw884@gmail.com Tel: 07895 386777 but no calls after 20.00 in the evening please** as he will be in bed early as he has to be up for work at 04.30 each morning. Best time to ring is after 18.30 on weekdays. Tony will return your email or tel. call promptly so don't panic. Only if you consistently have any trouble contacting Tony then in the last resort contact Trevor or Christine (details on page 2). We will report back in the Oct issue of **TRACKS** as to how the demand has been.

PRESERVATION GALAS (to be attended with our sales stand) nothing planned

OPEN DAYS (to be attended with our sales stand)

Ramsgate Depot Open Day – Sat 16th Mar 2019

We were approached at the DRS Open Day about attending a Ramsgate Depot Open Day which has been confirmed though no firm details as yet. Possible traction includes steam. Watch this space.

OTHER EVENTS (to be attended with our sales stand)

Warley National Model Exhibition – Sat 24th-Sun 25th Nov 2018

TECHNOLOGY NEWS

In partnership with Eversholt Rail a Cl.321 EMU is to be converted by Alstom as a demonstrator for hydrogen fuel cell/lithium ion battery traction.

One of the Cl.777 750V DC third rail EMUs being built for Merseyrail is to be fitted with a battery to test the case for energy storage and running on non-electrified lines.

Wabtec is to merge with General Electric Transportation (GEC)

FRANCHISE / NETWORK NEWS

Knorr-Bremse is to sell its RailServices (UK) division to Mutares based in Munich. This covers the rolling stock maintenance facilities at Wolverton and Springburn, Glasgow and Kiepe Electric Ltd in Birmingham.

The introduction of Mk5a sleepers is to start on the 28th October 2018 between Euston and Glasgow / Edinburgh. This will mean Cl.90s will no longer be used on the Glasgow services due to incompatible couplers. Inverness, Fort William & Aberdeen will get the coaches in the spring of 2019.

LSL is to acquire modern stock to enable more flexibility, run at higher speeds on the mainline and protect its heritage fleet from overuse. Not available until 2019 LSL is expected to gain a HST set plus Cl.90s and Mk3 coaches.

EASTLEIGH WORKS REPORT

by **Norman Smith** (Photos by **Carl Watson** unless shown otherwise)
for the period from 1st – 24th August 2018

Locos:

01/08 73961 t&t 73962 were on and off site with a NR test train before leaving for Tonbridge West Yard the following day.

01/08 D1935 (47805) + D1944 (47501) + Mk2 3330 (see below) arrived from Crewe Basford Hall.



02/08 66008 returned for its repaint and re-numbering for GBRf.



66008 being re-painted, 20th August

02/08 59003 left for Westbury after a minor repair. It was back in 12 days later for more work.

- 03/08 47749 arrived for rail tour duty but was not required. The loco returned to Leicester LIP with 47727 three days later.
- 07/08 37175 t&t DBSO 9714 were on and off site with a NR test train before leaving for Reading Triangle Sidings on the 9/8. They returned two days later to stable for the weekend and left for Hither Green PAD on the Monday.
- 08/08 66787 (ex 66184) in its new GBRf livery left for Westbury.
- 16/08 73213 arrived from Tonbridge West Yard.
- 21/08 66741 arrived for an exam, departing the following day.



- 21/08 The cabs from 66734 arrived by lorry (see above) from EMD Longport, Stoke-on-Trent for painting. They have been repaired and adapted to be used as test driving simulators. The photos below and opposite top, taken on the 6th July 2012, are a reminder of how 66734 ended its days in the derailment on the 28th June 2012 caused by a landslide which saw it hanging on the side of Loch Treig. For the full report see the August 2012 issue p24.





23/08 66741 is back, this time for a minor repair.



above left 37901 in the paintshop, 23rd August, above right 73101 on jacks, 21st August



Coaches:

Coach Trips in/out during August were:

01/08 D1935 (47805) brought in Mk2F FO 3330 from Crewe Basford Hall.

Riviera Trains stock moves for this period, including loco:

04/08	47727	GBRf	"The Dub and Grub"	(back with 50007/049)
11/08	67002	Pathfinder Tours	"The Settle & Carlisle Golden Express I.	
11/08	66060/135	UK Railtours	"The Walsall Concerto"	(returned by 66135)
18/08	66007	Torbay Express Ltd	"The Torbay Express"	(returning above on 20/08)

Underground: Movement of Spoil & Ballast Wagons for this period:

Arrivals: 240/251/255/256/259/270/287

Departures: 242/244/248 (see below) /256(twice)/266



above overhauled 248 between 259 & 239, 13th August

right BSK 35333 under overhaul, 2nd August

below JSA 4119 the last to arrive for conversion, along with others waiting to be done, 21st August



Wagons: Wagon Trips in/out during August were:

01/08 Bogie Sliding Hood JSA VTG 4119 arrived by road for modifications (see above)
02/08 DBC in 87.4333.054-2/056-7 DBC out 87.4384.026-2 FL out 93426/457
09/08 FL in 92552/613
10/08 FL in 66597 with 370022/024/043/054/072/104/113/142/155/157 from York Yard South
16/08 FL in 93448 FL out 93456/487
20/08 FL in 66503 with 370123/207/177/247/063/215/093/193/069/044
23/08 FL in 93403 FL out 93458

HHA 370123, 23rd August
now scrapped



below converted JSA 4028, 13th August

Scrapped on site by Raxstar during the month: 370022/024/040/043/044/048/051/061/065/069/070/093/113/123/136/155/157/193/200/215
Bodies Grounded: 370054/072/104/142

Units: Siemens Units receiving modifications during the month: 444007/015/026, 450020/024/074/085/099/126

OTP: 73961 took Stoneblower DR 80210 to Ashford Crane Depot on the 12th



RHTT GALLERY

Yes remarkably there is already activity ahead of this autumn's leaf fall season with 57007 passing Lancasters Crossing, Stowmarket at 16.13 on 6221 09:58 York Thrall - Stowmarket DGL on the 28th August 2018 hauling FEAs 642024/47/44/11/50/36/19/41 (Keith Partlow).



RAIL TOUR NEWS

50th Anniversary of the Ending of BR Steam:

On a gloriously sunny day we paid our first official ICRS visit to the West Coast Railways (WCR) facility at Carnforth and yet again in 2018 we were lucky with the weather. My only other visit was the Open Day on the 26th July 2008. Interestingly that event was to celebrate the 40th Anniversary of the ending of steam on BR and it was a coincidence that our visit coincided with the 50th Anniversary to the day on the 11th August 1968 of the 15 guinea special.

To celebrate the occasion three steam tours were run on the Saturday, two of which were seen prior to our visit in Carnforth station. At 10.44 Gresley A4 4-6-2 60009 'UNION OF SOUTH AFRICA' + 66172 (fire risk) + Riviera coaching stock 35486 + 21269 + 3066 + 3068 + 1671 + 3123 + 3121 + 3146 + 3149 + 3112 + 1813 + 4949 + 4991 passed north on the Settle & Carlisle Golden Express from Bristol Temple Meads to Appleby. 60009 was added at Preston. At 11.00 86259 'Peter Pan / Les Ross' arrived south of the station on the Cumbrian Mountain Express from London Euston to Carlisle where it swapped with WCR 4-6-0 Jubilee 45699 'GALATEA' + 47746 (fire risk) + 80217 on the Goods Lines. The coaching stock was 13320 + 99125 + 99316 + 99347 + 348 + 99352 + 1861 + 5032 + 99328 + 99723. With a lot of WCR stock operating around the country it was good to get this in addition to what was to be seen on the depot. The third rail tour 'The Waverley' running from York to Carlisle was also WCR stock with Jubilee 4-6-0 45690 'LEANDER' + 47237 (fire risk) + 17025 + 3143 + 3136 + 1961 + 99371 + 99128 + 99350 + 99311 + 99327 + 4984 + 9392.



4-6-2 60009 'UNION OF SOUTH AFRICA' + 66172 passing at speed through the platform-less side of Carnforth



above 4-6-0 45699 'GALATEA' + 47746 + 80217 backing onto the Cumbrian Mountain Express coaches waiting on the Goods Lines with the WCR depot behind

TRAFFIC & TRACTION NEWS

August 6

56049 + 50017 + 50050 + 56096 passed Walsall at 13.53 on an Eastcroft Depot circular trip via Crewe (Dave Williams)



August 7

59204 + 59005 passed Reading at 15.31 on 6C76 14.39 Acton – Whatley (photo at end)

August 8

A sight that will be rarer in the future and not with a full 9 car set, 43041 t&t 43154 pass Dawlish at 15.49 on 1A91 Plymouth - Paddington (photo at end)

August 10

88004 + 88002 passed Silverdale Level Crossing at 10.04 with 2 FNA flasks (photo at end)
66074 arrived at Swindon at 09.35 on 6B49 Llanwern - Swindon (Colin Pidgeon)



August 11

66519 passed Tame Bridge Parkway at 16.06 on Felixstowe – Crewe Basford Hall liner (Paul Clifton)



57604 on 2C51 to Penzance was seen at Exeter St David's at 17.31 (Spencer Conquest)



August 12

57314 t&t 47832 were seen at 13.55 on 1Z35 Paddington – Paddington Northern Belle via, Swindon (photo at end)

August 13

A view not illustrated before of Dollands Moor Depot from a passing Eurostar with an unidentified CI.92, 9204x (Derek Everson)



374028 (*above*) was seen inside the barriers at St Pancras Int at 16.26 having arrived as the 14.56 (Belgium time) from Brussels due at 16.05

but there were so many people trying to get on the service it did not leave until 15.05 arriving at 16.15 (Derek Everson)

67024 + 67021 were seen in Dollands Moor Yard at 15.34 from a passing Eurostar (photo at end)

August 14

66183 was seen arriving at Hoo Jnct Up Yard from Tolworth Sidings at 13.38 (photo at end)

950001 passed Didcot at 11.34 (Spencer Conquest)



66622 arrived at Walsall at 14.10 on 09.19 from Hope Earles Sdgs showing the continuing electrification infrastructure (David Williams)



August 16

47237 & 47245 were seen stabled at York at 13.40 (Steve Lord)



August 18

66057 + 4-6-2 35028 + 17096 passed Swindon at 11.15 on 5Z54 Stewarts Lane - St Phillips Marsh (photo at end)

August 19

66150 passed Eastleigh at 09.05 on 6N01 Swaythling - Eastleigh East Yard (Chris Addoo)



August 21

37611 having failed on 0H72 Leicester - Wembley and terminated at Ridgemont was seen passing Wellingborough at 11.06 (Colin Pottle)



August 22

37601 passed Walsall at 11.48 on a Leicester LIP round trip (Peter Davis)



August 24

66715 passed Chertsey at 14.52 (Sean Davies)



August 25

D9009 passed Scremerston to the south of Berwick-upon-Tweed at 17.36 on 1Z42 'Deltic Retro Scot III' charter from Edinburgh - Preston (photo at end)

August 28

66136 passed Newport at 15.34 on East Usk Birdport – Trostre (Chris Jones)



66539 + 66515 + 66503 + 66558 passed Eastleigh at 13.05 on Crewe – Southampton liner (photo at end)

D6515 + 37668 passed Eastleigh at 13.27 on their way to Wareham where 37668 would rescue 47580 from Weymouth and D6515 would return to SWR (Derek Everson)



News from Norfolk (Stuart Moore):

August began with the visit of the UTU set powered by 37521 on the 1st (see below). It was noted in the yard along with its unidentified DBSO and 37038 and 37407. The short set was in the care of 37409 and 37419 at the time.



Also noted on the 1st was 66784, the first visit of one of the former DBC re-numbered Cl.66s, on the Harwich to North Walsham empty tanks. It was noted again on the 2nd running to Harwich with the loaded tanks along the bank at Caistor St Edmunds (see photo at end).

By the 6th August 37409 had been swapped out for 37407 on the short set. Also noted was 66099 on the Peak Forest Norwich stone train.

On the 7th 37423 arrived and was noted in the Royal Dock siding. On the 10th the full DRS compliment for Norwich was noted with 37038 37407/409/419/423 all present in the station or the adjacent yard. 37419 was operating on the short set with a temporary headlight on the front suggesting the loco's light was inoperable.



above 37407 t&t 37423 Buckenham (16.16) 11th August 2018

On the 11th 37419 had been swapped out of the short set and replaced by 37423 but this was to be a short swap as by the 13th 37419 was back on (having been turned) and 37423 was located back in the yard keeping company with 37038. Later on the 13th 37423 and 37409 ran light to Crewe Gresty Bridge via London.

The 16th saw the monthly gauging train, this month operated by 37099 and 37116 (see **PHOTO SPOT: TEST TRAINS**). It was noted running through Brundall at 17.44 two minutes before 37407 and 37419 ran through with the 17.36 Norwich to Great Yarmouth commuter service.

Finally after a week in North Wales I visited Norwich Station on 25th and noted 37424 was now on the short set along with 37405, so a total change of locos in a week! 37407 was noted in the yard and 37038 had been moved into the Royal Dock.



66784 Caistor St Edmunds (14.48) 2nd August 2018 (Stuart Moore)



88004 + 88002 Silverdale Level Crossing
11th August 2018



above an unusual view from a passing Eurostar of 67024 + 67021 Dollands Moor Yard (15.34)
13th August 2018 (Derek Everson)



66057 + 4-6-2 35028 +
support MK1 coach 17096
Swindon (11.15) 18th August 2018 (Colin Pidgeon)



66183 Hoo Jnct Up Yard (13.38) 14th August 2018 (David Berg)



57314 t&t 47832 on the Northern Belle,
Swindon (13.55) 12th August 2018 (Colin Pidgeon)



59204 + 59005 Reading (15.31)
7th August 2018 (Colin James)



D9009 Scrummerston, Berwick-upon-Tweed
(17.36) 25th August 2018 (Gareth Patterson)



66539 + 66515 + 66503 + 66558
 Eastleigh (13.27) 28th August 2018 (Derek Everson)

right a sight that will soon disappear
 disappear
 43041 t&t 43154 with a full
 8 car HST skirting the south
 Devon seawall at Dawlish
 (15.49) 8th August 2018
 (Chris Addoo)



PRESERVATION PHOTO SPOT: STEAM



left
 Wordsell J27 0-6-0 65894
 is seen at Pickering, NYM
 on the 24th May 2018
 having returned to service
 only a week earlier after a
 12 year overhaul at
 Hopetown Works,
 Darlington though it
 returned in January as a
 kit of parts
 (Gervase Orton)

as it was not needed
 during August it had a
 holiday on the
 Wensleydale Railway
 operating from the 31st
 July until the 27th August
 2018

RAMBLINGS OF A RAIL ENTHUSIAST

by David Spencer - 1988

I try to provide extra detail or follow up photos on the items of traction shown in photos, other than number, date and location as provided by Dave, including what became of them particularly with regards to preservation. This series has now recorded 30 years since starting with 1958 in the Aug 2009 issue with the 1987 instalment in the Oct 2016 issue, so high time this series resumed.

1988: Since 1985 I had been occasionally making notes when linesiding. They were very rudimentary and not terribly helpful for historians of the future but from this year and continuing to date I have kept much fuller records almost every time I visit a station I note time, traction, load, identity of the train and the track or platform it was on. Journey logs I have done on and off, largely off, for many years but again 1988 saw the change and again virtually every time I travel by rail I time the journey, calculate speeds and note if early or late although sometimes I forget to take my watch! In the early days I mainly picked up just stations or junctions and major infrastructure items but nowadays I pick up every timing point I can see, although as it's impossible to get them all, I just do my best. That and photography is now my part in this great hobby of ours.

Although I did not know it at the time this was the last normal year of my life and the first rail day was the 16th March when I spent time at Stafford and Shrewsbury. The one unusual item at the latter were three new Cl.155s 155322 + 155323 + 155324 on a delivery run from Workington to Cardiff Canton (see above) (these were all converted to single car Cl.153s).



47647 Birmingham NS,
16th March 1988 (w/d 12/98, cut 04/00)



31309 'Cricklewood' Shrewsbury,
16th March 1988 (w/d 05/90 cut 04/92)

37895 on empty Cawood containers,
Hereford, 15th April 1988
(w/d 02/03 cut 09/11)



There follows lots of short periods of photos all over the Midlands due partly to a 'Midline day' and its rail rover ticket. On the 23rd April I therefore covered Lichfield, Rugby, Stafford, Stourbridge Jct, Stratford-upon-Avon and Leamington. At Rugby and Stafford I saw my first two CI.90s and then Hastings DEMU 203001 which was operating the normal service between Stratford-upon-Avon and Leamington Spa, the most comfortable ride of the day.



above 203001 Wilnecote, 23rd April 1988
originally built as 6-car 1011 but reduced to 4 cars as
seen, 60014 + 60522 + 60523 + 60015 (not sure
which driving car is leading) all taken into dept service
on withdrawal 06/90 and renumbered
977968/96/97/99 but all cut 08/96, 10/05, 11/94, 08/96
respectively



above 73209 on 07.35 Poole – London
Waterloo, Bournemouth, 6th May 1988
converted to 73961 it is seen in Tonbridge
West Yard, 15th March 2015 (Trevor Roots)



Bournemouth opened its conference centre and our union conference moved there, so in May I had photo opportunities at Bournemouth, Wareham and Swanage.



de-icing unit 002 (ADB 977366 + ADB 977367) Bournemouth Depot, 8th May 1988
originally 4-LAV MBSs 10497 + 10499 the DS 70270 + 70272 (cut 08/93)
it was numbered 003 until 1982 when the first 002 was scrapped



above
33116 + 4-TC 8012 on 11.32
Weymouth – London Waterloo,
Wareham, 9th May 1988

right
33116 is still around as D6535
at GCR seen with 33035
Leicester North, GCR
14th April 2018 (Phil Bonsall)





left
 CI.491 4-TC TBSK 70823
 owned by LT, Kidderminster
 Town SVR, 18th May 2018
 (Trevor Roots)

above & right the two trailer cars that were running in set 8012 in 1988 survive in preservation, these trailers however were subsequently substituted in the confusing last years of the class as cars were swapped around between the dwindling sets



above
 CI.491 4-TC TFK
 70855,
 Swanwick Jnct,
 MRB,
 8th January 2012
 (Trevor Roots)



left 144001 &
 142083 Filey
 30th June 1988

142020 on 17.13 Hull – Scarborough, Bridlington,
 29th June 1988, note the demolition right



On our way up to our Northumberland holiday we stayed briefly with a friend in Bridlington and whilst a strictly a unit area it was new for me. Bridlington station was once massive (see above) with many platforms to handle the holiday traffic extras and Filey with its overall roof, whilst not in the GWR Brunel tradition I was familiar with, it was still an interesting sight (see above middle).



awaiting their fate, CI.485 46 & 41
Sandown, IoW, 10th September 1988

In September we had a holiday in the Isle of Wight I took photos of the ancient ex-London Transport CI.485 stock. To my shame it took until 2009 to go back to see the replacement CI.483s and an awful rough ride they are too!

On the 1st October it was one of the now much missed Network days and I did my usual start at Bletchley and on to Bedford and St Pancras. There was an exhibition at Waterloo with steam, diesels and electric locos and various units and after inspecting them I travelled out to Basingstoke and back. This was followed by the Greenford branch. I then travelled from Liverpool Street to Walton on the Naze on my favourite and very comfortable CI.309 EMUs, changing to a CI. 312 at Thorpe-le-Soken for the branch.

The following weekend was a Bescot open day with the usual open day goodies that subsequently become the norm...*until that all ended, ed!!*

In those days there still a lot of extra trains put on for special events and on 24th October I spent three and a half hours at Birmingham International to see the Motor Show extras and though nothing rare was seen there was plenty of action to view. I must have enjoyed it as I spent the same time at Birmingham New Street on the 12th December.

The health of my wife had deteriorated and she had to give up work. As I didn't enjoy commuting alone by car I gave up my free office car parking space (my colleagues thought me mad) and started to commute by rail, which I continued to do until I retired for the first time in 1995. Rather than use my local station at Redditch, 3 miles from home, which was in those days a slow and tedious DMU. I drove

37903 Bescot Open Day,
9th October 1988
(w/d 12/99, cut 10/05)



six miles to Earlswood on the Stratford-upon-Avon line and travelled into Birmingham Moor Street. That way I could take advantage of cheaper CENTRO fares. Ironically only half of the station was in the CENTRO area, the southbound platform. The northbound platform was not and it was one of only three unstaffed stations under CENTRO control.

photos (unless shown otherwise) are by Dave Spencer (to be cont)

EXPORTED LOCOS

Italian Shunters by Peter Wreford:

In 2015, Her Majesty the Queen decided that, in the best interests of national security, I needed to be assigned to the NATO headquarters near Naples, Italy. My first thought on being told the news was that I was being given a wonderful opportunity to spend a couple of years exploring the country looking for those elusive old British shunters which had been exported decades ago (well, it may actually have been my second thought).

Sadly, after much exploring, it transpired that there were only four engines left, with the future of two of these appearing to be quite precarious but a third already now back in the UK. So if any members who have not seen these shunters and who have still to plan your summer holidays, might I suggest a tour of Italy from Turin in the North to Bari in the South....best *check with the other half first, ed!*

Incredibly, the last two surviving Derby built LMS English Electric 0-6-0 diesel shunters built in 1939-42 are both in Italy. One remains in revenue earning service and the other is languishing in a museum workshop yard suffering from flood damage. There is a Cl.03 looking resplendent as a gate guard at a distribution warehouse (ironically with no rail connection) and the Cl.04 having been replaced as the yard shunter at a sugar distribution warehouse is now safely in Derbyshire.

LMS 7103: (formerly WD70052 and now 700.001) belongs to the Piedmont Museum in Turin. After a 45 minute suburban ride and a ten minute walk I turned up at the museum in the suburb of Savigliano full of excitement and anticipation, but soon identified that there was no LMS shunter. Thankfully, one of the team there was able to explain that the shunter was not on display but kept in the workshop facility at the former station. Only a stone's throw from my hotel and Turin Central station where I had started my journey! So back I trundled, mumbling a few choice words under my breath.



As it happens, once back in the centre of Turin, the workshop is easy to find, although to use a classic British understatement, it has to be said it is not in the most salubrious part of town. The suburb is called Aurora and the address is 15 Corsa Giulio Cesare, postcode 10152. The shunter is stored outside, by the main workshop building, so once inside the facility it is easy to see, touch and walk

around, but not so easy to photograph. The nearby river flooded badly a few years ago and it is clear to see the external damage this has caused, eg the wooden cab doors. The loco looked particularly neglected and the impression was clearly given that it was not on the museum's priority list.

LMS 7106: (formerly WD70055 and now 700.003) is normally stabled at Arezzo-Pesciola depot, a small and fascinating depot with adjacent station which is just one stop from the main Arezzo station. Arezzo is a beautiful part of the country to the south east of Florence and I would recommend the train journey from Florence to Arezzo as an excellent day trip. Once at Arezzo, it is a short walk of less than

a mile (or a one stop commute) to the depot where the shunter is maintained and rests between tasks. There are plenty of old Italian locomotives to see as well. Although this is a functioning depot, the staff were extremely friendly to me and were more than happy to take me to the shunter and even let me cab it. The paintwork was immaculate and the engine sounded in fine tune.

03156: The number was identified from my photographs by Peter Hall as the locomotive does not carry any number or worksplate. Bizarrely, it has pride of place on a plinth at the entrance to the Ferramento Pugliese distribution warehouse with absolutely no connection to

rail at all. The entrance to the facility is on a dual carriageway outside the town of Terlizzi, near the coastal town of Bari, deep in the south east of the country, so a bit of a long way from civilisation, but well situated for beautiful coastline and rugged countryside. Basically you follow Strada Provinciale 231 (SP231) until just west of the intersection with SP108 and then use your eyes, looking south. The locomotive can be seen without going into the facility, but I managed to persuade the security guard to let me in to take my pictures. He was incredulous that someone would travel so far just to see a train, but I guess we have all had conversations like that before, haven't we!



I hope the information above has been of interest. Certainly, there is much fun to be had from a trip around Italy but each one could be part of a localised holiday to a well recognised tourist destination...*helps with the argument, ed.* Here is a summary table to help you load up your SatNav.

Loco	Location	Address
7102	Piedmont Museum Workshop	15 Corsa Giulio Cesare, Turin 10152
7106	Arezzo-Pesciola depot	Via Concino Concini, Arezzo 52100
03156	Ferramento Pugliese distribution centre	Strade Provinciale 231, near Terlizzi 70038



D2289: For completeness I have included D2289 which was recently been repatriated to the UK on the 13th June 2018 and is now based at Heritage Shunters Trust (HST), Rowsley South, Peak Rail (PEA). As it has disappeared inside the shed it might be a while before most get a decent photo.

Until 2016 D2289 worked as the yard shunter for the Lonato sugar warehouse and distribution centre located in the industrial site by the roundabout at the western end of Via Montebello, Lonato 25017. It was replaced by a sparkly new machine but rested on track in the open at the back of the facility. The site manager kindly escorted me round to see the shunter and allowed me to cab

it, but there was definitely a look of disbelief on his face when I first asked! The company was more than happy to sell the locomotive so saving it from being scrapped.

DAYS OUT

Booths, Rotherham by Paul Sumpter:

Myself and a friend decided to head for Booths scrapyard on Saturday 25th August 2018 in order to see 56128 and 01565, the latter the main reason. This is the journey by public transport, Reading to Paddington, King's Cross to Doncaster, Doncaster to Sheffield, two Sheffield trams to Meadowhall. Now that was the simple part. To get to Meadowhall we needed transport to Booths. So we called a taxi firm as none was waiting and explained where we needed a taxi to and for the driver to take us there, wait a few minutes then take us back. Taxi duly arrives and he asks us to explain in more detail as he was worried we were up to no good! So we explain we are train spotters who are keen to see a particular loco and to drive down this back alley then to wait whilst we then jump out run a few yards down to the metal gate before he then returns back, easy. He agrees and we have some light hearted banter during the journey. We get there 10 mins later, jump out and run to the gate peeking through the gap to see 56128 but no sign of 01565. Not happy at this point as this was the main reason for going. My mate then drops to the floor flat on his belly and peers under the gate. And there in the distance is 01565. I therefore copy him, so we are both lying there and a cop is made. We then ran back to the taxi, where we find the driver rather amused at our antics. After returning to the tram we offer the driver a tip for waiting but he declines as he reckoned it was the best fare he has had in ages. We are both 54 and have been spotting since we were 11, some people never grow up...*you can say that again, but we are harmless, ed.*



unidentified SPA wagon, 56128, 01565 & D78 Stock 17534 (Paul Sumpter)

STOCK MOVES

With so many new stock moves occurring, particularly with various barrier wagons and transfers of stock between operators or into store, I thought it best to start showing these all together as this will become a regular sight over the next few years.



above one move with a difference, with temporary TOPS number 66999, for movement within the UK, SNCB 6601 is seen being hauled by 37611 from Hull Docks – EDL, Stoke-on-Trent for maintenance, Stockport (16.00) 20th August 2018 (Harold Hull)



left 43150 + 43164 returning from dropping off coaches to Ely Papworth Sidings, North Fen (08.41) 8th August 2018 (Toby Radiszewski)

below the regular 'S' stock move from Banbury to Derby Works has not featured lately so here prior to the blockade restricting such movements for a while is 20311 + 20314 + KBA 85936 + S Stock 21556 + KBA 85933 + 20107 + 20901 Derby (15.30) 16th June 2018 (Derek Everson)



RAILWAYS & MUSEUMS

*This is an occasional series aimed at featuring those museums around the UK that contain railway traction / rolling stock. Whilst there are several railway based museums and many preserved sites with collections housed in museums there are a myriad of various industrial, transport and country life museums that have the odd railway item, some of which are featured in the **UK Combine**. If you come across an obscure museum please let me know or better still write an article accompanied by photos.*

Black Country Living Museum (BCLM) Dudley, West Midlands:

The BCLM is one of the three main open air industrial museums in the UK alongside Beamish and Ironbridge. With staff dressed in period clothing, working demonstrations give a representation of Black Country daily life portrayed across various industries. The idea to create a museum was first mooted in the 1950s and in 1966 Dudley Metropolitan BC set up a Black Country Museum section to house the growing collection of artefacts but with the size of the collection growing an open air museum was proposed to also save the larger buildings etc that would be lost otherwise. In 1976 the operation to clear a derelict 26 acre site north of Dudley Castle and Zoological Gardens was begun and a preview season was held in 1978. In 1980 a tramway was installed to help transport visitors from the entrance at the top of the site (south end) to the canal basin at the bottom (north end). Various industries and typical street scenes have been recreated with around 50 original or replica buildings. As an aside the last time I visited the area, way before the BCLM was created, was on a school trip to Dudley Zoo in probably 1961 from my infant school in Bordesley Green, one of my earliest childhood memories.

The sloping site is split into two halves with the entrance and facilities at the more open southern end. Here there is a garage housing a display of locally made cars, vans and motorbikes, a bus and trolley bus depot, colliery, a vintage fairground and the Newcomen Engine, a replica of the first successful steam engine for pumping water from coal mines on Lord Dudley's estates built in 1712. It is currently non operational as it needs a new boiler after working 31 years since its construction in 1986. The tram network also starts from the entrance which ends at the tram depot adjacent a row of shops etc. From here the site drops to the 1930s Old Birmingham Road relocated in 2010 and the 'J' shaped canal basin, an original feature from the site which leads off the Dudley Canal and main canal system forming a 'U' shape, within which lies the canal side village, rolling mill and boatyard. The lime kilns dominate the western end of the basin. The separate Dudley Canal Trust is based at the northern end of the site with road access from the A4123, operating boat trips on the Dudley Canal into Dudley Tunnel which they saved from closure. The short Dudley Canal leads westwards into the Birmingham Canal. Unfortunately for us on the day of our visit on the 20th July 2018 both the trolleybus and tramway systems were out of action with repairs to the electrics, so we missed three major exhibits. We did at least ride on one of the two buses operating around the southern section of the site, single deck West Bromwich Guy GS MXX 340 fleet no.252, originally delivered to London Transport in 1953 as GS40. The other bus was double deck Midland Red BMMO D9 6342 HA fleet no.5342.



above BMMO 6342 HA at the Tram Depot with tram 5 just visible
the 1930s Old Birmingham Road is to the left behind the garage with the canal basin lower down
beyond the trees above the car

There are 6 trams based at the BCLM, none are complete originals with all on replacement underframes or none at all. Only 3 are operational, single deck 5 & 34 with open top double deck 49 all of which were in the tram depot along with the grounded lower deck of 36, a former open top double decker. A further tram was sheeted outside.



Apart from narrow gauge mine wagons, there is only one real railway exhibit which is a static exhibit outside the entrance so can be seen from the car park. Manning Wardle 0-6-0ST [2025] built in 1923 at the Boyne Engine Works, Leeds. Ordered for Cadbury Brothers in Bournville it worked at the Blackpole factory in Worcestershire. The 0-6-0 wheel arrangement was too large for the Bournville site tight track curves so only worked there briefly. Replaced by diesel traction in 1946 it was sold to Robert Stephenson & Hawthorn who overhauled it for use around the Pensnett Trading Estate, at the time the largest such enclosed estate in the Europe. Operated by G Pitt & Co, later Lunt, Comley & Pitt Ltd it moved coal and coke. It is named 'WINSTON CHURCHILL' though when this was bestowed is unclear. The only other railway item is a grounded ventilated van body at the mine.

Considering this is a museum about Black Country industrial life, it is strange that railways feature very little. I said this about the railway exhibits at the Thinktank (see article in the Sep 2016 issue p45) in that Birmingham at the heart of the railway system and home to several works has no major museum featuring railways but focuses more canals, their predecessor. In fact a former railway, which I believe it is now a footpath, passes the western boundary of the site though no mention is made it exists and only discovered its presence in research afterwards. It was the Oxford, Worcester & Wolverhampton line opened in 1853, closed in 1962, which branched off from the South Staffordshire line just to the south the BCLM site to the east of the castle. The remains of this line pass north-eastwards under the A4037 heading to Bescot.

Dudley is to the west of Birmingham. Access by road is on the western side of the A4037 Tipton Road, 150 yards south of the A4123 (traffic lights) or 300 yards north of the A459 / A461 (roundabout). The A4123 leads to Jct 2 on the M5 about 3 miles to the southeast or via the A463 to Jct 10 on the M6 4½ miles to the northeast. Tipton station is 1 mile away via Owen Street, High Street then Dudley Road which becomes the A4037. For more info visit <https://www.bclm.co.uk>

Fascinating exhibits but not a lot of railway interest, however another site ticked off. The next article in this series will be on the group of museums at Ironbridge where the railways play a bigger part.

PHOTO SPOT: NR TEST TRAINS



above 37025 t&t DBSO 9703 Peterborough (12.32) 15th July 2018 (Toby Radziszewski)



above 37254 t&t 37099 Bannold Road (16.48) 22nd June 2018 (Toby Radziszewski)
below 37099 t&t 37254 Waterbeach (19.13) 16th July 2018 (Toby Radziszewski)
note the pantograph is up on leading test coach 975091 'Mentor'





above 67027 t&t 67023 with 9481,
977997, 72631, 975091 on
1Q67 Leeds - Wigan test train was
seen in Platform 2 at Rochdale,
routed from Neville Hill via Normanton
and then to Calder Valley it reverses
at Rochdale then takes Copy Pit route
to Wigan (17.13)
26th July 2018 (Harold Hull)



right

37116 t&t 37099 Brundall (16.49)
16th August 2018 (Stuart Moore)

below 37612 t&t 37421 on 1Q53
Eastleigh Works to Eastleigh Works,
Eastleigh (17.08) 28th August 2018
(Chris Addoo)



INFRASTRUCTURE NEWS

Aberdeen – Dyce Track Doubling by Trevor Roots:

The line opened again from the 20th August 2018 though work still needs to be done to fully commission the new sections of track, as can be seen in the photos taken on the 13th and 25th August 2018. The Waterloo branch junction at Kittybrewster has been remodelled and this can now be used again by freights as seen with 66023 and its consist of TEAs. With the new track yet to be tamped, 66023 still had to reverse back onto the original single track under St Machar Drive before proceeding south through Aberdeen via the manually controlled points (see photo in Jul / Aug issue. The connection of the new second track to the headshunt has still yet to be completed (see opposite top.



above left looking northeast from the A947 Stonewood Road towards Dyce
above right looking southeast from Quakers Bridge, Old Meldrum Road, both 13th August 2018



looking west from Don Street
with track in place and showing
a new fence on the top of the
embankment, 13th August 2018



above looking south from St Machar Drive, Kittybrewster with again little changed except the embankment on the left has been regarded and an area prepared at the base to take the realigned loop with the grass covered trackwork yet to be re-modelled including relaying / re-ballasting of the second through track, formerly the loop which led to the headshunt, to allow another headshunt to be provided as unlike in the following two photos only 3 tracks are visible, 25th August 2018, note another 4 TEA tanks + 66023 are around the curve to give you a sense of how this and the following photos fit with the unfinished track is just around curve between the running line and the 'last' TEA

below looking north from A96 Powis Terrace, Kittybrewster with the new second running line and lower part of the loop yet to be tamped, note the catch point

66023 is sitting in the re-modelled Waterloo branch loop with 158718 on an Inverurie to Aberdeen service (18.18) 25th August 2018



below a closer view of the four tracks with the second running line (second from the left) yet to be finished and the new loop line (third track) petering out alongside the 7th TEA at the stick just visible on the left which appears it will be slewed over beyond the curve to the loop on which 66023 is sitting and then another track laid to a new headshunt finished as you can see the track, 25th August 2018



left looking north from St Machar Drive, Kittybrewster with the new second track yet to be connected to Kittybrewster Jct headshunt, 13th August 2018

Misc News:

In the photo right taken by Spencer Conquest on the 18th August 2018, the sidings alongside Barrow Hill Roundhouse are now nice and level having been tamped by the look of things since the photo in the Jul / Aug issue. Two sets of steps have also been erected to enable access to and from EMT units.



With the platforms now being rebuilt the view below by Iain Gardiner shows Breich Station on the 11th August 2018



GRUMPY GRICER CORNER

No wonder our country is in a mess when it comes to infrastructure projects or simply just building anything. We have the case of electrification forging ahead as promoted by government but then literally hitting a brick wall when trying to get past local planning objections. Having worked in local government at Borough and County level in Planning and Transport for 23 years I know both sides and the frustration that Network Rail are experiencing simply trying to get a single bridge replaced on the GWML. Steventon Bridge is too low for safe high speed passage but is grade II listed but you would think NR were knocking down a palace. It is nothing special but Vale of White Horse Council have taken 4 years constantly referring and finally rejecting sensible plans for its replacement. Without it IETs will now have to have a speed restriction or switch between electric and diesel but at a slower acceleration in doing so than the HSTs they replace. Other electric units like CI.387s do not even have the choice to switch power modes so will have to slow down when eventually used on this section. This will have knock effects for timetabling and potentially increasing capacity but one local council is prepared to the dogma of conserving a bridge against the wider area wide economic benefits. In the end the bridge was built for a purpose and an era when the height above the track was not an issue, when the purpose changes so needs the design. It's an irony that important locos, often unique examples have failed to secure official support for saving from being scrapped. An appeal will probably win but could take another 18 months to resolve. Where is the pragmatic strategic overview. How many in the know, let alone the public realise these planning battles go on all the time and don't mention the wasted time, effort and money. What has always got me is the Victorians in most part saw nothing wrong in wholesale demolition or gouging through pristine countryside to create our railways. They then remodelled city centres to cater for new methods of operation but we created a blunt Conservation Act in a knee jerk way in 1969 which then thwarts even sensible minor progress, they would turn in their graves... well twice as they must do that over the unkempt state of railway infrastructure anyway. Rant over !!

NARROW GAUGE MATTERS

Bala Lake Railway (BLR) by Martin Evans:

On 16th June 2018 I visited the first day of the three day Penrhyn Quarry Steam Gala at the Bala Lake Railway. Three visiting engines were in traffic [2067] 'MARCHLYN', [316] (Statfold Barn Railway) 'GWYNEDD' (Bressingham Steam Museum & Gardens) & [855] 'HUGH NAPIER' (Ffestiniog Railway) along with resident locos: [780] 'ALICE', [680] 'GEORGE B', [779] 'HOLY WAR' & [364] 'WINIFRED' sister locomotive to 'GWYNEDD'



left
[855] 'HUGH
NAPIER' + [779]
'HOLY WAR'
waiting to
proceed into
Llangower with
the 11.40 service
from Bala, BLR
16th June 2018
(Martin Evans)

TEST VEHICLE PROFILE



With the ability to go anywhere in the UK purpose built track recording DMU 950001 built in 1987, using the same design as a standard CI.150 is used to test track geometry. These views show the differences between the two cars, initially the cab fronts were plain and devoid of lights and camera and even these fittings have changed in recent years, *right* compare with front of 999601 at Derby Etches Park on 13th Sep 2014. Initial livery was blue & grey with a mid height red stripe then Railtrack lime green & blue (does anyone have photos ?) then NR yellow with additional branding added in recent years



below 999601 with camera attached to front, Derby RTC - Bletchley, Wellingborough (11.04) 28th August 2018 (Colin Pottle)



OUT & ABOUT

by James Holloway

*For clarity, steam locos are now shown in red. To be more helpful for those interested in where stock was exactly, can I ask all contributors who list trip sightings over long distances, to please add all locations when submitting to James. Please also ensure your sightings reach James a few days before the press deadline, see **SOCIETY NOTICE BOARD**...ed*

Barry Hayward:

7th August: B'ham New St 08.00-09.20: 43207/85
43321/66, 158821/28/29, 170101/04/05/14/17, 170398
170504/07/13-15/20, 170632/37/38, 220010/11, 221110
221113/24/26/28/33/37/39, 323202/03/06/07/09/11-15/17
323219/20/40/41/43, 350103/06/11/15/20/26, 350249/67
350374, 390042, 390119/21/27/55/56
Stockport 10.45: 150115/27, 158847, 390151
Manchester Piccadilly 11.00-12.30/17.00-19.15: 66714
142005/07/11-13/17/18/26/31/41/43/45/60/62/89/93
150102/11/12/15-17/19/27/29/30/33/35/43/44/48/50
150205/06/10/18/20/71, 156423/24/28/38/41/55/60/61/87
156489, 158773/88/99, 158806/08/12/47/57/58/89
175001/05/06, 175104/14, 185108/18/22/30/33/34/37/39
185145/49, 220001/10/11/19/27/33, 221122/26/34
319361-64/66/69/72/75/7-79/82/84, 319442/46/58
323220/23/24/26/28/31/32/34/35/38, 350402/07-09
390040/42/44/45/49, 390130/52/54/55
Manchester Victoria 13.30-16.00: 66152, 66770, 142003
142004/11/13/14/17/27/30/32/33/37/40/41/49/50/54/62/82
150114/17/34/36/41/42/49, 150209/10/18/23-25/68/74-77
153316/32/80, 156421/27/28/48/84, 158575/59, 158861
185113-15/17/20/25/31/33/35/43/44/47/48

Nigel Hoskins:

16th August: Northfield 12.29:
66425 4V44 Daventry-Wentloog
Landor St Jct: 66768 6M35 Gloucester-Clitheroe
Leicester : 14.27 66117 6X01 Scunthorpe-Eastleigh
14.31 66729 6F93 Churchyard Sidings-Kelton
14.55 66192 4D31 Elstow-Humberstone Road
15.04 66751 6M34 Ferme Park-Bardon Hill Quarry
Humberstone Rd Jct 15.32:
66727 4M29 Felixstowe-Birch Coppice
Sibley Jct:
16.22 66750 6M56 Boston Docks-Bardon Hill Quarry
17.06 66741 6M26 Eastleigh-Mountsorrel
17.13 66706 6L27 Mountsorrel-Whitemoor
17.39 66413 6V08 Tunstead-Brentford
17.43 50008 6X25 Doncaster-Leicester
18.13 156419 5Z19 Burton-Norwich
18.45 66726 6L15 Toton-Whitemoor
19.05 66091 4Z58 Brandon-Peak Forest
19.10 66603 6M91 Theale-Earles Sidings
Knighton Jct 19.51: 66107 6D28 Elstow-Mountsorrel
Nuneaton: 66061 6M88 Middleton Towers-Ince & Elton
Coventry Arena: 66528 4M98 Southampton-Garston
17th August: Millmeec:
66553 4O49 Basford Hall-Southampton

Crewe: 66429 4Z48 Crewe-Daventry
90047/49 4M27 Coatbridge-Daventry
Acton Bridge: 10.21 68032 0K23 Wavertree Jct-Crewe
10.43 66524 4V22 Fiddlers Ferry-East Usk
10.51 66562 4M45 Felixstowe-Garston
11.27 68032 0F24 Crewe- Wavertree Jct
11.43 66607 6J34 Folly Lane-Brintle Heath
11.56 66136 6M13 Dollands Moor-Ditton
12.04 66517 6F33 Bredbury-Folly Lane
12.16 90019/20 4M25 Mossend-Daventry
12.29 66951 4K64 Garston-Basford Hall
12.31 66613 6F70 Tunstead-Garston
12.43 66768 6V35 Clitheroe-Avonmouth
13.18 DR73921 6J11 Rugby-Penrith
13.28 66428 6C28 Mountsorrel-Carlisle
13.41 66517 6H35 Folly Lane-Northenden
13.48 66015 6K32 Arpley sidings-Stoke-on-Trent
14.11 66063 0Z23 Crewe-Warrington Arpley
14.27 90041/44 4S44 Daventry-Mossend
14.43 66562 4L92 Ditton-Felixstowe
15.15 66619 6H51 Hareland-Tunstead
Hartford: 66570 4M63 Felixstowe-Ditton
Stafford: 16.42 66542 4M58 Southampton-Garston
17.09 70003 4M61 Southampton-Trafford Park
17.13 66762 6K50 Toton-Basford Hall
17.28 66567 4M88 Felixstowe-Trafford Park
17.28 66563 4O29 Trafford Park-Southampton
17.44 66162 6M48 Southampton-Halewood
17.48 86628/13 4M87 Felixstowe-Trafford Park
18.06 66711 6L48 Garston-Dagenham Dock
18.54 66523 4L86 Trafford Park-Felixstowe
19.12 66592 6X54 Basford Hall-Wembley Central
18th August: Leicester:
10.12 66413 4L90 Lawley St-Felixstowe
10.29 66727 4L29 Birch Coppice-Felixstowe
Melton Mowbray: 12.10 66502 4L93 Crewe-Felixstowe
13.42 66086 6M88 Middleton Towers-Arpley
13.50 66107 6E67 Mountsorrel-Peterborough
14.51 66598 4M20 Felixstowe-Basford Hall
15.01 66742 4M23 Felixstowe-Hams Hall
15.22 66758 4L29 Hams Hall-Parkstone
Leicester: 16.12 66733 4E21 Trafford Park-Hexthorpe Yd
System: 16.35 66030 6D31 Radlett-Mountsorrel
16.45 66733 4E21 Trafford Park-Hexthorpe Yard
17.52 66185 6M88 Middleton Towers-Arpley
18.14 66619 6M92 West Thurock-Tunstead
19th August: Coventry:
09.14 66605 6Y60 High Oaks Jct-Basford Hall
Leamington Spa: 09.37 6P01 Banbury-Basford Hall

Paul Tisserant:

9th August: Exeter St David's & Depot 12.56-15.50:
 43004/17/22/23/29/42/56/63/69-71/92/93, 43137/71/76/85
 43191, 43207/85, 43304/21/66/78, 143603/11/17-19/21
 150002, 150207/21/32/38/47, 153325/29/33/61/69, 158884
 159007/08/16/19/20, 220005/08/22/24, 802002, 802101

Geoff Hope:

10th July: St Pancras 11.55-12.25/19.45: 373213/14
 374009-14/19/20, 700017/31/47/53, 700101/15/18
Blackfriars: 700002/05/07/11/12/17/21/22/24/25/27/31/32
 700037/43-45/47-49/53/54/56/58, 700108/13-16/18/23/25/26
 700128/30/31/34/38-40/43/46/52/55

Paddington 15.45-19.15: 43004/15/17/22/24/25/28/40/56
 43086/92-94/98, 43122/29-31/36/38/47/51/55/59/60/64/72
 43174/82/86, 165117/21/30, 166217, 332001-04/06/07/10
 332011-12, 345015/17, 360201-03, 387130-41/43-60/62-65
 387167/68/70-74, 800006-10/12/16/19/20/23/26/27/31/35
 800036, 800306

1st August: St Pancras 11.55-19.35: 373205/06/21/22
 374013/14/19/20/25/26, 700004/08/52, 700147/49/54
Blackfriars 14.50-16.00: 700005/07/11/12/27/41/44/50/56
 700058/59, 700102/05/07/16-18/22/30/32-35/39/41/45/46
 700151

London Bridge 16.05-19.00: 375301/05/07/10, 375601
 375602/04/08/10/11/14-16/18/19/21/22/24/26-28/30
 375703/06/11/14, 375801/02/04-07/09/11-14/17-21/27/29
 375830, 375901/03/05/08-13/15-18/20-27, 376001-04
 376006-11/13-32/34/36, 377520/21, 465003/05/06/08/09
 465011/13-18/20/22-31/34-48, 465151-53/56/59-63/67-70
 465173-78/81/82/84-86/89/90/92/93/95/96, 465235/38/39
 465241/44/48/49, 465901-04/06-09/11-15/18/19/21-26/28
 465930/31/34, 466003/04/07/09/12/13/16/17/20/23/26/27
 466029/31/32/35-38/40-43, 700013/25/39/41/47/49/56/59
 700101-03/06/07/09/11-14/16-20/22/23/25-30/32-46/48-51
 700154/55

8th August: Willesden: 378202, 710261/66
Paddington 12.10-14.05: 43009/23/53/69/94/98, 43122
 43129/31/36/51/55/60/61/65/72/90/97, 165107/27, 166221
 332002/08/10/12/13, 345015/17, 360201/03/04, 387132
 387140/42-44/48/53/55/56/60/64/70/73/74, 800005-08/10
 800013/15/16/19/22/26/28/33, 800306/07

Marylebone 14.15-15.45: 68011/14, 165003/05/08/10/13
 165015/17/19/21-23/25/31/33/34/37/38, 168003, 168107
 168108/11/13, 168216/19, 168321/22/27, 172103
 DVTs 82301/03, cs 10272/73, 12602-04/13/15/17/18/20
 12621/23

Blackfriars 16.15-17.05: 465020/40, 465933, 700004/06
 700010/14/22-25/30/34/38/43/44/49/50/57-59, 700101/09
 700111/14/17/20/33/40/41/43/44

London Bridge 17.10-19.00: 375301/03/06-08, 375601
 375602/04/05/10/11/16/22/26/28/29, 375713, 375801/03
 375805/08/11/13/18/20/21/24/25/28/30, 375901-07/10/11
 375913-17/19-27, 376001-14/17-20/23-36, 465001/03/04
 465007-09/11/13-15/18/19/21/22/24/26/27/30/32/34/36/38
 465039/46/48/49, 465153-58/60/62-64/66-68/70-73/76-78
 465182-86/88/91-95, 465236/38/40/41/44-46/48-50
 465903-09/11/13-15/17-19/21-29/32, 466002/05/07-09

466012-14/19-24/28/30/32/34-36/39-43, 700002/21/26/40
 700052, 700103-05/07/08/15-17/19/21/23/26/28/29/31/34
 700135/36/42-44/46-48/51-55
St Pancras 19.25: 374031/32
Crewe 21.30: 68026/27, 150227, 158819/32

Danny Coyne:

13th June: Midland Rd Leeds 06.55-07.32: 66419, 66504
 66505/09/42/55/61, 66606/16, 66956, 70001/02/04/09/11
 70013/16/18, 142042

Freightliner Depot: 66511, 66951, 70003, 158909
Knottingley 08.00-08.55: 66054, 142019
Doncaster: 20007, 20205, 43043/61/64/75, 43206/08/38
 43239/51/72/74/77/90/95/99, 43302/06/07/12-14/16/18-20
 43363/67, 50035, 55019, 56078, 56302, 66054/65, 66138
 66161/85, 66200, 66422, 66519/23/51/63/64/66/92/94
 66711/15/28/41/53/60/62/63/65/67/68/79/84/89, 88001/06
 90019, 91101-03/05-08/10/11/13/15-17/20-22/24/25/27-32
 142032, 153311/83, 180101/04/08/09/13/14, 185141/48
 800103, DVTs 82201/04/06/09-14/16/17/19/20/22-30

24th July: Warrington 09.10-09.35:
 60059, 66061/09/21/50/186
Acton Bridge 10.00-12.25: 66002, 66137, 66523/53/58
 66602, 86613/37, 90028/40-42, 323227, 350108/19/24/28
 350242/57/65, 350374, 390010/44/45/47, 390112/14/53
Crewe Station 13.15-14.40: 57309, 66092, 66548, 90018
 153319/79, 150255/59, 175102/09, 221114/15/43, 319383
 319450, 350108/19/20/28, 350242/55/57, 350370
 390009-11/20/47/50, 39019/21/38/48

Gresty Bridge 14.50:
 20302/03, 37069, 37218, 57301, 68005/27/31
Casey Lane 15.00-18.30: 66149, 66425, 66516/20/33/58
 66572, 66706/11/24/66/77, 67029, 68001/33, 70002/15
 86607/14, 220020, 221108/09/11/12/15/16/18, 345044
 350108/24/28, 350242/55/57/66, 350374, 390001/20/45
 390047, 390112/15/17/18/22/23/26/29/36/38/41/53/54
 31st July: Leyland 09.10-09.20: 156466/68, 319458

Preston 09.30-09.44/19.08-19.48: 142026/41/54, 150127
 150135, 156486, 158717/55, 185122, 319363/79/85
 319458, 350401/07, 390005/20

Carlisle 10.50-15.10/17.25-17.55: 37069, 37175, 37218
 37401, 37669, 57307, 60021, 66423/24, 90046/49
 142092, 156360/70, 156425/37/43/44/48/53/59/64/81/87
 156499, 155509, 158851, 158901, 221102, 350401-06/08
 350410, 390006/09/11/13/20/25/43, 390103/12/24/28/34
 390136/37/51, 48151

Kingmoor 15.43-16.40:
 37403, 57305, 66303/05, 66432, 88010
7th August: Warrington 09.10-09.45: 60059, 66061/86
Acton Bridge 10.15-12.30: 66100/62, 66420, 66512/15
 66537, 66953, 68031, 90020/40, 221106, 350115/25/30
 350240/48/58/65, 390002/43, 390112

Crewe Station 13.20-14.25: 08631, 57304, 67022/29
 90043/47, 150229, 153311/62/79, 175103/13, 221113/16
 221142, 319375, 350125/30, 350234/58/65, 350368
 390009/50, 350124/27/34/51/53/55

Gresty Bridge 14.35-14.45:
 20302/03, 37259, 57301/03, 68004/21

Basford Hall 14.47-15.00:

66523, 86229, 86613/22, 90046

Casey Lane 15.07-18.30: 66502/37/53/57, 66711/14/6666768/89, 68002/34, 70005, 86627/38, 158825/34
220019, 221101/03/04/11/15-17, 325003, 345047, 350111
350115/25, 350234/48/56/65, 390002/05/06/10/20/39/40
390045/50, 390103/19/21/26/27/30/31/37-39/51/55/55/57
DR73113**Steve Lord:****17th August: York 13.40:** 90029 t&t 67015

cs 9526+3345+3356+3304+1691+3364+3386+17105

Alan Jones:**7th July: Elgin 20.00:** 37116, 37421, 158718, 170404

cs 9481/72631/975091/977997

11th July: Inverness: 45157 (45407), 62005, 08523, 4312766302, 67016, 73967, 158720, 170425/57, cs 1220/1840
3093/4951/4960/5239/5253/5278/5419/6528/6701/9391
9497/9801/10502/10513/10522/10529/10544/10562/10617
10675/10718/21266/80220/94225/99326/99329**Forres 16.15:** 158725/30**Elgin 17.00:** 66416, 66509

66509 (16.22)

14th July: Elgin 19.45: 66503/32**18th July: Elgin 17.00:** 66522/59**20th July: Elgin 20.00:** 170433/54**21st July: Elgin 21.45:** 60002, 70809, 158741, 170457**1st August: Inverness 13.00:**

158702/12/23/25, 170416/29

5th August: Elgin 20.10: 37421, 37612, 158703**11th August: Kingmoor 11.00:**

37218, 37403, 66303/04, 66426/28, 68001, 88006

Carnforth: 45699 GALATEA, 47767, 66305, 66432, 86259

144015, 156420/82, 158793, 158842, 390114

19th August: Inverness 16.15: 08523, 43021, 67015

158703/06-08/15, 170409/57, cs 1691, 3304/45/56/64/86

9526, 17105

Ian Bain:**20th July: Nuneaton 12.45-15.15:**

66059, 66517/37/65/91, 66708/65, 66951, 90028/40/45/49

21st July: Midland Road, Leeds 14.00:

66542/52/64/96, 66603/07, 70001/04/09/11/13/16/18/19

Tyne Yard: 66526**Sean Davies:****10th July: Worcester: 66076,** 165102/29**11th July: Worcester: 66953,** 165103**15th July: Liverpool Central:**

507001-03/05/08-10/14/18/21/24-26/30-33, 508104/08/12

508114/22/24/26-28/30/31/36/38/39

Southport:

142019, 150130/40/45, 156424/82, 507007/16, 508115/43

16th July: Manor Road: 507004/08/09, 508104/34**Hamilton Square:**

507006/19/28/31, 508104/10/20/27/30/34/39/41

Port Sunlight: 508120/39/40**Hooton:** 507003, 508110**Birkenhead North:** 508130/34**17th July: Worcester:** 70803/04**21st July: Kidderminster:** 168113**Stourbridge Jct:** 68011/15**B'ham Snow Hill:** 172212, 172334/43**Tosley:** 168214, 170639, 172213, 172341**Solihull:** 165006, 172331**Banbury:** 165011/17, 168002, 220032**Princes Risborough:** D3018**Wembley Depot:** 68012/13**Marylebone:** 68008, 168106**Waterloo:** 158885, 159006/18, 159101, 444013/17/38

450005/18/32/37/92, 450115, 450548/60/62, 455701/13

455714/15/28/30/36/42, 455859, 455905, 707002/06/08

707011/12/16

Vauxhall: 444002, 707006/11**Clapham Jct:** 159004, 377104/17/24/32/36/46/61/82

377202/03/06/09/10/12/14, 377320, 377406/09/27/39/43

377449/51/64, 377601-04/08, 377611/12, 377701

378144/46, 378203/06/10/19/32, 387205/06/08/12/17/26

444016, 450005/17/32/38/40/80/94/95, 450105/07/09/15

450120, 450544/48/52/58/60/61/64, 455703/10/12/19/22

455728/30/33/39, 455801/16/23/31/46/51-53/61-63/67/70

455873, 455901/02/07/11, 456001/03/13/20, 458153/14/24

458536, 707003/04/06/14/21/25-27

Wimbledon Depot: 455865, 458504, 707005/22/24**Raynes Park:** 159001, 444007/15/28/42/45, 450012/16

450021/41/77/78/96, 450549/50/54/61, 455701/03/05/11

455716/24, 455848/53/56/61/70/73, 455903-05/10-12

456006/16

Malden: 455862**Motspur:** 455742, 455868, 455911**Surbiton:** 158882, 159107, 444031, 450037/40, 450125

455713/20/36, 455866/74, 456012

Wandsworth Town: 707009/28**Barnes:** 458507, 707018/28**Isleworth:** 707014**Feltham:** 458515/16, 707001/03/15**Putney:** 707018**22nd July: Waterloo East:**

375609, 375701/12/13, 375804, 375916/25, 376002/25

465002/14/15/47/49, 465169/78, 465241, 465907/08

Liverpool Street: 90010, 315808/22/31/41, 317510

321355, 321402, 345005/08, 360101/12, 379005/08

Bethnal Green: 315811**Stratford:** 66422, 90001/02/09, 315828/38, 321307/30/33

321349/53/55, 321402/03/21/41/42, 345003/05/07/08

360103/08/17/21, 378206/09/13/16/17/23/30/56

Ilford Depot: 08700, 315806/21/25/28/29/35/42/44/46/51
317515, 317656, 317723, 317890, 345009/12/14/27
Ilford: 315806/34, 317515
Romford:
66502/14, 66730/49, 315802, DR73115/945, DR77905/07
Harold Wood: 315843/49
Shenfield: 321429, 345003/06-08
Wickford: 321340
Southend Victoria:
321302/04/12/15/41/46/53-55/59, 321402/21/27/39/44/45
Waterloo: 159010/16, 444015/33/39, 450073/77/88
450565, 455702/23/25/28/29/34, 455907
23rd July: Waterloo East:
375602/29, 375705, 375811, 375917, 376001/13/17/18/26
376033, 465004/10/25/30/40, 465185/86, 465912/22/25
Waterloo: 158884, 159008/11/16, 444014/16/21-23/37/45
450008/86/95/97, 450545, 455708/09/27, 455856/60
455907/10/13, 456013, 458513, 707005
Clapham Jct:
378205/18, 444006/14, 450041/42/81, 450124, 450562/70
456022, 458502/21/22, 707002/08/09/11/28
Shepherds Bush: 377206, 378219
North Pole Depot: 800012/28, 800303/06
Hampstead Heath: 378209
Gospel Oak: 172005, 378233
Harringay Green Lanes: 172004
Blackhorse Road: 172001
Barking: 172007, 357009/18/40
East Ham Depot:
357004/08/39/40/41, 357204/07/09, 357313/20/26
Upton Park: 357035
Paddington: 43015/27/34/92, 43165/88, 165102, 332002/04
332007/10/12, 345017, 360202, 387168, 800018/31/34
Old Oak Common: 332014
Acton: 59002, 59104, 66075/95, 66106
Ealing Broadway: 345016/17, 387143
Slough: 59001, 165121, 387147/50/53/60, DR79273
Taplow: 387156
Reading Depot:
57602/03, 165101, 387133-35/39/48/66/71/73
Didcot: 387149
Hinksey Yard: 66068, 70814
Oxford: 165015/16, 165103, 220027, 800304
Charlbury: 43004, 800007
26th July: Worcester: 43034/92, 47826/32, 66775
4th August: Norwich: 37038, 37409/19, 90001/03/05-08
90012, 153335, 156412/16/18, 158812/57, 170203/06/08
170270/73
Reedham: 156412
Great Yarmouth: 153335
Ipswich: 66536/52/60/87/97, 70002, 90004, 153309
156422, 170202, 321321/37-39/43/66
Trimley: 66712
Stowmarket: 66197
5th August: Norwich: 90005/06/09, 156412/16/22
158773, 158862, 170205/07
Stowmarket: DR79241-47
Ipswich: 66415, 66533/57/60/87, 86614/38, 90005

153309/14/22, 170202/72, 321332/43/50/53/66
Ely: 170207/08, 387106, DR73912/77802
Potters Distribution Centre Papworth: 43150/64
Cambridge: 317341/42, 317506/12, 317651/64/67
317882, 387108/11/29, 700033, 700128
6th August: Norwich: 37407/19, 66099, 153306, 156418
156422, 158858
Lowestoft: 153309, 170272
Saxmundham: DR73945/75408
Ipswich: 66415, 66533/51/60/65/69/87, 66727, 86604/14
86627/38, 90002/05/08/09, 153302, 170202/06/70
360110/20
Cambridge: 317346, 317650, 379009/12, 387101/02/04
387106/07/17/26, 700001/09/35/36
11th August: North Weald [EOR]: **Met, Rly 1,** 03119/70
D8001, 31438, D6729, 45132, 47754
Ongar: 205203/05
22nd August: Worcester:
43027, 43174, 66095, 150001, 800001/13

Paul Rosser:
12th July: Stockport 06.00-06.25: 142030/44/46, 150111
156489, 185126, 220019, 319367, 390005/13, 390132
Earles Sidings 06.50: 66614/21
Sheffield 07.10: 150273, 185126/35/39
Doncaster 07.35-08.15:
43169, 43310/20, 67004/12, 91103/04/16/29, 142026/70
158815, 158908, 185112, 221136, 321902, DR98008
York 08.40: 35018, 37401, 66554, 91104, 221138
Darlington 09.10: 66764, DR97504/604/804
Newcastle 09.47: 67014, 156496, 185145, 220013
Berwick-upon-Tweed 10.28: DR73116/77906
Dunbar 10.54: 70816, 380105
Edinburgh Waverley 12.15-12.52:
08472, 43208, 43308, 220008/23, 334006/17/25/31, 380114
Carlisle Kingmoor Yard 14.02:
66067, 66424, 70812, ADB965320/578/579
Carlisle DRS 14.04: 37403, 88009/10
Carlisle 14.08: 153360, 156506, 158816, DR73111/77903
Penrith 14.23: DR73922
Preston 15.15: 156427, 390135
Warrington Bank Quay 15.40: 60062, 66023
Crewe 16.00-16.12: 175107, 390127/29/35
14th August: Stockport 06.00-06.30/16.00: 66783
142012, 150137, 150215, 220013, 319458, 390010/46/49
390141
Stafford 07.20: 43062, 221122
B'ham New St 08.10-08.20: 170637, 350256
Melton Mowbray 09.39: 37601
Oakham 09.49: 66030
Peterborough 10.20-10.50: 43295, 43305, 66760, 91126
153374, 158846, 700105/26
Welwyn Garden City 11.25: 700009/10/19/36, 700118
Hornsey 11.32: 717005/07
Euston 13.40: 350242/55/66, 390049, 390154
Willesden 13.44: 710261/62/66
Wembley Yard 13.46: 56303, 66732, 66025, 70005
Crewe 15.10: 66733/68, 66847/78, 150252/58

Alan Knox:**4th July: Bentley 08.10-08.25:**

90036, 91124, 142025, 144002

Doncaster 08.30-08.42/19.55-20.26: 08669, 43189, 43208

43300, 66431/32, 66714, 67012, 88004, 91107/31, 158871

180110, 322481/85, 800201, 950001

Roberts Road: 66781**Sheffield:** 142025/26/90/91, 150277, 222012**Stockport:** 323228**Manchester Piccadilly 10.02-18.19:** 142003/05/07/14/22

142026/29/38/40/46/49/50/52-54/56/62/67/87, 150104/15

150120/27/37/38/48-50, 150204/06/11/14/15/20/22-24/28

150256/71/73/77, 156408/21/25/28/52/54/79, 158770/74

158777/80/88/99, 158810/12/19/46/54/56/57/62/89

175010/11, 175102/03/05/06/08/09/13/14, 185103/04/08

185109/12/13/15-19/21-24/27/28/30-35/37-45/47-49/51

220004-06/12/21/25/31, 221119-21/28/29/32/36/37/41

319361/62/64/65/70/79, 319424/46, 323229-39, 350401

350402-06/08/10, 390009-11/13/16/39/42/50, 390104/12/14

390118/19/22/28-30/38/48/57

10.19 70007 4M95 Southampton-Trafford Park

11.20 66740 4M21 Felixstowe-Trafford Park

13.25 66124 4L56 Trafford Park-London Gateway

14.15 66539 L/E Basford Hal-Trafford Park

14.24 66740 4L18 Trafford Park-Felixstowe

15.25 70007 4Q29 Trafford Park-Southampton

15.54 67022 1H89 Holyhead-Manchester

16.18 66537 4H81 Basford Hall-Trafford Park

16.25 66539 4L86 Trafford Park-Felixstowe

16.50 67022 1D31 Manchester-Holyhead

Dore & Tolley: 220034**Peter Cole:****26th July: Newport 08.00-11.00:**

43053, 43186, 60001, 66127, 150002, 150126, 150229

158766, 158955, 166204/06, 170113, 170520, 175002

175101, 800008/12/16/19/20/24/28/32, 800304

Cardiff 10.30-17.30: 43004, 43147, 60015, 66034, 66122

66126, 66506/26/54/63, 66760, 67010, 70815, 142002/10

142069/72/74-77/80-83/85, 143601/02/04/06/07/10/14/16

143623/25, 150213/17/27/29-31/35/37, 150241/44/45/47

150252-56/58/61-64/67/79/82/83, 153320/27/67, 158763

158820/22/39/40, 158951/53/59/61, 170112/14-17

170636, 175001/02/05-11, 175101/02/04/09/11/13/15

800009/13/15/22/24-28/30/31/36, 800305/07

Brian Bentley:**4th July: Hurst Green:** 700022, 700149**East Croydon:** 700125**Victoria:** 377516/20, 465003**Paddington 10.25-11.15/13.30-13.55:**

43009/10/35/40/41, 43129/37/51/53/54/56/60/82/91/94/96

165106/37, 332001-03/06-08/12, 345013/15, 360201/02

387132/33/37/40/49/52/66/72/73, 800007/11/13/14/16/21/22

800024/26, 800304/06/07

Marylebone 12.30-13.20:

68008, 165004/06/07/09/11/20/26/34/38/39, 168002, 168109

168111, 168216, 168327/29, DVT 82304

12th July: Hurst Green 08.35-09.16:

171201, 171401/02, 171723-25, 171801/04/06, 377109

377458/70, 700028, 700128

East Croydon: 700116/51**London Bridge 09.55-10.12/13.45-14.30:**

375601/08/09/24/28, 375901/02/07/08/15/16/24/25/27

465002/03/17-21/34/40/43-49, 465153/55/61/64/66/68/73/78

465179/83/89/90/92/93, 465236/38/42/47, 465905/13/15/24

465925/27/33, 466002-04/09/16/18/29/31/36/39/41, 700015

700052, 700107/11/31/34/38-40/44/51/54

Liverpool Street:

315812/16/42, 317339, 317509, 317662/63, 317719, 317886

317891, 321313, 321433, 379005/14/15/22/23

Hackney Downs 10.55-12.15: 315801-03/08/09-16, 317502

317503-04/06/12/14, 317652/60-63/68, 317708/10/14/19/32

317885/91, 317901-04/06/09/11/19/20/24-26/28/30

Stratford 12.25-13.15: 66562/88, 66762, 70014, 90008-10

315818/20/22/24/28/29/41/42/46/49/51/53/56/57, 317340

317669, 321312/38/51/59, 321403/30/31/33/42, 345003/09

DVT's 82102/32/33

East Croydon 14.50-15.10: 700115/42/46/53**18th July: Hurst Green 08.29-09.16:**

171402, 171721/23/28/30, 171801-03/06, 377117/44/50

377414/21/39/47/56, 700029, 700144

East Croydon: 700114/33**London Bridge 10.00-10.15/14.03-14.30:** 465001/04/08/15

465018/24/33/37/44-46, 465151/54/55/58/60/64/68, 465184

465187/89/91, 465237-40/49, 465903-06/08/12/23/28

466004/18/29/31/35, 700029/39/56, 700111/14/16-18/21/35

700038, 700148/54

Fenchurch Street 10.25-10.34:

357007, 357202/10, 357318, 387302/04/06

East Ham Depot: 357014, 357316/22/25/27/28**Barking 10.58-11.18:** 90018, 172004/07, 357007/12/21/33

357045, 357206, 357312/18/21/26

Upminster 11.28-11.54:

315817, 357010/15/24/28/32, 357206

Romford 12.03-13.18: 66517/53, 66761, 90003/06/13

315806/19/20/22/24/26/29/30/36/37/39/41-43/45/46/49/53

315854/56/59, 321315/29/35/38/39/63/65, 321421/22/25

321426/29/40/41, DVT's 82127/36/43

Ilford: 315853, 345005/06/08/12/14**East Croydon 14.45-15.10:** 700101/32/47/48**25th July: Hurst Green 08.30-09.20:**

171402, 171724/26/28/30, 171803-06, 700138

Paddington 10.40-12.46: 43010/22/24/28/40-42/86, 43131

43133/55/65/72, 165105/12, 166217, 332001/03/04/07/08

332010-12, 345013/16, 360201/02, 387130-33/46/48/49/57

387162/70/71/73, 800006-09/11/14-16/23-26/36, 800304/05

Crossrail Depot: 345033**Acton:** 59001, 66076**Ealing Broadway 12.57-13.30:** 47813, 66703, 166201

387156/61/69, 800011/17/30/31/35, 80307/09

Clapham Jct: 66715**1st August: Hurst Green 08.33-09.16:** 171401, 171723

171725, 171801-03, 377129/34/52, 377425/47/50/68

700103

East Croydon 09.40-09.51: 700102/16/23/39/46

London Bridge: 465018/40, 465931, 700130
Blackfriars: 377520/21, 700014/41
City Thameslink: 700118
Farringdon: 700058
St Pancras: 700027, 700122
King's Cross: 67014, 180114, 387108/11, 700001/33
Finsbury Park: 43061/75, 59204, 313018/28/48/53/60
 387113, 700125/38
Ferne Park: 717005/07/08
Hornsey Depot: 365502/22/36, 700109/10
Hornsey: 70806, 90018/29/39, 313018/24-26/28/32/35
 313038-40/42/44/45/47-55/57/59/60/64, 313122/34
 700009/12/15/19/51, 700102/05/14/32/34/39/45/54
Willesden Depot: 710265
Clapham Jct: 66126, 66715
Selhurst: 700046
11th August: Willesden Depot: 710261/66
Wembley Yard: 37884, 66722, 66955, 92028
Rugby: 57308

Crewe: 37421, 37612, 67002/10, 175006, DVT 82038
Warrington: 66040, 66185
Wigan NW: 142040, 319365/69/84, 319439/42
Preston: 60009 *UNION OF SOUTH AFRICA*, 66172
 142037, 156444, 158842, 158904, 319440
Lancaster: 142032, 144015, 156482, 158842
Carnforth: 66149, 66305, 66432, 88002/04, 144015/19
 156420/82, 185113



66305 + 66432 (10.39) (Trevor Roots)

Ian McAlpine:

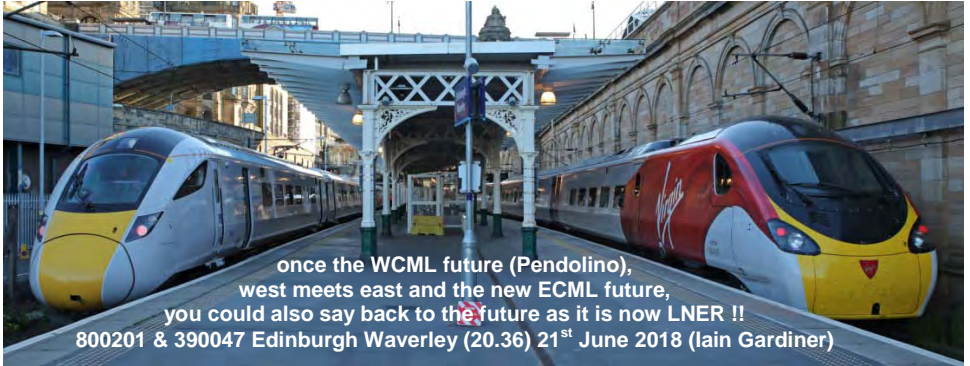
1st July: Edge Hill: 66735/76
Neville Hill: 08632, 08908
York: 37401, 66432, 91126
 DVT 82200
Doncaster: 66729/60/89
Peterborough: 66714/61/75, DR77801
6th July: Peterborough: 66706/42/61
 91110, DVT 82222, DR928001
York: 60103, 37401
8th July: Darlington:
 91101, DVT 82219
York: 33207, 37706
Doncaster:
 66729/81/83, 88004, 150270
Peterborough: 66707/14/19/61/62
13th July: Peterborough: 66083/150
 66504/772, 90036, 170272, 700111/30
 700143/48, 800201, 801102
Whittlesea: 66563/88, 66707/17/51,
 156408, 158780/99/846, 170102/03/16
 170207, 170638
14th July: Peterborough: 66550/724
 66730/76/81/86, 67002/20, 91127
 180108, 387104, 700001, DVT 82216
Doncaster: 43013/62, 66164, 66431,
 66705/06/29/38/69/77/82/88/89, 91130
 158871, DVT82205
20th July: Peterborough: 43054/58
 66192, 66714/19/57/85, 158889
Doncaster: 66431/513/516, 66701/44
Deansgate: 66529, tram 3103
Liverpool Lime Street: 507002/23/28
22nd July: Manchester Victoria:
 47832, 57314, 185115
Neville Hill: 08690
York: 91109, DVT 82227

Dennis Dey:

4th July: Hassocks: 700108/29/55
Three Bridges: 700021, 700101/05
 700108/11/14/19/25/32/40/47/49
Gatwick:
 700021, 700104/25/30/41/52/53
Clapham Jct: 707006/07/09/18/20
Queenstown Road: 707023
Vauxhall: 707017
Waterloo: 707001/05/08/13/27
Haywards Heath: 700142
6th July: Three Bridges:
 700059, 700107/11/12/34-36/43/48/51
Crawley Yard: 66724/78
Earlswood: 700050, 700117
East Croydon: 700127
Gatwick: 700111/47
11th July: Hassocks: 700127
Three Bridges: 700013/30/35/59
 700103/14/19/25/26/35/37/42-44/47
Gatwick: 700029, 700113/20/31/39
 700144/51/53
East Croydon: 700147
Paddington: 345017, 387143/44/54
 387157/62, 800009/10/12/16/18/19/25
 800028/30/33
North Pole:
 800001/08/12, 800303/06/07
Old Oak Common: 345028
Acton: 66006/37/58
West Ealing sidings: 387137/50/60/69
Southall:
 60076, 66520/51/67, 66613, 345015/17
 387130/34/38/41/45/48/49/57/64/68/70
 387171, 800012/13/17/36
13th July: Hassocks: 700119
Three Bridges: 700010/46/47, 700111
 700119/37/42/43/45/51

Crawley Yard: 66750
Gatwick: 700023, 700111/40
East Croydon: 700107/53
Wimbledon: 707010/21/23/26
Kingston: 707014/15/18/27
Burgess Hill: 700149
18th July: Burgess Hill: 700118
Three Bridges:
 700005/22/29/37, 700133/37/41/46
Gatwick: 700040,
 700106/21/36/48/53/54
East Croydon:
 700050, 700117/20/22/32/40/47
Clapham Jct: 707001/08/15/18
Vauxhall: 707003/09/23/25/26/29
Haywards Heath: 700103/14/49
21st July: Hassocks: 700125
Three Bridges: 700015/59, 700107/11
 700112/14/15/20/22/23/30/32/40/51/55
Gatwick: 700111/26
London Bridge: 700134/47
Blackfriars: 700021, 700143
Farringdon: 700027
St Pancras: 373221-24, 374001-04
 374017-20/25-30, 700125/47
Wembley Yard: 56103, 56303, 66550
 66558/71, 66763, 70005/15
Hemel Hempstead: 700002
Bletchley: 66533
Rugby: 57308, 66587
Crewe: 08868, 67013, 68025, 70005,
 150251, 158828
 175010/11, 319374, 323234, 345044
Willesden: D3671, 710261-63
City Thameslink: 700027
East Croydon: 700128/31

MAINLINE CHANGEOVER



what was all HSTs on the GWML just a short while ago is now dominated by IETs, with *above* three out of the four GWR CL.800 sub classes on show 800022, 802008 & 800304 Swindon (11.15) (Colin Pidgeon) and *below* 802101 the first of the last class to start operating, seen arriving at Exeter St. David's on a training run 5Z91 11.10 from Penzance (15.17) (Paul Tisserant) all 9th August 2018



RAILWAY OUTPOSTS: UPDATE

The Old Royal Station, Ballater, Scotland by Trevor Roots:

This was featured in the July 2015 issue which reported on the fire that nearly totally destroyed the station. The good news is that three years on it has been rebuilt and was officially opened on the 20th August 2018. It now incorporates an information centre, public library, tea room and restaurant alongside the replica carriage and Royal waiting room. The rebuild is almost identical to the original though the former platform canopy has been replaced by an enclosed addition and the carriage is now under a pitched roof as opposed to a flat roof extension. The photos below show the exterior of the station taken just before on the 12th August and just after opening on the 25th August 2018 and can be directly compared with those in the previous report both before and after the fire. The only other obvious external difference is that the colour scheme is now green & cream instead of red & cream.



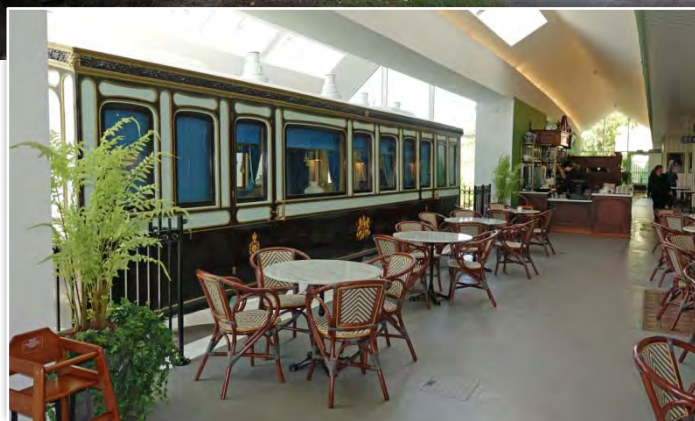
the frontage *above* 25th August & *below* 12th August



The major changes are internal in that the information centre / library occupies where the restaurant once was and a new bistro bar and seating, done out like carriage compartments occupies where the museum once was which has not been replaced, so no waxwork figures now.



the rear looking from the former platform / trackbed showing the new covered extension where the canopy once was and the pitched roof to the carriage extension, note the enclosed fenced area to the extension and additional ramp from Deeside Way to the platform not seen in 2011
above looking east 25th August 2018, *below* looking west 12th August 2018



left the carriage with tables on the former platform which has seen the paving stones removed and under floor heating installed, 25th August 2018

There are tables in front of the carriage and additional outside tables in the green fenced off area seen above. Currently there is no access to the carriage whilst ongoing repairs are undertaken but once open the tables will no doubt be repositioned as we found a continuous stream of visitors were trying to view the carriage which is inconvenient for customers at the tables. The waiting room looks superb considering virtually all the panelling and stained glass windows were destroyed. Special dining events are planned using this as a dining room with canapés served in the carriage and it is even hoped that it will be used by the Royals when staying at nearby Balmoral. Apparently Camilla casually dropped in just after the opening. The loo off the waiting room is also closed pending further work. The new tea room also looks superb.



above the former museum area with waxworks replaced by seating, note the small outside seating area beyond the glass

right the superbly restored Royal Waiting Room with dining for 10, the only surviving panel was the one in the far corner by the door to the loo (closed currently)
25th August 2018



STD GAUGE PRESERVATION NEWS

Cambrian Railway Trust, Oswestry (CRT) by Martin Evans:

On 4th August the Cambrian Railways at Oswestry were running steam at the weekend so I took the opportunity to travel from Oswestry station on the extended line to Salop Road Bridge. The loco in steam was Barclay 0-4-0ST [2216] built in 1949 (see bottom).



The photo right from the present end of the line at Salop Road bridge shows the relaying being undertaken which will lead to the Stonehouse Brewery site. This will increase the line by about half a mile and completion is expected by early 2019 if all goes to plan



Misc News:

Another new build steam loco 4-4-0 'County of Montgomery' is shortly to take off with an order to cut the mainframe frame plates. The project is based at DRC.



above with the crossing keepers hut to the right, 55012 departs Witton-le-Wear, WEA over the level crossing on the third Wednesday since resuming through running between Stanhope and Bishop Auckland West, 18th July 2018

SHUNTER SPOT



left 08296 Machen Quarry
6th April 2018 (Terry Lea)

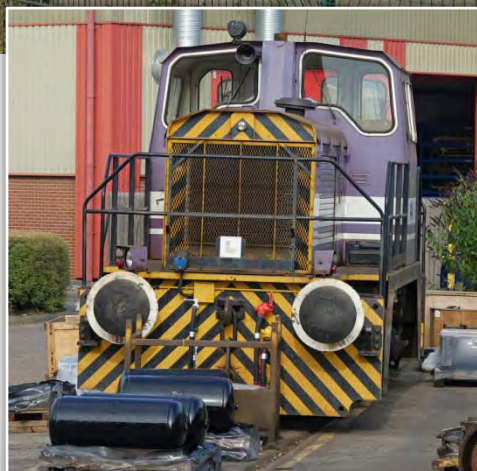
middle
08873 & [V325] 0-6-0DH
LHG
Barton-under-Needwood
19th July 2018

bottom 08615 LHG
Barton-under-Needwood
19th July 2018





above 08823 LHG
Barton-under-Needwood
19th July 2018



left 01548 LHG
Barton-under-Needwood
19th July 2018

below 08531 LHG
Barton-under-Needwood
19th July 2018



UNDERGROUND NEWS

All the RATs, Rail Adhesion Trains have been sent for scrap at CF Booths.

TfL is to award a contract to Siemens Mobility Ltd to build 94 state of the art 'Inspiro' underground trains for the Piccadilly line which when delivered from 2023 will replace the existing fleet over the next three years. The deal means Siemens is to build a facility at Goole to manufacture and commission the new trains. The design will be similar to the S6 walk through trains. The expectation is the new design will be used for all four deep level lines creating a unified fleet.

LIGHT RAIL & METRO NEWS

Metrolink by Geoff Hope:

August 2018: On the 5th August tram 3084 got tangled in a snapped overhead line at Cornbrook causing widespread disruption on the network. Repairs were completed by 16.00. To reduce the number of tram v car incidents, increased signage at four hot spots are to be introduced. On the 19th August due to a collision not involving a tram on the Ashton line no services operated between Ashton/Clayton Hall in either direction until the vehicles were moved.

From the 13th August there is an increased presence lasting 4 weeks by the Travel Safe Partnership on the Oldham/Rochdale line to reassure the public and deter crime and disruption. Over a seven month the following incidents have been reported, 66 assaults including a number against Travel Safe employees, 75 incidents of criminal damage including stone throwing at trams, damage to ticket machines and cars parked at Park & Ride stops. Juveniles aged 9-14 year olds were identified and dealt with via the Restorative Justice System (getting them back on the straight narrow hopefully) for incidents throwing rocks/stones at trams, as were a further three 14-15 year olds for tram surfing in Manchester City centre.

To add to the list of tram liveries, trams 3028 & 3071 (see right) are now in service in Rainbow livery celebrating Manchester Pride weekend. On the afternoon of the 14th August two 14 year olds were spotted on CCTV carrying a knife and BB gun at Benchill and were arrested at the next stop Martinscroft, the incident delaying services on the Airport line.



Observations for Monday 20th August: (100 trams in service)

Cornbrook 09.05-11.20:

Altrincham - Bury: 3003+3024, 3008+3037, 3011+3041, 3013+3058, 3016+3044, 3025+3039, 3027+3051, 3031+3054, 3032+3038, 3034+3047, 3036+3056

Altrincham - Piccadilly: 3010, 3015+3022, 3017, 3018, 3023+3048, 3043, 3057

East Didsbury - Shaw / Rochdale: 3002, 3026, 3028, 3035, 3050, 3053, 3064, 3066+3097, 3068, 3070+3092, 3071, 3072, 3073, 3086, 3087, 3089+3101, 3091+3107, 3093, 3094, 3098, 3100, 3104, 3106, 3110, 3116, 3118

Eccles - Ashton: 3021, 3062, 3067, 3078, 3080, 3082, 3083, 3095, 3099, 3108, 3112, 3114

Media City - Ethiad Campus: 3004, 3069, 3081, 3105, 3109, 3113, 3115

Airport-Victoria: 3029, 3033, 3052, 3075, 3076, 3077, 3079, 3085, 3090, 3102, 3117

Old Trafford Depot 11.25: 1020/23, 2001, 3088

Queens Road Depot 12.00-12.20: 1027/28, 3019, 3020, 3046, 3049, 3061, 3063, 3074, 3096

Victoria 12.25-13.35:

Bury - Piccadilly: 3001, 3006, 3007, 3009+3014, 3042, 3045+3059, 3060

Trams not seen: 3005, 3012, 3030, 3040, 3055, 3065, 3084, 3103, 3111, 3119, 3120



above Metrolink 3017
 (Vodafone ad) St
 Peters Square,
 Manchester,
 12th July 2018



left Metrolink 3030
 (Capital FM ad), Central
 Park, Manchester,
 24th July 2018



below Metrolink 3103
 (Hits Radio ad) St Peters
 Square Manchester,
 12th July 2018

OFF THE BEATEN TRACK: UPDATE

An occasional series on odd items of rolling stock found around the UK, not dumped or formally preserved, but in private use as part of a leisure facility, pub or holiday accommodation.

Grantown-on-Spey (East) Station: As reported in the May 2017 issue The former station at Grantown-on-Spey (East) is being transformed into the Highland Heritage & Cultural Centre featuring two former CI.411/412 4-CEP/BEP TSOLs 70292 & 70531. Much has happened in the intervening 14 months with a visit on the 23rd August 2018 revealing that it is nearing completion with an opening date planned this year. Nothing definite but it will be 50 years in November 2018 since the last train called at Grantown-on-Spey (East) station.



above looking from the eastern end of the site, 70531 & 70292 with outside oven, the body and bogies are now held rigid with welded vertical bars outside of each axle cover

The coaches are now in permanent positions staggered alongside each other with part of their sides removed to form a communal area between the two. The main entrance (see above) is from the

northern platform adjacent the superbly renovated station building, with fire escapes from one end of each carriage. An external oven has been built on the opposite platform connecting to 70292.



70292, new toilet block and re-furbished station building

I said in the previous report it was not clear as to what was happening with the remaining eastern part of the platform severed by the access road, well that is now solved. A large miniature railway is being built on the northern platform which then heads east before circling through new landscaping back to the platform (see below).



here & above the platform on the western side of the access road with mini railway under construction

FREIGHT MATTERS

To allow members to keep their copy **UK Wagons** as up to date as possible, changes are provided via this spot every month. Please let Trevor Roots know if you have any amendments or wish pass on any other helpful wagon information, contact details on page 2.

also see **EASTLEIGH WORKS REPORT** for further updates

Thanks to the following for information: Ronnie Dunn, Alex Ford, Rob Anderson, Charles Baldwin

Out of Store: 110089, 394846

Add to Book: (Barrier Vehicles) **IWB** 33.80.2797.589-9/632-7/655-8/698-8

To Store: 3, **Eastleigh Works** (from York Yard South) 3

New: **TEA Bogie Tanks** 81.70.7836.021 to 041 have arrived in the UK.

OTP NEWS:

New: Linsinger MG31-UK Milling Machine DR 79101 (99.70.9127.006-3) for Crossrail



above as reported in the March 2017 issue, here is the first of the two new Corrective Rail Grinders DR 79301 – 79304 and second to be illustrated, seen approaching Eastleigh on Ashurst – Micheldever Oil Sdgs, (09.27) 19th August 2018 (Chris Addoo)

OTP PHOTO SPOT

ABC Electrification Train not previously illustrated this seven car track machine refurbished in 2015 was seen at West Calder at 17.24 on the 17th July 2018 by Iain Gardiner. In order were CTF28 + CTF28 + RT250 then a split with APV250 + RSM9 + RSM9 + PT500



CTF28 (99.70.9231.002-5) + CTF28 (99.70.9231.003-3)
+ RT250 (99.70.9231.001-7)



a closer view of RT250 (99.70.9231.001-7)



above APV250 (99.370.9231.007-4) + RSM9 (99.70.9231.006-6) + RSM9 (99.70.9231.005-8) + PT500 (99.70.9231.004-1)

SIGNAL BOX SURVEY

Marcheys House: Located on the line between Lynemouth and North Blyth this box controls the level crossing on the road between Stakeford and West Sleekburn just south of the River Wansbeck in County Durham. Built in 1895 it is a NE type N2 and has a McKenzie & Holland 16 lever frame. The photo below was taken looking north on the 21st January 2014 by Ray Smith



STOCK CHANGES

It is hoped that all major changes recorded below will help you keep the **UK Combine**, **UK Pocket Book**, **UK Locomotives** and **UK Name Directory** up to date, (numerous pool code changes will not be recorded). In order to compile as accurate and up to date list as possible, can members please pass on their observations, particularly name changes and multiple unit reformations to the editor, **Trevor Roots**. Where possible, photos of new nameplates will be included as and when a suitable photo is sourced from members.

Misc. News:

60002 is now with GBRf and driver training from Tyne Dock has begun with 60047/87 acquired by GBRf.

68020/32/34 are all in TPE livery with testing now underway with Mk5 set

92028 has been fitted with Dellner couplers
 CI.802 IETs started services to Cornwall on the 20th August.

All the 9-car Pendolinos are in the new livery

New:

DMUs: 195001

EMUs: 800105/109, 802012/16

Re-numbered:

Locos: 66008 to 66780

Coaches:

316 to 975608 354 to 99354 3106 to 99122

4931 to 99329 4954 to 99326 5044 to 99327

17102 to 99680 18893 to 99712

35463 to 99312

Transferred / Stored:

Locos:

56018/301 (CDF) 60026/56/96 TO

60085 Tuebrook 60095 MY

Steam: 7819 SVR 7821 SWI

Coaches: 96371 (CDF)

40424/26/33 (EY)

94166/76/95/97, 94423, 95763 (BU)

DMUs: 79976 BO

EMUs: 365503 IL

36501/505/507/515/527/531/535/541 CP

Names (* re-applied)

221114 *Royal Air Force Centenary 1918-2018*

378135 *Daks Hamilton*

Recent but not Previously Illustrated:



91118 as reported in Mar / Apr 2018
 (Terry Lea)



375619 as reported in Sep / Oct 2017
 (Terry Lea)



Mk2 3360 as reported in Sep / Oct 2017



Mk2 3362 as reported in Sep / Oct 2017



Mk1 Pullman 351 as reported in Sep / Oct 2017



Mk1 Pullman 99025

as reported in Jul / Aug 2017

The following are plates going back to Jan 2012 submitted that I have finally managed to fit in, more to follow



60020 as reported in Feb 2016



60044 as reported in Oct 2015 (Bill Wilson)



08810 as reported in Sep 2015 (Bill Wilson)



43026 as reported in May 2015 (Terry Lea)

Laira Diesel Depot
50 years 1962 - 2012

08644 as reported in Mar 2015 (Bill Wilson)

Cambridge PSB

66733 as reported in Oct 2014

CLIC Sargent

WWW.CLICSARGENT.ORG.UK

60087 as reported in Jul 2014
(Lawrence McCormick)

CHIEF ENGINEER

37198 as reported in May 2014 (Bill Wilson)

Demelza

37219 as reported in May 2014 (Colin James)

ANTHONY WRIGHTON

1944 - 2011

DR 98003 as reported in Dec 2013

Bradwell

08649 as reported in Nov 2013 (Colin James)

Chad Varah

57302 as reported in Nov 2012 (Bill Wilson)

Sorrento

66709 as reported in Jun 2012 (Colin James)

**Bluebell
Railway**



66739 as reported in Apr 2013 (Robert Parker)

DP WORLD
London Gateway

66185 as reported in Oct 2013

The Sheffield Star
125 Years

43055 as reported in Sep 2012 (Terry Lea)

Dereham Neatherd High School

1912 - 2012

37003 as reported in Sep 2012 (Bill Wilson)

AMETHYST

Mk1 99352 as reported in Jun 2012 (Bill Wilson)

Names Removed:

- 43139 *Driver Stan Martin 25 June 1950 – 6 November 2004*
43189 *RAILWAY HERITAGE TRUST*
159005 *WEST OF ENGLAND LINE*
390001 *Virgin Pioneer*
390042 *City of Bangor / Dinas Bangor*
390043 *Virgin Explorer*
390047 *CLIC Sargent*
390049 *Virgin Express*
390050 *Virgin Invader*

For Scrap:

CF Booth, Rotherham 71949 from 321401

New Pool Code:

GBGT GB Rf Cl.60

The following is a full updated list of new or re-applied names since Jan 2012 that we have not yet illustrated on all stock listed in our **NAME DIRECTORY** (steam & industrial locos excepted). Please note I only want photos of nameplates in focus, straight and centred side on. Photos supplied of those recently requested will be shown as and when space permits.
(* re-applied, \$ temporary, # supplied but not straight on or in focus)

D&E Locos:

- 01571 *ALEX*
08460 *SPIRIT OF THE OAK*
08611 *Longsight TMD (since removed)*
08641 *Pride of Laira*

08648 Amanda
 08757* EAGLE CURC
 08790 M.A.Smith
 08993*# Ashburnham
 20096 Ian Goddard 1938-2016
 31106 Spalding Town
 D6501* Sea King
 37800 Cassiopeia
 43132 Aberdeen Station 150th Anniversary
 45133 \$ Brian Lockey (one side only)
 Gerald Lambert (one side only)
 66748 West Burton 50
 66776 Joanne
 66789 British Rail 1948-1997
 88007 Electra

Steam Locos:

90775 THE ROYAL NORFOLK REGIMENT

DMUs / DEMUs:

150275 # The Yorkshire Regiment Yorkshire
 Warrior
 221114 Royal Air Force Centenary 1918-2018

EMUs:

375710 Rochester Castle
 378135 Daks Hamilton
 390003 Blackpool Belle

Track Machines:

DR 73939 Pat Best
 DR 77001 Anthony Lou Phillips
 DR 98923+98973 Chris Lemon

Coaches:

348 Topaz
 1211 CAR No. 1211
 1566 Caerdydd
 3229 SNOWDON
 3384 PEN-Y-GHENT

NEW STOCK

Though in the past I have attempted to individually show all new stock, with the flood of new stock recently delivered and proposed over the next few years and less pages to work with, it is now impractical to do so. I will continue however to show all new locos and smaller classes of units and coaches but I will only show a representative selection of the latter types, particularly from as many different members / different locations as possible or to illustrate a comparison. So if a particularly unit has not been shown but you photograph it in a more 'unusual' location within a reasonable time of it entering service then I will try to include it.



above with CI.802/0s now in service 802006 + 802007 are seen on 1L48 Swansea - Paddington, Swindon (11.30) 18th August 2018 (Colin Pidgeon)



above the fourth of the NR DVTs not yet illustrated DVT 82129 Loram, Derby (10.30) 16th August (Derek Everson) 82111 was in the July 2014 issue with 82124 & 82145 in the November 2014 issue

LIVERIES

*This section will endeavour to show all new liveries / variations or those existing ones where not carried on the stock before. Liveries that become 'extinct' will also be covered. As with names, it may take a while after the livery application before a photo is sourced from members. New liveries may also be shown in other articles: 66065 in **PRESERVATION GALA NEWS** in the **Summer TRACKS extra**.*



above 66413 in its new Wyoming & Genesee livery, Northampton (12.28) 28th August 2018 (Graham Stockton)



left 66413 showing the other side on 4M93 14.32 Felixstowe North - Lawley Street, Ipswich (15.15) 20th August 2018 (Keith Partlow)

below 390008 wearing its Rennie McIntosh moustache on 1S39 B'ham New Street – Carlisle, Crewe (08.07) 21st July 2018 (Colin Pottle)





above 390107 the first CI.390/1 Pendolino seen in the revised VTWC flowing silk livery, Glasgow Central, 24th August 2018 (Iain Gardiner)



above in use by WMR 319220 in plain grey livery, Northampton (11.49) 28th August 2018 (Graham Stockton)

left 66175 Oxford (11.58) 19th August 2018 (Derek Everson)



below with the application of the interim orange and silver livery for the short term WMR stock gathering pace there are now 9 in the new livery 323202-205/209/212/213/216/220



323202 University, Birmingham (13.15) 21st August 2018 (James Holloway)



above 43188 with the dragon gaining a yellow shirt in honour of Geraint Thomas winning the Tour de France, Swindon (10.55) 13th August 2018 (Colin Pidgeon)



above a couple more CI.43s in GWR green left 43189, right 43170 Swindon (09.45) 25th August 2018 (Colin Pidgeon)

OTP PHOTO SPOT: 2



above one of those tampers transported to site by road, Volker Rail Plasser & Theurer Beaver 90/4 ZW 90.70.9908.009-2 in use on the track doubling between Dyce and Aberdeen, 13th August 2018

Original No	Intro		Re-numberings				Date	4th / 8th	Builder (Re-built)	Works No * Allocated	Status	Store Wd Date	Disp Date	Location / Disposal Site (Date Exported)
	Date	1st / 5th	Date	2nd / 6th	Date	3rd / 7th								
○ D1593	06/64	○ 47467	11/73					BR CE	N/A	X	12/98	04/00	EWS Wigan CRDC	
○ D1594	06/64	○ 47468	06/74	○ 47300	08/92			BR CE	N/A	X	08/95	05/02	EMR Kingsbury (HNRC)	
○ D1595	06/64	○ 47469	02/74					BR CE	N/A	X	03/89	12/89	MC Metals, Springburn, Glasgow	
○ D1596	06/64	○ 47470	01/74					BR CE	N/A	X	11/91	07/95	ABB Crewe (MRJ Phillips)	
○ D1597	06/64	○ 47026	05/74	○ 47597	12/83	○ 47741	04/94	BR CE	N/A	X	01/03	05/08	EMR Kingsbury	
○ D1598	06/64	○ 47471	02/74					BR CE	N/A	X	06/96	02/05	Ron Hull Jnr, Rotherham	
○ D1599	06/64	○ 47027	02/74	○ 47558	11/80	○ 47722	03/95	BR CE	N/A	X	03/02	05/07	EMR Kingsbury	
○ D1600	06/64	○ 47472	01/74	○ 97472	09/88	○ 47472	06/89	BR CE	N/A	X	04/91	05/97	EWS Old Oak Common (MRJ Phillips)	
○ D1601	06/64	○ 47473	01/74					BR CE	N/A	X	06/98	03/98	Adtranz Crewe (MRJ Phillips)	
○ D1602	07/64	○ 47474	02/74					BR CE	N/A	X	03/00	10/05	TJ Thomson, Stockton	
○ D1603	07/64	○ 47475	04/74					BR CE	N/A	X	07/99	03/08	TJ Thomson, Stockton	
○ D1604	07/64	○ 47476	05/74					BR CE	N/A	X	01/00	04/04	CF Booth, Rotherham	
○ D1605	07/64	○ 47028	04/74	○ 47559	11/80	○ 47759	01/94	BR CE	N/A	X	01/03	01/08	Ron Hull Jnr, Rotherham	
○ D1606	07/64	○ 47029	04/74	○ 47635	01/86	47754		BR CE	N/A	P	02/04		EOR	
○ D1607	07/64	○ 47477	03/74					BR CE	N/A	X	06/92	07/93	CF Booth, Rotherham	
○ D1608	07/64	○ 47478	01/74					BR CE	N/A	X	07/95	04/06	EMR Kingsbury (HNRC)	
○ D1609	08/64	○ 47030	12/73	○ 47618	08/84	○ 47836	08/89	BR CE	N/A	X	04/03	08/07	EMR Kingsbury	
		○ 47780	01/94											
○ D1610	08/64	○ 47031	04/74	○ 47560	07/80	○ 47832	06/89	BR CE	N/A	A				
○ D1611	08/64	○ 47032	11/73	○ 47662	12/86	○ 47817	07/89	BR CE	N/A	R			see Class 57 - 57311	
○ D1612	08/64	○ 47479	10/73					BR CE	N/A	X	09/92	09/93	CF Booth, Rotherham	
○ D1613	08/64	○ 47033	03/74					BR CE	N/A	X	04/99	03/08	TJ Thomson, Stockton	
○ D1614	08/64	○ 47034	03/74	○ 47561	10/80	○ 97561	09/88	BR CE	N/A	X	09/96	03/97	Adtranz Crewe (MRJ Phillips)	
○ D1615	08/64	○ 47035	02/74	○ 47594	09/83	○ 47739	07/94	BR CE	N/A	S			ZG	
○ D1616	09/64	○ 47480	11/73	○ 97480	09/88	○ 47971	07/89	BR CE	N/A	X	03/99	11/01	EMR Kingsbury (HNRC)	
○ D1617	09/64	○ 47036	03/74	○ 47562	11/79	○ 47672	07/91	BR CE	N/A	A				
		○ 47760	03/94											

Previous No.	Next	Previous No.	Next	Previous No.	Next	Previous No.	Next	Previous No.	Next	Previous No.	Next	Previous No.	Next
8614		8619		9003	55003	9008	55008	9012	55012	9016	55016	9020	55020
8615		8620		9004	55004	9009	55009	9013	55013	D9016	55016	9021	55021
8616		9000	55022	9005	55005	D9009	55009	9014	55014	9017	55017		
8617		9001	55001	9006	55006	9010	55010	9015	55015	9018	55018		
8618		9002	55002	9007	55007	9011	55011	D9015	55015	9019	55019		

Mainline Diesel Locos: Tops Nos. 'D' Prefixes removed for clarity and only shown where loco re-numbered in preservation

Previous No.	Next	Previous No.	Next	Previous No.	Next	Previous No.	Next	Previous No.	Next	Previous No.	Next	Previous No.	Next
82113	19001	8028	20028	8057	20057	8086	20086	8115	20115	D8142	20142	8169	D8169
8001	20001	8029	20029	8058	20058	8087	20087	8116	20116	8143	20143	8170	20170
8002	20002	8030	20030	8059	20059	35	20087	8117	20117	8144	20144	8171	20171
8003	20003	8031	20031	20302	20059	8088	20088	8118	20118	8145	20145	8172	20172
8004	20004	8032	20032	8060	20060	8089	20089	8119	20119	8146	20146	20305	20172
8005	20005	8033	20033	8061	20061	8090	20090	34	20119	8147	20147	8173	20173
8006	20006	8034	20034	8062	20062	8091	20091	8120	20120	8148	20148	20306	20173
8007	20007	8035	20035	8063	20063	8092	20092	8121	20121	8149	20149	8174	20174
D8007	20007	8036	20036	8064	20064	8093	20093	8122	20122	8150	20150	8175	20175
8008	20008	8037	20037	8065	20065	8094	20094	8123	20123	8151	20151	8176	20176
8009	20009	8038	20038	8066	20066	8095	20095	8124	20124	8152	20152	8177	20177
8010	20010	8039	20039	8067	20067	8096	20096	8125	20125	8153	20153	8178	20178
8011	20011	8040	20040	8068	20068	8097	20097	8126	20126	8154	20154	8179	20179
8012	20012	8041	20041	8069	20069	8098	20098	8127	20127	D8154	20154	8180	20180
8013	20013	8042	20042	8070	20070	8099	20099	8128	20128	8155	20155	8181	20181
8014	20014	8043	20043	8071	20071	8100	20100	8129	20129	8156	20156	8182	20182
8015	20015	8044	20044	8072	20072	8101	20101	8130	20130	8157	20157	8183	20183
8016	20016	8045	20045	8073	20073	8102	20102	8131	20131	8158	20158	8184	20184
8017	20017	8046	20046	8074	20074	8103	20103	8132	20132	8159	20159	8185	20185
8018	20018	8047	20047	8075	20075	8104	20104	8133	20133	8160	20160	8186	20186
8019	20019	8048	20048	8076	20076	8105	20105	20303	20134	8161	20161	8187	20187
8020	20020	8049	20049	8077	20077	8106	20106	8134	20134	8162	20162	8188	20188
8021	20021	8050	20050	8078	20078	8107	20107	8135	20135	8163	20163	8189	20189
8022	20022	8051	20051	8079	20079	8108	20108	8136	20136	8164	20164	8190	20190
8023	20023	8052	20052	8080	20080	8109	20109	8137	20137	8165	20165	8191	20191
20301	20023	8053	20053	8081	20081	8110	20110	8138	20138	8166	20166	8192	20192
8024	20024	8054	20054	8082	20082	8111	20111	8139	20139	8167	20167	8193	20193
8025	20025	8055	20055	8083	20083	8112	20112	8140	20140	8167	20167	8194	20194
8026	20026	8056	20056	8084	20084	8113	20113	8141	20141	8168	20168	8195	20195
8027	20027	8057	20057	8085	20085	8114	20114	8142	20142	20304	20168	2006	20194
													20313
													2

ICRS SALES

For info on our range of Books and Sundries see below or visit our website. Orders can either be:

ideally via BACS, bank details on request from editor@intercityrailwaysociety.org
online via PayPal at www.intercityrailwaysociety.org

or by post from **ICRS, Mill of Botary, Cairnie, Huntly Aberdeenshire AB54 4UD**

Please make cheques payable to **ICRS**

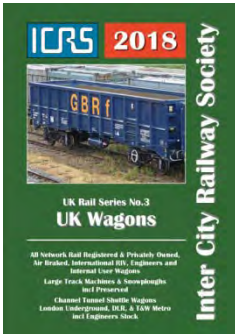
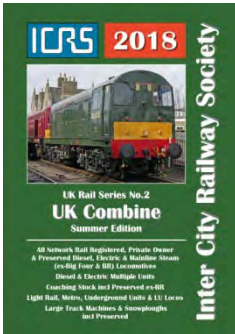
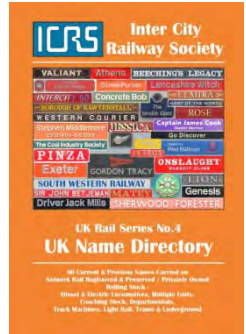
P&P is **FREE** to the **UK** for orders over £7.99, otherwise add £1.50

As volunteers we do our very best to dispatch items as soon as possible, but please allow 14 days for delivery, especially when a new book has just been released, or 28 days for embroidered clothing if not in stock.

If you have not received your book after that time please **ONLY** then contact

Trevor / Christine (see p2 for details)

UKRS01 & UKRS05 are A6 size, all others are A5 size. All books are wire bound, allowing them to be laid flat, except the original perfect bound version of **UKRS01**



BOOKS: (Members receive up to 30% discount on ICRS books)

Titles:		Size	Updated to	Member	Non- Member
New:	UKRS01WB UK Pocket Book Summer Ed 2018 (wire)	A6	mid Jul18	£8.00	£11.00
	UKRS02B UK Combine Summer Ed 2018	A5	mid Jul18	£12.50	£17.00
	UKRS10 Ultimate Sighting File	A5	mid Jul18	£11.00	£15.00
	UKRS11 Ultimate Sighting File	A5	mid Jul18	£10.00	£13.50
	UKRS11 Vol.2 – Shunters, Mainline Electric & Prototype Locos				
Current:	UKRS01 UK Pocket Book 2018 (perfect bound)	A6	24 th Jan18	£8.00	£11.00
	UKRS03 UK Wagons 2018	A5	1 st Mar18	£10.00	£13.50
	UKRS04 UK Name Directory	A5	10 th Jul17	£11.00	£15.00
	UKRS05 UK Locomotives 2018	A6	24 th Jan18	£4.50	£6.00

SUNDRIES: (please add £1.50 P&P for orders under £7.99 in total)

ICRS branded notebook – 75 pages	£2.50
ICRS branded notebook – 50 pages	£2.00
ICRS pin badge	£2.50
ICRS printed pen	£0.50
Pocket Book cover (for original version only with spine)	£1.50
TRACKS A5 Cordex binder (12 issues @ 48 / 64 pages: 2014-16)	LARGE £5.00
TRACKS A5 Cordex binder (12 issues @ 32 / 40 pages: 2011-13 & 64 pages: 2017)	MEDIUM £5.00
Polo Shirts: (name & logo) (S / M / L / XL / XXL / 3XL / 4XL) NAVY / BURGUNDY / GREEN	£20.00
Baseball Caps: BLACK / NAVY / BURGUNDY	£12.00

We still have a supply of the original polo shirts in NAVY & WHITE with logo only which can be bought direct from our sales stand for £7.50 / £5.00

Details of books and sundries can be found on our website and are shown in **TRACKS** from time to time when released or advertised. Order forms for posting can be downloaded from the website.