

# TRACKS



**Inter City Railway Society - June 2021**



# Inter City Railway Society

founded 1973

[www.intercityrailwaysociety.org](http://www.intercityrailwaysociety.org)

Vol 49 No.5 Issue 575 June 2021



The content of the magazine is the copyright of the Society  
No part of this magazine may be reproduced without prior permission of the copyright holder

- President:** **Simon Mutten** - [simonmutten@btinternet.com](mailto:simonmutten@btinternet.com) (01603 715701)  
Coppercoin, 12 Blofield Corner Rd, Blofield, Norwich, Norfolk NR13 4RT
- Treasurer:** **Peter Britcliffe** - [treasurer@intercityrailwaysociety.org](mailto:treasurer@intercityrailwaysociety.org) (01429 234180)  
9 Voltigeur Drive, Hart, Hartlepool TS27 3BS
- Membership Sec:** **Colin Pottle** - [membership@intercityrailwaysociety.org](mailto:membership@intercityrailwaysociety.org) Mob (07840 401045)  
Flat 1, Harworth House, London Road, Kettering, Northants NN16 0EF
- Secretary:** **Christine Field** - [secretary@intercityrailwaysociety.org](mailto:secretary@intercityrailwaysociety.org)  
contact details as below for Trevor
- Chairman:** filled by senior officials as required for meetings
- Magazine Editor:** **Trevor Roots** - [editor@intercityrailwaysociety.org](mailto:editor@intercityrailwaysociety.org) (01466 760724)  
Mill of Botary, Cairnie, Huntly, Aberdeenshire AB54 4UD Mob (07765 337700)
- Sightings: **James Holloway** - [sightings@intercityrailwaysociety.org](mailto:sightings@intercityrailwaysociety.org) (0121 744 2351)  
246 Longmore Road, Shirley, Solihull B90 3ES
- Photo Database: **Colin Pottle**
- Publications Manager:** **Trevor Roots** - [publications@intercityrailwaysociety.org](mailto:publications@intercityrailwaysociety.org)  
Publications Team: **Trevor Roots / Eddie Rathmill**
- Website Manager:** **Trevor Roots** - [website@intercityrailwaysociety.org](mailto:website@intercityrailwaysociety.org) contact details as above
- Social Media:** **Gareth Patterson**
- Sales Manager:** **Christine Field** contact details as above for Trevor
- Visits Co-ordinator:** **Tony Whitehead** – [anthw884@gmail.com](mailto:anthw884@gmail.com) / **Trevor Roots / Christine Field**

## Contents:

Officials Contact List.....	2	All Our Yesterday's .....	63-65
Society Notice Board.....	3-6	Coaching Matters .....	45
Events.....	6	Gone But Not Forgotten .....	45
ICRS Sales .....	80	Nostalgia Corner:	
Regular Current News / Sightings:		Deltics .....	55
Eastleigh Works Report.....	7-11	Photo Spot:	
Franchise / Network News.....	12-26	NR Test Trains .....	27-30
Freight Matters .....	74	Rail Tours .....	58-62
Infrastructure News .....	53-54	Toton Yard .....	56-57
Out & About Sightings .....	47-52	Preservation:	
Stock Changes.....	73-75	Galas.....	68-70
Reformed Stock.....	78-79	News.....	41-42
Liveries.....	77	Photo Spot: Steam .....	31
Nameplate Photos Required.....	75	Prototype EMUs.....	72
New Stock.....	76	Retro Photo Spot:	
Transfers.....	79	Industrial Diesels .....	26
Traffic & Traction News .....	32-40	RTC Test Vehicles .....	52
Tram, Light Rail & Metro News.....	71-72	Shunter Spot.....	46
Other Feature Articles:		Stock Moves .....	43-45
Accidents .....	30	Stored Stock : Ely.....	11
		Viaduct / Bridge Survey.....	66-67

**Front Cover Photo:** The end of another era for HSTs on the MML with EMR 43274 t&t 43102 in their last week of operation on 1B23 06.34 Leeds - St Pancras Int passing West Hampstead Thameslink at 10.04 on the 7<sup>th</sup> May 2021 (Toby Radziszewski)

£3.00 where sold separately

Printed & distributed by: Oxuniprint Ltd, Unit 10, Oxonian Park, Langford Locks, Kidlington, Oxford OX5 1FP

# SOCIETY NOTICE BOARD

## Editor's Comments:

What a month, covid restrictions eased, unless you live in Glasgow (not happy bunnies), preserved lines opening up, numerous mainline charters, more new stock, broken new stock, more old stock phased out as the new timetable introduced, more old stock scrapped, bad news on visits and our printer...oh and the biggest shakeup of the railway system in 25 years !! So, with everyone finally admitting privatisation has failed, with no real competition as envisaged, over complicated and fragmented with no real transport integration but confusing ticketing, we now have a radical and suitably hybrid new plan proposed to be introduced by 2023 under the umbrella of Great British Railways (GBR). Without having to precis the 116 page White Paper, the written statement announced to the House of Commons on the 20<sup>th</sup> May 2021 more or less sums up the aims....more comments on the other side.

*The Williams-Shapps Plan for Rail fully reflects the independent recommendations of Keith Williams, to whom the government is grateful for his thorough work since 2018.*

*Williams identified serious issues facing the railways before Covid struck; the pandemic has exacerbated some of these and added more. The government has provided unprecedented support to keep the railways running during the pandemic. Now, we look to the future – today we are setting out an ambitious plan to ensure that the system is ready to meet these challenges.*

*Today's railway is fragmented – numerous bodies with different incentives lead to a lack of joined-up thinking. No single organisation is accountable for integration, planning and leadership across infrastructure, passenger services and freight operations.*

*Even before Covid, the franchising model for passenger services had become unsustainable, with multiple failing franchises, delayed competitions and dwindling market confidence. East Coast and Northern had already failed and the government had to step in.*

*To meet these challenges this government is introducing the biggest reform to the railway in 3 decades. We are committed to delivering a rail system that is the backbone of a cleaner, greener public transport system, offering passengers a better deal and greater value for money for taxpayers. That means getting the trains to run on time, providing a better quality of service and having a firm control of the sector's costs.*

*To bring about change on the scale that is needed:*

- *We will end 3 decades of fragmentation by bringing the railways back together under a new public body with a single, national leadership and a new brand and identity, built on the famous double arrow. Great British Railways (GBR) will run and plan the network, own the infrastructure, and collect most fare revenue. It will procure passenger services and set most fares and timetables.*
- *We will make the railways easier to use by simplifying fares and ticketing, providing more convenient ways to pay with contactless, smartphone and online, and protecting affordable walk-on fares and season tickets. Rail services will be better coordinated with each other and better integrated with other transport services such as trams, buses and bikes.*
- *We will keep the best elements of the private sector that have helped to drive growth. GBR will contract private partners to operate the trains to the timetable it sets. These contracts will include strong incentives for operators to run high-quality services and increase passenger demand.*

*The contracts are not one-size-fits-all, so as demand recovers, long-distance routes will have more commercial freedom to attract new passengers. Freight is already a nimble, largely private sector market and will remain so, while benefiting from the national coordination, new safeguards and rules-based access system that will help it thrive.*

*We will grow, not shrink, the network, continuing to invest tens of billions of pounds in new lines, trains, services and electrification.*

*We will make the railways more efficient. Simpler structures and clear leadership will make decision-making easier and more transparent, reduce costs and make it cheaper to invest in modern ways to pay, upgrade the network and deliver new lines. The adversarial blame culture will end and everyone across the sector, including train operators, will be incentivised to work towards common goals, not least managing costs.*

*These changes will transform the railways for the better. They will also make the sector more accountable to taxpayers and government. Government ministers will have strong levers to set direction, pursue government policies and oversee delivery to ensure the railways are managed effectively and spend public money efficiently. Great British Railways will be empowered – a single, familiar brand with united, accountable leadership.*

*These reforms represent a bold new offer to passengers – of punctual and reliable services, simpler tickets and a modern, green and innovative railway that meets the needs of the nation. In summary, our ambitious rail transformation programme will deliver 10 key outcomes:*

- *a modern passenger experience*
- *a retail revolution*
- *new ways of working with the private sector*
- *economic recovery and financial sustainable railways*
- *greater control for local people and places*
- *cleaner, greener railways*
- *bold, new opportunities for rail freight*
- *increased speed of delivery and efficient enhancements*
- *skilled, innovative workforce*
- *a simpler industry structure*

*This is not renationalisation, which failed the railways, rather it is simplification. While Great British Railways acts as the guiding mind to coordinate the whole network, our plan will see greater involvement of the private sector – private companies will be contracted to run the trains, with stronger competition to run services.*

*Our reforms will also unleash huge new opportunities for the private sector to innovate in areas such as ticket retailing and data that can be used by passengers to better plan their journeys.*

*We look forward to building this new vision for Britain's railways in collaboration with the sector. We are proud to set out plans to support our railways and serve our country with a system that is efficient, sustainable and run in the public interest.*

Before commenting further on the proposals, one of the most frustrating things I noticed on the day of the announcement was how little news coverage it was given considering the importance and that £12 billion has been poured into saving the railways over the past year. A few seconds was all it got against endless rolling coverage of the BBC / Martin Bashir / Princess Diana interview scandal and the imminent Israeli / Palestinian ceasefire. Following that it still hasn't had any meaningful airtime, fighting against whether anyone will be allowed to travel abroad for a holiday or the Indian variant !! I might be biased but surely there should be more attention from the media when it is known what a big economic driver a good railway system can be and that it will play a big part in reaching transport decarbonisation targets. I suppose though it's too much to ask from the media which just likes sensationalist mis-reporting of unfortunate incidents like snow and leaves or viewing the railways always through the protractors. They can't even put up the correct photo when they do feature railways in a report !!

Certainly the objectives of the White Paper are laudable and will be welcomed by most though it is sad to see that opposition politicians and the unions have seen fit to trash it already, wanting full nationalisation or going into the detail before that has even been thrashed out. We have all got to pull together if a vibrant rail system is to survive and thrive with a can do attitude. Cutting out the blame and delay compensation culture will help where there are approx 400 employees arguing who is to blame when delays occur, which in the end just passes money back and forth through the system. Without this even simple things like holding a connecting service when a mainline service is delayed will benefit passengers. Remember it was the duplication and constant cost attribution between companies that was one of the major contributors to the 1923 grouping. Freight certainly needs to be put on an equal par with passenger traffic for post pandemic economic recovery. From an enthusiast point of view, have all the myriad of liveries by the TOCs, now to be called Passenger Service Operators, all been a waste of effort and money, we'll have to see what the new corporate livery will be. There will be issues with the devolved administrations of Wales and Scotland and particularly the latter as it has successfully already established a unified brand and distinctive livery under ScotRail. It will therefore be interesting to see what extra conflict this brings which will be ironic as I suspect an unsaid underlying goal of GBR is to unify the whole of the country to stave off independence. Much work has yet to be done in the next

two years, but a start will shortly be made with new ticketing options to be introduced in June. Whether the more flexible season ticket proves of any use over longer distances where existing savings can already be made, we will have to see. The first Passenger Service Contracts are to be launched in 2022. If nothing else this plan will see the railways back in the hands of professionals and away from stifling micromanagement by the DfT and the Treasury. It is going to be a lively next few years as traffic picks up hopefully with all sorts of interim measures needed..., we might even see new stock finally in service and without breaking. As they say, watch this space.

Now for news re the Society. As you will read in **EVENTS** the only news so far is bad and out of the blue, as I was about to send this issue off to the printers, OUP have decided to abandon printing in favour of digital media. This means I have to go through the process of finding another printer having been 'poached' by OUP just 12 issues ago. Everything was perfect with the quality of print, their green credentials re paper and packaging and the price allowing an 80 page magazine. Hopefully this can all be replicated, but as the July issue will be our last with OUP it doesn't leave me much time, time I would rather be spending on catching up with domestic issues or simply enjoying the sun which finally arrived.

On a last point with again so much topical news, not least the GBR White Paper announcement, I have had to bump **RAILWAY GLOBETROTTERS** into July along with a couple more articles, so I am hoping June is much quieter on the news front.

**Errata: May 2021:** p77 - the two industrial shunters shown scrapped on p77 should read 255 [5418] & 267 [5464], 11202 shown scrapped at Sims Metals, Beeston is an error as already deleted.

**Sales:** With hopefully more of you getting out and about, hopefully you have bought one or more of our books. If you haven't now is the time especially as orders have tailed off in recent weeks so please support the effort of compiling and producing the books by buying them.

Just a reminder that If you live in the Birmingham area, we are pleased to say that our sole bookshop outlet, Tornado Books & Hobbies, has re-opened following lockdown so why not drop in. If you haven't bought any of our books it is a chance to see them in the flesh as we are still a way from having any visits / shows to attend. Their address is 68 Dalton Street which is a 10 min walk from New Street Station Head straight up Corporation Street, which continues the other side of Queensway roundabout, then right into Newton Street and right again into Dalton Street which runs parallel to Corporation Street.

**Website: Photo Galleries:** As many of you may already know we have a page on our website which links to members Flickr sites etc. If there are any of you with sites who would like to be added please send me the link and I will add you.

**TRACKS Articles:** I have not had time to add links for articles for the last 3 years but hopefully that is a task I will get on top of soon. As members you might not be aware of this useful feature, but it is a good way to quickly find an article on a particular subject...when I get it up to date !!

**Membership Matters: New Members:** (10) – a warm welcome to you all.

(\* ex-members re-joined) (AFC – Additional Family Child, AFA – Additional Family Adult)

**Simon Batty** (Doncaster), **Stuart Benson** (Burton-on-Trent), **Kevin Davies** (Newport), **Darren Dean** (AFA) (Bristol), **Joseph Dean** (Bristol), **Peter Driver** (Chesterfield), **John Duggett** (Kings Langley), Mark **Dutton** (Solihull), **Thomas Findlay** (London), **Christopher Lascelles** (Hoddesdon), **Michael Roome\*** (Nottingham), **David Sykes** (Poulton Le Fylde)

**Obituary:** Sadly, we have lost Robert Fowler (73) from Whitchurch, Berks. Condolences go to his family and friends.

**Standing Orders: PLEASE, PLEASE** can all those with SOs amend them to the correct current rate of **£20**. Both Colin and Peter are still having to chase up far too many to request the outstanding difference when due for renewal.

### **Society Magazine TRACKS:**

**TRACKS** is distributed direct from the printers to members in a clear compostable wrapping with an address carrier sheet (reverse printed with a Renewal / Reminder form if appropriate). If any member fails to receive their copy after one week from the estimated delivery date below then please contact the **Editor**. For current info during the month refer to the **TRACKS** page of our website.

**Next issue: July 2021**, the latest date for articles / info is **Wed 30<sup>th</sup> June 2021**  
delivery to members: **PDF Tues 6<sup>th</sup> July 2021** with **Print** copies posted out 7 days after pdf  
for updates please check the **TRACKS** page on the website

**Magazine Contributors:** Thanks to **Chris Addoo, Nigel Benning, Keith Blackman, Mike Brook, Steve Boulton, Geoff Bowater, Rod Bryant, Spencer Conquest, Danny Coyne, Sean Davies, Dennis Dey, Neil Dix, Robbie Ellis, John Evans, Derek Everson, Tony Falloon, Alex Ford, Paul Fuller, Iain Gardiner, Steve Gillam, John Goodyer, Michael Green, Martin Hall, Alan Hardcastle, Barry Hayward, Roy Hitche, James Holloway, Geoff Hope, Lorraine Hopkins, Nigel Hoskins, Harold Hull, David Inett, Colin James, Alan Jones, David Knight, Terry Lea, Bradley Marshall, Ian McAlpine, Ian McNeil, James McPhail, Steve Milsom-Payne, Stuart Moore, Alan Pace, Keith Partlow, Gareth Patterson, Colin Pottle, Toby Radziszewski, Steve Revill, David Rice, Adrian Roberts, Dave Robinson, Paul Rosser, Eric Salisbury, Simon Smith, Lee Spenceley, Graham Stockton, Paul Straw, Paul Tisserant, Andrew Turnidge, Ralph Wainwright, Michael Warrick, Carl Watson, Mike Waudby, Martin Willcock, David Williams & Trevor Roots.** We are sorry if anyone has been missed. Photos not credited are by **Trevor Roots**.

## EVENTS

We are finally attempting to put together a new programme for the latter half of 2021 as travel is now allowed throughout the UK and Government restrictions ease with trial mass gatherings being allowed for assessment. As all our events are in England only then the following applies. From the 17<sup>th</sup> May 2021 outside contact up to 30 people should be allowed. If social distancing is scrapped after the 21<sup>st</sup> June along with max numbers allowed to meet, then that makes visits more viable but be aware companies may still be wary about accepting us, it is their decision so we must respect that. We have already had positive responses from the following with suggested day (possible number of visits in brackets), exact dates TBC but costs / numbers should be as per our cancelled 2020 programme:

- Brake van tour of Scunthorpe Sunday (1)
- Peter Briddon, Darley Dale Sunday (1)
- Andrew Goodman, Wishaw Sunday (1)
- FL Crewe Basford Hall (awaiting management approval) Saturday not before August (2)
- WCR Carnforth (awaiting management approval) Saturday (4 mid-month proposed)

We have had responses from Hope Cement Works, which are not starting any visits at the moment and Whatley / Merehead Quarries which as the visit organiser has retired will unfortunately not be accommodating visits anymore. Shame we never got in our planned 2020 visits even if it would have been our last. Just shows you have to take opportunities when they arise as circumstances will always change. As far as our two biggest visits, sadly the lease of Long Marston is changing hands in June and visits may well no longer be possible, but we will see if anything can be arranged with the new lessors. As for Eastleigh Works, at present permission does not look likely for this year.

Once we can firm up dates and arrangements you will be informed so **PLEASE** do not try to reserve a place yet. If anyone who works at a preserved railway can offer us a visit, for which we will pay, particularly behind the scenes and however small a group then please contact Trevor in the first instance. They could be beneficial to the railway bringing in much needed income. We will be planning visits to ELR but not until 2022, as that is the earliest they will take bookings. We will be trying KVV as there is plenty to see at different locations along the line

Please remember when you get offered a vaccination **TAKE IT** (medical exemptions aside), as not only does it give you the best protection and is morally correct to protect others, but it will be the way forward to attend visits. You can choose to exercise your right not to be vaccinated but as a definite higher risk why should that attitude be tolerated by those who have taken the jab and have sacrificed much for a long period of time to stay safe. Some visits may be organised before every adult in the UK has been offered a first vaccination (July) but with our age profile of 94% over the age of 40 then very few will not have been offered a vaccination by the time of our first visit. In fact, with 65% of members over 60 they should have had both jabs by now. As government guidance evolves, we will decide how or if we need members attending visits to provide evidence of virus free status. If a vaccine passport is introduced, then that will be helpful, especially as in Scotland, even though we have had both jabs, we have nothing to show that, unlike in England.

# EASTLEIGH WORKS REPORT

by **Carl Watson** (photos by Carl unless shown otherwise)  
for the period 1<sup>st</sup> to the 31<sup>st</sup> May 2021

## Locos:

- 04/05 66743 came in for windscreen repairs and left the following day.  
05/05 66704 brought in 66794 and 69001 from EMD Longport and returned there with repainted 66798 and 69002.  
06/05 43058 and 43059 arrived from Crewe (LSL) for repainting in Rail Charter Services livery.



- 06/05 43046 t&t 43055 took the Midland Pullman Set to Crewe (LSL). Each of the power cars now has a generator fitted to supply the additional power required for all the onboard equipment, which has resulted in the rear door windows being replaced by louvres (see below).



- 12/05 37099 arrived with test train 96609, 977985, 977986, 9803, 999602, 9708 and worked on and off all week.  
13/05 73963 t&t 73965 arrived with Test Train 977974, 72639, 9481 and work on and off for the rest of the week.

- 13/05 73141 brought in 73119 for new wheels and departed with 73201 and Translator Set T7 (64664, 64707)
- 21/05 Problems with DBSO 9708 on 37099's Test Train meant 37240 was attached to the rear so the formation arrived as 37099, 96609, 977985, 977986, 9803, 999602, 9708, 37240.
- 21/05 Freightliner 66591 and 66572 arrived to test the latest converted FRA wagons and departed later the same day.
- 25/05 37402 arrived from Crewe for route learning duties and did a trip to Bristol and back on 26<sup>th</sup> and returned to Crewe on 27<sup>th</sup>.
- 26/05 66794 was released from the paintshop in BR Trainload Freight livery. One side was fitted with a Construction sector logo for the naming ceremony on 28<sup>th</sup> (see below), after which both sides received Petroleum sector logos.



- 28/05 66794 was named 'Steve Hannam' (see above) after our Locomotive Production Manager to mark his retirement from a career that started at Swindon Works as an Apprentice and then to

Westbury and the Mendips, working for Foster Yeoman and Mendip Rail. Steve was instrumental in bringing the Cl.59s to the UK in the late 1980s.

28/05 66516 and 66585 arrived to test the latest FRA-B conversions and departed later that day.

28/05 Midland Pullman HST set arrived from Crewe in preparation for its Eastleigh to Penzance charter on Saturday 29<sup>th</sup>. It returned to Crewe on Sunday 30<sup>th</sup>.



above reported in the last issue, 57312 + 317669 on 5Q86 Ely Papworth Sdgs – ZG passing 66044 departing Eastleigh on 6M48 Southampton Eastern Docks - Halewood, Eastleigh (10.58) 29<sup>th</sup> April 2021 (Chris Addoo)



57305 + 317663 on 04.58 Ely Papworth Sdgs – Eastleigh Works, Basingstoke (10.15) 6<sup>th</sup> May 2021 (Paul Tisserant)

**OTP:**

13/05 DR73121 departed on completion of its exam

**Units:**

04/05 57305 took 319009 to Brush Loughborough.

06/05 57305 brought in 317663 from Ely for disposal, with barriers 6344, 6346, 977087, 975875 (see above)

13/05 57310 brought in 317662 from Ely for disposal, with barriers 6330, 6340, 977087, 975875 (see overleaf)

20/05 701018 left for Eastleigh Arriva Depot and 701014 came in from there.

21/05 57310 brought in 317722 from Ely for disposal, with barriers 6330, 6340, 977087, 975875 (see overleaf)



57310 + 317722 on 5Q86 Ely Papworth Sdgs - ZG, Winchfield (09.56) 21<sup>st</sup> May 2021 (Derek Everson)  
 note the that two cars are still in the ex-Nat Ex livery (see **STORED STOCK**)  
 57310 + ADB 977087 + 317662 + ADB 975875 + 6340 + 6330 on 5Q86 04.58 Ely Papworth Sdgs -  
 ZG, Hook 13<sup>th</sup> May 2021 (Steve Revill)



### Wagons:

Wagon Trips in/out during the month were:

- 09/05 66150 collected 78243, 78278, 7899 054-2
- 15/05 66538 brought in 97751, 97752, 92614, 92647,
- 24/05 66780 took 643009/010 to Peterborough Maintenance Shed GBRf.
- 26/05 66758 brought in 4647 036-9, 028-6, 007-0, 010-4, 044-3 from East Yard.
- 28/05 The latest batch of four FRA-B conversions were tested (see Locos above) and are ready for collection: 613109 (613001), 613110 (613002), 613111 (613024), 613112 (613027)

### Coaches:

Work continues on preparing the Rail Charter Services HST Mk3 coaches for the Staycation Express. Riviera's Mk1 charter coaches are being prepared for a return to service.

**Underground:** Movement of LUL Stock for this period.

- In: HW207 (11/05), HW202 (12/05), HW218 (19/05) (see below), HW211 (20/05)
- Out: GP925 (05/05), JLE9 (06/05), GP933 (11/05), HW202 (13/05), JLE5 (19/05), GP921 (20/05)



LU HW 218 arriving Eastleigh Works showing how tight it is negotiating Campbell Road bridge (11.40) 19<sup>th</sup> May 2021 (Steve Revill)

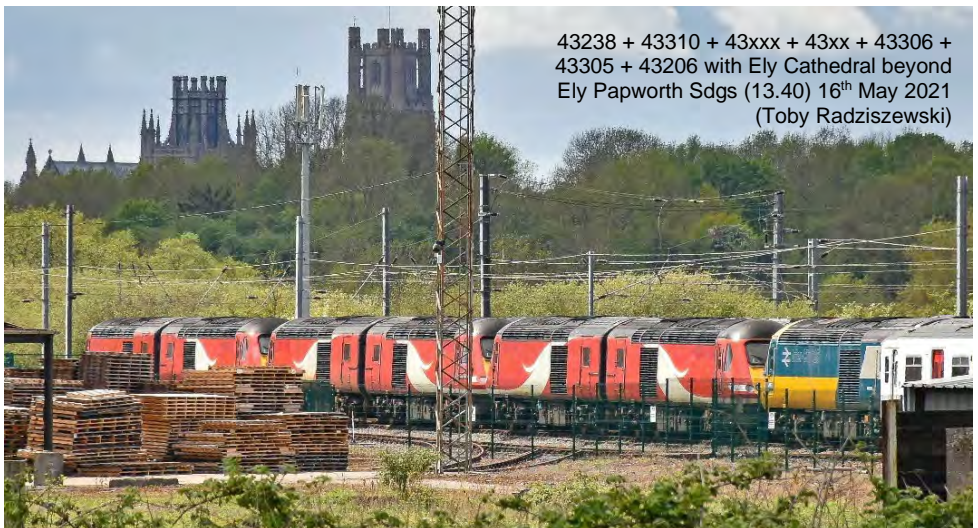
**Scrapping:** Raxstar have disposed of the following during the month:  
 317651/59, 77225/71737 from 317654, HW205/208, Tamper DR 75403 (trailer only)

## STORED STOCK: ELY PAPWORTH SDGS

Following recent lineside clearance, you are now able to walk down further along the compound enabling photographs of more stored stock.



above 317722 stored since 6<sup>th</sup> March 2019 prior to departing to Eastleigh Works, 6<sup>th</sup> May 2021 (Toby Radziszewski)



43238 + 43310 + 43xxx + 43xx + 43306 +  
 43305 + 43206 with Ely Cathedral beyond  
 Ely Papworth Sdgs (13.40) 16<sup>th</sup> May 2021  
 (Toby Radziszewski)

# FRANCHISE / NETWORK NEWS

Just as I sent off the May issue for printing came more bad news on the structural integrity of new stock with the entire fleet of 182 Cl.800-02s stopped for safety checks on the 8<sup>th</sup> May 2021. This was in response to the discovery of serious cracks around the lifting pockets of GWR sets. This affected the four operators using these sets, GWR (93), LNER (65), TPE (19) and Hull Trains (5) who were already inspecting for the earlier problem of cracking around yaw damper brackets on some of the fleet. This problem is associated with Hitachi built stock and welded aluminium so also affected the ScotRail Cl.385s of which 10 were found to have problems. On investigation the fault appears to be stress corrosion affecting the older bi-mode sets which have covered more miles and operate on twisty routes like the GWR Cl.802s west of Exeter and LNER sets in Scotland to Aberdeen and Inverness. Clearly the bi-modes have to carry underfloor engines and fuel tanks so adding to stress on more undulating track. Notwithstanding possible operational factors, the cracks are in the metal rather than the weld attaching the pockets to the body and there is a possibility that the grade of aluminium used by Hitachi is at fault being 7000, known to be prone to cracking, whilst Siemens for instance uses 6000. Whilst the smaller fleets of TPE and HT returned to service almost uninterrupted, LNER took a little longer but were all checked and returned to service pending a programme of repairs. It was GWR who were hardest hit with the oldest fleet with only 3 sets available by the 10<sup>th</sup> May, which was down to one on the 12<sup>th</sup> May. However as stated below redeployment of stock with co-operation amongst Network Rail and other operators allowed GWR to run 87% of its services. Going forward whilst sets may be allowed to safely run in service subject to three inspections per day, many will have to stay stopped until repairs can be affected, which depending on the solution is not likely until the end of 2022. One problem is that there is limited facilities and personnel to undertake aluminium welding in the UK. The knock on effect is that new build Cl.805/807 sets for AWC will probably be delayed until 2023.

Meanwhile the earlier problem of yaw damper bracket cracking on CAF built Cl.195/331s operated by Northern has meant that 24 sets are currently out of use with several sets dumped, minus dampers, in the sidings at Huddersfield to free up depot space. A solution has been identified which involves fitting spreader plates between the yaw dampers and T slots so spreading the load.

Yet more bad news in late May saw Chiltern stop its Cl.68s following the discovery of cracking in the ETS module mountings. This might also affect TPE locos which also are fitted with ETS.

The termination of the last of First Groups franchises, TPE, has been settled at a cost of £6 million with the ERMA extended until the 19<sup>th</sup> September 2021.

With all the problems associated with new stock it sobering to record that 308 vehicles have been scrapped in first 4 months at Sims Metals, Newport Docks alone. Just three ex-GA Mk3s awaiting disposal, 11088/12116/12146

**Crossrail:** Testing on the central section started on the 10<sup>th</sup> May 2021 with four trains an hour which will steadily build up to the service frequency of 24 trains per hour.



above the new Kettering Stabling Sidings showing interim ex-GA blue liveries on 360110 (prior to receiving EMR CONNECT) & 360111 (with white stripe as left GA) 2<sup>nd</sup> May 2021 (Colin Pottle)

**EMR:** The CI.360 electric service, with 'EMR CONNECT' branding, quietly started on the 9<sup>th</sup> May 2021 with shuttles between Corby and Kettering. The full service to London St Pancras kicked in with the timetable change on the 17<sup>th</sup> May 2021. So far two sets have received the purple livery.



above 360111 on 5Q45 10.36 Kettering Stabling Sdgs - Kettering Stabling Sdgs, Milton Ernest (10.59)  
14<sup>th</sup> May 2021 (Toby Radziszewski)

below purple liveried 360102 + 360112 1Y23 St. Pancras - Corby at Kettering (12.44) 18<sup>th</sup> May 2021  
(Colin Pottle)



43272 t&t 43309 on 1D63 18.34 St Pancras Int - Leeds,  
East Midlands Parkway (19.56) 15<sup>th</sup> May 2021  
(Toby Radziszewski)





above 43274 t&t 43102 on 1M17 10.21 St Pancras - Leicester and return via Corby EMR charity farewell tour, Wellingborough (11.00) 13<sup>th</sup> May 2021 (Steve Milsom-Payne)



43251 t&t 43257 Syston (12.22)  
11<sup>th</sup> May 2021 (Mike Brook)



43102 t&t 43274 carrying a headboard  
'THE LAST HST FROM LONDON 1976-  
2021' on 1F70 20.02 London St Pancras  
Int - Leeds, Leicester (21.09)  
15<sup>th</sup> May 2021 (Toby Radziszewski)

HSTs bowed out of service prior to the May timetable change with a special hastily organised charity run by the BLS and 125 Group between London St Pancras and Leicester featuring celebrity 43102 t&t

43274 on the 13<sup>th</sup> May 2021. The final service utilised the same set on the 15<sup>th</sup> May 2021. 43102 t&t 43272 + 6 Mk3s moved to Nemesis Rail on the 19<sup>th</sup> May 2021 where 43102 was detached for preparation prior to departing by road on the 25<sup>th</sup> May 2021 to NRM, Shildon and into preservation. Meanwhile some of the other remaining sets quietly headed for storage at Ely Papworth Sidings, 43238 t&t 43310 + NL56 on the 10<sup>th</sup>, 43309 t&t 43295 + 4 Mk3s on the 17<sup>th</sup> and 43320 on the 19<sup>th</sup> May 2021 (see **STOCK MOVES**). This just leaves the final destination of 43251/257/274 to be resolved.

**East Coast Trains (ECT):** The first daytime running of 803002 for open access operator ECT ran on the 1<sup>st</sup> June 2021 as 5Q63 from King's Cross - Darlington. as seen making use of the 125mph speed limit 5 miles north of York at 16.21 by David Rice.



*above* the penultimate day and last weekday 365522 + 365520 + 365502 on 1P52 18.12 London King's Cross - Peterborough, Langford (18.45) 14<sup>th</sup> May 2021 (Toby Radziszewski)  
*below* heading for store 365520 + 365522 on 5P65 10.48 London King's Cross - Peterborough Nene Carriage Sdgs, Huntingdon (11.45) 15<sup>th</sup> May 2021 (Toby Radziszewski)



**GN:** CI.365s bowed out of service on the 15<sup>th</sup> May 2021 with 365502 + 365522 + 365520 on 1P52 King's Cross - Peterborough returning south as 365522 + 365520 as 1P85 before returning to Peterborough as ecs (see above).

**Grand Union Trains (GUT):** Having had their first open access bid rejected, GUT has made a revised bid to operate between London and South Wales with a reduced service frequency to mitigate the impact on existing TOCs on the route.

**GWR:** With all Cl.80xs side-lined for safety checks from the 8<sup>th</sup> May 2021 for most of the following week, GWR used Cl.387 EMUs in 12 car formations hourly between Swindon & London Paddington. Cl.165/166 DMUs were operating hourly between Reading and Newport and XC came to the rescue with a Voyager and HST set covering Bristol Temple Meads - Swindon in the form of all day shuttles. This saw the rare event of a XC service stopping at Chippenham (see below). 220015 was on a Paignton to Swindon diagram in the morning then shuttled from Bristol to Swindon during the day with the HST set. Three Cl.387s have also been hired in 387301/02/06 from c2c which have been used on Reading – Newbury shuttles.



*above* 220015 on 1Z19 to  
Bristol TM, Swindon (12.39)  
10<sup>th</sup> May 2021  
(Colin Pidgeon)

*right* 43239 t&t 43207  
Chippenham, 10<sup>th</sup> May 2021  
(Keith Blackman)

*below* 43303 t&t 43239  
on 1Z17 to Bristol TM,  
Swindon  
(11.18) 12<sup>th</sup> May 2021  
(Colin Pidgeon)





220011 on 1Z1  
to Bristol TM, Swindon (11.29)  
14<sup>th</sup> May 2021, the last day of XC substitutions  
with 43304 t&t 43378 also operating (Colin Pidgeon)



above 166215 on 1B07 Reading - Newport, arriving 40 mins down on Cl.800 timings, Swindon (10.14)  
below 387161 + 387169 + 387147 on 1A58 Swindon - Paddington, Swindon (13.40)  
both 12<sup>th</sup> May 2021 (Colin Pidgeon)



387301 on  
Reading - Newbury shuttle,  
Southcote Jct 14<sup>th</sup> May 2021 (Steve Revill)



*above left* 387306 , Reading  
(09.53) 24<sup>th</sup> May 2021  
(Spencer Conquest)

*above right* 387302 Reading  
(14.54) 19<sup>th</sup> May 2021  
(John Goodyer)

*right* 37688 + 9497, 41117, 44047,  
42100, 42220, 41063 on 5Z37 LSL  
Crewe - Laira, Ashchurch (15.37)  
10<sup>th</sup> May 2021 (Terry Lea)



Five ex-EMR HST Mk3s were also sent south to Laira (see right) on loan from LSL to insert into Castle HST sets. However they were never used and collected on the 27<sup>th</sup> May 2021.

GWR have now added a diagram for CI.387s to work west of Swindon to Bristol Parkway in

passenger service for the first time to help out with the continuing shortage of IETs. The units return from Bristol Parkway empty, sit at Swindon for 14 minutes before returning to Bristol Parkway.

*above* 387165 + 387152 on the first to run in  
passenger service west of Swindon on  
9U54 London Paddington - Bristol Parkway,  
Swindon (14.30) 24<sup>th</sup> May 2021  
(Colin Pidgeon)

*right* 800025 'Captain Tom 100' challenge  
branding (Spencer Conquest)

To commemorate what would have been Captain Sir Tom Moore's 101<sup>st</sup> birthday, GWR 800025 completed a journey of 100 station stops in just over 40 hours starting at London Paddington at 06.37 on the 30<sup>th</sup> April 2021. This was part of a wider fund raising initiative.





Prior to finally entering service Cl.769s have been doing shake down runs as seen below.

*right* 769943 without branding on Reading Depot - Reading Depot test via Didcot & Maidenhead, Twyford (13.09) 10<sup>th</sup> May 2021 (Derek Everson)



*below* 769930 similarly yet to receive branding on 5Q10 Reading Depot - Reading Depot, Swindon (10.13) 26<sup>th</sup> May 2021 (Colin Pidgeon)



The final refurbished Castle HST set was delivered to Laira on the 5<sup>th</sup> May 2021 with 48146-48/49116 making up GW16.

**LNER:** With some Azumas out of action whilst safety checks were carried out a couple of Cl.91 + Mk4 sets were rushed back into service with 91110 first to return on the 11<sup>th</sup> May followed by 91111 conducting test runs on the 12<sup>th</sup> May though it required turning before entering service. In the end it was the 23<sup>rd</sup> May 2021 before it started services when a second diagram was added. A steady stream of Cl.91s have since been reactivated conducting test runs or turning manoeuvres:

- 11/05 91110/11 in service
- 14/05 91106 in service
- 14/05 91119 Doncaster Belmont via Newcastle - NL turning move
- 18/05 91130 NL – NL via Newcastle turning move
- 21/05 91105 Doncaster Belmont via Newcastle - NL turning move
- 26/05 91101 NL – Peterborough – NL
- 28/05 91124 dragged to NL from Doncaster Belmont



*above* 91110 t&t DVT 82223 (set NL26) on 16.33 King's Cross - Grantham, Stevenage (16.54)  
14<sup>th</sup> May 2021 (Simon Smith)

*below* 91101 t&t DVT 82214 (set NL15) on 5Z50 Peterborough - NL, York, 27<sup>th</sup> May 2021 (David Rice)



Following the demise of 91132 the next four to head to Sims Metals, Newport Docks from Doncaster Belmont on the 10<sup>th</sup> May 2021 were 91102/13/26/29 (see below and opposite top) and all have since been scrapped.



*above* 57305 + 91129 + 91113 + 91126 + 91102 Hitchin (11.05) (Simon Smith)



above 57305 + 91129 + 91113 + 91126 + 91102, Peterborough (10.23) (Keith Partlow)  
note 91102 & 91126 are still carrying their nameplates

Meanwhile two Cl.91s still languish in Doncaster West Yard having been cannibalised for spares.

below 91103, left 91108 with weeds growing on the top of the bufferbeam, 22<sup>nd</sup> May 2021 (Neil Dix)



**NO:** Eight Cl.153s have been placed in store at Heaton Depot having moved north in two convoys, 153378 + 153315 + 153304 + 153317 from Neville Hill on the 18<sup>th</sup> May 2021 and 153316 + 153301 + 153352 + 153351 from Holbeck on the 19<sup>th</sup> May 2021, the latter seen below at Beningbrough at 12.53 by David Rice





the two rakes of Cl.153s  
+ lone 142071 Heaton Depot  
23<sup>rd</sup> May 2021 (Tony Falloon)

Cl.769s entered service with the May timetable change on the 17<sup>th</sup> May 2021 with 769424/28/21/34/48 all available.

All the four reformed Cl.150s entered service on the 16<sup>th</sup> May 2021 between Manchester Victoria and Clitheroe via Bolton.

**ScotRail:** A further four refurbished Mk3 coaches, 42054/077/154/185, were delivered to Slateford Yard on the 1<sup>st</sup> May, which are due to be inserted into the Inter7City HST sets 2021 to make five coach sets

**SWR:** With Cl.701s heading north from Eastleigh Depot to Widnes for rectification work they will not now enter service until autumn 2021. As Cl.47s are fitted with the correct coupling, barrier vehicles are no longer needed.



47749 + 701007 on  
5Q80 Eastleigh Depot - Widnes,  
Shawford (10.02) 13<sup>th</sup> May 2021 (Chris Addoo)



47739 + 701008 Northampton,  
26<sup>th</sup> May 2021 (Graham Stockton)

**TfW:** 197002 moved from storage at Castle Donnington to Crewe on the 8<sup>th</sup> May 2021.



left DVT 82216 t&t 67010 on driver training (with 56090 & 57307 behind) on Holyhead - Crewe, Crewe (13.42) 14<sup>th</sup> May 2021 (Spencer Conquest)

TfW have acquired the four sets of Mk4 coaches from Eversholt Rail as refurbished for the aborted GC Blackpool – London Euston service plus additional vehicles as spares. The Holyhead – Cardiff Mk4 sets have also been bought from Eversholt following their lease during testing. The full TfW Mk4 allocation is (45): 10301/05/12/18/21/25/28/30, 11319-25, 12210/11/15/17/19/22/24/25, 12304/10/15/16/23/24/26, 12434/46/47/52/54/61/77  
DVTs 82200/01/16/20/26/27/29/30

769426 have returned to Brush, Loughborough where the original repaired 77340 will be added. The temporary use of 77485 ended with it returned to store at Long Marston.

**WMT:** 196005 has started test running on the North Warwickshire line.

**Ed Murray:** Eleven Cl.08s have been acquired, 08401/445/472/571/596/615/669/724/823/873

**FL:** So far in 2021 ten FL Cl.90s have been sent across the Pennines to Leeds Midland Road for tyre turning, as follows:

Date	Locos	Hauled by	Returned
04/01	90012/16/48	66610 t&t 66620	07/01 66587 t&t 66546
12/02	90009/14	66951	22/02 66513
02/03	90047	66533	08/03 66508 + 66520
07/05	90010	66548	17/05 66557
17/05	90013/49	66557	23/05 66553
23/05	90003	70020 + 70014	27/05 66554 + 66531



above 66606 + 90049 + 90013 + 66553 returning from tyre turning on 6M90 11.22 Hunslet Yard - Crewe, Hebden Bridge (12.30) 23<sup>rd</sup> May 2021 (Harold Hull)

**DBC:** Another Cl.66 has received promotional branding proclaiming its green credentials by being converted to run on vegetable oil (see below with a photo of the first 66150 reported on p43 in the Jan / Feb 2021 issue).



66077 with 'Powered by HV' branding on Wakefield – Felixstowe Dock (south), Ely (12.43) 11<sup>th</sup> May 2021 (Michael Warrick)



66150 with 'We are the future' branding on 6Z32 Wembley Yard - Tytherington Quarry, Swindon (14.50) 28<sup>th</sup> May 2021 (Colin Pidgeon)

**Network Rail:** 43013 has returned to service with 43062 now stopped for its heavy exam.

Two more unused DVTs, 82124/26, have moved into storage at Long Marston on the 11<sup>th</sup> May.

The second Cl.43 HST power car 43290 has finally been employed on the NMT with 43299, making its debut on the 16<sup>th</sup> May 2021.



above 43290 t&t 43299 + 977995, 977994, 977993, 975814, 977984 on 1Q27 10.12 Heaton - Cambridge Sdgs North, Peterborough (13.51) 17<sup>th</sup> May 2021 (Toby Radziszewski)

**DRS:** As part of the launch of Nuclear Transport Services, of which DRS is a part, a new corporate identity has been unveiled which will eventually appear on rolling stock. The most likely interim livery change will be replacing the cabside branding.

*right* un-numbered 08870 being shunted off the low loader by 08588 (Steve Boulton)



**ERS:** Freshly painted in Intercity livery, 08870 and ex-Nightstar Mk3 Generator 96374 arrived at Gt Yarmouth Vauxhall Sidings on the 14<sup>th</sup> May 2021. 96374 left site in February to have major bodywork and internal repairs done. Following purchase from RMS last year, 08870 also had major repair works carried out prior to the repaint but there is still work to be completed before it can be used as the resident shunter.

96374 hooked up to the ex-CS MK3 sleepers (Steve Boulton)



the other side of 96374 (Steve Boulton)



ERS have acquired four ex-GA Mk3 coaches, 12017/36/43/94

**LSL:** Driver training over the Settle & Carlisle line was conducted between the 10-14<sup>th</sup> May 2021 using the HST Midland Pullman.

43047/49 have been added to the LSL fleet moving by road from Nemesis Rail on the 26<sup>th</sup> and 27<sup>th</sup> May 2021 respectively.

**PNP Events:** PNP provide Polar Express services to a number of heritage railways. One ex-CS sleeper, 10680 and seven ex-GA, 12061/079/090/137/146/164/167, Mk3 coaches have been acquired for Polar Express operations. In addition, Mk2 5446 has been acquired from MNR which will be cosmetically restored to be used in their warehouse at Halesfield, Telford as a rehearsal space to train actors in the confines of a coach.

**Eurostar:** A funding package of £250 million was finally agreed to secure the future of Eurostar, though no money has been provided by the UK government even though they have supported the more harmful competitive airline industry !!



## RETRO PHOTO SPOT: INDUSTRIAL DIESEL LOCOS

Sentinel 0-4-0DHs  
assumed both scrapped  
but no info

*left 62 [228V] below 63 [227V]*

Stanton Iron Works,  
27<sup>th</sup> January 1982  
(Martin Hall)



# PHOTO SPOT: NR TEST TRAINS



*above* 43062 t&t 43299 on 1Q13 11.14 Heaton - York via Carlisle & Leeds, Heaton (10.28) 12<sup>th</sup> April 2021 (Tony Falloon)

*left* 67027 t&t 67023 on 1Q50 13.40 RTC Derby - Doncaster West Yard, Wollaton Summit (Nottingham) 22<sup>nd</sup> May 2021 (Paul Straw)

*below* 37240 t&t 37254 on Cardiff Central - Derby RTC, Worcestershire Parkway (09.19) 6<sup>th</sup> May 2021 (Sean Davies)





*above* 73962 t&t 73963 on 1Q53 Tonbridge Yard - Southampton Up Yard, Southampton Airport (11.58) 14<sup>th</sup> May 2021 (Chris Addoo)



*left* 37175 on 0Z34 York North Yard - RTC Derby route learner, end of Monk Breton branch 21.05.21 (Tony Falloon)

*below* DBSO 9708 t&t 37099 + 999602, 9803, 977985, 977986, 96609 on Reading Triangle - Cardiff Canton,



*above* 37116 t&t DBSO 9702 + 99604, 6262, 9810, 999606 having arrived on 3Q91 from RTC Derby on the 23<sup>rd</sup> awaiting departure on 3Q10 21.29 to Hither Green & 37612 t&t 37254 on 1Q90 15.15 Derby RTC - Welwyn GC, Ely (19.05) 24<sup>th</sup> May 2021 (Toby Radziszewski)

*inset* 43062 t&t 43299 on 1Z48 calibration tests with both power cars manned, Old Dalby (20.31) 12<sup>th</sup> May 2021 (Tony Falloon)



37421 t&t 37175 on 1Q15 Derby RTC - Landore TMD, Kemble (14.05) 11<sup>th</sup> May 2021 (Lorraine Hopkins)

*inset* 37219 t&t 37116 on 19.36 Inverness - Inverness, via Aberdeen, Forres (20.21) 15<sup>th</sup> May 2021 (Alan Jones)



37421 + 975025 'CAROLINE' Worcester Shrub Hill (13.08) 24<sup>th</sup> May 2021 (Sean Davies)



*left* 37099 on Heaton -  
Slateford Yard, Newcastle  
(23.22) 25<sup>th</sup> May 2021  
(Tony Falloon)

*right* 37612 t&t 37254 on  
1Q99 16.40 Cambridge  
Reception Sdgs - March  
Down, Waterbeach (16.49)  
28<sup>th</sup> May 2021  
(Toby Radziszewski)



*left*  
73212 t&t 73962 +  
6263, 977974,  
72639, 9481 on 1Q67  
17.44 Woking Up Yard  
Reception - Tonbridge  
West Yard, Clapham  
Junct (19.05)  
28<sup>th</sup> May 2021  
(Toby Radziszewski)

## ACCIDENTS

On the 24<sup>th</sup> May 2021, 801212 on the 05.26 1E03 LNER Stirling – London King's Cross struck cows at approx 08.30 between Durham and Darlington coming to a stop on Croxdale viaduct. Damage was caused to the nose and coupling of 801212 Heading northbound, 800103 on 1W02 King's Cross - Aberdeen also encountered debris but was cleared to continue on to its destination. To assist recovery, 66531 was sent as 1Z99 from Tyne Yard, the intention being to drag the stricken unit north with the remaining working coupling. By late afternoon the Azuma had still not moved, with all traffic that hadn't been cancelled short of destination taking turns to use the down line. Southbound workings utilised the crossovers at Durham and Tursdale Jct. Eventually 66531 was sent back to Tyne Yard and 801212 made its way to Durham up loop under its own power.



above 66531 + 801212 on  
Croxdale Viaduct (18.56)

right 801229 snaking across  
the crossovers north of Durham  
at 18.15 from the up fast to the  
down slow to run into platform  
2, working 1E20 Edinburgh -  
King's Cross it will run wrong  
line as far as Tursdale Jct

both 24<sup>th</sup> May 2021  
(David Robinson)



## PRESERVATION PHOTO SPOT: STEAM



# TRAFFIC & TRACTION NEWS

**May 4**

801224 & 801215 inside Heaton Depot (Doug Stafford)



**May 5**

70020 passed Walsall at 14.05 on 638J Earles Sidings – Walsall FT (Geoff Bowater)



**May 6**

73962 in the Manchester Piccadilly holding siding during driver training (Harold Hull)



**May 7**

One of the ex-Gatwick Express CI.378/2s operating with GN, 378203 + 387115 passed

Littleington LX, Royston at 13.59 on 12.52 London King's Cross - Royston, (Simon Smith)



**May 10**

66162 passed Beach Station LX at 14.00 on Wakefield - Felixstowe Dock (south) (Michael Warrick)



**May 11**

60074 awaiting its turn to operate the Swindon Stores – Toton diagram, Swindon (13.38) (Spencer Conquest)



56049 was seen at Crewe at 13.44 on Crewe Basford Hall - Pinnox Esso Sdgs (Roy Hitchin)



**May 14**

37688 + 5366 + 41162 passed Weston upon Trent on the freight only Stenson Jct to Sheet Stores Jct line on Crewe - Toton for tyre turning (Paul Straw)



**May 17**

43145 t&t 43142 + HA25 descending Slochd at 11.42 on 08.35 1H07 Edinburgh – Inverness (Alan Jones)



**May 18**

66522 passed Swindon at 11.21 on 7A60 Whatley Quarry - Oxford Banbury Road (Colin Pidgeon)



56096 was seen passing Stafford at 11.04 (Sean Davies)



150221 was seen arriving at St Erth at 13.22 on Penzance - Plymouth (Spencer Conquest)



**May 22**

60066 passed Dringhouses at 09.45 on 6N31 07.47 Scunthorpe - Lackenby (Mike Brook)



**May 24**

57604 t&t 57306 were seen at Reading at 10.04 moving the overnight sleeper stock onto Reading Depot (Spencer Conquest)



**May 25**

37402 passed Oxford at 12.29 on 0Z10 Crewe – Eastleigh for driver training (Spencer Conquest)



**May 26**

90012 + 90011 passed Ingatestone at 10.07 on Trafford Park - Felixstowe North (Colin James)



**May 27**

92043 passed Spittal, Berwick-upon-Tweed at 12.38 on 0Z93 Newcastle - Dunbar route learner (Gareth Patterson)



**May 28**

66618 passed Mill Hill Broadway at 12.11 on 05.22 Tunstead - West Thurrock (Eric Salisbury)



**News from Norfolk (Stuart Moore):**

On the 5<sup>th</sup> May 37423 was in Norwich Yard along with 37421 t&t DBSO 9714 operating the twice yearly infrastructure test train to Cromer and various other points in the region. This means that since the start of the year the following CI.37/4s have all been present in Norwich yard, 37402/07/21-25. On the 12<sup>th</sup> May 66767 powered the 6P41 Harwich - North Walsham empty tanks. An interesting move took place on the 14<sup>th</sup> May when two stoneblowers DR 80301 and DR 80303 ran from Tring CE sidings to Wymondham via platform 2 at Norwich station. The two CE units were seen sat in Norwich station waiting to proceed to Wymondham. They were to be used on a track possession in the Cromer area on the 16<sup>th</sup>. Also seen on the 14<sup>th</sup> were 37423 and 57002.

Along with the above mentioned engineering works the line from Norwich to Great Yarmouth and Lowestoft was blocked west of Brundall. As a result, bus replacements ran all day but unusually a 'shuttle' was in operation between Brundall and Lowestoft. 755331 was seen arriving at Brundall with the mid-afternoon Lowestoft to Brundall before running back to Lowestoft at 17.12. The redesign undertaken a few years ago at Brundall as part of the re-signalling has meant that it is possible to run these services from the bi-directional Norwich bound



08870 (with number applied) Gt Yarmouth Vauxhall Sdgs, 21<sup>st</sup> May (Stuart Moore)

A trip into Norwich on the 21<sup>st</sup> May produced 37601, 37423 and 57002 all in the yard. A trip later in the day to ERS, Gt. Yarmouth Carriage Sdgs produced 37452, 08588, 08870 and generator 96374. 08870 and 96374 had recently arrived now sporting InterCity livery and looked very smart indeed. I don't know the last time there were two Cl.08's at Yarmouth.

On the 26<sup>th</sup> May 37424/25 and 57305 were in Norwich Yard. The latter had arrived from Ely Papworth Sidings for a couple of days before an early morning run to Clacton with redundant Cl.321s to Gascoigne Wood Yard.

Over 29-30<sup>th</sup> May, track replacement took place on the inter-regional lines out of Norwich. Services to the coast were still in operation but EMR and GA London and Cambridge services were replaced with buses. On Saturday 29<sup>th</sup> May 66708 was seen in platform 2 at the head of a mixed set of wagons, 66790 was seen on spent ballast on the station approach and 66715 was seen waiting entry into

the possession at Trowse. On Sunday 30<sup>th</sup> May, 66781 t&t 66785 leading was seen on a further engineer's train departing Norwich station with for Whitemoor Yard.



66781 Norwich 30<sup>th</sup> May 2021 (Stuart Moore)

Finally, on the 31<sup>st</sup> May 37219 t&t 37421 operated 1Q08 Ipswich – RTC Derby via Sheringham passing Salhouse 55 minutes late en route to Cromer.



57305 + snowploughs ADB 965208/219 Norwich Yard  
26<sup>th</sup> May 2021 (Stuart Moore)



60029 sunlit against dramatic skies on  
0265 14.54 Kings Lynn - Ely Reception  
driver training, Ely (15.40) 18<sup>th</sup> May 2021  
(Toby Radziszewski)



37601 & 37424 + 37425  
Norwich Yard, 22<sup>nd</sup> May 2021 (Stuart Moore)



60020 on Theale - Margam, Tilehurst  
(13.08) 15<sup>th</sup> May 2021 (Spencer Conquest)



66744 + 66725 + 66747 + 66737 + 66711 on 0880 13.47 Peterborough  
- Doncaster Royal Mail Terminal, Eaton Lane LX (15.40) 2<sup>nd</sup> May 2021  
(Mike Brook)



66789 on 6Y48 Eastleigh  
East Yard - Hoo Jnct Up Yard,  
Shawford (09.08) 19<sup>th</sup> May 2021 (Chris Addoo)

60019 + failed 60020 with an oil leak on  
6B13 Robetson - Westerleigh, Gloucester,  
24<sup>th</sup> May 2021  
(Nigel Hoskins)



317337 + 317343 on 5F96  
10.40 Ilford EMUD – Witham  
test run, Ingatestone (11.11)  
26<sup>th</sup> May 2021 (Colin James)

88005 Balshaw Lane, Euxton, on  
4M27 05.46 Mossend Down Yard  
- Daventry (09.30)  
18<sup>th</sup> May 2021  
(Mike Brook)





37423 t&t 57002 on 6P02 09.00  
Wymondham - Whitemoor Yard, Ely West Jct  
(10.57) 16<sup>th</sup> May 2021 (Toby Radziszewski)



57605 Long Rock Depot,  
Penzance (14.46) 18<sup>th</sup> May 2021 (Spencer Conquest)



Hull Trains 802305, still unbranded, was seen  
at Doncaster 27<sup>th</sup> May 2021 (Paul Rosser)



66304 on Kilwinning - Carlisle passing Annan  
signal box (12.04) 9<sup>th</sup> May 2021 (Michael Green)



above two Cl.90s sporting former liveries 90034 (DRS) + 90020 (GC) Crewe (13.55)  
14<sup>th</sup> May 2021 (Spencer Conquest)



73968 & 92038 Edinburgh Waverley  
(07.49) 10<sup>th</sup> May 2021 (Iain Gardiner)



56113 on Crewe Basford Hall - Pinnox Esso  
Sdgs, Crewe 7<sup>th</sup> May 2021 (Andrew Turnidge)



37688 on 0Z40 09.29  
Crewe – Laira to pick up  
LSL Mk3s, Parsons  
Tunnel, Teignmouth  
26<sup>th</sup> May 2021  
(Adrian Roberts)



above an unusual stock move with 67024 + 67021 hauling DR 76901  
 on 6Q88 Dollands Moor - Swindon, Tilehurst East Jct (13.48) 18<sup>th</sup> May 2021 (Steve Revill)  
 note the repositioned smaller revised British Belmond branding on the Cl.67s



66414 t&t 66418 on a long rake of  
 HOBC wagons from Harpenden Jct – Stapleford  
 SCCE Siding, Isham (10.31) 2<sup>nd</sup> May 2021 (Colin Pottle)



345070 the last in the class  
 on service from Paddington,  
 Reading 13<sup>th</sup> May 2021 (Graham Stockton)



66765 on 4L02 03.50 Hams  
 Hall - Felixstowe South, Bury  
 St Edmunds (10.08) 27<sup>th</sup> May 2021 (Colin James)

# PRESERVATION NEWS

**Dean Forest Rly (DFR):** Following the completion of winter maintenance and a successful test run on the 11<sup>th</sup> May, Cl.108 DMU 51914 + 56492 re-entered service on the 19<sup>th</sup> May.

Tamper DR 73121 arrived on the 24<sup>th</sup> May for a week's training of Network Rail staff. Another arrival on 27<sup>th</sup> May was 1943 built Hunslet Austerity 0-6-0ST WD 75008 [2857] 'SWIFTSURE' from MNR which will be used as cover for out of service Austerity 0-6-0ST WD 152 'RENNES' and to replace 0-6-0ST 18 [1873] 'JESSIE' which will be returning to EMB at the end of June.



*above* DR 73121 & 56492 + 51914 Parkend, DFR 26<sup>th</sup> May 2021 (Alan Pace)  
*below* 0-6-0ST WD 75008 [2857] 'SWIFTSURE' Norchard, DFR 31<sup>st</sup> May 2021 (Nigel Benning)



**Llangollen Rly (LLR):** Having completed a deal to purchase assets and the right to operate on the railway the LLR Trust was able to purchase various items at the auction of the LLR plc assets on the 12<sup>th</sup> May 2021, which raised £486,200. However illustrating the problem of auctions with stock going

to the highest bidder, rather than someone who actually wants it, the working 50t Cowans Sheldon crane ADRC 96718 was bought by Sandbach Dismantlers and could have so easily been cut up but is to be bought over an extended period by LLR. CI.11 lookalike EE 0-6-0 [1901] was also bought for scrap but quickly sold to BAT arriving at Shackerstone on the 24<sup>th</sup> May 2021. MNR bought Mk1 4702 whilst EOR bought 4947. Another three Mk1s were sold for holiday accommodation whilst 1864 went to Tunbridge Wells, SPA prior to auction. It would have been a tragedy to have lost what is one of the most scenic preserved lines in the UK but thankfully LLR hope to re-open in late July, early August so go support them....and others.

The mainline operation of unique CI.89 89001 has been further set back as further repairs are needed, following faults developing in two of its traction motors during OHL testing at Soho.

**Misc News:** The HST set owned by the 125 Group, 43048 t&t 43089 + Mk3s TGS 44000, TS 42111/119/337, TF 41057/67, TRFB 40730/41 (not in order), was hauled to MRB on the 24<sup>th</sup> May 2021 by 20227 + 20205.

0-6-0ST [1378] 'MARGARET' has finally been given a protective cover at Scolton Manor.

Manning Wardle 0-4-0ST 14 [1795] 'E.B.WILSON' built 1912 has been offered for sale from its long time restoration base inside Barrow Hill Roundhouse. This is the only standard gauge 0-4-0ST loco from this manufacturer left in the UK though there are 15 0-6-0STs.



above [1795] BH 10<sup>th</sup> June 2018

With stock from the defunct Dartmoor Railway transferring away to other locations, three coaches have been sent for scrap, Mk2 BSO 9501 and Mk3 sleepers 10595/611. Before closure, 10595 was at Meldon Quarry whilst the other two were in the bay platform at Okehampton.

# STOCK MOVES

Many of the numerous moves occurring over the last month are shown below with others under **FRANCHISE / NETWORK NEWS**.





above 47772 + 47802 on 5M43  
Southall - Carnforth, Easehall  
(13.09) 6<sup>th</sup> May 2021 (Colin Pottle)

right 43309 t&t 43295 + 44061,  
40750, 42146, 42238 on 5L47  
10.40 Neville Hill - Ely Papworth  
Sdgs, March 17<sup>th</sup> May 2021  
(Keith Partlow)



left 57305 + 321439 + 321443 on 09.58  
Clacton - Gascoigne Wood, Harringay  
Green Lanes (11.25)  
13<sup>th</sup> May 2021 (Eric Salisbury)



37884 + 345042 on 15.17  
Ilford - Old Oak Common, Stratford.  
19<sup>th</sup> May 2021 (Lee Spenceley)



66783 + 73212 t&t 73212 + 442402  
 + 442420 on 5Q81 Eastleigh East Yard -  
 Wolverton, St Cross (05.40) 28<sup>th</sup> May 2021 (Chris Addoo)



## COACHING MATTERS

*left at last* a stored coach from  
 Carnforth I can illustrate, though its  
 escape is only brief as it is destined  
 for scrap, former RU 1929 Wishaw  
 27<sup>th</sup> May 2021 (Colin Pottle)

## GONE BUT NOT FORGOTTEN

Whereas 41001 is still extant from the  
 two prototype HSTs built in 1972 by  
 BREL, 41002 (43001) was scrapped  
 at CF Booth 12/90 having transferred  
 to departmental service in 11/79 for  
 APT trials then withdrawn in 03/82



HST prototype  
 ADB 975813 (43001,41002)  
 stored awaiting its ultimate fate  
 BREL Derby 11<sup>th</sup> July 1985 (Martin Hall)

# SHUNTER SPOT



*above* RSS Owned  
08752 Crewe Arriva  
7<sup>th</sup> May 2021  
(Andrew Turnidge)



*left* RMS owned  
08648 Inverness  
(21.01) 25<sup>th</sup> May 2021  
(Doug Stafford)

*below* GWR owned  
08645 Long Rock  
Depot, Penzance  
(14.44) 18<sup>th</sup> May 2021  
(Spencer Conquest)



# OUT & ABOUT

by James Holloway

*For clarity, steam locos are now shown in red. To be more helpful for those interested in where stock was exactly, can I ask all contributors who list trip sightings over long distances, to please add all locations when submitting to James. Please also ensure your sightings reach James a few days before the press deadline, see **SOCIETY NOTICE BOARD**...ed*

## James McPhail:

8<sup>th</sup> May Edinburgh Waverley: 43028, 43130/37/43/83  
158701/03/19/26/28/30/31/38, 170395, 170401/02/09/10  
170413/51/52, 220016, 221108/09/32, 334005/09/11/40  
380110, 385008/11/12/14/16/23/26-28/35/38/39/41/43/46  
385103-05/09/11/14-17/19/21, 800101, 801201/06/08/21

## Dennis Dey:

28<sup>th</sup> April Crawley Yard: 66125  
Liverpool Street 10.10-10.20: 345013/22, 720537/47/53  
745007  
Ilford: 08700, 08871, 345031, 720543/52  
Stratford: 59102, 66504/08/66/87/91, 66736/44, 70006  
90003/06/14/42, 321901-03, 322481/83-85, 345003/05/06  
345009/11/12/14-16/38/56/64, 720515/22/37/38/47/48/51  
720553/56/58/62-64, 745005/09, 745108/10, 755409  
30<sup>th</sup> April: Barking: 66426, 66587, 710267  
Crawley Yard: 66957

## Ralph Wainwright:

29<sup>th</sup> April Wakefield Westgate 06.45-07.23: 43272  
43309, 150205, 158791, 158905/10, 220010/26, 331101  
331102  
Sheffield 07.51-09.00 & 21.30: 70006, 150119/34/47/49  
150206/69/77, 158791/97, 158812/56/69, 158905/07  
170456/74, 185116/19/42, 195002, 220013/19, 221120/21  
221130, 222004/06/08  
Derby 09.30-09.42 & 18.26-20.55: 08663, 37198, 37605  
57312, 73951, 153319, 158799, 158858, 170102/06  
170397, 170417/20, 170618/21/38, 220009/15/24/28/31  
221124/33/39, 222001/14, 222102, 701029, DVT's 82124  
82129  
Stoke on Trent 10.33-11.08 & 17.33: 156922, 158799  
158858, 220008/29/30, 221131, 323225, 390104/52  
Stafford 11.24-17.00: 43062, 43299, 66044/47, 66142  
66431, 66526/39/66/87, 66616, 66715/32/63, 88007/08  
90014/43, 220006/08/13/16-18/20/22/29/30/32, 221101/02  
221105/07/13/15/16/18/19/22/23/31/41, 325008, 350107  
350110/13/14/19/22/23/27/55, 350231-33/35/36/38-40/42  
350243/48/52-54/58/61/63/64/66, 350371/75, 390011/13  
390016/39/45-47, 390103/04/15/17-19/23/24/27/30/31/34  
390138. DR73922/30  
8<sup>th</sup> May Morley 06.10-06.25: 158758, 185104  
Manchester Victoria 07.50-08.39 & 18.15-18.37: 66605  
66710, 150107/18/22, 150226,  
153330/58/59, 156423, 158757, 158869, 158901, 185107  
185129/43/46, 195111/32, 319369/84, 802219  
Manchester Airport 17.05-17.40: 175112, 185129/34  
397008

## Bradley Marshall:

14<sup>th</sup> April Taunton: 43009, 43155, 220013, 221123/36/41  
Bridgwater: 68003/18  
Worle: 158951  
Parson Street: 60055  
Nailsea & Backwell: 43207/39  
Bristol Temple Meads: 43009/27, 43154/55/86/94, 43303  
43366, 66748, 68003/18, 158745/65/98, 158951, 165128  
165130-33/36/37, 166202/06/08/10/12/15/20, 220001/03  
220008/11/21, 221119/29/35/36, 800304/05/18, 802007/16  
Lawrence Hill: 166217  
Filton Abbey Wood: 43009, 43155, 166213  
Stoke Gifford: 66510/26/56  
Bristol Parkway: 43207/39, 43304/78, 57305, 66702/52  
68003/18, 70810, 158957, 165132, 166215/18/21, 220007  
220018, 221123/24/31/38, 317650/58, 800003/04/09/15  
800019, 800302/06/15/21,  
Bath Spa: 166220  
Westbury: 59101, 59204, 66040, 66416, 70802, 166221  
Yeovil Pen Mill: 165132  
15<sup>th</sup> April Bristol Temple Meads: 43098, 43122/60  
66748, 158763/69, 165137, 166204/09/17/21, 220003/25  
220026/34, 221120/32, 800313, 802109  
Stoke Gifford: 66526  
Bristol Parkway: 43207/39/85, 43301/03/66, 57305  
66020, 66522, 165130, 166202/10/13, 221119/29, 315826  
315851, 800005/09/10/12, 800303/04/15  
Bath Spa: 166208  
Westbury: 66054  
Yeovil Pen Mill: 37025, 165130, 166215  
16<sup>th</sup> April Yeovil Pen Mill: 158769, 165131  
Castle Cary: 158951  
Westbury: 66140/64, 66623, 166215, DR73905  
Trowbridge: 66522  
Bristol Temple Meads: 43042/88, 43154/94, 66518  
158956, 165129/33-35, 166204/12/14/21, 220004/08  
221138, 800014/21, 800310, 802111  
Bath Spa: 166219  
17<sup>th</sup> April Yeovil Pen Mill: 158951, 166221  
Weymouth: 444002/09  
Upwey: 444010  
Bruton: 802020  
Westbury: 56096, 56302, 66160/64, 66501/91, 66606/13  
70802/06/09/11, 159018, 165132-34/36, 166202/13/17  
Bath Spa: 165135, 166214  
Bristol Temple Meads: 43092, 43162, 43304/78, 158745  
165135, 166206/12/14/20, 220005/17/18/24/27, 800029/33  
800303  
24<sup>th</sup> April Yeovil Jct: 159012/20, 159101/05

28<sup>th</sup> April Yeovil Pen Mill: 158749, 165131, 166210  
Clink Road: 66528  
Westbury: 66152, 66565, 66743/68, 66847/48, 70808/11  
DR73907  
Trowbridge: 60028, 66106, 158745, 165133/36/37  
166215  
Bradford on Avon: 159006, 166215  
Bath Spa: 166206  
Bristol Kingsland Road: DR73935. DR75406  
Bristol Temple Meads: 37667, 43005/16/22/40/42/94  
43122/54/55/60/70/94, 43207/39/85, 43304/66/78, 60028  
60046, 66565, 66601, 66755, 68003/04, 158745/49/63/66  
158767, 158950/57/59, 165130/31/33-35/37, 166202/04  
166206/08-13/15/16/18/19, 220002/03/06/09/10/12/19/31  
221128/30/32/33/36/37, 800003/17/27, 800308/14/15  
802003/18, 802110, DR73122, DR80205  
29<sup>th</sup> April Yeovil Pen Mill: 165132  
Barton: 70811  
Westbury: 59204, 66152, 66847/48, 70808, 158950  
159004, 166204/18, DR73907  
Bath Spa: 158763  
Bristol Temple Meads: 43092, 43162, 60046, 158749/50  
158950, 165132/36/37, 166206/08/10/13/14/17/19  
220011/24, 221137, 800009/17/23, 802006, 802107  
Stapleton Road: 66150, 166219, 221134, 800306  
Patchway: 43154/94  
Severn Tunnel Jct: 166205  
Newport: 43005/16/27/40/41/92, 43122/56/62/92, 47805  
60054/66, 66061, 66172/85, 153312, 153918, 158766/67  
158833, 165130/31/35, 166202/13/14/21, 170102/10  
170270-72, 170622/36, 175001/06, 175102/04/07/11/13  
800007/09/20/29/30/32, 800311/16/17/19  
Cardiff Central: 43005/16/27/40/92/94, 43122/55/56/62  
60020, 66053/54, 66111/54/81/85/88, 66206, 66599  
66748, 143601/02/06/07/16/22/25, 150208/35/36/41/42/45  
150251/54/55/59/62/67/69/79-85, 153312/29/62/67/69/82  
153909/14/18/22/68, 158750/63/66/67, 158833, 165131  
165135-37, 166202/05/13/14, 170106/10, 170202/05/06  
170270/71, 170621, 175001/05/06, 175102/03/11-13  
769003/007/452, 800007/09/20/29/30/32, 800311/16-19  
Cardiff Canton: 37254  
Maindee: DR75407, DR77901  
East Usk Yard: 66621  
Magor: 66424

#### Sean Davies:

1<sup>st</sup> May Penance Depot: 08645, 43027, 43156  
Penzance: 43004/10, 43132, 158766  
Starcross: 43005/16/40/41/69/92, 43154/72/92/94, 43285  
43366, 150221/33/65, 158760, 158951, 166219, 220002  
220012/19, 221130/32/34, 802005/08/10/11/13-15/21  
802103/05/08-10/14  
Plymouth: 43092  
Laura Depot: 43196/97  
Truro: 150216  
5<sup>th</sup> May Hatton: 66704/92/98, 69002, 165025/27, 168002  
168108, 168215/19, 168325/28, 220009, 221137  
18<sup>th</sup> May Worcestershire Parkway: 800030

Kings Norton: DR76919/21-23, DR98003  
Birmingham New Street: 150283, 170504/12/14, 220020  
221104/15/38, 323218, 350237/54, 350409  
Soho Depot: 08805  
Wolverhampton: 170502, 220011/28, 350111, 350377  
390126  
Stafford: 20205/27, 47746, 47805, 56096, 66067/69  
66420/33, 66749/78, 68004, 88005/09/10, 220034, 221111  
221117/28/30/44, 325011, 350102/05/09/11/13/26, 350234  
350244/45/52/55/58/66, 350405/07, 390009/42-45/47  
390107/14/24/26/27/29/34/36/37/48/51/52/57  
22<sup>nd</sup> May Gloucestershire & Warwickshire Railway:  
7820, 7903, D2182, D8137, 5081, 45149, E6036  
24<sup>th</sup> May Worcester: 37421, 43285, 43303, 66074, 66112  
66707/45, 68016/19, 158956, 165128, 170112, 170273  
220023, 221139, 800015, 975025 Caroline  
25<sup>th</sup> May Worcester: 56094, 66101/12, 70809, 158959  
800008/12

#### Paul Rosser:

4<sup>th</sup> May Woodley: 66732/70/87, 150102/19/39/49, 195001  
5<sup>th</sup> May Woodley: 66732/60/87, 150103/11/39, 195127  
6<sup>th</sup> May Woodley: 66713/32/87, 150103/11/39, 195127  
7<sup>th</sup> May Woodley: 66732/70/82, 70015, 150107/31/36  
195125  
9<sup>th</sup> May Manchester Airport: 195001/14, 195104/06/26  
195131/33, 319375/78/83, 331007/13/23/29, 397001/12  
11<sup>th</sup> May Woodley: 66725/49, 150102/09/33, 195003  
12<sup>th</sup> May Woodley: 66749/57/82, 70011, 150132/35/49  
195003  
16<sup>th</sup> May Manchester Airport: 185114/34/43/46, 195014  
195024, 195104/05/26/27/30, 319369/72/81, 331005/06  
331013/14/16/17/23/25/26/30, 397004-06  
18<sup>th</sup> May Woodley: 66729/35/39/92, 150104/11/18/27/28  
22<sup>nd</sup> May Stockport 05.15-06.03: 195017, 195107/24  
220016, 221133, 331001/12/14/19, 390141/53  
Crewe 06.32: 66570, 66778, 90002, 730002  
Wembley Yard: 66007, 720559/60  
Bethnal Green 09.21-10.51: 317341/47, 317502/04/13  
317719, 321302/04/09-11/13/16/18/21/23/29/37/41/42/47  
321427/33/40  
London Bridge 11.14-12.42: 700003/04/08/10/15/17/27  
700029/37/38/40/46/48/50/53/54/59/60, 700102/03/06/10  
700118/19  
Finsbury Park 13.12-15.30: 91111, 387103/07-12/14/16  
387121/24, 700009/21/35/36/39/55, 700109/10/22/24-26  
23<sup>rd</sup> May Manchester Airport: 156420/29, 185108/22/42  
185150, 195016/22, 195106/08, 319368/75, 331001/02/05  
331009, /19/20/28/29, 397005/10

#### Alan Jones:

28<sup>th</sup> April Roy Bridge 08.40: 66733  
Fort William MPD 09.30: 45212, 45407, 37518  
Fort William 09.55: 62005, 57001, 73970, 156445  
Arisaig 13.15: 156476  
15<sup>th</sup> May Forres 20.20: 37116, 37259  
17<sup>th</sup> May Slochd 11.40: 43142/45  
Elgin 15.10: 43125/27, 158721, 170429

20<sup>th</sup> May Elgin 19.40: 66746, 158712  
22<sup>nd</sup> May Inverness 09.00-11.00: 08648, 43035/37  
43132/38/43/47, 66428, 66743, 73967, 158701/10/16/17  
158720, 170408

**Robbie Ellis:**

5<sup>th</sup> May Reading West 06.30-12.30: 59101-03, 60046  
66116/29/76/92, 66513/16/42/46/60/61, 66704/29/69/92  
66798, 69002, 70014, 70803

**Michael Warrick:**

7<sup>th</sup> May Trimley: 66511/72  
Derby Road: 66561  
Ipswich: 66502/06/09/45/55/58/63/72/89, 90005/14/43  
720522/38/50/56, 745105, 755326/30/31, 755418  
Bury St Edmunds: 755411  
Ely: 387119/27  
Peterborough: 37116, 37612, 57305, 66005/41, 66161  
66592, 66610, 66708/18/24/27/28/30/52/54/64/66/67  
156403/08/98, 156909/19, 158770/83, 158857/62, 170109  
170110, 170397, 170623/36, 180102, 321365, 365508/16  
365524/36/40, 700107/11/13/19/34/37/41/44/46, 800102  
800105/10/13, 801101/02/08/12, 801206/07/09/10/12-15  
801217-21/23-26/29/30, 802304/05  
10<sup>th</sup> May Harwich: 317340, 317714/23, 317883  
Parkeston: 66773  
Dovercourt: 66520, 321317  
Felixstowe Beach Station: 66162  
11<sup>th</sup> May March: 66125/62, 66561, 66708/43, 170109  
Ely: 60046, 66077, 66151, 66703, 156470/98, 158777/80  
1588810/46, 170114, 170636, 387101/04/05/12/15/17/18  
387121/22/25/29, 387203, 755333/36/38, 755413/14/21  
Ely [Potters Rail]: 317345, 317662, 317888/92, 365512  
17<sup>th</sup> May Ipswich: 66570/93, 90005/14/43, 720548/53/56  
755330/36, 755424  
Stowmarket: 57002  
Whittlesea: 66730  
Peterborough: 37421, 43295, 43309, 66005/39/51/90/94  
66528/41, 66705/08/11/19/20/53/57/62/66/83/84, 156404  
156407, 158770/74, 158857/65, 170105/09/13, 170420  
170619/23/37/38, 180102/03/12, 365536/40, 700110/25/27  
700132/45/48/54/55, 755333, 755406, 800102/03/10/12  
800113, 800203/04/06/07, 801103/08/09, 801202-04/06  
801208-12/17-19/24/26/27/29, 802304  
Ely: 60029, 156406, 387105/16/21/28, 387203  
Cambridge: 43290/99, 317512, 317710, 379023, 700122  
700151, 755414  
18<sup>th</sup> May Ipswich: 66513/18/28/29/39/58/70, 90006/14/42  
90043, 321320/24/30, 720550, 745001/04/05/07/09  
745106, 755326/29/31/33/38, 755406/07/13/17-19/24  
19<sup>th</sup> May Trimley: 66544/51/96, 66705/19/56, 755332  
21<sup>st</sup> May Trimley: 66005, 66564/87  
24<sup>th</sup> May Tonbridge West Yard: 66763, 73107/28/36/41  
73201  
Tonbridge: 375306/10, 375605/06/08/12/13/25/28-30  
375701/05-07, 375802/04/07/10/11/18/20/22/27/30, 375906  
375921-23, 377313/23, 377405, 465907/11/15/25/29/30/34

**Paul Tisserant:**

6<sup>th</sup> May Cranbrook 07.05-07.17: 159003/17  
Yeovil Jct 08.05 & 16.05: 43062, 43299, 159101/05  
Gillingham [Dorset] 08.36 & 15.45: 158888, 159020  
DR98217  
Salisbury 08.36 & 14.50-15.20: 43062, 43299, 158882/84  
158885/88, 159003/11/13/17/22, 159103/07  
Basingstoke 10.03-14.10: 43058/59, 57305, 66044  
66129/92, 66529/46, 66774, 66847, 66956, 70002, 70805  
158883-85, 159001/02/04/06/08/10/11/16/18/19, 159103  
159104/06-08, 165105/06, 220007/15/17/22, 221122/23  
221129, 317663, 444004-06/08/10/11/15-17/23/24/26/29  
444035/37/39/40/42, 450008/10-12/17/25/28/32/34/35/38  
450040/46/53/57/59/62/80-83/85/87/96, 450101/13/15/18  
450119, 701016

**Martin Willcock:**

15<sup>th</sup> May Tonbridge West Yard 16.00: 66722/40/93  
73109/36, 73213, 73964/65, 466013/34, DR75410  
DR98919/75, ADB 965237

**Ian McNeil:**

18<sup>th</sup> May Broad Green: 319361, 802208  
Wigan North Western: 221104/15, 390044  
Preston: 70810, 156423/41/51/55, 158909, 195108  
319361, 331005/06/09/11/17/20/23/26/29/30, 390044  
390112/54, 397011  
Blackpool North: 195109/24/31, 331003/10/17/23/27  
Lancaster: 156420/87/91, 158908, 195120, 390005  
390117/24/35, 397004/07/11/12  
Manchester Oxford Road: 66742, 319381, 323228  
769450

**Danny Coyne:**

19<sup>th</sup> April Farington Jct 15.45-16.30: 66006  
66301, 195131/32, 221108/14, 319361, 331002/06/14/28  
390127  
21<sup>st</sup> April Farington Curve Jct 14.45-15.10:  
88001, 319375, 319442, 331004/13, 390020, 390104  
397008/11/12  
28<sup>th</sup> April Farington Curve Jct 10.10-12.45:  
37422, 66047, 70014, 156464, 195022, 195131, 221110  
221114, 319366/83, 331002/19, 390001  
10<sup>th</sup> May Farington Jct 14.20-15.15: 43046/55  
195126, 319361/81, 331002/08/11/16, 390126/28/55  
397001/03/12  
19<sup>th</sup> May Farington Jct 10.10-10.40: 66727  
195108/30, 319372, 331001/06/11/19/30, 390119/32

**Mike Waudby:**

19<sup>th</sup> May Beverley 07.21: 802302  
Cottingham 07.28: 170453  
Hull Paragon 07.36-07.44 & 18.30-18.35: 155341  
170457, 185104/33/41, 802304  
Selby 08.27: 158902  
Doncaster 08.50-12.25 & 15.05-17.30: 08724, 43320  
56090, 57305/10, 66005, 66118/85/92, 66304, 66585  
66714/24/66, 91106/10, 150206/14, 158872, 158906/10

170453/54/57/73/78, 170503, 180101/05/08 , 185103/11  
185112/15/21/25/36/39/41/43/45, 220011/15/29, 331102  
331108, 800101/03/06/07/09/12, 800201/03/04/08, 801102  
801103/07-10/12, 801202-04/06/08-12/15/16/19/23/25-27  
802302/04/05  
**Wakefield Westgate 12.57-13.01:** 91106, 800203/08  
**Leeds 13.12-14.25:** 150205, 155344, 158754/87/89/91  
158817/67/70, 158902/03/08, 170459/74, 185105/09/16  
185119/22/31/49, 195004/07/15/17/21, 195102/07  
220032, 221122/37, 331101/05/08, 333003/05/11/15  
800101, 800205, 801221/23, 802217

### **Alan Hardcastle:**

#### **20<sup>th</sup> April Leyton Midland Road:**

10.37 66425 4M07 Tilbury-Daventry  
10.51 66155 6L35 Mossend-Dagenham  
**Stratford:** 19.00 68016+68001 6M69 Sizewell-Crewe  
19.30 90014+90043 4S88 Felixstowe-Coatbridge

#### **22<sup>nd</sup> April Stratford:**

19.29 90016 4S88 Felixstowe-Coatbridge  
19.57 66736 4M02 Felixstowe-Hams Hall  
20.05 66715 4L18 Trafford Park-Felixstowe  
20.31 66592 4M89 Felixstowe-Ditton  
**23<sup>rd</sup> April Stratford:** 11.13 66502 4L41 Crewe-Felixstowe

11.35 59001 6V12 Chelmsford-Acton  
11.47 66162 4E25 Bow-Heck  
11.55 66557 4E24 London Gateway-Leeds  
12.02 66523 4M63 Felixstowe-Trafford Park  
12.21 172102/04 5Q51 Wembley LMD-Ilford  
12.38 66503 4M88 Felixstowe-Ditton  
12.42 90003+90042 4L97 Trafford Park-Felixstowe  
13.10 66776 4M23 Felixstowe-Hams Hall  
13.10 66564 4L36 Wentloog-Felixstowe

#### **27<sup>th</sup> April Willesden Jct:**

12.37 66532 4M63 Felixstowe-Trafford Park  
12.44 66164 6M95 Cliffe-Neasden  
12.48 59203 7O69 Acton-Crawley  
13.00 66087 6O98 Park Royal-Angerstein Wharf  
13.05 59102 6V12 Chelmsford-Acton  
13.20 60028 0Z60 Chaddesden-Willesden F Siding  
13.38 66756 6O64 Ferme Park-Tonbridge

#### **West Hampstead:**

13.52 66776 4M23 Felixstowe-Hams Hall

#### **West Hampstead Thameslink:**

14.47 66556 6M20 Whatley-Churchyard Sidings  
14.50 66113 4O62 Churchyard Sidings-Hither Green  
15.08 66604 6M92 West Thurrock-Tunstead

#### **29<sup>th</sup> April Stratford:** 11.12 66504 4L41 Crewe-Felixstowe

11.26 37423 0Z37 Willesden Brent-Norwich  
11.34 66169 4E25 Bow-Heck  
11.35 66416 6V12 Chelmsford-Acton  
11.51 66591 4E24 London Gateway-Leeds  
12.02 66566 4M63 Felixstowe-Trafford Park  
12.11 66030 6L12 Wembley-Bow  
12.31 47727+360114 5Q97 Northampton-Cricklewood  
12.34 66571 4M88 Felixstowe-Ditton  
12.42 90004+90044 4L97 Trafford Park-Felixstowe  
13.03 66736 4M23 Felixstowe-Hams Hall

15.17 66532 4L75 Trafford Park-Felixstowe  
15.26 172101+172103 5Q51 Wembley LMD-Ilford  
15.31 66543 4M93 Felixstowe-Lawley Street  
**30<sup>th</sup> April Stratford:** 10.40 66169 6L69 Peterborough-Bow  
10.51 37884+321361+321362 5Q76 Clacton-Newport  
11.12 66571 4L41 Crewe-Felixstowe  
11.27 720557 5Q95 Wembley-Ilford  
11.33 59102 6V12 Chelmsford-Acton  
11.53 66511 4E24 London Gateway-Leeds  
12.01 66539 4M63 Felixstowe-Trafford Park  
12.34 66532 4M88 Felixstowe-Ditton  
12.43 66551 4L97 Trafford Park-Felixstowe  
13.08 66736 4M23 Felixstowe-Hams Hall  
13.11 66525 4L36 Wentloog-Felixstowe  
13.22 66788 4L98 Tees Dock-Felixstowe  
**6<sup>th</sup> May Willesden F Siding:** 10.44 60028/46

#### **Wembley Yard:** 66091, 66731, 67021/24

10.45 66136 6M45 Dollands Moor-Daventry

#### **Willesden Jct:** 11.20 66421 4M07 Tilbury-Daventry

11.31 66708+66744 6L37 Hoo Jct-Whitemoor  
11.34 66755 6O88 Acton-Grain  
11.34 66565 7V57 Harlow Mill-Acton  
11.36 59206 7V44 Angerstein Wharf-Acton  
11.50 59101 6V28 Dagenham-Acton  
12.01 66506 4L36 Wentloog-Felixstowe  
**7<sup>th</sup> May Stratford:**  
10.59 57305+321365 5E23 Clacton-Doncaster Wabtec  
11.02 DR77802 6J34 Broxbourne-Upminster  
11.13 66509 4L41 Crewe-Felixstowe  
11.58 66563 4M63 Felixstowe-Trafford Park  
12.11 66549 6V12 Chelmsford-Acton  
12.29 66536 4M88 Felixstowe-Ditton  
12.56 90043+90014 4L97 Trafford Park-Felixstowe  
13.03 66739 4M23 Felixstowe-Hams Hall  
13.11 66503 4L36 Wentloog-Felixstowe  
13.15 44739+360112 5Q30 Cricklewood-Northampton

#### **10<sup>th</sup> May Hornsey:**

11.08 66051 4E26 Dollands Moor-Scunthorpe  
11.50 57305+91102/13/26/29 0Q76 Doncaster- Newport  
12.04 66708 6L37 Hoo Jct-Whitemoor  
12.08 66039 4E25 Bow-Heck

#### **Finsbury Park:**

12.25 66541 4E24 London Gateway-Leeds  
**Belle Isle:** 12.43 66712/84  
**Stratford:** 13.12 66518 4L36 Wentloog-Felixstowe

#### **11<sup>th</sup> May Leyton Midland Road:**

13.56 66620 6L45 Earles Sidings-Dagenham  
14.10 66616 6M92 West Thurrock-Tunstead

### **Ian McAlpine:**

**30<sup>th</sup> April Peterborough:** 66041, 66744, 158773, 170620  
700134/49/50, 755335, 800103, 800201/10, 801104/06-08  
801209/11, DR73906, DR75503, DR98909/59

**Doncaster:** 150218, 331101/07

**York:** 60163, 801107/08

**2<sup>nd</sup> May Darlington:** 156448/84, 158850/55, 801220/29

**York:** 60163, 37422, 68032, 88003, 155342, 195131

**Doncaster:** 56090, 801208

Peterborough: 66197, 66708/36/78, DR75503, 98909/59  
7<sup>th</sup> May Peterborough: 37116, 37612, 66041, 66541  
66718/52, 156411, 170112, 170397, 700111/34/37  
755404, 800206/08, 801108/12, 801206/07/17, DRK81626  
Doncaster: 66127, 67023/27, 331109  
York: 68030, 88003, 155347, 185107/38, 220012  
9<sup>th</sup> May Darlington: 67023/27, 156448/96, 158844  
801217  
York: 66303, 68031, 88003, 195127, 801223  
Doncaster: 66849, 70810  
Peterborough: 66716/31/39/67/85  
14<sup>th</sup> May Peterborough: 66041/94, 66701/14/68  
156406, 158774, 170619, 700103/45/54, 755332, 800107  
800209, 801215/24/26, DR75503  
Doncaster: 08853, 37610, 66569, 331107/09  
York: 88003, 185117/34, 220007/10, 801226  
16<sup>th</sup> May Darlington: 156421, 158816, 801201/03  
802208  
York: 60066, 68020, 88003, 195111  
Doncaster: 56096, 56105, 70808, 801224  
Newark Northgate: DR73113  
Peterborough: 66703/67/70/72/76  
17<sup>th</sup> May Peterborough: 158865, 170109, 387108, 700103  
700124/25, 755407, 800103/07, 800206/07, 801211/12/18  
Huntingdon: DR75504  
Hitchin: 700058, 700110/16  
Stevenage: 700001, 700139/48, 717010, 801206  
Welwyn Garden City: 37421, 700021  
Alexander Palace: 700035  
Hornsey: 66039  
Finsbury Park: 700111/48, 717021, 800206/07  
St Pancras: 700047, 700110/19/32  
Farringdon: 700140/41  
City Thameslink: 700012/43  
Blackfriars: 700010/22/34, 700129  
London Bridge: 375922, 375606/14, 376001/10/16/29  
465156/59/96, 465912/16, 466026, 700017/23, 700118/27  
700135/36  
Honour Oak Park: 378226  
Sydenham: 378229  
Norwood Jct: 377309/20, 700155  
Selhurst Depot: 171804, 377151  
East Croydon: 377401, 700145/47/52, DR73917/18  
Horley: 700107  
Gatwick Airport: 387207, 700109/25  
Crawley: 66780  
Three Bridges: 377327, 700019/33, 700122/24  
Haywards Heath: DR97508/608/808  
Wivelsfield: 700104  
Hassocks: 377115  
Preston Park: 387221, 700131  
Brighton Station & Depot: 313205/09/16, 377128/29/39  
377418/39/70, 387208/09/12/13/17/19/22, 700026  
700122/38  
Purley: 700019  
South Croydon: 700105  
Forest Hill: 377322  
New Cross Gate: 376012

York Way Box Jct: 700002  
Potters Bar: 700011  
Hatfield: 717022  
Biggleswade: 700132  
St Neots: 700134  
18<sup>th</sup> May Peterborough: 156404, 158858/64, 700132/48  
800101/10, 800204, 801208/24  
Hornsey: 717009/10/15  
King's Cross: 387109/26, 700002, 801224, 802302  
Paddington: 387135/38/55, 800007/11/23/33, 800303/17  
800319/20, 802102/10  
North Pole: 802002  
Acton: 66558  
Reading: 387306, 450045, 800023  
Newbury: 387151/55  
Westbury: 66107  
Castle Cary: DR73905  
Taunton: 43022/92, DR75011  
Exeter: 66622, 150207/63, 159102/05, 166212, 802107  
Starcross: 166216  
Newton Abbot: 150207/44/49/63, 220004, 221140  
Dawlish Warren: 150239/46  
St James' Park: 166216  
Topsham: 150247  
Exmouth: 150207/63  
Exeter Central: 158959  
19<sup>th</sup> May Exeter: 43010/29, 43154/58/72/94, 43207  
43378, 150202/21/32-34/39/46, 158950, 159008, 166204  
802022, 802101/11  
Newton Abbot: 150207/63, 220002/19/29  
Crediton: 158956  
Eggesford: 158959  
Plymouth: 43029, 43154/60, 802104/07  
Laira: 08644  
Exmouth Jct: 166203  
Lymptone Village: 150265  
20<sup>th</sup> May Exeter: 43029, 43154, 150221/32/39/65  
166203, 220011/24, 800301, 802008/09/13/20  
Tiverton Parkway: 43207, 43378  
Fairwater Yard: ADB965223  
Newbury: 387144  
Reading: 387142/57/74  
Hayes & Harlington: 66601  
Acton: 66006, 66186  
North Pole: 345053, 800312/20  
Paddington: 345026/57, 387135, 800316  
King's Cross: 66751, 387104, 700021, 800109, 801210  
801219  
Bounds Green: 700039, 801221/22  
Peterborough: 170623, 700133  
21<sup>st</sup> May Peterborough: 66420, 66708/19/20/48/57  
158785, 158806, 170102, 170503, 387119/22/26/28  
700127/41, 755408, 800103/11, 801108, 801211/16  
Newark Northgate: 158788  
Retford: DR97505/605/805  
Doncaster: 56096, 56105, 66585, 66712/33/44/63, 70802  
70803/15, 331109, 800106, ADB965579, ADB966098  
York: 37422, 43285, 43366, 60066, 66167, 66304, 68023

68029, 155341, 170458, 185108/27/42, 195112, 221140  
800102/06/12800204, 801108/09/12, 801212/18/24/26  
802207/11/13/16/19  
**22nd May Peterborough:** 66708/19/30/53, 156497  
156912, 800109, 801111, 801218  
**Lincoln:** 156909, 158866, 195004, 800202

**David Robinson:**

**24th May Durham:** 66501, 800103, 801104/12, 801212/29

**John Evans:**

**17th May Crewe 14.13-17.30:** 37558, 37800, 56096  
57308, 153320, 156912/17, 158812, 175109/12/13  
319367, 323228/31, 350125/30, 350248/49/55/56/59/65  
350267, 350367-70/74, 350407, 390001/02/10/13/39/43  
390044, 390107/14/18/25/26/50/52/54-57

**18th May Crewe 05.10-07.20:** 90010, 156479, 156919  
158820/41, 175111, 221126, 319381/83/86, 350109/26  
350231/33/37/55/65, 390046, 390104/17/19/27/30/32/34  
390136

**Edinburgh 11.45-13.00:** 43163/68, 92014, 158718/28  
170407/10/12/27/32, 334008/11/31, 385106/07/13/15/23  
385124, 397003, 801203/15

**Haymarket 13.30-15.30:** 43021/37, 43143/44, 158730/34  
158741, 170393/94, 170405/08/14/15/21/25/27/50/70/71  
334007/20-22/32/40, 385003/14/17/22/23/26/31/38/40  
385101-03/07/09/10/15/16/18/23/24, 390117, 800101  
**Glasgow Central 17.05-19.00:** 156430-34/39/42/67/93-95  
156501/04/06/10/11/13/14, 158723, 220010, 318266  
320305/15/21, 380001-07/09/15-19/21/22, 380101/02  
380107-09/11-16/19, 385003/07/12/14-16/19/20/23/31  
385035-37/40-42, 390114/21/38, 397004/11

**19th May Liverpool Lime Street 09.15-10.30:** 195105

319372/79/81/86, 350252/60/67, 390010, 390123, 397007  
802207/19

**Preston 11.50-16.20:** 37402/07/25, 66031/90, 66303  
66761, 70014, 88004/10, 150129, 156423/52/55/60/72/86  
158784, 158844, 195102/04/06/07/28/30-33, 319366/67  
319372/83/87, 331001/04/06-09/11-14/16/17/19-21/29/30  
390010/46, 390117/19/24/29/34/35/54/55/57, 397003/04  
397008/10, DR73909

**20th May Crewe 05.50-07.20:** 56096, 66103, 156411  
158861, 175103/05, 221106/08, 319385, 350109/13  
350247/57/60/64, 350375, 390001, 390104/15/17/23/27

**Carlisle 08.00-11.40 & 17.45-20.00:** 37116, 37219, 66119  
66301/02/05, 70813, 88008, 90008, 156429/43/44/69/87  
156507, 158815/22/49/58/59, 221104/17, 325008/14  
397003/04/09/10/11, 390016/47/50, 390104/07/18/26/28  
390130/34/54

**Newcastle 13.55-16.10:** 60021, 156443/54/65/75, 156507  
158792, 158843/51, 220005/15/30, 800101/07, 800208  
801107/10/11, 801206/11/23/26/27, 802206/11/17/18  
DR75302

**21st May Manchester Piccadilly 11.00-12.30:** 66742  
150108/10/21/28/35/36/43, 156423, 175003/05/07  
175103/14, 185103/08/09/22/38/40/42, 195002/04/16  
195107/29, 220008/16/20/26, 221116/30, 319361/78  
319383-85, 323230/31/35/39, 331004/08/16/19/25  
390104/35/37, 397003

**Warrington Bank Quay 13.30-15.40:** 66059/60  
66155/99, 68025, 70014, 88010, 90039, 175007/09  
175101/06, 195004/14/15, 195131, 390005/06/46  
390126/31/52

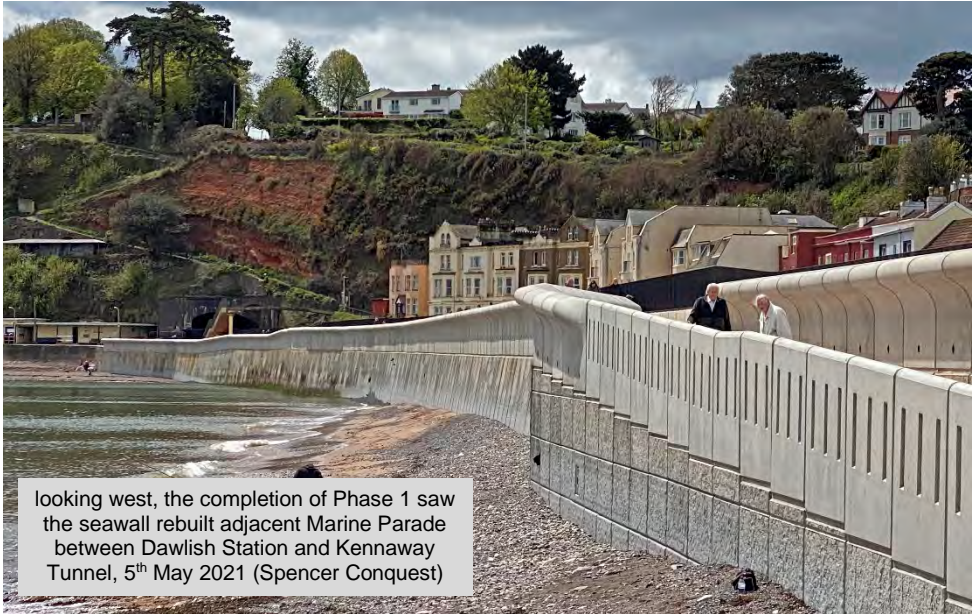
**Chester 16.30-17.15:** 150110, 153320, 153922/35/68  
175001/07, 175108/10, 195009/20, 221105

## RETRO PHOTO SPOT: RTC TEST VEHICLES



above DB 977392 (ex-CI.101 50167) built 01/57, wd 02/87, converted by 06/88 for its RTC role, preserved in 2008 at CHV it was never restored and was scrapped on 10<sup>th</sup> March 2012  
RTC Derby, 13<sup>th</sup> November 1988 (Martin Hall)

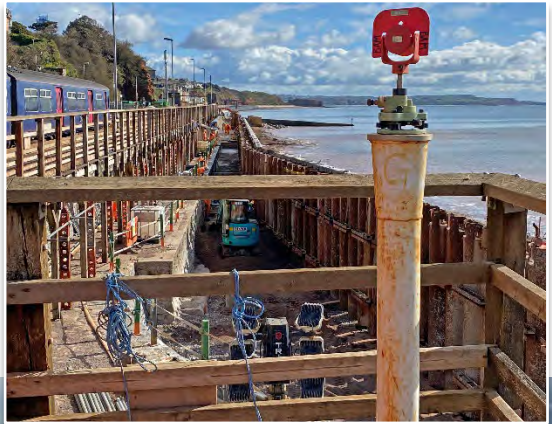
# INFRASTRUCTURE NEWS



looking west, the completion of Phase 1 saw the seawall rebuilt adjacent Marine Parade between Dawlish Station and Kennaway Tunnel, 5<sup>th</sup> May 2021 (Spencer Conquest)

Following the works to strengthen the seawall around Dawlish Station under the Coastal Resilience Project (see above, right and below), approval to extend the rockfall shelter by 209m north of Parsons Tunnel between Dawlish and Holcombe means work will start in August 2021, hopefully with completion in the summer of 2022.

*right & below* looking east, Phase 2 underway alongside the Station towards Coastguards Breakwater, both 5<sup>th</sup> May 2021 (Spencer Conquest)



A new station is being built at Brent Cross West on the MML on the former Cricklewood Depot site as seen by Colin Pottle from a passing train on the 4<sup>th</sup> May 2021. The station is due to open at the end of 2022.



**HS2:** The first tunnel boring machine (TBM) 'FLORENCE' began its 3 year 10 mile long bore heading north under the Chilterns on the 13<sup>th</sup> May 2021 from the eastern portal. At 170m, it is the longest TBM to work in the UK. A second TBM 'CECILIA' was to start shortly from the western portal.

**Misc News:** Without warning a wall and part of the station roof on the Manchester bound platform at Northwich collapsed mid-morning on the 18<sup>th</sup> May. With debris landing on the track services were suspended until later that evening.

# NOSTALGIA CORNER: DELTICS

Two iconic Deltics that have both survived into preservation though currently out of use. Mainline certified D9009 (55009) 'ALYCIDON' is under repair at Barrow Hill in the care of the Deltic Preservation Society (DPS). D9016 (55016) 'GORDON HIGHLANDER' has been cosmetically restored only and is now at the Margate 'One to One' Museum in the care of LSL as part of the 'Icons of Steam' fleet.



*above* 55016 (built 07/61, wd 12/81, preserved by Deltic 9000 Fund with initial operation on NVR having been bought as a source of spares)

Finsbury Park Depot (allocated to York), 6<sup>th</sup> April 1974, (Derek Everson)

note that this loco still retains the quarterlight and headcode panel which it lost in a heavy general overhaul, the first for the class which proved uneconomical so shortening their career with withdrawals starting in 1979, it was also famous for being painted in purple in late 1999 whilst on hire to

Porterbrook until 2002, though mostly under repair !!

*below* 55009 (built 10/61, wd 01/82, preserved by DPS in 08/82 with initial operation on NYM then to BH 12/98) King's Cross, 26<sup>th</sup> April 1980, (Derek Everson)

note the distinctive white cab windows denoting it was allocated to Finsbury Park Depot, an embellishment gained in 1979, plus the plated over quarterlight and headcode panel



# PHOTO SPOT: TOTON YARD

Having dealt with the mail coaches it seems Toton Yard has become a temporary scrapyard with wagons being dragged in to be unceremoniously cut up, mostly having been turned upside down. Some have been taken away by road, similarly upside down...easier to secure I suppose.



*above* YLA 967544 16<sup>th</sup> May 2021 (Neil Dix)



*above* YQA 967567 Toton 16<sup>th</sup> May 2021 (Neil Dix)  
*below* MTAs 395223 on the lorry & 395267 Toton 22<sup>nd</sup> May 2021 (Neil Dix)





above MTA 395192  
22<sup>nd</sup> May 2021 (Neil Dix)  
next in line were 621532,  
621520, 394659 & 100082

left YLA 967537 Toton  
22<sup>nd</sup> May (Neil Dix)

below awaiting their turn ?  
YLA 967510 + SPA  
460691 & bottom  
BYA 966110/219/246,  
Toton 16<sup>th</sup> May (Neil Dix)



The three long term stored **BYA Bogie Covered Coil Carriers** 966110/219/246 have been separated, possibly escaping the scrap man for now, as seen above by Neil Dix on the 16<sup>th</sup> May 2021.

# RAIL TOUR PHOTO SPOT

With the relaxation of restrictions, the rail tour operators have been busy testing stock and running their first tours of 2021 with so many it has been a bonanza after the long drought.



*above* 4-6-2 60163 'TORNADO' on 1Z15 Barrow Hill – Carlisle leg of the Leicester – Leicester via Barrow Hill and Carlisle 'The Pennine Explorer', Newton Sdgs Cottages (seven miles north of York) (10.26) 22<sup>nd</sup> May 2021 (David Rice)

*below* 4-6-2 35028 'CLAN LINE' on Belmont British Pullman London Victoria – Bristol Temple Meads taking a 10 min stop at Swindon (11.50-12.00) 19<sup>th</sup> May 2021 (Colin Pidgeon)



*above* 57313 t&t 57601 on WCR 1Z10 Preston - Cardiff Northern Belle, Rhosymedre (10.21) 21<sup>st</sup> May 2021 (Martin Evans)

*left* 4-6-2 34046 'BRAUNTON' t&t 47593 on LSL Crewe - Coton Hill, Shrewsbury, Rhosymedre - Crewe test run (11.04) 25<sup>th</sup> May 2021 (Martin Evans)



above 4-6-0 45231 'THE SHERWOOD FORESTER' + 4-6-2 34046 'BRAUNTON' on an LSL test run, Chester (11.00) 24<sup>th</sup> May 2021 (Neil Jones)



above 66746 with the first Royal Scotsman of the season and in fact the first since 2019, heading east through Keith (20.07) 20<sup>th</sup> May 2021

below 4-6-2 60103 'FLYING SCOTSMAN' t&t 47746 passes Balshaw Lane, Euxton on 5V44 10.10 Carnforth – Southall (11.45) 18<sup>th</sup> May 2021 ahead of Steam Dreams London Victoria - Chertsey Circular Excursion on the 20<sup>th</sup> May 2021 (Mike Brook)





D6817 + D6851 on  
The Orcadian, Edinburgh Waverley  
7<sup>th</sup> May 2021 (David Inett)

*right* 86259 on Railway  
Touring Co 1Z86 London  
Euston – Carlisle  
'Cumbrian Mountain  
Express', Nuneaton  
(11.00) 22<sup>nd</sup> May 2021  
(David Knight)



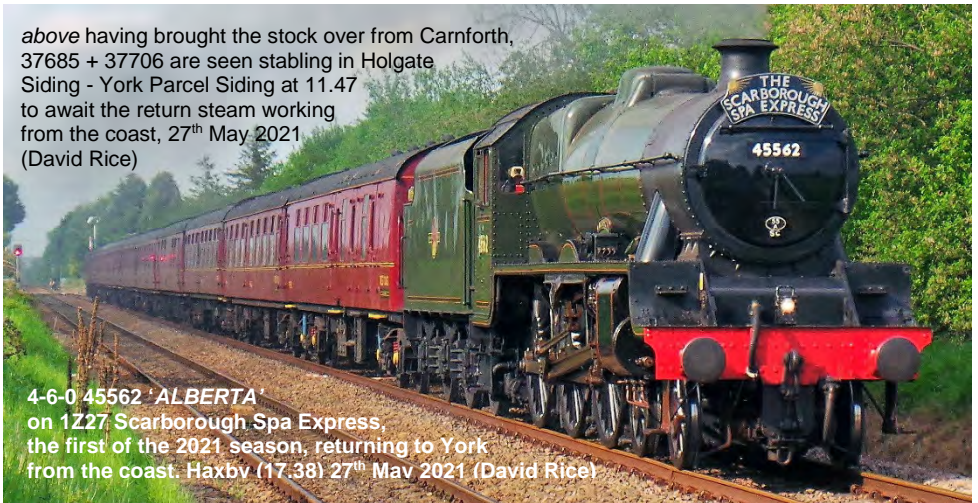
*below* 57601 t&t 57313 on  
1Z61 06.59 Birmingham  
International - Harrogate  
Northern Belle, Dringhouses  
(10.52) 22<sup>nd</sup> May 2021  
(Mike Brook)



4-6-2 60103 'FLYING SCOTSMAN' t&t 47746 + 35486, 99723, 99328, 5035, 4905, 3143, 99125, 99347, 99351, 1666, 99352, 99121 on Steam Dreams 'Surrey Hills Evening Tour' 1Z76 18.19 London Victoria - Chertsey Clapham Jct (18.34) 20<sup>th</sup> May 2021 (Toby Radziszewski)



above having brought the stock over from Carnforth, 37685 + 37706 are seen stabling in Holgate Siding - York Parcel Siding at 11.47 to await the return steam working from the coast, 27<sup>th</sup> May 2021 (David Rice)



4-6-0 45562 'ALBERTA' on 1Z27 Scarborough Spa Express, the first of the 2021 season, returning to York from the coast. Haxbv (17.38) 27<sup>th</sup> May 2021 (David Rice)



43055 t&t 43046 on  
1Z60 Eastleigh - Penzance  
'Cornish Coastal Pullman',  
Chippenham (08.02) 29<sup>th</sup> May 2021  
(Keith Blackman) note now with  
the new power car rear door louvres



47593 t&t 47614 + 3426,  
3384, 3231, 3348, 1211, 3312,  
3438, 80043, 3188, 3229, 17056 on  
Statesman 'Settle & Carlisle Circular'  
Newcastle - Appleby leg,  
Overton (10.27) 29<sup>th</sup> May 2021 (David Rice)

right 47593 t&t D1935 on 1Z88 Snowdonian  
Statesman Hull - Blaenau Ffestiniog,  
Castleton (09.02) 18<sup>th</sup> May 2021 (Harold Hull)

below 57601 t&t 57314 + 99025, 3174,  
3273, 1566, 3267, 3275, 3247, 325, 17167,  
10729, 10734 on Northern Belle 1Z54  
York - Newcastle, Beningbrough (11.01)  
28<sup>th</sup> May 2021 (David Rice)



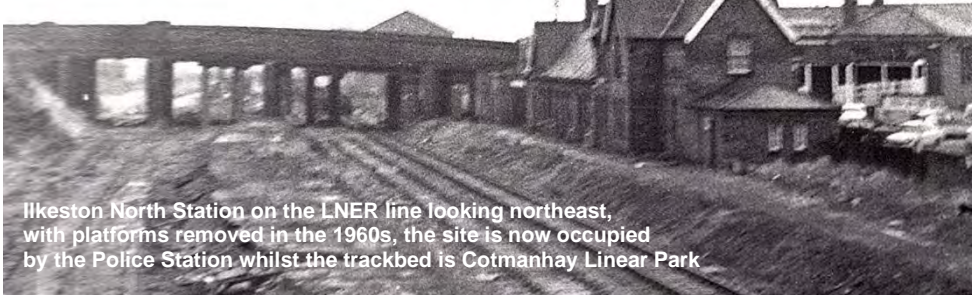
# ALL OUR YESTERDAYS

## The Railways around Ilkeston in the 1960s by Martin Hall:

I was born in Ilkeston in 1947 at which time the railway systems were quite extensive not only for passenger but to the many industrial sites. The railway came to Ilkeston in 1837 but rapidly grew encompassing coal pits and Stanton Iron Works. We had two of the big railway companies LMS and the LNER serving the town. There was Ilkeston Junction and Ilkeston Town for the LMS and Ilkeston North for the LNER on the Derby Friargate to Nottingham line. It was a joy in my youth going to Bennerley Junction where the LMS met the LNER which crossed over the River Erewash on Bennerley viaduct (see **VIADUCT / BRIDGE SURVEY**)



*above* an unidentified southbound Cl.45 approaching Ilkeston Jnt & Cossall Station in the 1960s with Bennerley Viaduct in the background



*Ilkeston North Station on the LNER line looking northeast, with platforms removed in the 1960s, the site is now occupied by the Police Station whilst the trackbed is Cotmanhay Linear Park*



*above* looking south 2-6-0 42782 passing under Bennerley Viaduct with the corner of Bennerley Jnt signal box just visible on the right above the maroon Mk1 coach



above D1833 passing Ilkeston Jct & Cossall Station looking south in the 1960s with sidings to Cossall Colliery (gone) and slag heap (still there as ski slope) to the left with lace factory and the Ilkeston branch on the right



Close by we had Toton MPD and the stations of Derby Midland (LMS) Derby Friargate (LNER), Nottingham Midland (LMS) and Nottingham Victoria (LNER), a rich hunting ground for LMS and LNER locomotives. Now we have just one line, Erewash Valley, the former LMS line and a new station built, well a halt, no station building, just to the north of Ilkeston Jct. Much of the freight has gone especially the coal traffic and now only passenger services pass through.

above D5524 Bennerley Jct 1960s, looking north from the footbridge north of Bennerley Viaduct with the connection to the Bennerley Ironworks visible under the mineral wagons

right D5815 Ilkeston Jct 1960s





above south of Ilkeston was Trowell Jnct signal box with Stanton Iron Works behind, 1960s

We also had the Derby Railway Works so there was always new diesels being tested on the LMS line and still steam trains as well. We did have GT3 come over the viaduct one year. We also have the Railway Technical Centre (RTC) developing new traction like the HST type 1.



2-6-0 43135 Ilkeston, Jnct 1960s



D5184 + D5298  
Nottingham mid 1960s

# VIADUCT / BRIDGE SURVEY

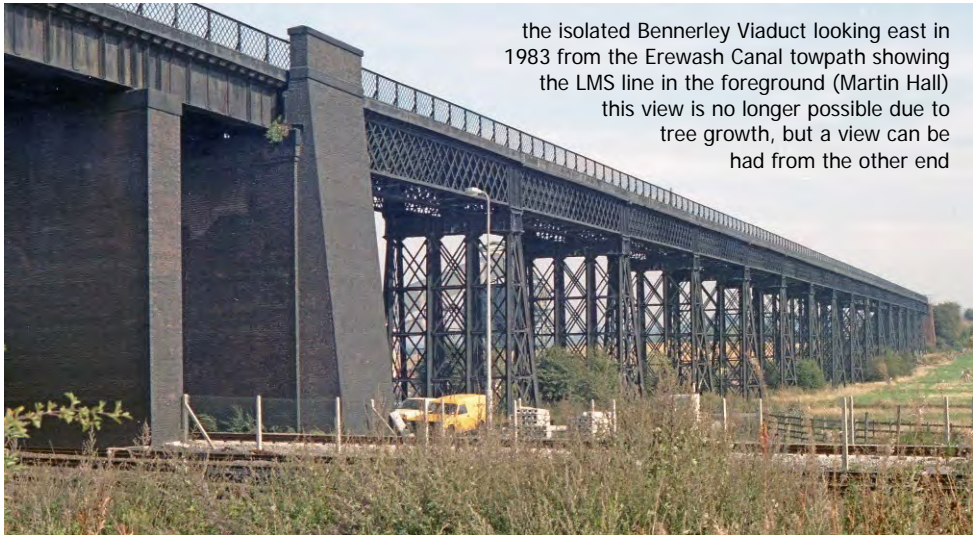
*An occasional series on viaducts and major bridges found around the UK, whether still operational or disused. If you have good photos of interesting structures, operational or disused, please submit.*

**Wrought Iron Railway Viaducts:** There were only a handful of viaducts built out of wrought iron in the UK of which just two survive, Bennerley and Meldon both of which are cast iron trusses supported by wrought iron piers. Those that have been demolished were:

- Dowery Dell Viaduct which carried the Halesowen to Longbridge line, demolished in 1964
- The first Tay Bridge which collapsed in 1879
- Crumlin Viaduct (46m) carried the Taff Vale Railway, demolished in 1965
- Belah Viaduct (317m) built 1860 carried the Durham & Lancashire Union Railway and was the tallest viaduct in England at 196ft until it was demolished in 1963
- A viaduct for the West Meon Railway demolished in 1955.
- Staithes Viaduct carried the Whitby, Redcar & Middlesbrough Union Railway, demolished in 1960.

**Bennerley Viaduct, Nottinghamshire:** Map Ref SK 47285 43847 (centre)

Built by the GNR in 1877, between Awsworth and Ilkeston, to cross the River Erewash on the Derbyshire & Staffordshire Railway from Awsworth Junction and Derby. Grade II listed Bennerley Viaduct is the longest of only two wrought iron viaducts left in the UK at 443m with 16 deck spans. It is 18.5m at its highest and had three additional spans at the Ilkeston end to span the Midland Railway and Erewash Canal, the latter now demolished. At the eastern end, the line spanned the Nottingham Canal on a bridge also now demolished leaving the viaduct isolated. The disused canal actually ends at this point. Closed to rail traffic in 1968 it was sold to Railway Paths in 2001 who did some restoration work in 2014 but in partnership with the Friends of Bennerley Viaduct started work to create a footpath in 2020 and hope to re-open it later in 2021 following a £1.4 million refurbishment. It is included on the 2020 World Monuments Watch.



the isolated Bennerley Viaduct looking east in 1983 from the Erewash Canal towpath showing the LMS line in the foreground (Martin Hall) this view is no longer possible due to tree growth, but a view can be had from the other end

Adjacent and north of the viaduct was Bennerley Ironworks which was demolished to be replaced by a British Coal distribution centre, also now demolished. Both were served by sidings from the MR line with the ironworks also served from the GNR line.

If you want to view this viaduct, the A6096 Awsworth bypass passes the eastern end between Ilkeston Station and the A610, a distance of about 1½ miles. For about ½ mile on the western side of the A6096 is the Nottingham Canal and a footpath which can be accessed about halfway along the A6096 via a

small parking area marked as Viaduct Viewing Point. The footpath heads north giving views of the north side of the viaduct but both the canal and footpath also head south crossing Newtons Lane (then Awsworth Road). This road leads west off the A6096 across the Erewash Valley line into Ilkeston. Side views of the viaduct are possible along this road before crossing the railway. There is a footpath from Awsworth Road running along the eastern side of the railway under the viaduct to a railway footbridge, again giving views from the northside of the viaduct, which then connects to the Erewash Canal towpath. Presumably once opened as a footpath, access to the viaduct will be from these footpaths mentioned.

**Meldon Viaduct, Devon:** Map Ref SX 56486 92354 (centre)

Built in 1874 for the London & South Western Railway to cross the West Okemont River 4 miles west of Okehampton. Closed in 1968 the remaining single line was lifted in 1990 as the viaduct was deemed to weak to continue carrying rail traffic. Now listed as a scheduled monument the viaduct was refurbished in 1966 to carry the Granite Way, a long distance cycle / footpath. It is 163m long and 46m at its highest. With the Exeter – Okehampton line now refurbished for regular passenger services starting in the summer of 2021 it has been suggested that this route be fully re-opened through to Plymouth as an alternative to the storm lashed GWML through Dawlish, but the viaduct would have to be replaced at substantial cost. Strengthening of the seawall has been undertaken with other works in hand so it is unlikely this inland route would be reinstated.



*above & below Meldon Viaduct looking west , 15<sup>th</sup> September 2019*



# PRESERVATION GALAS

**Severn Valley Rly (SVR) Spring Diesel Bash by Kevin Stevens:** With the most diesels gathered operating together on one day since 2019, SVR staged their first big diesel gala since opening up again from the 13-16<sup>th</sup> May 2021 and I had the pleasure of attending on the 13<sup>th</sup> & 14<sup>th</sup>. Locos in use were D9551, D8568, 20227 (visiting), D821 'GREYHOUND', D1015 'WESTERN CHAMPION', 33108, 40106, D1755, 50007/35/49. Being ticket only the procedure was to 'check in' at the ticket office where you were allocated your carriage number and seat number on your chosen train, in my case 'Train 3 - Sulzers'. There were four trains to choose from, the others being:

Train 1 - CI.50s (50007/35/49)

Train 2 - Hydraulics (D821, D1015)

Train 3 - Sulzers (33108, D1755)

Train 4 - English Electrics (20227, 40106)

We were sat at a table with bin bag and hand sanitiser supplied. Our train started at Kidderminster Town and ran all the way to Bridgnorth where you had around 20 mins to get some photos. We then returned nonstop back to Kidderminster where they changed loco for the short run to Bewdley and back with one of the shunters powering the train. Another loco of choice was then put in charge for the second trip to Bridgnorth which was repeated for the third round trip, all part of the ticket price, a total of 96 miles + the shuttles. It was actually quite relaxing staying on the same train, instead of the usual mad scramble jumping out at stations to 'bash' another train. I had a great time with my first day travelling behind 33108 and D1755. My second day consisted of a day behind the CI.50s. It was a good atmosphere on both days, although very quiet compared to normal. The sounds and smells were awesome.



*right* 20227 + 20205 en route from on MRB - SVR, Walsall (12.34) 12<sup>th</sup> May 2021 (David Williams)

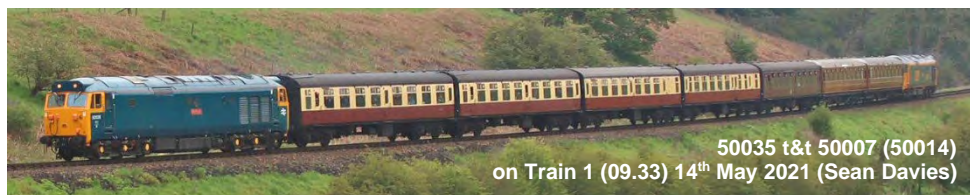


**D8568 operating for the first time in BR blue on a Bewdley shuttle with Train 4 Kidderminster Town, 13<sup>th</sup> May 2021 (Kevin Stevens)**



**D1015 on Train 2, Kidderminster Town, 14<sup>th</sup> May 2021 (Kevin Stevens)**

Also attending the Gala was Sean Davies who took the following photos from Eardington Bank on the 14<sup>th</sup> May 2021 showing more of the traction and coaching sets in use. The coaches were combinations of GWR, LMS and BR Mk1s.



**Mid Hants Rly (MHR) Spring Steam Gala:** Over the bank holiday weekend 30<sup>th</sup> April – 3<sup>rd</sup> May 2021, MHR held its first Gala of 2021 with a GWR steam theme. Visiting locos were 2-6-2T 4575 Class 'Small Prairie' 5526 (South Devon Railway) 0-6-0PT 4612 (Bodmin & Wenford Railway) which was a replacement for 0-6-0PT 6435 which failed with a boiler tube issues right before the event. Resident locos in use were, S15 4-6-0 506, Schools 4-4-0 30925 'CHELTENHAM', BR Std 2MT 2-6-2T 41312 and BR Std 4MT 2-6-0 76017. Though not able to attend Chris Addoo was out and about lineside to capture the event.



2-6-2T 5526 on Alresford - Alton,  
Wonderers Curve, MHR (09.29)  
2<sup>nd</sup> May 2021 (Chris Addoo)



*left* 0-6-0PT 4612 with two  
Mk1 coaches + two SR  
PMVs in tow on Alresford -  
Ropley, Northside Lane,  
MHR (11.50) 2<sup>nd</sup> May 2021  
(Chris Addoo)



4-6-0 506 on Alresford - Alton, Wonderers Curve,  
MHR (10.54) 2<sup>nd</sup> May 2021 (Chris Addoo)



2-6-0 76017 t&t 4-6-0 506  
on Alton - Alresford, Bishops  
Sutton Bridge, MHR (10.10)  
3<sup>rd</sup> May 2021 (Chris Addoo)

# TRAM, LIGHT RAIL & METRO NEWS

**West Midlands Metro:** All track is now in place on the extension to Edgbaston.

**Tyne & Wear Metro:** The new T&W trams are be known as Cl.555.

**Blackpool & Fleetwood Tramway by Harold Hull:** Heritage service resumed in Blackpool over the Bank Holiday weekend with four cars out most days, including both boats, Bolton 66 and a mixture of single deck railcoaches and double deck balloons. Sunday saw 600 fail at North Pier, eventually returning to depot. 621 was in front of it and I was on 717. I had to wait for 621 to depart before passing 600 and reversing into the loop. This was a rare move as photographed right taken from top deck of 717. Pre booking of tours via website advised but "walk on" accepted if a particular tour is not fully booked.

**Manchester Metrolink by Geoff Hope:**

**May 2021:** The 'BE TRAM AWARE' campaign introduced in late April, preparing motorists for increased traffic conditions, did not help three casualties during May. On the 4<sup>th</sup> a tram v van close to Parkway stop resulted in Trafford Centre line services being suspended. On the 6<sup>th</sup>, services on the Ashton line were disrupted due to a tram 3078 v car collision though it appeared the tram driver attempted an emergency stop before the car collided with the tram. Tram 3078 was observed on the 14<sup>th</sup> on the East Didsbury -Rochdale service so clearly damage not too serious. On the 10<sup>th</sup>, tram 3100 v car at Exchange Quay on the Media City / Eccles line. No injuries were reported in these incidents. Tram 3100 was included in my observations on the Airport service on the 28<sup>th</sup> May so again no serious damage.



Planned track replacement works on the 15-16<sup>th</sup> May took place at Cornbrook which overran into Monday 17<sup>th</sup>. Though there was disruption, services started to get back to normal at around 18.00. Trams 3124 & 3125 ran as a pair on mileage accumulation between Queens Road Depot and Bury on Friday 21<sup>st</sup>, tram 3126 arrived on the 22<sup>nd</sup> May for commissioning.

The M5000 trams have been serving Manchester since July 2009 and by the end of April 2021 had clocked up over 100 million km by (the current fleet of 123 trams) with 3008 travelling furthest covering 1,204 million km since 2010.

A leading independent study found that the inbuilt ventilation system in the M5000 trams limited the risk of transmission of viruses such as Covid 19, circulating fresh air around the tram. Trams are ventilated through fans on the roof and air diffusers in the ceiling with air exhausted from under seat vent holes. It was also found the risk of infection was reduced by two thirds with passengers wearing face masks.

**Observations at Cornbrook on Friday 28<sup>th</sup> May 10.00 -11.30:** (107 trams in service)

**Altrincham – Piccadilly:** 3002 + 3059, 3003 + 3037, 3006 + 3032, 3025 + 3051, 3028 + 3034, 3031 + 3033, 3040 + 3058, 3047 + 3048

**Airport - Victoria:** 3001, 3026, 3029, 3041, 3063, 3069, 3072, 3080, 3085, 3100, 3102, 3103, 3110

**Eccles / Media City - Ashton:** 3004 + 3086, 3010 + 3083, 3016 + 3057, 3030, 3053, 3066, 3067 +3097, 3070 + 3087, 3076 + 3096, 3081, 3098, 3101, 3106 + 3113, 3121

**Trafford Centre - Cornbrook:** 3062, 3104, 3109, 3115, 3118

**East Didsbury - Rochdale:** 3007 + 3038, 3009 + 3068, 3020 + 3023, 3021 + 3049, 3022 + 3039, 3042 + 3052, 3043 + 3075, 3045 + 3073, 3054 + 3090, 3056 + 3122, 3061, 3064 + 3093, 3065 + 3092, 3071 + 3088, 3079 + 3108, 3082 + 3120, 3094 + 3117, 3119 + 3125

**Victoria 12.00 - 13.15:**

**Bury - Piccadilly:** 3011 + 3077, 3018 + 3112, 3035 + 3107, 3036 + 3050, 3055 + 3084, 3060 + 3123, 3078 + 3116, 3091, 3111 + 3114

**Queens Road depot 13.20 - 13.30:** 5 unidentified trams + 3124, 3126

**Old Trafford Depot 14.05:** 3014

**Not seen:** 3005, 3008, 3012, 3013, 3017, 3019, 3024, 3027, 3044, 3046, 3074, 3089, 3095, 3099, 3105  
Including 5 unidentified trams

## PROTOTYPE EMUs

Forerunners of BR second generation EMUs, BREL built three prototypes, PEP 2 car 2001 (64300 + 64305) and four car 4001 (64301 + 62427 + 62428 + 64302) / 4002 (64303 + 62426 + 62429 + 64304) in 1971 at York Works. The driving cars were classified as Cl.461 with non-driving motor cars as Cl.462 but later classified as Cl.446 2PEP (2001) and Cl.445 4PEP (4001/02). Outside of Scottish Region these were the first BR built EMUs with electric sliding doors, three sets per side, as other classes were air operated. They could not work with any other stock due to the new Scharfenberg coupling system. They entered service on the southwest division in June 1973 based at Wimbledon and Strawberry Hill but quickly moved to the southeast division in August 1973. Not particularly successful 2001 was withdrawn in August 1974 followed by 4001/02 in May 1977.



above 920001 RTC Derby,  
3<sup>rd</sup> July 1983 (Martin Hall)

right 4002 (64305) Selhurst Open Day,  
16<sup>th</sup> September 1973  
(Derek Everson)



Following passenger use the units were taken into departmental service with 2001 reformed as 3 car Cl.920 920001 with a newly built pantograph trailer ADB 975430 + 975431 + 975432) and 4001/02 became Cl.935 numbered 056 (ADB 975848 + 975845 + 975846 + 975847) and 057 (ADB 975844 + 975849 + 975850 + 975851) in the southern region departmental series. With little use 056 was stored at Wimbledon Park until moved to RTC Derby in June 1980 whilst 057 was used as a test bed for bogie designs between 1979-83. 920001 was used to develop Cls.313-315/507/508 though those ultimately only had two sets of sliding doors per side. None survived after withdrawal in the mid 1980s with 920001 scrapped in 1987 and 056/057 in 1990.

# FREIGHT MATTERS

To allow members to keep their copy of **UK Combine Vol.2** as up to date as possible, changes are provided via this spot every month. Please let the Editor Trevor Roots know if you have any amendments or wish pass on any other helpful wagon information.

also see **EASTLEIGH WORKS REPORT** for further updates.

**Out of Store:** 88155, 500192, 964019, 33.68.4909.967-4, 83.70.7792.032-2/042-2/044-0

**Removed from TOPS / For Scrap / Scrapped:** 395223/267, 630029/30/33/34/43/44, 640067/68 640674/685, 967519/537/567

**OTP News:** The Beilhack snowploughs are now being overhauled at Brodie Engineering, Kilmarnock with long-time resident ADB 965578/79 completed and moved to Doncaster West Yard allowing ADB 966576/77 to move to Kilmarnock.

As reported in the May issue, here is a photo of the fire damaged DR 75410 as seen by Michael Warrick on the 24<sup>th</sup> May 2021. in Tonbridge West Yard. As can be seen End 2 is relatively undamaged but End 1 is in a bit of mess.



**FREIGHT NEWS:** The new Newell & Wright Intermodal Terminal created in Tinsley Yard is now operating with GBRf hauling trains from Felixstowe Docks.

## STOCK CHANGES

It is hoped that all major changes recorded below will help you keep the **UK Combine Vols.1 & 2, UK Pocket Book, UK Locomotives and UK Name Directory** up to date, (numerous pool code changes will not be recorded). With industrial locos now included listed by works numbers, square brackets are used below (though not shown in books) to denote these numbers to help differentiate from other numbers eg. [xxxx]. In order to compile as accurate and up to date list as possible, can members please pass on their observations, particularly name changes and multiple unit reformations to the Editor, **Trevor Roots**. Where possible, photos of new nameplates will be included as and when a suitable photo is sourced from members.

### Misc. News:

20901 back in service since summer 2019  
43206/312 have been acquired by LSL for the One to One Museum, Margate  
D1933 (47596) is now in two-tone green livery

60087 has received GBRf livery  
[10220] was scrapped in the end  
168329 has moved to EVR for testing  
377442 is back as a 4 car set from 377342

**New:**

**DMUs:** 51622 HER, 55032 WEN  
142094 EMB, 143601/07/09/16 (LE)

**EMUs:** 701032, 803001/002

**Converted:**

**EMUs:** 769925

**Transferred / (Stored):** (\* preserved)

**D&E Locos:** 08669 (ZB) 08799 BAT  
08846 WB 08870 GY 08924 (BH)  
33053 NLR 43102\* NRS 43047/49 LSL  
43048/89 MRB 43238/295/309/310/320 (EY)  
43272 (BO) 47714 WK  
66956 (BA) 66955/57 (LD)  
[AD251] TAN [390772] TAN [416568] TAN  
[1901] BAT [3870] (WI) [394014] NIT

**Steam: Industrial:**

[1823] PS [3063] BIR

**Units:** 153301/04/15-17/51/52/78 (HT)

153311/76/85 (ZA), 143607/08/10/16/23/24 (LE)  
55801\* (144001) PSG, 77485 (319374) (LM)  
321408/439/443/444 (GCW), 442402/20 (ZN)  
365502/04 (HN), 365510/34 (HE)  
365506/08/14/16/18/20/22/24/32/36/40 (PBN)  
483004\* HOC, 483007\* IOW, 720554 WB  
720555 ZD, 769426 (LB), 769932/39 (BO)

**Coaches:**

**Mk1:** 4702 MNR, 4947 EOR, 35207 MHR  
96212 GY

**Mk2:** 5446 PNP, 9804 (CP)

**Mk3:** 10544\* WRH, 10680\* SDR, 11093 (RR)  
12116\* BAT, 12177-81 (MDB), 11092/99,  
11101, 12176 (CDF), 10406, 12125/54/80 (ZA)  
10242 (BO), 96374 GY

**Mk3 HST:** 40711/40/50, 41099/100, 42128/  
46/98/99, 42238/39 44061/63/80 (EY)  
42029 (EGS), 40701/02, 41095, 41165,  
42109/10 (BO)

**DVT:** 82124/29

**Converted to run on Bio-Fuel:** 66077/85

**New Owner:** 08401/445/72/571/596/615/669/  
724/823/853/873 MY, 41063 LS

**Re-numbered:** 47596 to D1933

319425 to 769925

**Reformed:**

150005 57117 + 52223 + 52117  
150006 57147 + 57223 + 52147  
377442 73442 + 78842 + 78642 + 73842

**Mk3 Coaches Converted to Power Doors:**

ScotRail: 42054/077/154/185

**Steam Status:**

**Ex-BR etc:** 35028 to A 80104 to S

**Industrial:** [469] to A [3059] to A

[3581] to A [3783] to A

**Names:**

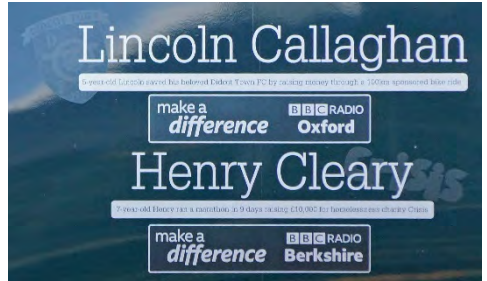
**New:** (\* re-applied)

66794 Steve Hannam  
800030 Lincoln Callaghan / Henry Cleary  
800310 Wing Commander Ken Rees

DR 75011 Andrew Smith



800310 (Colin Pidgeon)



800030 above & below (Spencer Conquest)



below 800030 (Colin Pidgeon)



**Not Previously Illustrated:**



DR 75011 reported Oct 2020 (Colin Pidgeon)



390155 reported May 2020 (Rod Bryant)



60029 reported Mar 2020 (Graham Stockton)



37422 not previously reported (Richard Payling)

**Removed:**

91102 *City of York*  
 91126 *Darlington Hippodrome*

**For Scrapping / Scrapped:****Beaver Metals:** [10220]**EMR Attercliffe:** 42503**Sims Metals:****Beeston:** 319451/455**Hull:** 321365, 11287/89, 12207**Newport:** 91102/13/26/29, 9501, 10595/611  
42159/237/326/554, 44057/75**Raxstar ZG:** LU wagons HW205/208  
317651/59, 77225/71737 from 317654  
Tampier DR 75403 (trailer only)**New Codes:****Location:**

HN Hertford North Carriage Sdgs (T)  
 HOC House of Chilli, Branstone, IoW  
 PBN Peterborough Nene Carriage Sdgs (T)  
 PNP PNP Events, Halesfield, Telford (PS)  
 PSG Platform One Support Group,  
 Huddersfield Sta

**Corrections to new 2021 books:** (as at 1<sup>st</sup> Feb 2021)

(CV1 – Combine Vol.1, CV2 – Combine Vol.2, PB – Pocket Book, L – Locos)

**Errors / Typos:**

p175 CV1, p197 PB

50632 is at DFR

p175 CV1, p200 PB

52044 is at DFR

p91 PB, p90 L

location for 294V is WI

p104 CV2

code for **BXA** in spec box should be + as shown against wagons in list

p60/64/67/142

all references to 170406 (50406/79406) should be 170405 (50405/79405)

## NAMEPLATE PHOTOGRAPHS REQUIRED

Latest updated list of names I have not yet got which considering travel restrictions has obviously grown in the past few months. Please note I only want photos of nameplates in focus, straight and centred side on so be aware of the sloping sides of Cl.91s, Voyagers, Pendolinos etc. Photos supplied of those requested will be shown as and when space permits. (\* re-applied, \$ temporary, x – no longer carried) (~ not straight / square on, + too reflective)

**D&E Locos:**

818 *GLORY*  
 01521 *FLACK ~*  
 08114 *GOTHAM*  
 08611 *Longsight TMD*  
 08641 *Pride of Laira*  
 08648 *Amanda*  
 D3948 *Zippy*  
 08790 x *M.A.Smith*  
 08805 x *Robin Jones 40 YEARS SERVICE*  
 08865 *GILLY*  
 08908 x *IVAN STEPHENSON*  
 20107 *Jocelyn Feilding 1940-2020*  
 20905 x *Dave Darwin*  
 37418 \* *An Comunn Gaidhealach*  
 37510 *Orion*  
 37518 *Fort William / An Gearasdan*  
 45133 \$x *Brian Lockey / Gerald Lambert*  
 47245 *V.E.Day 75<sup>th</sup> Anniversary*  
 56051 *Survival*  
 57313 *Scarborough Castle*  
 60002 x *Tempest*  
 60002 *GRAHAM FARISH 50<sup>TH</sup>*  
*ANNIVERSARY 1970-2020*  
 60096 *Impetus*  
 66109 *Teesport Express*  
 66767 *King's Cross PSB 1971-2021*

66791 ~x *Neil Bennett*  
 73109 *Battle of Britain 80<sup>th</sup> Anniversary*  
 90001 *Royal Scot*  
 90037 *Christine*

**DMUs:**

156483 *William George 'Billy Hardy'*  
 14/01/1903-10/03/1950

**EMUs:**

390151 *The Unknown Soldier*  
 399202 *Theo – The Children's Hospital Charity*  
 802002 *Steve Whiteway*

**Track Machines:**

DR 73113 + *Dai Evans +*  
 DR 75503 *Gill Cowling*  
 DR 73939 *Pat Best*  
 DR 79247 *Roger South*  
 DR 97806 *Andy King Works Delivery*  
*Manager MMT Romford 12<sup>th</sup> Jul*  
*1962-7<sup>th</sup> April 2020*  
 DR 98923+98973 *Chris Lemon*

**Coaches:**

348 *TOPAZ*  
 3229 *SNOWDON*  
 3426 *BEN NEVIS*  
 11074 *Test Coach 1*  
 13306 *JOANNA*

# NEW STOCK



above 701022 + 47749 on 5Q10 Derby  
Litchurch Lane – Eastleigh Depot,  
Winchfield (14.31)  
20<sup>th</sup> May 2021 (Derek Everson)

left 196010 on test,  
Birmingham New Street (06.00)  
25<sup>th</sup> May 2021 (Barry Hayward)

below 701032 + 47739 on Derby Litchurch  
Lane – Eastleigh Depot, Winchfield  
(13.20) 28<sup>th</sup> May 2021 (Derek Everson)



Merseyrail 777002  
on 08.52 6X29 Dollands Moor – Kirkdale CS,  
Rugeley Trent Valley, 5<sup>th</sup> May 2021 (Geoff Bowater)

# LIVERIES

This section will endeavour to show all new liveries / variations, or those existing ones where not carried on the stock before. Liveries that become 'extinct' will also be covered. As with names, it may take a while after the livery application before a photo is sourced from members. New liveries may also be shown in other articles (**NEW STOCK** excluded): 08870 (p35/34), D8568 (p68), 66077/150 (p24), 66794 (p8), 67021/24 (p40), 360102/11 (p13), 96374 (p25)



390044 in full AWC livery, Winwick Jct. (13.29) 10<sup>th</sup> April 2021 (Mike Brook)



left all CI.710s have face mask branding on one set of doors, 25<sup>th</sup> May 2021 (Derek Everson)



above 08703  
Wishaw  
27<sup>th</sup> May 2021  
(Colin Pottle)

left re-liveried EMR  
158774 on 1L08  
11.40 Nottingham –  
Norwich (12.49)  
Whittlesea  
17<sup>th</sup> May 2021  
(Toby Radziszewski)

# REFORMED STOCK

reformed XC 170619 (ex-170519 with centre car  
56631 from 170631) on 1L36 10.22 Birmingham  
New Street - Stansted Airport (12.21)  
Whittlesea 17<sup>th</sup> May 2021  
(Toby Radziszewski)



above 150003  
(52116 + 57209 + 57116)  
on Clitheroe - Rochdale,  
17<sup>th</sup> May 2021

right 150004  
(52112 + 57212 + 57112)  
on 13.22 Rochdale –  
Clitheroe, 19<sup>th</sup> May 2021

both Castleton  
(both Harold Hull)





150005  
(57117 + 52223 + 52117)  
on 09.58 Clitheroe – Rochdale,  
Castleton 18<sup>th</sup> May 2021 (Harold Hull)

*right* 150006  
(57147 + 57223 + 52147)  
on 10.18  
Clitheroe – Rochdale,  
Castleton, 18<sup>th</sup> May 2021  
(Harold Hull)



*left* not previously illustrated since  
reforming from 3 to 2 car 158750  
(formerly 158953) on 2C20  
Exeter St David's - Penzance,  
Dawlish (09.36) 5<sup>th</sup> May 2021  
(Spencer Conquest)

## TRANSFERS

*right* having moved from  
Baron Street Works Yard,  
ELR, 37679 is seen  
awaiting further  
movement at Wishaw,  
27<sup>th</sup> May 2021  
(Colin Pottle)



# ICRS SALES

Orders can be made ideally via BACS, bank details on request from [editor@intercityrailwaysociety.org](mailto:editor@intercityrailwaysociety.org), online via PayPal at [www.intercityrailwaysociety.org](http://www.intercityrailwaysociety.org) or by post from ICRS, Mill of Botary, Cairnie, Huntly, Aberdeenshire AB54 4UD Please make cheques payable to INTER CITY RAILWAY SOCIETY. **Postage to rest of the world will be extra, please request cost BEFORE ordering.**

As volunteers we do our very best to dispatch items as soon as possible, but please allow 21 days for delivery, especially when a new book has just been released, or 28 days for embroidered clothing if not in stock. If you have not received your book after that time please **ONLY** then contact **Trevor / Christine** (see p2 for details)

**UKRS01, UKRS01W & UKRS05** are A6 size, all others are A5 size. All books are wire bound, allowing them to be laid flat, except the original perfect bound version of **UKRS01** (spine version of PB not shown)



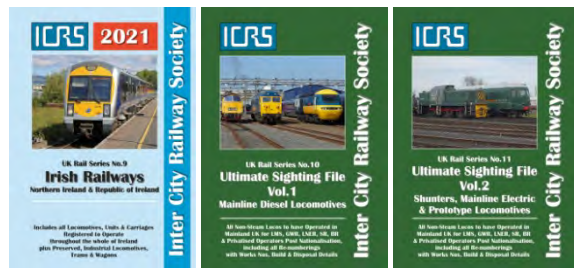
**BOOKS: (Members receive up to 30% discount on ICRS books)**

**Titles:**

**NEW: (UK Wagons now part of Combine Vol.2)**

UKRS01A	UK Pocket Book 2021	<b>SPINE WIRE</b>	A6	1 <sup>st</sup> Feb21	<b>£8.00</b>	£11.00
UKRS01WA	UK Pocket Book 2021		A6	1 <sup>st</sup> Feb21	<b>£8.00</b>	£11.00
UKRS02A	UK Combine 2021 Vol.1 – Locos, Units, Trams & UG		A5	1 <sup>st</sup> Feb21	<b>£11.00</b>	£15.00
UKRS03A	UK Combine 2021 Vol.2 – Carriages, Wagons & TMs		A5	1 <sup>st</sup> Feb21	<b>£10.00</b>	£14.00
UKRS04	UK Name Directory 2021		A5	1 <sup>st</sup> Feb21	<b>£9.50</b>	£13.00
UKRS05	UK Locomotives 2021		A6	1 <sup>st</sup> Feb21	<b>£5.00</b>	£7.00
UKRS09	Irish Railways		A5	1 <sup>st</sup> Feb21	<b>£7.50</b>	£10.00

Size	Updated to	Member	Non-Member
		<b>Prices</b>	



**NEW Lower prices** for current USFs

**PLEASE NOTE P&P**

**must be added separately to book & sundry orders (except fitted PB cover)**

up to £7.50, **£1.50**, £7.51 to £15.99 - **£2.00**  
£16.00 to £59.99 - **£3.00**, over £60.00 - **£6.50**

Details of books and sundries can be found on our website and are shown in **TRACKS** from time to time when released or advertised. Order forms for posting can be downloaded from the website.

**OTHERS: NEW LOWER PRICES**

UKRS10	Ultimate Sighting File Vol.1 – ML Diesel Locos	A5	11 <sup>th</sup> Jul18	<b>£9.00</b>	£12.50
UKRS11	Ultimate Sighting File Vol.2 – Shunters, ML Electric & Prototype Locos	A5	11 <sup>th</sup> Jul18	<b>£8.00</b>	£11.00

**SUNDRIES: (same price for Members & Non-members) Please add P&P to any sundries separately to books**

ICRS branded notebook	75 pages	£2.50	50 pages	£2.00
ICRS pin badge (25mm dia)				£2.50
ICRS printed pen				£0.50
Adjustable clear book covers (A6 fits PB with spine)	A6	£1.00	A5	£1.50
TRACKS Cordex binder (12 issues @ 64 pg: 2015-16) (11 issues @ 64/80 pg: 2019 onwards)			L	£6.00
TRACKS Cordex binder (12 issues @ 32/40/48/64 pg: 2011-14 & 10 issues 32/64/80 pg: 2017-18)			M	£5.00
Polo Shirts: (name & logo) (some smaller sizes in stock / larger sizes on request only)				
(S / M / L / XL / 2XL / 3XL) BLACK / DARK NAVY / NAVY / BURGUNDY / BOTTLE GREEN				£18.00
(4XL / 5XL) BLACK / FRENCH NAVY (DARK) / BOTTLE GREEN				£20.00
Baseball Caps: BLACK / NAVY / BURGUNDY				£10.00

We still have a supply of the original polo shirts in NAVY & WHITE with logo only which can be bought direct from our sales stand for £5.00