

TRACKS



Inter City Railway Society – Jan / Feb 2021



Inter City Railway Society

founded 1973

www.intercityrailwaysociety.org

Vol 49 No.1 Issue 571 Jan / Feb 2021



The content of the magazine is the copyright of the Society
No part of this magazine may be reproduced without prior permission of the copyright holder

- President:** **Simon Mutten** - simonmutten@btinternet.com (01603 715701)
Coppercoin, 12 Blofield Corner Rd, Blofield, Norwich, Norfolk NR13 4RT
- Treasurer:** **Peter Britcliffe** - treasurer@intercityrailwaysociety.org (01429 234180)
9 Voltigeur Drive, Hart, Hartlepool TS27 3BS
- Membership Sec:** **Colin Pottle** - membership@intercityrailwaysociety.org (01933 272262)
166 Midland Road, Wellingborough, Northants NN8 1NG Mob (07840 401045)
- Secretary:** **Christine Field** - secretary@intercityrailwaysociety.org
contact details as below for Trevor
- Chairman:** filled by senior officials as required for meetings
- Magazine Editor:** **Trevor Roots** - editor@intercityrailwaysociety.org (01466 760724)
Mill of Botary, Cairnie, Huntly, Aberdeenshire AB54 4UD Mob (07765 337700)
- Sightings: **James Holloway** - sightings@intercityrailwaysociety.org (0121 744 2351)
246 Longmore Road, Shirley, Solihull B90 3ES
- Photo Database: **Colin Pottle**
- Publications Manager:** **Trevor Roots** - publications@intercityrailwaysociety.org
Publications Team: **Trevor Roots / Eddie Rathmill**
- Website Manager:** **Trevor Roots** - website@intercityrailwaysociety.org contact details as above
- Social Media:** **Gareth Patterson**
- Sales Manager:** **Christine Field** contact details as above for Trevor
- Visits Co-ordinator:** **Tony Whitehead** – anthw884@gmail.com / **Trevor Roots / Christine Field**

Contents:

Officials Contact List.....	2	Graffiti.....	47
Society Notice Board.....	3-7	Irish Railway News.....	8
Events.....	8	Narrow Gauge News.....	41-42
ICRS Sales.....	80	Nostalgia Corner:	
Regular Current News / Sightings:		1960s.....	46
Eastleigh Works Report.....	9-13	1970s.....	66
Franchise / Network News.....	15-22	VoR.....	42-43
Freight Matters.....	77	Odds & Sods.....	8
Infrastructure News.....	62-64	Photo Spot:	
Out & About Sightings.....	48-53	De-icing Trains.....	65
Stock Changes.....	77	NR Test Trains.....	23-25
Liveries.....	77-78	Rail Tour.....	67
New Stock.....	79	Preservation Photo Spot:	
Technology News.....	43	Santa Specials.....	37
Traffic & Traction News.....	27-37	Preservation News.....	13-14
Tram, Light Rail & Metro News.....	64-65	Rail Tour News.....	44-46
Underground.....	66	Railway Globetrotters.....	74-76
Other Feature Articles:		Retro Photo Spot:	
Accidents.....	53	Departmental DMU.....	13
Barry Scrapyard.....	67	RHTT Gallery.....	68-70
BR Sectorisation Liveries.....	55-61	Shunter Spot.....	53
Coach Survey.....	71-73	Signal Box Survey.....	8
Coaching Matters.....	47	Stock Moves.....	38-40
Gone But Not Forgotten.....	26	WD Austerity 0-6-0ST Loco Survey - Update....	66

Front Cover Photo: LNER 800102 trapped by the closure of the mainline south of Aberdeen had to be sent south over the top via Inverness, passing Huntly at 13.19, 20th January 2021 in suitably seasonal weather.

£3.00 where sold separately

Printed & distributed by: Oxuniprint Ltd, Unit 10, Oxonian Park, Langford Locks, Kidlington, Oxford OX5 1FP

SOCIETY NOTICE BOARD

Editor's Comments: It has been absolutely manic since mid December 2020 attempting to compile six books (seven counting the two near identical Pocket Book versions) and get this first issue of 2021 out on time and all while a few other 'minor' events appear to have been taking place !! In the last week of January I was juggling the above whilst emailing constantly to three printers (two for books and one for **TRACKS**), photo contributors to book covers and **TRACKS**, book proof readers and keeping on top of the orders coming in at an average of 10 a day. If I was a computer I would probably be showing an error message, as my eyes and brain have nearly had it. One very good bit of Society news that we have now gone past and sustained the milestone of 1400 members. So a big thank you to those who have recently joined and to those stalwarts who have stuck with us during all the uncertainty of the past year.

Well the start of 2021 has certainly been lively with a new variant of coronavirus causing chaos and necessitating the return of a national lockdown, albeit done separately via each devolved country, which started in the first full week of January 2021. It is likely to continue until late spring whilst the successful vaccination programme is rolled out and means many are again temporarily trapped in their homes. At least at the end of 2020 we finally left the EU and a Brexit trade deal was agreed so we can move on and hopefully flourish as we come out of the pandemic. Can anyone now say it wasn't a good idea with the recent antics of a bungling bureaucratic organisation now spitting its dummy out because the UK is doing far better with its vaccination programme. Whatever you think of the government they got in early with orders and backed the right vaccines and offered help. I bet a few EU countries are thinking we did the right thing leaving. As for that paranoid maniac in the US inciting a mob to storm the Capital, well what can you say except good riddance. It just shows democracy only works by the deeds and words of good leaders and the ability to sway a crowd in the wrong direction by repeatedly spreading misinformation is how dictators are born. It is unbelievable how so many have been brainwashed into still believing in outlandish conspiracy theories. Somehow the democratic world now has to act to combat the evil side of social media. Dangerous insidious conspiracy theories do not have to be protected as free speech. At least Nicola banned him from flying here to escape his humiliation of attending Joe Biden's inauguration. Politics aside what a difference his uplifting speech was compared to his successors often incoherent egotistical ramblings. Back to the UK and it would seem most if not all of our members over 80 should have by now had their jags (jabs if you live south of the border) and my Mom (86) is now the proud 'owner' of her jag to go with her umpteen mobility scooters and walkers !! With over 70s now also getting their invitation to vaccinate I urge all members to take the opportunity when it arises as it is the only way out of this pandemic. It will make life easier to once again plan for visits and galas...as they say, patience is a virtue.

The pandemic has certainly continued to change the railway scene by accelerating the changeover from older stock with quite a few 'end of era' moments. Cl.142/144/332s are no longer in service with 143s not long to go. In a planned move but what could be their last if passengers don't return in numbers, Cl.91s bowed out of service on the 15th January 2021. They should return but who knows so is this the end of the last loco hauled era on the ECML ? Not a topic of much talk but with the ex-LNER Mk4s not yet in operation with TfW and the Blackpool service cancelled, there are now currently no Mk4s running, who would have thought that only a year ago. In fact there are now no Mk3s or Mk4s in regular passenger service on the East or West Coast Mainlines. The use of Mk3s is also declining on the network elsewhere and in producing the 2021 books I did some calculating to find that approx there are 700 Mk3s (including DVTs) left (225 loco hauled, 476 HST) of which only 319 are in service with 329 having been scrapped in 2020 but thankfully those now preserved have more than doubled with 60 being saved. Of the almost complete Mk4 fleet at the start of 2020, 42 have been scrapped with the remaining 245 now all in store. On the unit side further examples or the first from certain classes have been scrapped, Cls.142/143/144/315/317/321/332 though on the positive side, though not for comfort, more new classes are coming on stream or being created as demonstrators of new technology. At least GWR, XC and ScotRail have faith in the comfortable Mk3s to have refurbished them to guarantee seeing them for some years to come. The venerable Cl.86s are down to the last two in service with FL so the sight of pairs is all but over, but again there is a promise they will return.

One example of how devastating the loss of passenger traffic can be is that Eurostar is struggling to survive. Not affected directly by Brexit the flagship of international rail travel between the UK and

Europe has been brought to its knees by the pandemic. The current lockdown has reduced traffic by 99% and there are now only two trains per day, one to Paris and one to Brussels, crazy especially as it carried 75% of all London – Paris business passengers. Whilst attention and financial help has focused on the plight of the airline industry no-one seems worried we might lose a more environmentally friendly form of long distance travel which will be needed to connect up to HS2 in the future. It also completely sends the wrong message with the focus very much on climate change going forward and the upcoming Cop26 Conference in Glasgow. It doesn't help that some government departments are still bashing public transport and especially rail travel when it is proven to be as virus free as can be. The real problem is actually the passengers themselves with non compliance on mask wearing by passengers with 128,000 incidences alone on London Transport so far. We have got to be careful and proactive to prevent the short term fire fighting obscuring or completely derailing the longer term decarbonisation goals.

In another example of short sighted Government owned organisations failing to get onboard with the wider campaign to re-open abandoned railway routes, get people out of cars and generally contribute to joined up thinking of modal transport shift across all stakeholders, Highways England (HE) are planning to destroy a substantial number of railway structures under their care. They manage the 3200 structures of the Historical Railways Estate which includes tunnels, bridges and viaducts which could all be used to carry or span future routes, be they cycling, walking or heritage railway extensions. In wanting to reduce their liability they are planning to reduce the number of structures by 10-15% and in what seems a bizarre move their budget is to be quadrupled to cause this destruction instead of trying to ascertain if other interested parties could take them on. Many potential schemes would be wrecked with routes severed and would require more money to undo the damage if even possible. Have we not learned the lessons of Beeching and realised removing an asset just to save money is ultimately denying future flexibility. The problem seems here that the consultancy firm Jacobs has proposed this work be done but their narrow brief is only to their client HRE and cannot encompass the wider needs of other interested parties. The other issue is HE is using permitted development under the cover of it being to prevent an emergency arising so circumventing scrutiny through the normal planning process so not allowing objections or even knowledge that this work is to undertaken until too late. A group of engineers, cycling campaigners and greenway developers has been set up to combat HE as they feel that no assessment has been made to assess the strategic value of structures under threat in the provision of future transport needs. If you want to add your voice go to the change.org website where you can sign a petition. It is a long address but the site is for all petitions and there doesn't appear to be a search option. We'll try to put a link on our social media sites.

https://www.change.org/p/highways-england-protect-our-railway-heritage-from-highways-england-s-wrecking-ball?utm_source=share_petition&utm_medium=custom_url&recruited_by_id=be72d160-42bd-11eb-a3fc-8fc851075b36

Another Atlantic storm, Christoph this time, has caused widespread damage to the rail network over the period 20th-21st January 2021 and in particular Wales and the Conwy Valley yet again. Several lines are closed whilst repairs are carried out. Basford Hall Yard suffered unusually from flooding adjacent the maintenance shed.

With many instances of mainly youths disobeying pandemic restrictions the railways have been the target of irresponsible behaviour. A Tik Tok video of a car parked across a live level crossing and families rambling along tracks. Worse still criminal damage was caused by a New Year party at the Lancashire Mining Museum, Astley Green where benches were burnt on a bonfire placed across the tracks damaging the permanent way.

As you will see below our new 2021 books are available or about to be released. Approx 1000 more locos have been added with a whole new section of preserved / industrial diesel locos and more gauges added to the steam loco section. These are now by far the most comprehensive spotting books you can buy and without costing the earth or having to buy several to cover what we have in a single book, so make sure you get your copies ordered.

Re my **ODDS & SODS** article in the Dec issue it would appear not many have done the length and breadth of the UK as I have not a dickie bird, not even a 'crow' in response. I wonder how many have done an All Line Rover. My epic 14 day one in 1976 is pencilled in for a later issue and it makes you realise how much unrestricted travelling is missed.

Finally for those who model railways, the formation below proves the point that you can run anything together !!



above 43066 + 91128 + DVT 82115 + Mk3s 10237, 11074 + 90035 + Mk3s 12091, 12092, 11090 + 92122 + 43054 on an MML DATS test train 1Q16 12.20 Kettering - Bedford, Radwell (12.39) 19th December 2020 (Toby Radziszewski)...6 different liveries on 5 different types of stock


Apologies for yet another local Huntly photo on the front cover but as you will understand this month has seen the least variety of photo locations submitted with the limiting lockdown. However the working of a diverted LNER Azuma over the top combined with snow was worthy of using and actually apart from the masked nose of 800321 in July 2020 I have not previously shown a full CI.800 on a front cover.



Errata: December 2020: At the top of p58 the caption to the worksplates is a bit garbled as it should read: worksplates from 743730 (prior to moving seen at Cranmore, ESR) & 743835 (wagon photo overleaf). In **OUT & ABOUT** on p41 in Ralph Wainwright's visit to Leeds Midland Road on the 7th Nov the last CI.70 number should be 19 and there shouldn't be a 5 in front 66546 on the 15th Nov. In Frank Barrington's visit to Leeds Midland Road on the 7th Nov the numbers should read 66506/25/31/, 70009/19. The CI.47 on p58 is 47579.

Sales: The new 2021 books are about to be released with printing starting at the same time that this issue of **TRACKS** also went to the printers, that's three separate printers involved. I have said it before but with these books having been improved yet again, have to be amongst the best on the market and certainly some are unique in format and now content. Hopefully you will confirm that with your purchases. I thought last year was good for pre-orders and that was in the strange world pre pandemic but the orders for the 2021 books have exceeded expectations. Considering we are far from being able to get out and actually see the stock that is covered in the books that makes all my efforts worthwhile....and Chris's patience with me glued or should it be chained to the computer for weeks on end.

Though a proverbial rod for my back I was determined to press on with adding yet more stock to the Combines / Pocket Book even though the changes involving new stock, scrappings and withdrawals has been a nightmare to keep track of and is still ongoing. So continuing on from adding industrial steam locos I have added all other standard gauge industrial locos be they diesel, electric or battery covering those either still in industrial use or now preserved. Included are the various depot movers. I also wanted to include all the other large steam locos in the UK, mainly WD and overseas imports but in compiling the database it became clear that it meant gauges other than standard were involved as some large locos are actually narrow gauge. So in order to provide a truly comprehensive list I listed

all locos from the various broad gauges down to a cut off point of 2'-7" narrow gauge, a total of 1086 (110 steam, 976 diesel etc). This allowed long standing non standard gauge original systems to be included eg Snowdon Mountain Rly and Isle of Man railways. Having gone this far it is proposed that the remaining approx 1800 narrow gauge locos be included hopefully in the 2022 editions so truly providing all narrow, standard and broad locos of any type found in the UK, IoM and channel islands in a single book. I have always felt we needed a book to record all sightings and it was always a case before of what was left out and then where do those locos get recorded. For now I hope you approve of what has been added which also includes the Tram systems on the Isle of Man. There may well be a few glitches with all the new listings so please report any errors or missing items. The number of locomotives in **UK Locomotives** (128 pages) is now 3 x that which are covered in the equivalent Platform 5 Locomotives Pocket Book (104 pages) and for a similar price.

 <p>UK Rail Series No.1 UK Pocket Book</p> <p>All Diesel & Electric NR Registered, Private Owner & Preserved Locomotives incl Misc, Eurotunnel & Exported All Std Gauge Preserved Steam plus Preserved & Industrial Diesel / Electric Locomotives All NR Registered & Preserved Multiple Units / Railcars All NR, Dept, Internal User & Preserved ex-BR Carriages Tram, Light Rail, Metro, Underground Systems including Locomotives Large Track Machines / Snowploughs incl Preserved</p>	 <p>UK Rail Series No.1 UK Pocket Book</p> <p>All Diesel & Electric NR Registered, Private Owner & Preserved Locomotives incl Misc, Eurotunnel & Exported All Std Gauge Preserved Steam plus Preserved & Industrial Diesel / Electric Locomotives All NR Registered & Preserved Multiple Units / Railcars All NR, Dept, Internal User & Preserved ex-BR Carriages Tram, Light Rail, Metro, Underground Systems including Locomotives Large Track Machines / Snowploughs incl Preserved</p>	 <p>UK Rail Series No.5 UK Locomotives</p> <p>All Diesel & Electric NR Registered, Private Owner & Preserved Locomotives incl Misc, Eurotunnel & Exported All Std Gauge Preserved Steam plus Preserved & Industrial Diesel / Electric Locomotives Tram, Light Rail, Metro & Underground System Locomotives</p>
--	--	--

 <p>UK Rail Series No.2 UK Combine Vol.1 Locos, Units, Trams & Underground</p> <p>All Diesel & Electric NR Registered, Private Owner & Preserved Locomotives incl Misc, Eurotunnel & Exported All Std Gauge Preserved Steam plus Preserved & Industrial Diesel / Electric Locomotives All NR Registered & Preserved Multiple Units / Railcars Tram, Light Rail, Metro & Underground Systems including Locomotives</p>	 <p>UK Rail Series No.3 UK Combine Vol.2 Carriages, Wagons & Track Machines</p> <p>All NR Registered, Departmental, Internal User & Preserved ex-BR Carriages All NR Registered Wagons incl UK based International RIV & Internal User Wagons Large Track Machines & Snowploughs incl Preserved Channel Tunnel Shuttle Wagons, Underground, DLR, & T&W Metro Wagons / Engineers Stock</p>
--	--



UK Rail Series No.4
UK Name Directory

All Current & Previous Names Carried
 on Network Rail Registered
 & Preserved / Privately Owned Rolling Stock -
 Diesel & Electric Locomotives, Multiple Units,
 Coaching Stock, Departmentals,
 Track Machines, Light Rail, Trams
 & Underground

Inter City Railway Society



UK Rail Series No.9
Irish Railways
 Northern Ireland & Republic of Ireland

Includes all Locomotives, Units & Carriages
 Registered to Operate
 throughout the whole of Ireland
 plus Preserved, Industrial Locomotives,
 Trams & Wagons

Inter City Railway Society

For interest to get all the stock we now cover in two Vols of the Combine (£21) or one Pocket Book (£10) you would have to get four PBs (£26.50) or Combine (£23.50) + Metro & Light Rail Systems (£17.95) + Preserved Locos (£19.95) from Platform 5, that's four books min at a total of £61.40. We may not have all the pretty pictures, as that is what **TRACKS** is for, I rest my case !!

Membership Matters: New Members: (39) – a warm welcome to you all.

(* ex-members re-joined) (AFC – Additional Family Child, AFA – Additional Family Adult)

Gary Adams (Bridgend), **Geoffrey Armstrong*** (Gateshead), **Martyn Bale** (Porthcawl), **Nigel Berry** (Huncoat), **Sylvester Booth*** (Pontefract), **Norman Branch** (Woking), **Chris Carter** (Rugby), **Jeremy Carter** (March), **Paul Crilidge*** (Macclesfield), **Matthew Chaplin** (Stowmarket), **Keith Crombie** (Prestonpans), **John Cruickshank** (Aberdeen), **Keith Faulkner** (Falmouth), **John Fay*** (Barrow-in-Furness), **Paul Fowler** (Camberley), **Steve Fox** (Swindon), **Richard Freeman** (Washington), **Stephen Gee** (Rugby), **Kenneth Goodman** (Westbury), **Michael Haley** (Lichfield), **Alan Head** (Andover), **Martin Holt** (Empingham), **Donald Horsfield*** (York), **Richard Howe** (London), **Stewart Huddleston** (Long Eaton), **Norman Hustwitt** (Edware), **David Jackson** (Nottingham), **David Knight**, (Stoke-on-Trent), **Raymond Knowles** (Cheltenham), **Jeffrey Korn** (London), **Brian Munn** (Blackpool), **Paul O'Dell** (Sudbury), **Robert Smith** (Sheffield), **William Smith** (York), **Alan Taylor** (Darwen), **Brian Walker** (Oldham), **Richard Watkinson** (Princes (Risborough), **Tony Williamson*** (Wrexham), **Ian Yarde** (Warminster)

Obituary: Sadly we have recently lost six members, Allan Duckworth (72) from Tamworth, Des Ireland (68) from Lancaster, David Brown (82) from Stockport, William 'Ray' Taylor (77) from Bournemouth, Ray Lee (74) from Dukinfield and Alan Drake (76) from Norwich. It is not known if coronavirus claimed any of them but condolences go to their family and friends.

Standing Orders: PLEASE, PLEASE can all those with SOs amend them to the new fee of £20 asap regardless of when your renewal is due...you have the time !!! Colin is having to chase up far too many whose renewal is coming in at the previous rates to then request the outstanding difference. The convenience to members is far outweighed by the admin if not used correctly and if not rectified will result in the facility being removed...or the members !!

Society Magazine TRACKS:

TRACKS is distributed direct from the printers to members in a clear compostable wrapping with an address carrier sheet (reverse printed with a Renewal / Reminder form if appropriate). If any member fails to receive their copy after one week from the estimated delivery date below then please contact the Editor. For current info during the month refer to the TRACKS page of our website.

Next issue: Mar 2021 The latest date for articles / info is **Fri 26th Feb 2021**
delivery to members: **PDF Mon 1st Mar 2021** with **Print** copies posted out 7 days after pdf
for updates please check the **TRACKS** page on the website

Magazine Contributors: Thanks to **Chris Addoo, Scott Aitken, Frank Barrington, Nigel Benning, Keith Blackman, Ray Bond, John Brace, Malcolm Castell, Paul Clifton, Spencer Conquest, Sean Davies, Dennis Dey, Martin Evans, Derek Everson, Tony Falloon, Paul Fuller, Iain Gardiner, John Goodyer, Alan Hardcastle, Amber Holloway, James Holloway, Geoff Hope, Nigel Hoskins, Harold Hull, David Inett, Peter Jackson, Colin James, Bob Johnstone, Alan Jones, Andy Jones, Terry Lea, John Lewis, Bradley Marshall, Ian Mcalpine, Stuart Moore, Gary Mutten, Keith Partlow, Colin Pidgeon, Colin Pottle, Davy Pratt, Toby Radziszewski, David Rice, Adrian Roberts, Paul Rosser, Eric Salisbury, Ray Smith, Lee Spenceley, Paul Sumpter, Aidan Turner, Andrew Turnidge, Ralph Wainwright, Michael Warrick, Carl Watson, David Williams, Blake Willimott, Bob Zepin & Trevor Roots.** We are sorry if anyone has been missed. Photos not credited are by **Trevor Roots.**

EVENTS

A new programme for 2021 will only be compiled when Government guidelines allow mass gatherings and companies can safely accept visits which may now all depend on vaccination programme. This may therefore not be for several months so watch this space and keep your fingers crossed we can get something organised in 2021 sooner rather than later.



ODDS & SODS

The Parry People Mover demonstrator, 12 (999900) has moved to the SVR to conduct trials as seen left at Highley at 13.13 on the 26th December 2020 by Sean Davies.

SIGNAL BOX SURVEY

A raft of manual signal boxes have or are about to close in Lincolnshire. Ferryhill and Norton West closed on the 30th January

2021 with the former to be used as a welfare facility and the latter demolished. The following weekend should see Billingham, Greatham, Norton Station, Norton East, Norton South and Ryhope closed. The Stillington branch is closed until the 10th February 2021 when York ROC takes over control.

IRISH RAILWAY NEWS

Due to the complete loss of international passengers through the pandemic stopping tourism, the Grand Hibernian operated since 2016 by Belmond has ceased operating with all ten Mk3 coaches to be stored pending renovation. Dedicated loco 216 has returned to more mundane duties.

EASTLEIGH WORKS REPORT

by **Carl Watson** (with assistance from **Norman Smith**)
for the period 1st December 2020 to the 31st January 2021
(All photos by Carl Watson unless otherwise shown)

Locos:

- 05/12 57303/312 took 57305 and an HST Barrier Vehicle to Derby RTC (see Coaches below)
- 05/12 47749 came in from Eastleigh East Yard for new wheels.
- 09/12 LSL Midland Pullman 43055/40802/41176/41108/41162/41059/40801/41182/41169/44078/43046 left for Crewe HS.
- 10/12 66847 came in for fuel.
- 11/12 73136 left for Tonbridge West Yard.
- 14/12 57312 arrived from Bournemouth T&RSM with 6 barrier vehicles + 442404 for an overnight stay and then left for Wolverton Centre Sidings the following morning.



- 18/12 LSL Midland Pullman returned from Crewe.
- 21/12 59003 brought in Translator Set T7 64664/64707 from Eastleigh Yard.

- 21/12 73961 t&t 73965 were on and off site with a NR test train before leaving for Tonbridge West Yard two days later.
- 23/12 66848 and 66849 visited for fuel.



- 24/12 66847 and 66848 visited for fuel.
- 29/12 66847 and 66850 visited for fuel.
- 30/12 59003 departed following an Exam.

Units:

- 04/12 57303 brought in 317503/666 from Ilford EMUD (see above).
- 04/12 57312 brought in 319010 from Loughborough Brush (see above)

- 08/12 57312 brought in 319011 (see above) and 4 x Barrier Vehicles from Long Marston (see Coaches below)

15/12 NR 313121 arrived from Ferme Park Rec Ln GBRf for maintenance.

Wagons: Wagon Trips in/out during the month were:

04/12 66082 brought in 87.4333.015-3 from Southampton Eastern Docks and returned there with 87.4376.011-4

11/12 66094 took 87.4384.022-1 to Southampton Eastern Docks

16/12 66726 took 643023/024, 70.6791.083-8, 70.9594.003-4/007-5 to Eastleigh East Yard

18/12 66176 brought in 87.4376.000-7, 87.4908.611-6/615-7, 87.4909.386-4 from Southampton Eastern Docks and took back there 87.4376.005-6

18/12 66019 arrived with 93371/394/450/470/486 from Dollands Moor



Coaches:

05/12 57303/312 took repainted 6344 to Derby RTC (see above).

08/12 57312 brought in 6330/6338/975875/977087 from Long Marston. 6330 stayed for an overhaul and the remaining three were taken to Derby RTC the following day by the same loco.



HW205 (11/12/20)

Underground: Arrivals of LUL Stock for this period: GP904/GP921/GP940/HW205/HW208/HW212

Scrapping: Raxstar have disposed of the following EMUs during December:
317656, coaches 77235, 71749, 77215 from 317664

Locos:

- 04/01 D6515 arrived from the Swanage Railway (seen right on 07/01).
- 05/01 66850 came in for fuel.
- 08/01 66752 took Translator Set T7 64664/64707 to Doncaster Works Wagon Shops.
- 08/01 66847 came in for fuel.
- 11/01 66846/850 came in for fuel.
- 15/01 37884 came in from Ilford for a unit move the next day.
- 18/01 73213 brought in two FEA flat wagons from Tonbridge West Yard and stayed to get new wheels (see Wagons below)
- 18/01 67023 t&t 67027 were on and off site with a NR test train before leaving for Tonbridge West Yard three days later.
- 19/01 37612 t&t DBSO 9703 were on and off site with a NR test train before leaving for Hither Green a week later. The train returned on the morning of the 29th and later that evening made it's way back to Derby RTC.



Units:

- 12/01 701016 came in from Eastleigh Arriva Depot (see opposite top)
- 14/01 701007 left for Eastleigh Arriva Depot and 701014 came in from there (see above).
- 16/01 37884 took 319373 to Castle Donnington EMDC for demonstrations. The unit was returned two days later from Birch Coppice GBRf by 57312.
- 21/01 37884 brought in 317514/653 from Ilford.



above left 142003 prepped for repainting 28/01

Scrapping: Raxstar have disposed of the following EMUs during the month. 317503/666, coach 62861 the last from 317664, coaches 77206/62852 from 317655

right 62852 (317655) being scrapped 28/01



left 77063 (317503) in the scrap area 12/01

Coaches: Riviera Trains have sold 3066/3068/21272 which were moved to Didcot by 66187 on the 27/01 for onward movement by road to ESR seen passing Reading West (12.05) (Spencer Conquest)



Underground: Departures of LUL Stock for this period: GP925/GP933

Wagons: Wagon Trips in/out during the month were:

07/01 73961 brought in 643001/002 from Tonbridge West Yard.

18/01 73213 brought in 643003/004 from Tonbridge West Yard.

22/01 66165 brought in 87.4375.005-7/041-2 from Southampton Eastern Docks and took back there 87.4333.015-3, 87.4908.611-6/615-7, 87.4909.386-4.

26/01 56094 brought in 78211/263/265/266/267/
269/272/275/277 from Sinfin Sidings.

30/01 66548 brought in some Freightliner wagons from Crewe Basford Hall (full details next time)

RETRO PHOTO SPOT: DEPARTMENTAL DMU

DMBSL ADB 975426 (79098): Built in 1956 this Swindon Inter-City DMU was allocated to Scotland from August 1956 where it was withdrawn in October 1972. In Jul 1976 it entered departmental service as a mess coach in the Bletchley TMD breakdown train and received a unique livery as can be seen below at Westhouses Depot by Derek Everson on 23rd July 1977 most probably shortly after it was acquired by the CE Dept. In 1982 it was sent to Wolverton Works for stripping prior to being scrapped by burning at Mayer Newman, Snailwell on the 29th June 1982.



PRESERVATION NEWS

A former girls school has been turned into a new central library and museum in Doncaster and took delivery of 4-4-2 GNR Atlantic 251 from the NRM on the 24th January 2020. To be known as the Danum Gallery, Library and Museum it will house two locos, the identity of the other yet to be announced.

The London Transport Group has acquired two surplus Cl.483 EMUS, former 1938 London Underground Stock, from the IoW Island Line which were withdrawn from service on the 3rd January 2021. They will be based on the EOR and will eventually be converted to battery operation supplied by Clayton Equipment. Due to space constraints at EOR some vehicles may have to be stored elsewhere in the short term.

The boiler of 4-6-0 4930 'HAGLEY HALL' was successfully steamed on the 7th December 2020 bringing the expectation of the loco back in steam on the SVR during 2021 after 34 years out of service.

The Weardale Railway has been granted a Transport & Works Act Order allowing it to run service trains over the line from Bishop Auckland. Several engineering trains will be operating over the winter to bring the track and structures up to standard before operation begins hopefully at Easter 2021.

The third Pacer to join the MNR fleet, 144018, which arrived on the 9th December 2020, disgraced itself after arrival as centre trailer 55854 rolled away from Dereham station at 16.20 on the 10th December 2020 smashing through the level crossing gates coming to rest across Norwich Road. No damage was sustained to road vehicles or people.

Dean Forest Rly (DFR) by Nigel Benning: On 29th November 2020, the Dean Forest DMU Group purchased Class 108 DMU vehicles DMCL 50632 and DMCL 52044 from the Gwent DMU Group.



Vehicle 52044 left Furnace Sidings, PON by road, on Monday 21st December and was first taken to the St. Philips Marsh Depot, Bristol for tyre turning. Vehicle 50632 followed on Tuesday 22nd. On Wednesday 23rd December, both vehicles were collected from St. Philips Marsh and delivered to Lydney Jnct, DFR (see above). It was an horrendous time for the move having had 3 days of rain causing flooding on many roads in and around the Forest.

It is planned that 52044 will be stripped for spares and scrapped during the first half of 2021. 50632 will initially be used for storage, whilst a decision is made on its future.

FRANCHISE / NETWORK NEWS

First Group run AWC and SWR will move to new contracts following the ERMs which expire in March 2022 and March 2021 respectively.

Further derogations have been given to operate non compliant stock until the 31st May 2021. These are: EMR - six former LNER HST sets NL51/54-58 plus six spare Mk3s plus six Cl.153s. TfW – thirteen Cl.153s (see below) plus all Cl.143s, N – eighteen Cl.153s, GA – nine Cl.317s and the majority of the Cl.321s.

The new lockdown has seen passenger numbers fall again and open access operators GC and HT have suspended operations for a third time. GC is anticipating restarting on the 1st March 2021 but no commitment from HT. Most TOCs have introduced reduced timetables.

TfW: Work on building the Cl.398 bodyshells for the South Wales Metro is proceeding at the Stadler facility in Poland.

Thirteen non-compliant Cl.153s have been reclassified 153/9 whilst they see out their derogation until May 2021. They can only run with their toilets locked out of use coupled to other compliant stock.

AWC: The two face mask wearing Pendolinos, 390042/122, have lost them following application of the AWC livery to the driving cars.

CR: The intended reintroduction of a slam door coaching set using eight ex-GA Mk3s during peak hours from Marylebone has been dropped due to the downturn in commuters. They are currently at Eastleigh for refurbishment so presumably will be moved into store.

CS: Former Nightstar Mk3 generator 96371 has move to Polmadie Depot to provide pre heating for CS Mk5 sleepers.



above 47739 t& 47727 hauling
ex-LNER Mk3s 41090, 41044,
40737, 42127, 42063, 42064, 42065
and 44045 + barriers 6393, 6394
on 5Z48 Gascoigne Wood - Sims
Metals, Newport,
Stoke Orchard (13.51)
14th January 2021 (Terry Lea)



EMR: 43047 t&t 43049 were the last original EMR VP185 engined Cl.43s in charge of an EMR service on the 12th December 2020. With the latest lockdown reducing passenger

numbers again HST diagrams were reduced to two from the 18th January 2021 and the sets reduced to 2 + 6. This has released more Cl.43s and Mk3s to head for storage and Mk3s for scrap.

above left ex-LNER 43314 + 43308 + 43318 + 43296 on OL47 12.30 Neville Hill - Ely Papworth Sdgs, March (15.22) 22nd December 2020 (Toby Radziszewski)

The maintenance of the CL.360 EMUs transferring from GA is to undertaken at Bedford Cauldwell with overnight servicing at Cricklewood and new sidings to be built at Kettering. Testing has begun as seen below



360110 + 360114 on 3Y55 Kentish Town - Kettering Stabling Sdgs pass through the recently opened new platform 4, Wellingborough (17.19) 22nd January 2021 (Colin Pottle)

GA: The first Cl.321s have been scrapped with one each of 321/3 and 321/4, 321357/446



321357 + 321446 + 37884 on Clacton - Sims Metals, Newport, Reading (13.17) 26th January 2021 (Spencer Conquest)

The first Cl.720/5 entered service on the 26th November 2020 with 720515 + 720517 operating the 16.10 Southend Victoria – London Liverpool St. These EMUs will eventually replace the Cl.321s.



720517 + 720515 on 5Q56 09.28 Ilford - Norwich for 3 days of testing, Ipswich (10.57) 14th December 2020 (Keith Partlow)



745008 the 20th and last CI.745 entered service on 1P13 07.03 Norwich – Liverpool St, seen here on the later 1P35 (12:00), Ipswich (12.39) 11th December 2020 (Keith Parlow)

GWR: The CI.143s were withdrawn from service with the start of the new timetable on the 12th December 2020 with CI.166s taking over their duties from the 13th. 143612 being the first to enter preservation with VBR though temporarily stored at Wishaw.

By removing one coach from two HST Castle sets and utilising its four spares, GWR was hoping to make up two additional 5 car sets. The last of the CI.43s to be refurbished have departed Wabtec with another set of power door fitted Mk3s (see below).



57305 + refurbished Castle HST CI.43s 43022 + 43029 + 43010 + Mk3s 49114, 48140-42 on Wabtec, Doncaster - Laira, Worcestershire Parkway (15.11) 17th December 2020 (Sean Davies)

right one of the last services in the hands of CI.332s, 332008 Paddington (09.24) 14th December 2020 (Sean Davies)

HEX: The dedicated CI.332s were withdrawn in December 2020 with several sent straight from working for scrapping, the first to go though was the cannibalised 332014. Services are now in the hands of the twelve modified CI.387/1s.





above 66758 t&t 66748 + 332012 + 332005 on 6X33 OOC - Sims Metals, Newport, Swindon (12.09)
8th December 2020 (Colin Pidgeon)

below 66704 t&t 66724 + 332010 + 332007 on 6X02 OOC - Sims Metals, Newport, Didcot
(11.05) 12th January 2021 (Spencer Conquest)



above 66745 t&t 66739 + 332003 + 332002 on 6X32 OOC - Sims Metals, Newport, Higham
(14.20) 15th December 2020 (Terry Lea)

LNER: With an abundance of currently underused Azumas, the Cl.91s + Mk4 coaches were temporarily laid off from the 15th January until June 2021 though this may be in doubt. This was partly due to the downturn in traffic but also due to the ECML closure to allow the Werrington Jct dive-under to be completed. In this period all maintenance will be transferred from Bounds Green to Neville Hill with sets being turned by running via Newcastle, the final runs were in the last week of January. The final service runs were operated by 91105/24/30 with 91127 + set moving to Belmont Yard where other sets not going to NL have also been stored. The photos below on a rare snowy day in London may be the last of Cl.91s on Bounds Green and were taken by member Ray Bond who is a Technical Support Officer with Hitachi.



above 91106 in the snow

left 91119 inside the Depot

both Bounds Green
23rd January 2021 (Ray Bond)

Ray was instrumental in the
retro livery applied to 91119

below one of the last to leave
the Depot on the 29th was
DVT 82205 in its special
'FLYING SCOTSWOMAN'
livery, Bounds Green
23rd January 2021 (Ray Bond)





above also being transferred is barrier coach 6353 to Harry Needle, Worksop, Bounds Green, 23rd January 2021 (Ray Bond)



above now pointing south 91101 t&t DVT 82213 is seen returning south having turned at Newcastle on Bounds Green - Doncaster Belmont Yard, Overton (13.09) 26th January 2021 (David Rice)
below having headed north 91114 t&t DVT 82214 is seen returning south on Bounds Green - Doncaster Belmont Yard via Newcastle, Overton (12.51) 28th January 2021 (David Rice)



SET: Ordered by SWT by the then incumbent SWR franchisee, FirstGroup when taking over in April 2017 deemed them surplus to requirements. The first of the 35 CL.707 EMUs have moved to SET with 707003/004 heading east on the 10th January 2021 from Wimbledon to Ashford with 707005/006 following to Slade Green. These four sets will allow driver training ahead of the next planned moves in April and July. The class will be based at either, Ashford, Grove Park or Slade Green Depots.

SWR: The Island Line Cl.483s bowed out on the 3rd January 2021 with 483007 having the honours having just returned to service following a 3 year overhaul and will stay on the island to be preserved at the IoW Steam Rly. The two other sets recently in service both gave up the ghost 483006/08 with both to be preserved at the EOR having been acquired by the London Transport Traction Group.

NO: All Cl.142/144 Pacers were finally withdrawn from service in late November with 142004 paired with 150225 taking the honour of operating the last service on the 15.15 Manchester Victoria – Kirkby on the 27th November 2020. All the remaining sets have moved from Newton Heath to Heaton.



above 142094 + 142071 + 142058 on NH - HT, The Sidings, Shipton-by-Beningbrough (14.14)
8th December 2020 (David Rice)

WMT: 730101 has moved to the Czech test rack at Velim for testing.

ERS: Eastern Rail Services has moved its 15 ex-CS Mk2 & 3 coaches from Wolsingham, Weardale Railway to its new storage sidings at Great Yarmouth (see below)



47593 + 10501, 10600, 6707, 9802, 6704,
9807, 10502, 1210, 9805, 9804, 6702,
6700, 10699, 10212, 8909 on
Wolsingham – Gt Yarmouth Sdgs,
March West Jnct (14.21)
21st December 2020 (Keith Partlow)

DRS: 20303 dumped in Holgate Yard, York in October 2019 has finally moved to Crewe Gresty Bridge.

Ten of the 23 strong Cl.37 fleet are to be sold with 13 being kept running until 2025 though this is flexible depending on traffic requirements and reliability. The locos being kept are 37038/59/69, 37402/07/09/19/22-25, 37716 plus one other yet to be identified.

DBC: Damaged 66230 has finally moved into the shed at Toton.

GBRf: 66793-95 are all now in the UK. 66796-99 plus re-used 66734 have been registered for further imports to slot into. Also reserved are 66351-60.

ROG: The first revenue earning service is to start in April 2021 between Birch Coppice and Mossend.

FL: The remaining eight CI.86/6s were removed from service in the New Year with the ex-GA CI.90s taking over their duties of which just 90005/11 the last to enter service, the former on the 2nd February 2021 with the latter having been used for training based at Ipswich. However within days the veteran electricians were all back in service again though they then again were sidelined one by one as the hours left to next exam neared zero. Just two were left by the end of January, 86613/32. It is proposed that they are to be overhauled for future expansion of electric services so what was a once another common sight gone will hopefully return.



*above on their last working for a while, 86608 + 86639 on 4M87 11.13 Felixstowe North - Trafford Park, Belstead Bank, Ipswich (12.52) 20th December 2020 (Keith Partlow)
86608 was stored two days later with 86639 only having one hour left it shortly followed*



*above with not much time left 86637 + 86638 pass Stratford (13.58) 14th December 2020
(Sean Davies)*

Bombardier / Alstom: The sale of Bombardier Transportation to Alstom has regulatory approval so will be finalised on the 29th January 2021.

PHOTO SPOT: NR TEST TRAINS



left 37421 t&t 37219
6392 + 72639 + 977974
+ 9481 on 1Q99 16.27
Cambridge T&RSMD -
March Down, Kings
Lynn (18.03)
11th December 2020
(Toby Radziszewski)

right 37025 t&t 37254
Stourbridge Jnct on RTC,
Derby - Swansea (11.18)
22nd December 2020
(Paul Clifton)



below 37612 t&t 37610 on
1Z22 Tyseley - Bristol HL,
Didcot
(12.39) 2nd December 2020
(Spencer Conquest)





37254 t&t 37025 on 1Q15
06.50 RTC, Derby – Swansea
arriving Swindon to reverse,
Gloucester, 23rd December 2020 (Nigel Hoskins)



left 37116 t&t 37219 on 329Z 04.32
Westerton - Springburn, via Central
low level, Newton, Cathcart Circle,
Glasgow Central, Neilston,
Glasgow Central, Newton, Central
low level and Springburn, Glasgow
Central (04.44) 23rd January 2021
(Iain Gardiner)

below 97304 RTC, Derby,
7th January 2020 (Tony Falloon)



37612 t&t 37175 on 1Q66 Tonbridge - RTC,
Derby (14.57) 10th January 2021 (Peter Fuller)



67023 t&t 67027 on Exeter New Yard - Salisbury, Exeter St James (10.32) 14th January 2021 (Adrian Roberts)

above 43045 the third ex-EMR Colas Rail branded CI.43 HST power car to join the test fleet + 43060 on 13.02 0Z43 RTC, Derby - Leicester, Derby (13.26) 11th January 2021 (David Inett)



above right 37198 RTC, Derby 7th January 2021 (Tony Falloon)



73952 RTC, Derby, 7th January 2021 (Tony Falloon)



general view of RTC, Derby with 37800 to the fore, 7th January 2021 (Tony Falloon)

GONE BUT NOT FORGOTTEN

This is an occasional series devoted to showing rolling stock around the UK following withdrawal prior to or in the process of being scrapped. If you have photos and any accompanying info, then please forward to the Editor.

D8404: Built August 1958 it had a short life as the class was unsuccessful being stored in February 1968 and scrapped in July 1968 at Cox & Danks, North Acton where it is seen during that process by Derek Everson.



24145 (D5145): Built in December 1960 it was withdrawn in January 1976 and was seen below at Swindon Scrap Yard on the 11th May 1976 by Derek Everson in the final process of scrapping which was completed by June.



TRAFFIC & TRACTION NEWS

December 1

56103 departing Reading at 13.02 on OZ31 to Hanwell Bridge route learner (Spencer Conquest)



December 2

60062 passed Walsall at 14.37 on Wolverhampton – Immingham (David Williams)



66790 passed Walsall at 15.01 on Wellingborough - Coton Hill (David Williams)



70805 + 70811 passed Walsall at 15.20 on Westbury – Bescot (David Williams)



December 7

67006 t&t 67005 passed Overton at 14.13 taking the Royal Train north comprising 2921, 2904, 2903, 2923, 2916, 2917, 2920, 10546. This was the first journey by the train for the Duchess of Cambridge though the Royals were not warmly welcomed by SNP politicians.



December 8

92018 was seen at London Euston at 07.47 (Derek Everson)



59202 passed Harringay Green Lanes at 11.17 (Derek Everson)



66169 passed Harringay Green Lanes at 10.34 (Derek Everson)



710261 passed Harringay Green Lanes at 09.29 disappearing into the mist (Derek Everson)



December 13

56105 on engineering duties, Shildon 12.05 (Davy Pratt)



66727 passed Tame Bridge Parkway at 13.13 on 6G50 Weedon – Bescot (Paul Clifton)



December 24

59103 + 59104 were seen entering Leeds Midland Road at 15.30 on 0F59 06.50 from Westbury (Harold Hull)



December 26

59005 having donated its bogies sits on accomodation bogies at Leeds Midland Rd (Andrew Turnidge)



December 28

80013 passed Brockworth Farm bridge, Worcester in the snow at 10.25 (Sean Davies)



December 30

66848 passed South Tottenham at 11.43 on Whitemoor Yard – Barking (Eric Salisbury)



December 31

60065 was seen at Theale on the last familiarisation run for Didcot drivers (Spencer Conquest)



January 6

92028 was seen at Edinburgh Waverley at 07.56 on 5B26 07.19 ecs to Polmadie (Iain Gardiner)



January 1

66741 passed Beighton Jct at 11.20 on the diverted Clitheroe – Avonmouth cement tanks (Andrew Turnidge)



January 8

66149 passed Abbotswood Jct, Worcester at 14.11 (Sean Davies)



January 4

66711 passed Waterbeach at 11.16 on 6T64 08.27 Stratford - Whitmoor Yard (Toby Radziszewski)



January 9

66729 t&t 66722 passed Ifield at 16.31 at on a de-icing train (John Brace)



January 12

67010 t&t DVT 82229 passed Whitehurst on the approach to Cefn Viaduct at 14.15 on a Cardiff Canton - Wrexham General training run with a Mk4 set (Martin Evans)



January 19

73967 passed Carfin at 09.40 on 0Z10 08.50 Craigmenny - Elderslie GBRf trainer (Iain Gardiner)



January 13

66415 passed Chippenham at 13.04 on Merehead - Wootton Bassett (Keith Blackman)



January 21

43137 t&t 43141 was seen approaching Keith from the A95 on the Aberdeen - Inverness at 14.48.



January 15

390016 was seen at Edinburgh Waverley at 16.34 waiting to depart on 9M60 16.52 to London Euston (Iain Gardiner)



January 22

66091 passed Standish on diverted 10.45 Daventry – Wentloog (Nigel Hoskins)



January 30

66791 now de-named passed Waterbeach at 15.53 on 6G32 14.00 Biggleswade - Whitemoor Yard (Toby Radziszewski)



January 23

66109 passed Milton Fen Rd LX at 12.44 on 6M70 Chesterton – Mountsorrel (Simon Smith)



January 24

90004 + 90046 was seen arriving into Ipswich at 11.07 on 4L89 21.33 Coatbridge - Felixstowe North (Keith Partlow)



January 28

68017 + 68001 passed Brockhill Farm bridge, Worcester at 14.26 on Berkeley PS - Crewe Coal Sdgs flasks (Sean Davies)

News from Norfolk (Stuart Moore):
December started with the RHTT season still underway. The following were noted on the RHTT's during the month:



above 37218 t&t 37059 on 3S01 RHTT Brundall (14.05) 13th December 2020 (Stuart Moore)

- 01/12 37069 t&t 37422
- 02/12 66426 t&t 66428
- 03/12 37218 t&t 37401
- 04/12 37218 t&t 37401
- 09/12 37069 t&t 37422
- 10/12 37069 t&t 37422

11/12 37218 t&t 37401
 13/12 37059 t&t 37218 (see above)
 14/12 66426 t&t 66428 37401 t&t 37419
 15/12 37401 t&t 37419 66426 t&t 66428
 16/12 37059 t&t 37218 37401 t&t 37419
 17/12 66426 t&t 66428 37401 t&t 37419



above 66428 t&t 66426 on 3S01 RHTT and 37419 t&t 37401 on 6Z85 RHTT on Dereham, MNR - Stowmarket, Trowse (16.25) 14th December 2020 (Stuart Moore)

66428 was removed from RHTT duties and left in Norwich Yard. The season finished with the locos and stock returning to their homes from Stowmarket, with the exception of 66428 which remained in Norwich over Christmas awaiting repairs. Away from the RHTT's the following where also noted:



above 66791 t&t 66772 Postwick (14.31) 5th December 2020 (Stuart Moore)

Engineering work continued on the Reedham line over the first weekend in December. On the 5th 66772 t&t 66791 where noted on an engineer's service heading to the works site from Whitemoor through Postwick (see above). On the 6th 66779 was seen on the rear of a return working from the site to Whitemoor.

The return light locomotive from North Walsham to Ipswich following depositing the empty takers

was 66705 on the 14 December seeing passing through Trowse.

A rare sight for Norwich occurred on 16th December when a charter service was recorded in the yard at Norwich being prepared for passengers. 57314 t&t 57316 on the Northern Belle stock to be used on a dining special that day around East Anglia. On the same day 66007 was noted on the Tunstead to Norwich stones.

On the 23rd December 66079 was at the head of the Norwich stone traffic seen in the yard while the material was being off loaded. On the same day 37608 ran light engine form Norwich to Derby.

A final visit to Norwich before Christmas gave the opportunity to see 37401, 66428 and new arrival 88004 in the yard. The 88 had been sent up from Dagenham to Norwich for the Christmas period. A final trip into Norwich gave the opportunity to see the same three loco's above plus 37402. However, 88004 was not in the yard but on a driver run to Wymondham, seen passing through Arminghall.



above 88004 Stracey Arms (12.26) 31st December 2020 (Stuart Moore)

For me the highlight was on the 31st when 88004 ran light to Great Yarmouth, out via Acle and back via Reedham. A family walk gave the chance to see it at Stracey Arms and later in Brundall. 88004 returned to Dagenham in the New Year

Obviously with the introduction of the latest lockdown the opportunity to see rail action has been severely curtailed but I was able to visit Norwich on the 9th January and see 88001 while doing the family food shop. 66428 departed Norwich to Doncaster on 20th January overnight for repairs, Realtime Trains showing the run limited to 35mph. 37401 and 37402 departed Norwich light engine to Whitemoor on 23rd to assist with engineering works elsewhere. They along with 66429 and 66430 ran to Gresty Bridge on the 27th via Peterborough. On the 28th 37422 and 37425 ran light in the opposite direction and were seen in the Royal Dock at Norwich on the 29th.



321903 on 1Y33 08.58 to Liverpool St, Ipswich
(08.48) 24th December 2020 (Keith Partlow)



59203 on 6V32 13.21 to Whatley,
departing Bevois Park (13.15)
10th December 2020 (John Goodyer)



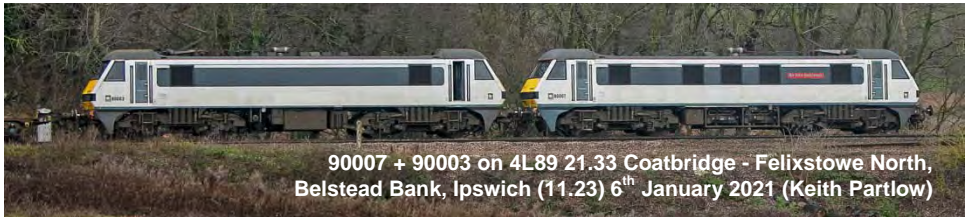
66620 + 90016 + 90048 + 90012
+ 66610 on 0E90 07.52 Crewe - Leeds
Midland Road, Hebden Bridge (11.00)
4th January 2021 (Harold Hull)



66538 + 66953 + 86639 +
86613 + 90004 + 90046 + 90010 + 90047
stabled Ipswich, 29th December 2020 (Michael Warrick)



66077 + 66074 Didcot (07.45)
5th January 2021 (Spencer Conquest)



90007 + 90003 on 4L89 21.33 Coatbridge - Felixstowe North,
Belstead Bank, Ipswich (11.23) 6th January 2021 (Keith Partlow)



above it is common for pairs of Cl.158s though less common for pairs of Cl.170s to operate on the Aberdeen – Inverness line but to capture a triple headed Cl.158 and double headed Cl.170 combination passing each other was very fortuitous

170409 + 170410 on 10.00 Aberdeen – Inverness & 158702 + 158724 + 158708 on 10.00 Inverness – Aberdeen, Keith loop (from B9116 road bridge) (11.13) 24th January 2021



325009 + 325015 + 325008 on 5A91
Crewe IEMD - Willesden PRDC, Easenhall
(12.49) 8th December 2020 (Colin Pottle)



70001 + 70017, 70016 & 70008 Southampton
Maritime 23rd December 2020 (Chris Addoo)



56090 + 56113 on 0M01 Doncaster - Shrewsbury,
Stalybridge (11.09) 9th January 2021 (Harold Hull)



37510 & 57303 on Derby
RTC – Wembley, Harrowden
Junct (13.13) 9th December 2020 (Colin Pottle)



above 90008 + 90049 on 4L97 06.15 Trafford Park - Felixstowe North,
Belstead Bank, Ipswich (14.00) 7th December 2020 (Keith Partlow)



66558 + 59206 pass under a rainbow
on 7C77 Acton - Merehead Quarrt, Reading
(13.32) 15th December 2020 (Spencer Conquest)



90026 + 90036 on 4M25 Mossend
Euroterminal - Daventry, Easenhall
(14.03) 9th December 2020 (Colin Pottle)



66770 on Avonmouth - Penyffordd cement tanks,
Cefyn Viaduct (14.20) 15th January 2021 (Martin Evans)



88002 on 4S44
Davertry - Mossend, Easenhall
(12.17) 8th December 2020 (Colin Pottle)



800024 in the snow on 1W01
Paddington - Hereford, Tilehurst
(10.21) 24th January 2021
(Spencer Conquest)

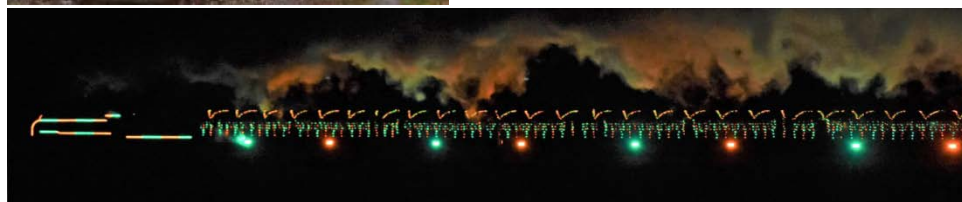


PRESERVATION PHOTO SPOT: SANTA SPECIALS

A few preserved railways managed to beat all the odds and the pandemic tier restrictions and put on Santa Specials for the Christmas 2020 period. One was the GWR as seen by Sean Davies on the 20th December 2020 with 4-6-0 Hall 7903 'FOREMARKE HALL' approaching Hayles Abbey at 11.25 on a six coach Santa Experience.

One of the most spectacular events was that staged by the MHR with steam hauled trains illuminated by digital LEDs. This programme after Boxing Day was cut short once Hampshire went into tier 4.

below with the lights illuminating the smoke trail, 4-6-0 508 on the Steam Illumination, Ropley (18.20) 14th December 2020 (Colin Addoo)



STOCK MOVES

Many of the numerous moves occurring over the last couple are shown below with others under **FRANCHISE / NETWORK NEWS**.



above 57303 + 315829 + 315833 on
5Q76 Ilford - Sims Metals, Newport,
14th December 2020
Cholsey (13.55) (Colin Addoo)

left 37884 + 769930 on 5Q74 Nemesis
Rail, Burton-on-Trent - Reading, Didcot
(12.38) 13th January 2021
(Spencer Conquest)



47727 t&t 47739 +720546 on 5Q70 Derby
Litchurch Lane - Bletchley Relief 2 past Harrowden
Jnt (14.24) 4th January 2021 (Colin Pottle)



above as the storage costs are lower Cl.43s have been moving from
Long Marston to Nemesis Rail, Burton-on-Trent as with 50007 hauling 43196 + 43071 + 43086 +
43075, Worcester (13.11) 17th December 2020 (Sean Davies)

47813 + 43465 + 42586, 41208, 42405, 41205, 42408, 40204,
6344, 6346 + 43467 on 5L48 09.54 Barrow Hill – Ely
Papworth Sdgs, Norwood Road LX (12.51)
21st December 2020 (Lee Spenceley)



43423 + 41209, 40205, 41204, 42585, 42402,
42407 + 43484 on 5L48 09.54 Barrow Hill - Ely
Papworth Sdgs, Little Downham (13.28)
22nd December 2020
(Toby Radziszewski)



43484 + 42107, 40221,
42106, 42584, 42401, 42404 +
43480 on 5L46 07.48 Barrow Hill - Ely
Papworth Sdgs, Ely (10.58)
21st December 2020 (Toby Radziszewski)





above 317505 + 317670 + 57312 on
5V03 11.58 Parkeston Quay - Ilford,
Colchester (12.14) 9th December 2020
(Keith Partlow)
then *below* to store
passing Waterbeach at 13.15
on 5E46 11.12 Ilford - Ely Papworth
Sdgs (Toby Radziszewski)



above 37884 + 769946 on 5Q74
Nemesia Rail, Burton-upon-Trent -
Reading, Didcot (12.38)
14th January 2021
(Spencer Conquest)



below 37884 + 317651 + 317654
on 5E46 11.09 Ilford - Ely
Papworth Sdgs, Waterbeach
(12.09) 2nd February 2021
(Toby Radziszewski)



NARROW GAUGE MATTERS

Vale of Rheidol (VoR): The photos below show the new shed at VoR as reported in **NARROW GAUGE MATTERS** in the Dec 2020 issue, all taken by Amber Holloway, James' daughter on the 27th December 2020 who quite handily works across the road.

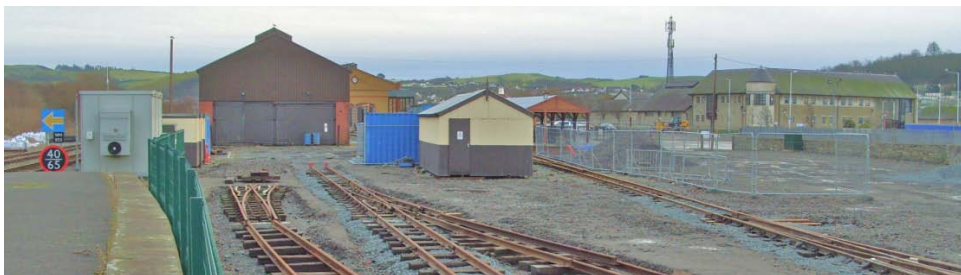


above & below looking west along the NR platform of Aberystwyth station with the new shed occupying the former VoR terminus, for comparison see photos on p25 July 2019 issue



below the former VoR terminus with 0-6-0DM 10 having arrived with a train from Devils Bridge, 24th October 2017 (Andy Jones)





above looking east from the front of the new shed towards the new terminus, to be moved again, just visible to the right beyond the small shed, with the original loco shed on the left and 2012 built shed half visible beyond

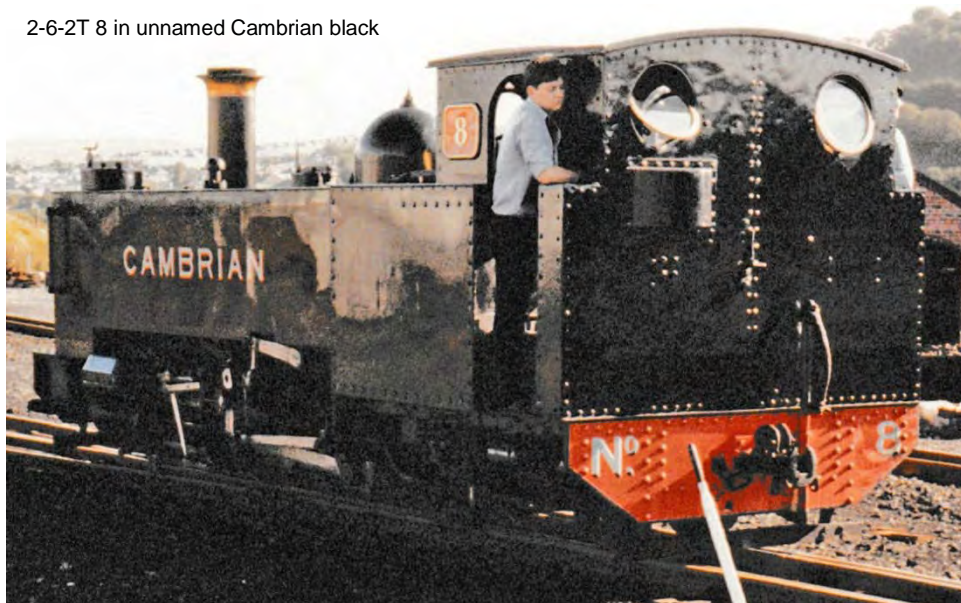
NOSTALGIA CORNER: VoR

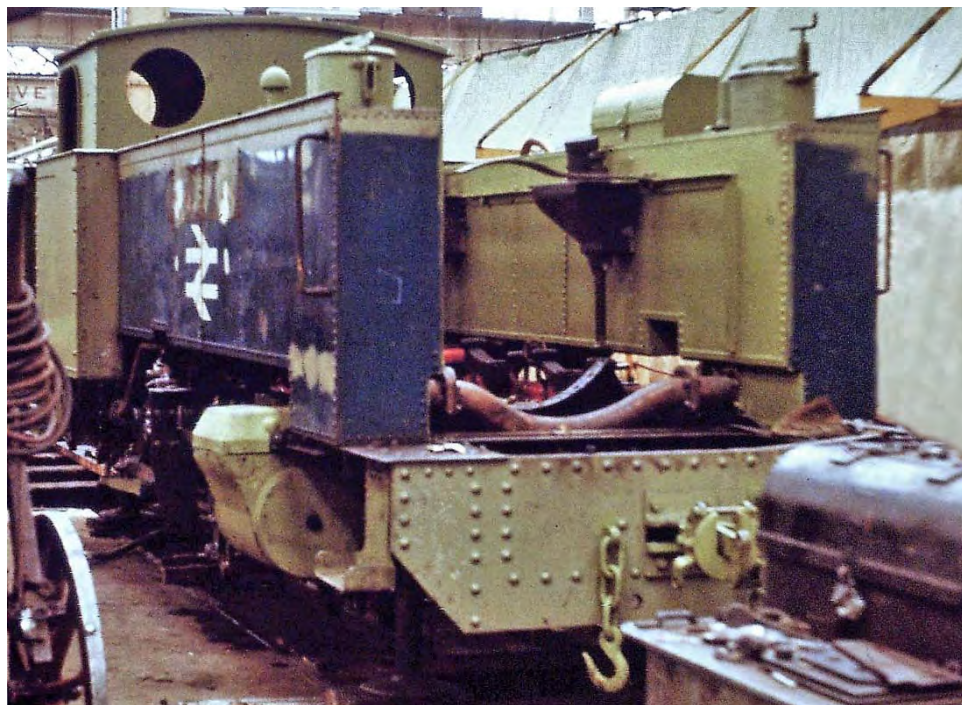
In the dying days of BR operation prior to privatisation in 1989 the three 2-6-2T VoR steam locos lost their BR blue livery in favour of more sympathetic heritage liveries as seen left and below on the 23rd September 1987 by Andy Jones.

left 2-6-2T 9 'PRINCE OF WALES' in yellow



2-6-2T 8 in unnamed Cambrian black





above right in the middle of the BR rail blue era the first of the three VoR purpose built 2-6-2T locos, 7 is seen undergoing an overhaul at Swindon Works showing its drab livery and BR double arrow branding, 11th May 1976 (Derek Everson)

TECHNOLOGY NEWS

66150 has been adapted to run on bio fuel and branded 'We are the future' with the letters HVO (hydrogenated vegetable oil) can be seen on the fuel tank. It is intended to power Cl.67s in this way.

With 21 years having now passed since the introduction of the 1999 Railway Safety Regulations governing the use of Mk1 carriages on track where the line speed exceeded 25mph, the ORR has launched a consultation on changes. With readily available second-hand components from withdrawn Mk3 hinged door stock, it looks like Mk1 stock still not fitted with central door locking will be now forced to comply or be banned. The fitting of window bars is also likely to be required as it will no longer be required to open doors from the inside by reaching out through droplights. The consultation finished on the 11th December 2020.

In an agreement between Hitachi and Eversholt Rail, a GWR Cl.802 Bi-mode is to be fitted with batteries, by replacing one of the diesel engines, to demonstrate the potential and will save approx 20% on fuel. Charging will occur either under OHL or when static during turnarounds. On non-electrified routes the use of battery power will improve air quality and noise levels particularly around stations.

The bodyshell of the Revolution ELR (Very Light Rail) built by the consortium of Rail Safety & Standards Board, Eversholt Rail, Cummins and the University of Warwick has been delivered to the Quinton Rail Technology Centre, Long Marston for final assembly and testing. Part of the DfT's Future Rail scheme it will be propelled by a diesel-electric engine using lithium titanate batteries to store energy. A second VLR vehicle is being built at NP Aerospace in Coventry and will operate between the station and hospital in Coventry. Once complete in February 2021 it will be tested at the new rail innovation centre in Dudley.

RAIL TOUR NEWS

All charters have been affected again by the latest lockdown with none running until at least March 2021.



below
90002 t&t DVT 82139
+ 10416, 11068, 11070, 11087,
10411, 11076, 11098
London Euston (06.54) (Toby Radziszewski)



After several delays the inaugural runs of the LSL Midland Pullman and the Royal Scot ran on the 12th December 2020 from London termini. The first to depart was 90002 on the 07.30 Euston – Glasgow Central arriving at 12.57 and with a quick turnaround departed at 13.16 to Carlisle where a 3 hour stop was made. As the train had crossed the border it was felt inappropriate to have the layover in Glasgow due to coronavirus restrictions. It left Carlisle at 17.17 arriving into London Euston at 21.19.



43055 t&t 43046 heading
north passing West Hampstead
at 09.18 (Toby Radziszewski)



*above 43055 t&t 43046 passing Harrowden Jnct at 10.18 (Colin Pottle)
below 43046 t&t 43055 Stockport at 12.53 (Harold Hull)*



above 43055 + 43046 about to depart Crewe at 15.25, 12th December 2020 (Peter Jackson)

The Midland Pullman with 43046 t&t 43055 hauling 44078, 41169, 40801, 41182, 41059, 41162, 40802, 41108, 41176 left St Pancras International at 09.12 on a circular route heading to Crewe via Derby, Chesterfield, Hope Valley to Chinley, Guide Bridge and Stockport, arriving at 14.00. Continuing south at 15.30 via the WCML it crossed over to the MML via Nuneaton and Leicester back to St Pancras Int arriving at 18.51.



left 43055 about to depart ecs north to Crewe, St Pancras Int (17.06) 12th December 2020 (Toby Radziszewski)

The 2021 Jacobite season has been announced by WCR which will start with the morning service on the 2nd April augmented by the afternoon service on the 26th April 2021. Both will run seven days a week until the 1st October (afternoon) and the 29th October 2021 (morning) a total of 370 services, more than had been planned for the 2020 season prior to the pandemic.



above D6851 (37667) + D6817 (37521) on 1Z37 Oxford - Crewe private LSL charter, Oxford (11.36) 6th December 2020 (Spencer Conquest)

NOSTALGIA CORNER: 1960s



above Cl.43 D845 'SPRIGHTLY' (wd 10/71, cut 05/72) Old Oak Common June 1968 (Derek Everson)

GRAFITTI

The scourge of criminal damage continues.



*above 387146 + 387170 on Paddington - Didcot, Cholsey (09.15) 8th December 2020 (Chris Addoo)
below 321422 Liverpool St (14.40) 14th December 2020 (Sean Davies)*



COACHING MATTERS



*above there are currently four stored ScotRail HST sets in Slateford Yard as seen at 14.32,
15th January 2021 (Iain Gardiner)
the set nearest the mainline is HA15 with the other three out of HA02/06/17/20*

OUT & ABOUT

by James Holloway

*For clarity, steam locos are now shown in red. To be more helpful for those interested in where stock was exactly, can I ask all contributors who list trip sightings over long distances, to please add all locations when submitting to James. Please also ensure your sightings reach James a few days before the press deadline, see **SOCIETY NOTICE BOARD**...ed*

Blake Willimot:

26th October Barnham:

14.48 73202 0Z52 Eastbourne-Bognor Regis

27th October Barnham:

12.54 73962/64 1Q52 Eastleigh Arlington

28th October Barnham:

04.15 60046 6Z92 Willesden-Eastleigh

29th October Eastleigh:

66507/94 4O18 Lawley Street-Southampton

66133 4M71 Southampton-Birch Coppice

DR98908/58 3S80 Totton-Eastleigh

66050 6M48 Southampton-Halewood

66572 4O15 Lawley Street-Southampton

66003 4O43 Wakefield-Southampton

59003 6O39 Westbury-Eastleigh

66540 7V16 Fareham-Whatley Quarry

66782 4M19 Southampton-East Midlands Gateway

66549 4O14 Garston-Southampton

DR98923/73 3S82 Totton Yard & return

70015 4M61 Southampton-Trafford Park

59201 7Z07 Southampton-Whatley Quarry

DR98914/64 3S81 Totton Yard & return

66539 4O49 Crewe-Southampton

66789 4O56 Castle Donnington-Southampton

Shawford: DR98914/64 3S81 Totton Yard

66748 4M51 Southampton-Trafford Park

66128 4O21 Trafford Park-Southampton

66780 4Y19 Mountfield sidings-Southampton

66003 4E68 Southampton-Wakefield

DR98926/76 3S84 Effingham Jct & return

DR98927/77 3Z00 Eastleigh-Totton

66572 4M99 Southampton- Crewe

70007 4O57 Wentloog- Southampton

66730 6X01 Scunthorpe-Eastleigh

66745+66847 6Y43 Eastleigh-Hoo Jct

66555 4O17 Lawley Street-Southampton

66597 4O95 Leeds-Southampton

66730 6E15 Eastleigh-Scunthorpe

Winchester: 66541 4M55 Southampton-Lawley Street

66745 6Y48 Eastleigh-Hoo Jct

66748 4O23 Trafford Park-Southampton

30th October Shawford:

66745 6Y48 Eastleigh-Hoo Jct

60046 6Z93 Willesden-Eastleigh

DR98922/72 3S80 Totton Yard & return

66585 4M55 Southampton-Lawley Street

66531 4O14 Garston-Southampton

70812 7O26 Hinksey-Eastleigh

66105 4O39 Morris Cowley-Southampton

66782 4M19 Southampton-East Midlands Gateway

66131 0O03 Eastleigh-Dollands Moor

70015 4M61 Southampton-Trafford Park

66848 6V27 Eastleigh-Hinksey

66570 4O49 Crewe-Southampton

66748 4M51 Southampton-Trafford Park

66128 4O21 Trafford Park-Southampton

66780 4Y19 Mountfield sidings-Hoo Jct

70802/12 5Z44 Eastleigh-Crewe

66754 4O69 Hams Hall-Southampton

66003 4E68 Southampton-Wakefield

66515 4O17 Lawley Street-Southampton

66745 6Y43 Eastleigh-Hoo Jct

66570 4E96 Southampton-Leeds

70017 4O95 Leeds-Southampton

66719 6E15 Eastleigh-Scunthorpe

Winchester: 66133 4M71 Southampton-Birch Coppice

66003 4O43 Wakefield-Southampton

66050 6M48 Southampton-Halewood

66594 4O15 Lawley Street-Southampton

Eastleigh: 66105 4V39 Southampton-Morris Cowley

66539 4O57 Wentloog-Southampton

1st November Barnham:

15.58 66221 6N01 Preston Park-Eastleigh

18.59 66160 6N02 Preston Park-Eastleigh

2nd November Lewes:

59206 7V00 Newhaven-Acton

9th November Barnham:

22.10 DR75502 6Q68 Eastleigh-Godstone

10th November Chichester:

66558 7V09 Chichester-Merehead

13th November Southampton Central:

66789 4M19 Southampton-East Midlands Gateway

Eastleigh: 66514 4O14 Garston-Southampton

66003 4O39 Morris Cowley-Southampton

66206 4O43 Wakefield-Southampton

60029 6Z91 Eastleigh-Willesden

Shawford: 70802 0V27 Eastleigh-Hinksey

66538 4O49 Crewe-Southampton

60029 6Z91 Eastleigh-Willesden

DR98922/72 3S82 Totton Yard & return

66782 4M51 Southampton-Trafford Park

66077 4O21 Trafford Park-Southampton

66775 4Y19 Mountfield sidings-Southampton

66206 6Z91 Eastleigh-Willesden

66755 4O69 Hams Hall-Southampton

66709+317656/61 5Q17 Ilford-Eastleigh

66511 4M99 Southampton-Crewe

66003 4V39 Southampton-Morris Cowley

66702+66160+66006 0Y42 Hoo Jct-Eastleigh
66746 6X01 Scunthorpe-Eastleigh
66160 6O03 Eastleigh-Dollands Moor
66514 4E96 Southampton-Leeds
57312+319377 5Q86 Long Marston-Eastleigh
66775 6Y82 Southampton-Tonbridge
66702+66538+66848 6Y43 Eastleigh-Hoo Jct
66597 4O17 Lawley Street-Southampton
Barnham: 313121 5Z31 Ferme Park-Eastleigh
23.40 66006/83 6N01 Eastleigh-Lancing
23.46 DR98929/79 3S93 Horsham & return
23.50 DR73931 6J86 Barnham-West Worthing
19th November Barnham:
16.24 73961/63 Tonbridge-Seaford
20th November Barnham:
23.44 66101 6N01 Eastleigh-East Croydon
21st November Barnham:
16.56 66790 6G13 Stoats Nest Jct-Eastleigh
18.26 DR98918/68 3S91 Horsham & return
18.27 70813 6C04 Stoats Nest Jct-Eastleigh
18.54 66789 6Y83 Stoats Nest Jct-Eastleigh
22nd November Barnham:
00.24 66789/90 7G17 Eastleigh-London Victoria
07.49 66014 6N02 Stoats Nest Jct-Eastleigh
07.58 DR98918/68 3S93 Horsham & return
08.07 70802 6C05 Stoats Nest Jct-Eastleigh
23.34 66849 6C06 Stoats Nest Jct-Eastleigh
23rd November Barnham:
20.52 313121 5Z31 Eastleigh-Ferme Park
24th November Barnham:
12.50 73961/63 1Q52 Eastleigh & return
23.14 70813+66849 6C15 Eastleigh-Haywards Heath
25th November Barnham:
13.25 73136 0Y73 Tonbridge-Eastleigh
26th November Barnham:
02.08 37421 3Q03 Eastleigh & return

Scott Aitken:
26th October Slatford 08.10-09.30: 66002, 70814/15
92033, 221108/14/30/34, 380102, 385010/19/30/31/33
397007, DR98907/57
Slatford Yard 09.40: 67012/20, DR79251-57
27th October Slatford 06.50-08.00: 66207, 92043
380104, 385004/39, 390153, 397002, 801204
DR98907/57
28th October Slatford 06.45-08.40: 66074, 66171
92018, 158736, 221104/08, 380103/13, 385014/19/21/25
385028/31/42, 390122, 390122, 397011, 801215, DR98907/57
30th October Slatford 07.40-08.30 & 10.35-11.10:
66091, 66301/04, 70808, 92038, 221107/11, 380101/08
385008/14/19/21, 801206, DR98910/60
1st November Craiglockhart Jct 08.28: 66563/90
2nd November Slatford 08.20-08.40: 70808, 380115
385004/32/45
4th November Haymarket West Jct 07.30-08.10:
43145/52, 170395, 170402/05/11/15/27/29/30/33, 221114
334002/08/11/19/22/26/36-38/40, 385009/28/33/38
385102/03/08/14/19/20/22

19th November Slatford 09.30-10.40 & 16.40-17.30:
66109, 66754, 68005/06, 70814, 221104/42, 380109
385013/22/35/42/44, 390124, 397002
26th November Slatford 18.30-18.45: 73971, 380105/14
27th November Slatford 08.15-09.00: 37175, 92020
221104/10, 380102, 385003/13/34/40, 397001
DR98907/57
1st January Slatford 08.00-09.35: 66104, 66421/22
70801, 390130, 397008
13.15 66738+66745 6K53 Millerhill- Cathcart
16.25 70802+70806 6K54 Millerhill-Cathcart
5th January Slatford 08.30-08.55: 70801, DR79251-57
70813 Slatford Yard-Irvine Paper Mill
73968 0Z10 Craigentiny-Elderslie U.P.L.
21st January Slatford 09.15:
73967 0Z10 Craigentiny-Elderslie U.P.L.
22nd January Slatford 08.55-10.05: 66090/93, 66426
220009, DR80210, 73969/70 0Z10 Craigentiny-Elderslie
26th January Slatford 14.23:
66781 4S69 Doncaster-Elderslie

Frank Barrington:

29th November Garforth 11.30-12.30: 43207, 43366
155342, 156491, 158793, 185120/27/36/37/47/50, 195018
195124, 220004, 802213/16
5th December Midland Rd Leeds 14.20: 66420, 70004
70008-10/16/19
6th December Garforth 13.00-14.30: 68024/31, 158753
158754/95, 185113/19/20/29/36/40/44/45/49/50, 195014
195102/27, 220001/31, 221122/30/34, 802214
23rd January Midland Rd Leeds 12.45: 59005, 59103
66539/88, 66618, 70009/16/18

Bob Johnston:

2nd November Radley: 66168, 66504, 66782, 70007
70801, 165118/20/31, 220012/17/29, 221115, 800004/13
800024/36, 802105/06
9th November Kennington: 66532/36/42, 66748, 165120
165124, 220013/16, 800018/24, 802109
11th November Kennington 15.45: 66087
13th November Radley: 66003, 66514, 66706, 70015
70802, 165122/23, 220010/20/21/26, 221128/31, 800005
800022/30/32, 800316
14th November Radley: 59201, 165118/22/24, 220006/11
220023, 221124/29/39, 800007/19/36, 800320, 802103/12
18th November Radley: 66001/77, 66135, 66709, 70001
70805, 165121/24/27, 220016/32, 221122, 800001/23/32
802105/08
21st November Radley: 165105/19/20, 220023/32
221119, 800011/18/25/33, 800318, 802112
27th November Radley: 66562, 66847, 165125, 220025
221121/24/33, 800018/31, 800319, 802104
28th November Radley: 66509, 66849, 165118/20
220002, 221124, 800020/34, 800312, 802112
30th November Radley: 66077, 66748, 165118/19/21
220002/34, 221113, 800009/24, 802113
5th December Radley 13.30: 165119/24, 220011/19/30
221121/28/31, 800014/17, 800308, 802113

10th December Radley 14.20: 66077, 70011, 165119/21
220025, 221123/38, 800003/11/26, 802101
14th December Radley 13.25: 66077, 66763, 165124-26
220003/08, 221134/37, 800014/15/27/28
15th December Radley 13.55: 66077, 70006, 165121/24
165126, 220008/22, 221133/34, 800005/22/33, 802010
16th December Radley 13.50: 57305+387136/39, 66077
66763, 70020, 165119/20/26, 220003/06/07, 221134
800024/32
19th December Radley 12.50: 66505, 66848, 165121/23
220011/28/29, 221137, 800013/18/34, 800307, 802114
22nd December Radley 14.40: 66847, 70016, 165119/22
165127, 220015/18/19/34,
23rd December Radley 13.55: 66077, 66175, 66562
66758, 70802, 165110/22/26, 220015/22/33, 221133
800017/18, 802019, 802110

John Lewis:

Kirkby in Ashfield with dates seen:

23rd October: 47727/49, 720547
26th October: 47727/49, 720523
27th October: 47727/49, 720553
2nd November: 47727/39, 720542
3rd November: 47727/39, 720548
10th November: 66717/78, 701002
11th November: 66717/78, 701019
16th November: 47727/49, 720522
17th November: 47727/49, 720547
19th November: 47727/49, 720521
23rd November: 66716/25, 720549
26th November: 47727/39, 720527
27th November: 66725, 701009

Ian McAlpine:

31st October Peterborough: 66704/06/25, 91109
156413, 170112, 170522, 180102, 700111/39, 801206/13
801217, DVT 82212
Retford: 801216, DR97505/605/805
Doncaster: 56078, 66783, 156411, 331105, DR79301-04
York: 68024/27, 150210, 156488, 158752, 158843/67
170478, 180103, 185112/32/33/39, 195103, 220002/03/08
221124/41, 222019, 800107/11, 800203/07, 801103/08
801209/11/13/28, 802212/13/15
6th November Peterborough: 60046, 66047/97, 66541
66712/69/77/78, 156922, 158813, 170111/15/17, 170522
180102, 700107/30/52, 755415, 800208, 801207/12/13/15
801217/20/30, DR75404
Newark Northgate: DR75503
Doncaster: 67005, 70816, 331112, DR79301-04
York: 68028, 801212
Darlington: 66420
10th November Darlington: 158849, 800112, 801219
York: 68031, 158859
Doncaster: 56078, 66142, 66783, 70816
Peterborough: 66788, 700133
13th Peterborough: 66047, 66149/56, 66551, 66715/23/67
66771/88/91, 156401/11, 170111/15, 170519/20, 700124
700131/47, 755330, 800206, 801202/10/15/16/24/30

Doncaster: 43164, 60076, 66142, 66773, 70817, 195015
331106, 800210
York: 68028, 155346, 185104/09, DR97501/601/801
17th November Darlington: 158860, 801228
York: 37025, 68031
Doncaster: 37610/12, 43124/64, 56087, 66076, 66563
Grantham: 156406
Peterborough: 66770, 700141
27th November Peterborough: 66769, 91130, 158785
170112, 170519, 365502/06, 700115/33, 800201/05
801227
Newark Northgate: 158866
Doncaster: 08853, 66092, 66563, 195012, 331102
York: 60163, 801220, DR75401
1st December Darlington: 156449, 801202/28
York: 60163, 68025, 158782
Doncaster: 37116, DR97301-04
Grantham: 156498, DR75402
Peterborough: 66756/58/73, 700127, 800103
9th December Peterborough: 700122
10th December Peterborough: 66713, 91119, 158852
170117, 170522, 180106, 365502/22, 700102/31, 800202
800203, 801214/23/24
Newark Northgate: 158856
Doncaster: 56113, 56302, 66418, 153319/76, 170458
331105
York: 57002, 68026, 801204
Darlington: 158792
13th December Darlington: 156463/80, 801219, 928001
York: 60163, 68022, 195112
Doncaster: 66717/49/77/85, DR79602-04
Newark Northgate: DR73114, DR75504, DR77904
Peterborough: 66093, 66716
18th December Peterborough: 66206, 66719/56, 158847
170103, 365516/24, 700135/43, 800105/08, 801216/23/29
Newark Northgate: 156407
Doncaster: 37610/12, 156916, 195102
York: 68032, 150277, 801222, ADB965217/40
20th December Darlington: 156468/72, 801230
Northallerton: 60076
York: 47593, 68031, 150276, 195101
Doncaster: 56090, 66784, 800201, 801102
Newark Northgate: DR73117, DR77907
Peterborough: 66713/25/36/53/80/88
24th December Peterborough: 66715/63/66/84, 156912
158857, 170113, 170519, 170638, 180106, 700104/41
800110, 801201/05, 802304, 928001
Doncaster: 56105, 60021/59, 66013, 66181, 66714/71/82
156909, 195102/16, 331102
York: 37716, 68024, DR80210
28th December Darlington: 156449/79/89/96, 158842
221138, 801207/09, 600210/11/16/19
York: 37716, 68022, 155342, 801211
Doncaster: 56105, 70809/14
Peterborough: 66096, 66703/14/29/31/49/70/84, 158780
928001
18th January Whittlesea: 66025
22nd January Whittlesea: 66109

Paul Rosser:

15th December Woodley 10.32: 70002

Michael Warrick:

6th December Felixstowe: DR73120, DR77909

Trimley: 66511, 66956

14th December Norwich Station: 37069, 37422, 158806

745003, 745106/07, 755331/38, 755411/16/19

Norwich Depot: 745002/10, 755336, 755404-06/14

29th December Ipswich: 66414, 66508/11/19/38/51

66705, 66953, 86613/39, 88004, 90004/10/11/46/47

745003, 745110, 755327/28/33, 755408/12/16

4th January Great Yarmouth: 755326

7th January Felixstowe: 755422

13th January Felixstowe: 755417/21

14th Felixstowe: 755402

15th Felixstowe Dock South Terminal: 08663

Pete Jackson:

12th December Crewe 06.50-14.30: 40145, 43046/55/58

43059, 47593, 57309/14/16, 66077, 66114/74, 66434

68013, 90001/02, 150127, 153310/22/23/27, 156411

156916, 158830/35/56, 175003/06/08/11, 175105/07/10/11

221102/03/06/08/11/14-16/43, 319366/69/72/78/81

323225/34, 350102/04/06/08/09/11-13/15/16/18/23/28

350232/33/36/39/42/43/45/55/67, 350368/72/73, 350402

390005/06/10/16/40/42/44-46, 390104/14/15/18/19/22/24

390125/30/32/34-38/43/45/51/52/53/55, DVT 82139

19th December Manchester Victoria 08.25-10.00: 34046

D1935, 66605, 150102/20/41, 150224/25, 153307/15/24

153328/59, 156423/66, 158759/89/92, 158871/72, 158903

185103/23-25/29/41, 195004/11/14, 195112/30, 319369

802208/10/11/17

Manchester Piccadilly 11.05-12.15: 66712, 150108/09

150112/13/15/16/21/23/31/44/45, 150220/23, 153308/76

156459, 158852, 175008, 175103/10, 185106/08/18/21/22

185126/31/38-40/43, 195025/30, 195114/25, 220014/30

221121/36, 319367/78/81, 323227/34/35/38/39, 331009

331013/18/29/31, 390044, 390123/32, 397008

Sean Davies:

11th December Oxford: 165119, 168107, 168328

800312

Maidenhead: 165127, 387143

Reading: 57306, 165126, 387134/35/40/42/46/54/59/60

387162/63/70/74, 800013

Hayes & Harlington: 37510, 66740, 345030/51, 387131

387169, DR75011

Old Oak Common: 360202

North Pole: 345028, 800019/23/31, 800303/06/10

802016

Marlyebone: 68012, 165001-03/08/09/12/14/15/17/18/24

165027/32/36/38, 168003/05, 168107, 168321/22, 172103

172104

Aylesbury: 66507/22, 165006/13/22/26/35/36, 168217

168327

Paddington: 332004/06, 345020/40, 387133/62, 800004

800007/19/26, 800301/03, 802002/21, 802110

St Pancras: 222009, 222101

King's Cross: 365516, 387108/17, 800203

Euston: 92014/20, 390045, 390124/55

12th December Euston: 90002, 92014/18, 390153

710273

London Victoria: 377120/22/54, 377201/08, 377305

377405/20/23/68, 377606, 377703/05, 387207/13/19

455801/46/48

Clapham Jct: 377104, 377416, 387221, 450024/43

455713, 455823/40

Balham: 377141, 377612

Carshalton: 700028

Sutton: 377423, 377602

Epsom: 377705

Leatherhead: 377605

Dorking: 455705

Holmwood: 377603

Horsham: 377449, 700152, DR97508, DR98916/18/66

Barnham: 313207, 377112/17/18/28/41/47/59, 377402/07

377432/40/55/64

Littlehampton: 377406/58

Worthing: 377111, 377427

Bishopsgate: 377114, 377428/40

Hove: 313208, 377126, 387201/11/126

Preston Park: 377466, 700107/23

Haywards Heath: 387218

Three Bridges: 700037, 700115/25/49

Gatwick Airport: 377614, 700105

East Croydon: 377101/09/27/42/44/54/61, 377202/15

377411/13/21/32/36/37/41/53/62/64, 377613/16/19/22/26

387202/03/25, 455805/08/10/11/15/16/28/44/45, 700124

700130/32/36/46/48

East Grinstead: 377132/54, 377215, 377421/50/71

Hurst Green: 171722/25/27, 377215, 377450

London Bridge: 376008/18, 465008/14, 465161/64

465249, 466034, 700041

13th December Waterloo: 444004/10/15, 455850/65/70

455919, 456013, 707009

Clapham Jct: 377135/39/57/59, 377205/07/14

377303/05/08/19/28, 377406/11/14/18/34/49/58/61/64/75

377602/07/12/16/17, 378147/52, 378207/18/29, 387202/04

387214/15, 444003/04/08/12/23/24/38/40, 450049/56/88

450098, 450108, 455705/06/12/18/29/34, 455801/19/32/43

455846/50/57/62/64, 455906/08/17/19, 456009/10/12-14

458504/11/17/29/31, 707004/11/29, DR79265/74

Wimbledon: 450098, 455706/18, 456012, 458529

707004

Raynes Park: 455705, 455864, 456021

Epsom: 377612

Guildford: 165103/14, 444039, 450024/27/29/32/49/50/65

450078/91, 455702/22/23/41, 455861/69/74, 455905/12/13

456009/13/22

Woking: 444002/11, 450005/08/11/14/27/29/32/34/38/47

450050/58/96, 455873, 456016, 707015/17

Surbiton: 455902

Liverpool Street: 321336, 321901, 322482, 345005/39

357013, 360109, 379030, 710104/05/11/30, 745004

745109

14th December Paddington: 332008, 345030/52/63
387173, 800010/11/13
Liverpool Street: 315848, 317347, 321312/17/26/45
321434, 345022/39/56, 360112/14, 379030, 710101/03-05
710107/09/16/22/28/30, 745001/08
Stratford: 57303, 66517/61/64/99, 86637/38, 315829/33
315848/56, 317345/48, 317502/04, 321301/02/04/08/17
321318/22/29/33/34/38/49/51/53/57/59/63, 321408/10/19
321421/22/23/26/28/30-32/41/45, 321901, 322482/84
345005-12/15-17/38/39/42, 360109/12/14, 378202/25/27
378229/31/55/56, 745003/05/09, 745101/05-07
Acton Main Line: 59204, 66110

Alan Jones:

24th November Inverness 11.20-11.30: 73967/69
158707/33
Elgin 15.10: 43137/69
25th November Elgin 09.25: 73967/69, 158717
28th November Elgin 15.10: 43037, 43139, 158710/22
29th November Elgin 15.10 & 20.25: 37025, 37254
43026, 43131
1st December Elgin 15.10: 43135/68, 158721/38
2nd December Elgin 15.10: 43142/44
4th December Elgin 15.10: 43136/76, 158717
9th December Inverness 10.30: 43033, 43136/76
158725, 170413/31
22nd December Elgin 15.10: 43003, 43149, 170425
23rd December Elgin 15.10: 43035, 43129
24th December Elgin 15.10: 43012, 43146, 158715
20th January 2021 12.45: 43015/137/141/145



43137 t&t 43141 on 1H29 10.12 AB – Inv
passing 43145 t&t 43015 on 1A50 11.02 Inv – AB, Elgin

Ralph Wainwright:

20th December Midland Road Leeds: 43047/49, 66419
66509/10/12/38/46/60/70/71/89/99, 66953, 70004/07
70009-11/13/16/18/19, 150215

Dennis Dey:

2nd December Liverpool Street: 345014/16/42, 745105
745108
Stratford: 66526, 66610
Ilford: 345006, 710101
Seven Kings: 345003
Bethnal Green 11.35-13.15: 321902, 322481/85, 345003
345009/10/12/14/16/56, 710102/04/07-10/12/14-17/19/21
710124-30, 710260/71, 720511/36, 745002-06/09, 745103
745105/07-10

9th December Crawley Yard: 66149
Liverpool Street: 345003/15/56
Stratford: 745106
Ilford: 08700, 345011/39
Bethnal Green 11.35-12.45 & 13.15-13.45: 37099, 37175
322483, 345009/14/22/42, 710101-05/07/08/10/11/15-17
710119/20/22/25-28/30, 710260/71
Chingford 12.50: 710106/09/12/23/29
11th December Finsbury Park 10.30-14.15: 66017
66513, 800102/06/10, 800203/08, 801107, 801208-10/12
801214-16/19/23/25, 802302
King's Cross 14.30: 800111, 801202/05

Aidan Turner:

7th December Longport 13.10-13.45: 08784, 08922
56032/65/77, 66423, 66702, 156406, 323228, 350121
350251
8th December Kidsgrove 11.15-11.35: 56087, 66555
170420, 350101, 350376
27th December Bescot 12.15-13.15: D4157, 08670
66035/55, 66175, 66727/30/47/61, 350262

Bob Zepin:

2nd November Redhill: 700111/12
East Croydon: 377602, 387211, 700107, DR73917
Norwood Jct: 700104
London Bridge: 375604/13, 375810/20/28, 375909
376004/11/18/19/23/27/31/36, 378145, 465011/15/21/32
465152/58/61/70/72/76/78/88/90/94/96, 465903, 466001
466008/09/17/43, 700020/48/60, 700103/21/23/35/36/38
700140/50/54
Blackfriars: 700028, 700130
City Thameslink: 700046/48/50, 700155
St Pancras: 700010, 700149
Finsbury Park 11.00-14.00: 66013/19, 66511, 387101/05
387107/08/10/11/13/14/17/19/23/24/26/28/29, 180105/07
700011/14/30/34/36-39/43/53/54/57, 717001/02/06/07/09
717011/13-17/20-24, 800101/11, 800202, 801104/20
801204/15
Brockley: 378143
7th December Redhill: 165114, 377317, 377414, 700007
700108/24/33/48
Reading 10.00-13.05: 66050, 66525/62, 66602, 165111
220019/27/28, 221125/38, 345006/49/57/63, 387154/59/70
387171/74, 458514/16/33, 800002/06/07/09/12/14/17/21
800023/25/28/30-33, 800302/07/13-15/19, 802002/05/09
802011/18, 802103/04/06/08/11
14th December Redhill: 377312, 377415, 700121
London Bridge: 375904, 465037/44/49, 465164/72/80
466015, 700041/53, 700119/49
Blackfriars: 700017, 700115/28
City Thameslink: 700037
Farringdon: 700047/53
King's Cross 10.00-13.00: 180108/12, 387105/07/09-16
387118/21/22/26/29, 700008/30/52/57, 800104-06/11/13
801103, 801201-04/06/09/10/15/26/28/29, 802302
New Cross Gate: 378144
Norwood Jct: 700103

East Croydon: 700136, DR75502
Coulston South: 700138

Bradley Marshall:

9th December Yeovil Pen Mill: 158749, 166209
Dorchester West: 165128
Dorchester South: 66721/26, 444008/24
Wareham: 444004
Poole: 444004/14/17/33/34
19th December Yeovil Jnct: 159012/15/18/19
159102/07
Exeter Central: 150233, 158765, 158959
Exeter St David's: 150249/65, 158959, 159016/19
159105, 220017, 802005, 802101
Torre: 143618, 150234/44
Torquay: 150221, 220032
Newton Abbot: 150232/61
Dawlish: 166208
Pinhoe: 159106
22nd December Bath Spa: 802001
Bristol Temple Meads: 43005, 43198, 158745, 158951
165130/36, 166205, 220002/09/13/24, 221122
Bradford on Avon: 165134
Westbury: 59101, 66002, 166209
Yeovil Pen Mill: 165137
7th January Yeovil Pen Mill: 37175

Alan Hardcastle:

27th November Stratford:
11.33 66078 6L69 Peterborough-Bow
11.35 66414 6V12 Chelmsford-Acton
11.43 86607+86637 4L91 Trafford Park-Felixstowe
11.51 66585 4E24 London Gateway-Leeds
11.59 90006+90012 4L89 Coatbridge-Felixstowe
12.01 66569 4M63 Felixstowe-Trafford Park
12.35 66553 4M88 Felixstowe-Ditton
12.45 66557 4L41 Crewe-Felixstowe
12.52 86609+86608 4L97 Trafford Park-Felixstowe
13.01 66765 4M23 Felixstowe-Hams Hall
13.07 66541 4L36 Wentloog-Felixstowe
13.12 37510+387141 5Q64 Ilford-Reading
1st December Leyton Midland Road:
16.18 66422 4L48 Daventry-Purfleet
3rd December Stratford:
10.07 66541 4M94 Felixstowe-Lawley Street
10.13 66592 4L89 Coatbridge-Felixstowe
10.35 66020 6L69 Peterborough-Bow
11.12 66569 4L41 Crewe-Felixstowe
11.49 66532 4E24 London Gateway-Leeds
12.01 66519 4M63 Felixstowe-Trafford Park
12.33 66553 4M88 Felixstowe-Ditton
12.44 66505 4L97 Trafford Park-Felixstowe
13.06 66705 4M23 Felixstowe-Hams Hall
7th December Leyton Midland Road:
11.47 66101 0Z77 Acton-Dagenham
11.56 66778+66761 6V32 Tilbury-Trostre

8th December Leyton Midland Road:
09.51 88004 6X43 Dagenham-Garston
10th December Leyton Midland Road:
10.05 88001 6X43 Dagenham-Garston
11th December Stratford:
11.13 66517 4L41 Crewe-Felixstowe
11.22 66160 4E25 Bow-Heck
11.32 66617 6Z91 Bow-Willesden
11.39 66568 7V12 Chelmsford-Acton
11.43 221110 5L50 Barton under Needwood-Ilford
11.46 37510+345007 5Q50 Old Oak Common-Ilford
11.56 66513 4E24 London Gateway-Leeds
12.02 66560 4M63 Felixstowe-Trafford Park
12.12 720543+720548 5Q91 Wembley-Ilford
12.28 66567 4M88 Felixstowe-Ditton
12.44 66541 4L97 Trafford Park-Felixstowe
12th December Acton 09.20: 66090, 66104/10, 66558
Marylebone 10.20: 68008
Wembley LMD 10.30: 68009/15
Wembley Yard 11.10: 37510, 57303, 66170, 67015
86637/38, 90020, 92011/41/43, 720550/56
18th December Stratford:
10.08 66413 4M94 Felixstowe-Lawley Street
10.13 90045+90007 4L89 Coatbridge-Felixstowe
10.25 66513 4M81 Felixstowe-Crewe
10.29 221110 5M60 Ilford-Barton under Needwood
10.34 66723 6O60 Bow-Tonbridge
10.55 755404 5Q38 Liverpool Street-Crown Point
11.09 66529 4L41 Crewe-Felixstowe
11.29 57312+317505+317670 5E46 Ilford-Papworth
11.36 66558 6V12 Chelmsford-Acton
11.52 66414 4E24 London Gateway-Leeds
12.00 66552 4M63 Felixstowe-Trafford Park
12.42 86639+86613 4L97 Trafford Park-Felixstowe
12.49 66540 4M88 Felixstowe-Ditton
13.11 66531 4L36 Wentloog-Felixstowe
13.12 66766 4M23 Felixstowe-Hams Hall
22nd December Leyton Midland Road:
16.37 66424 4L48 Daventry-Purfleet
31st December Leyton Midland Road:
18.42 66849 6C63 Whitemoor-Barking
5th January Leyton Midland Road:
10.29 66544 7V29 Purfleet-Acton
10.29 66420 4L62 Garston-London Gateway
10.33 66302 4M07 Tilbury-Daventry
8th January Stratford:
11.34 59206 6V12 Chelmsford-Acton
11.48 66140 4E25 Bow-Heck
11.52 66594 4E24 London Gateway-Leeds
11.59 66525 4M63 Felixstowe-Trafford Park
12.27 66555 4M88 Felixstowe-Ditton
15th January Leyton Midland Road:
10.36 66570 4L52 Garston-London Gateway
10.40 66122 4M07 Tilbury-Daventry
18th January Leyton Midland Road:
16.20 66031 4L48 Daventry-Purfleet

SHUNTER SPOT



prior to the transfer away of the remaining Cl.91s and Mk4 coaches the two resident Bounds Green shunters were pictured in the snow, 24th January 2021 (Ray Bond)

above 08441, left 08580

ACCIDENTS

The PCA that tipped over in the Sheffield derailment was 10756 which was temporarily lifted onto the platform. It has been determined that it was a track fault that caused the derailment with a number of broken track fastenings allowing the track to spread under the wagons.

SWR 458504 running ecs derailed on the approach to Clapham Jnct sidings on the 1st December 2020 when the

rear bogie of the first coach went its own way over a set of points. The rear four coaches were towed clear by a Cl.159. It was re-railed by midday with the split unit transferred to Wimbledon for inspection.

In the early hours of the 17th January 2021 at 04.42 a rake of 22 wagons ran away from Old Bank Sdgs, Toton, derailing after ½ mile on the catch points at Toton South Jnct. With a fully laden weight of 1870 tonnes the first two wagons, the end wagon being an OCA, ran on to sit across the points fouling the adjacent Erewash running line.

66779 had an altercation with the bufferstop on the Birch Coppice siding and has gone to EML, Longport for repairs to a bent drop plate below the bufferbeam, the bufferstop is no more.. RIP!!

BR SECTORISATION LIVERIES

Part 2: Continuing from Part 1 in the December 2020 issue here are further photos representing the varied liveries of the 1980/90s BR sectorisation.





RfD liveries

above 47349
Thornaby,
5th May 1990
(Colin James)

left 86634
Crewe Electric,
24th June 1990
(Gary Mutton)

below 90037
Crewe
28th April 1991
(Gary Mutton)



above RfD 37053 + 37054 showing the Stratford cockney sparrow depot plaque on 37053, Norwich 16th September 1989 (Gary Mutten)

The list of Railfreight Depot plaques were as follows:

Depot	Description of Pictogram	Represents (where not obvious)
Bescot (BS)	saddle	local leather industry
Buxton (BX)	two millstones	Peak National Park
Cardiff (CF)	goat	
Crewe Diesel (CD)	cat	Cheshire cat
Crewe Electric (CE)	eagle	Eagle bridge
Eastfield (ED)	West Highland terrier	
Eastleigh (EH)	spitfire	built at Southampton airport
Hither Green (HG)	two oast houses (only used on a few locos prior to SL plaque designed)	
Immingham (IM)	star and scroll	
Knottingley (KY)	colliery winding wheel	
Laira (LA)	ship (50149)	Mayflower
Leicester (LE)	panther	
Motherwell (ML)	hammer & anvil	steel industry
Ripple Lane (RL)	torch	burning oil
Saltley (SY)	seagull	staff known as 'Saltley Seagulls'
St Blazey (BZ)	lizard	
Stewarts Lane (SL)	Battersea PS	
Stratford (SF)	cockney sparrow (various versions some not officially sanctioned)	
Thornaby (TE)	kingfisher	
Tinsley (TI)	Yorkshire white rose (two versions)	
Toton (TO)	two PS cooling towers	
Westbury (WY)	white horse	as on local chalk hillside
Not Accepted:		
March (MR)	hare	
Willesden (WN)	greyhound	

Not fitted to locos:

Allerton (AN)

Barry Wagon Depot

Carlisle Currock Wagon Repair Depot

Grangemouth (GM)

Ipswich Wagon Repair Depot

Margam (MG)

Southampton Wagon Repair Depot

winged letter A

galleon

fox

galleon

Suffolk punch horse

kite (wagons)

ocean liner

football club mascot

There have been other plaques used over the years.



*above Railfreight grey liveried 08994 Landore 30th April 1988 (Doug Slater)
below TL Coal 08995 Pantyffynnon 29th September 1990 (Gary Mutton)*





above departmental grey 09010 + triple grey 08740
Stratford
8th May 1993 (Gary Mutton)



left 56003 Toton
16th April 1988
(Gary Mutton)

below 60013 Frodingham
23rd February 1991
(Colin James)

it was a Thornaby training
loco at this time, taken into
BR stock in 1993





above TL Coal with
Toton depot plaque,
56134 Sunderland TMD
5th May 1990
(Colin James)



left RfD European
92022 Crewe Railfair,
27th August 1995
(Gary Mutton)



below RfD European
47344 Thornaby,
7th May 1994
(Gary Mutton)



above 37251 Immingham
23rd February 1991
(Colin James)

right the sole Dutch
liveried CI.50
50015 Laira
14th March 1992
(Gary Mutton)



below Dutch liveried 37185
unknown location, 1994
(Michael Warrick)



INFRASTRUCTURE NEWS

New Lines / Stations / Platforms:

A new platform 0 was opened at Leeds over Christmas 2020.

A new station on the northern outskirts of Torquay, 1¼ miles north of Torre station, to be called Edginswell, is to be built to serve the urban expansion of the town and will start construction in spring 2022. It will be between the A3022 Riviera Way, the same road that passes Torre and Newton Road with the latter being the road access as the A3022 is a dual carriageway at this point though there will be a footway link directly onto the station footbridge.

A new single platform station is being built at Bow Street on the Cambrian Line, Wales 3 miles (as the crow flies) northeast of Aberystwyth. It is being built on the site of a builders merchants south of the former station which closed in 1965. Construction started in January 2020 and is due to open later in 2021. The photo below taken looking south from Blaen Ddol road bridge, the only vantage point, is by Amber Holloway, James' daughter on the 27th December 2020.



Two closed rail routes were awarded funding on the 23rd January 2021 with £760 million for the next phase of the East West Rail and £34 million to re-open the Newcastle-upon-Tyne to Ashington line closed to passengers in 1964. The initial tranche of money for the latter line is for preparatory work. Once finished in 2024 18 miles of existing track will have be upgraded and six new stations built at Ashington, Bedlington, Blyth Bebside, Newsham, Seaton Delaval and Northumberland Park.

Misc News: As part of the recent TfL funding bailout, Crossrail 2 has been dropped from the current spending review freeing up capital to spend elsewhere on public transport.

The fourth track between Bedford and Kettering was reinstated on the 20th December which together with the construction of a fourth platform at Wellingborough will allow an improved timetable.

The 1990s built office building at Knottingley Depot has been demolished as surplus to requirements with DBC operating out of cheaper portakabins.

Due to pre planned engineering work between Hitchin and Peterborough LNER services were diverted via Royston, Cambridge, Ely and March.

The railway south of Stonehaven was closed again on the 15th January 2021 following the partial collapse of a bridge parapet affecting the southbound track, over the River Carron approx 1 mile from the Carmont derailment. The bridge involved there was 325 whereas this 328. With passenger

services suspended between Aberdeen and Montrose, freight services are again being diverted over the top via Inverness as was a trapped LNER Azuma (see front cover). Northbound LNER services are not going beyond Edinburgh and XC beyond Dundee. The anticipated reopening date is the 22nd February 2021.



prevented from heading direct to / from Aberdeen, the Aberdeen Waterloo Yard – Irvine clay slurry carried in 15 TEA and ICA bogie tanks is having to go the long way round over the top above 70803 approaching Keith Station passing the Chivas Bros barrel store on its first southbound trip (from B9116) (09.49) 18th January 2021, below with 70803 still in charge, having passed through Keith Station, is seen passing the Chivas Brothers bonded warehouses on the left and Oakwood Cooperage (Isla Bank Mills) on the right (from Tarmore Road) (15.35) 29th January 2021 it's high time vegetation was cut back here as it looks like the train is going through a green washer, can't be good on passenger carriages for the wagon aficionados the combination of TEA and ICA tanks varies but are from the batches TEA 89100-29 (30) and ICA 33.87.7898.003-037 (26) and I have photographed all bar two TEAs on the service so far



As a civil engineer I am interested in the issues surrounding permanent way and this parapet failure may be a precursor to impending problems with other bridge parapets. Clearly age plays an issue but

if the ballast is continually added over time to maintain track level this builds up and along with the added water retention and the vertically higher dynamic loads of passing trains then this all puts pressure on a parapet not initially designed or reinforced to take the extra side loading from one side only. The higher the load is transferred up the parapet then a failure will occur more easily at the plane where the parapet meets the main structure. This is going to lead to a bit of head scratching if many more structures need to be rectified.

As reported on p58 in the December 2020 issue here is a photo of the Wavewalker employed to construct the new seawall at Dawlish.



above with the Wavewalker behind, 67027 t&t 67023 head west on 1Q18 06.11 Reading – Paignton NR test train via Penzance, Dawlish (15.52) 18th December 2020 (Adrian Roberts)

TRAM, LIGHT RAIL & METRO NEWS

Manchester Metrolink by Geoff Hope:

December 2020: A team of 'trambassadors' has been set up dedicated to helping people to travel safely. They will speak to passengers about guidance and safety measures handing out free face masks and hand sanitizer when needed encouraging off peak travel and contactless payments with the anticipated increase in passengers. In addition a National Disability Scheme will be launched to allow staff to provide extra support for passengers to give them confidence to travel safely. Metrolink have been urged to fine more people instead of handing out free face masks since the coronavirus pandemic started. During December 120 front line staff have been trained to recognize Mental Health awareness, to improve their skills to support passengers in distress.

Funding has been confirmed for a feasibility study to link Bolton to the network, mainly using a disused railway trackbed linking Radcliffe and Bury, with Middleton also keen to join the network. If either of these projects are successful it will be sometime before we see Metrolink in both towns.

Tram 3117 has a new advertising livery, yellow Cyberpunk 2077 a video game released on the 10th December...*might need to change this as I thought the game was pulled due to bugs, ed.*

Early on the morning of the 8th December, tram 3085 was involved in a serious accident with a white van at Ashton West on the Eccles – Ashton service, taking two hours to free the driver from the van.

No injuries to passengers were reported on the tram, but another casualty was an overhead line support pole being damaged. Services were disrupted for the rest of the day. On the 12th December damage to overhead wires affected services between Old Trafford and St.Peters Square for approximately seven hours, all services apart from the Bury – Piccadilly line were affected . On the 14th December all services were suspended again due to damage to pantographs on some trams. Monitoring equipment had been installed to identify the problem and a full inspection of the fleet in service resulted in 5 trams being withdrawn with services restarted mid afternoon. During w/c 28th, 19 incidents were reported involving teenagers between ages of 12 – 15 yrs in anti social behaviour and disregarding lockdown rules on the Airport service. These actions have resulted in all double trams reduced to single and resources being used to strengthen other services.

Tram 3121 entered service on Wednesday 23rd with tram 3122 arriving at Queens Road depot on Saturday 12th.

January 2021: Owing to the lockdown nothing to report with no new trams delivered.

Tyne & Wear:

The new Howden Depot became operational in December 2020 and will be responsible for maintaining the fleet whilst South Gosforth is rebuilt and commissioning the new trains due in 2022.

DE-ICING TRAINS



above 66726 t&t 66721 on 3Y88 Totton Yard - Totton Yard, crossing Fareham Creek (12.34)
7th December 2020 (Chris Addoo)
below 73109 on 6Y68 Tonbridge West Yard - Eastleigh East Yard, Shawford (12.52)
3rd December 2020 (Chris Addoo)



WD AUSTERITY 0-6-0ST LOCO SURVEY - UPDATE

*Though some have already been covered in **TRACKS** under various headings this series will endeavour to fully record the surviving Austerity 0-6-0STs (77) that survive from the 485 built. A versatile loco, they can be found on many preserved railways either working or in a dismantled state. The background to the class was covered in the October 2018 issue of **TRACKS** on p56.*

WD 75141 (139, 68006) [3192 / 3888]:

Featured on p68 in the December 2020 issue above is a view of it at the South Yorkshire Railway on the 27th September 1991 (Doug Slater)



**WD 75019 (168, RRM9, 6)
[2868 / 3883] 'LORD PHIL':**

Featured on p56 of the April 2020 issue left is a view of it in the late 1980s or early 1990s at the Rutland Railway Museum carrying 'COAL PRODUCTS No.6' and still with its Kypkor chimney etc taken by Malcolm Clements.

UNDERGROUND NEWS

London Underground:

The first test passenger train ran on the Northern Line extension from Kennington to Battersea PS on the

19th December 2020. There are two new stations, Nine Elms and the Battersea terminus and these are the first new stations to be added to the line since the 1926 Morden extension

NOSTALGIA CORNER: 1970s



above 73119 with European stock including Wagon-Lit coaches on the Night Ferry leaving London Victoria, 14th July 1977 (Derek Everson)

BARRY SCRAPYARD

Bulleid West Country 4-6-2 34046 'BRAUNTON': Now successfully restored and back running on the mainline (see below) it is sobering to remember when it was a rusting hulk missing most of its parts in Woodham Bros Scrapyard, Barry as seen below on the 21st June 1981 by Malcolm Castell.



Built at Brighton Works in November 1946 for the Southern Railway and numbered 21C146 it was originally streamlined, being rebuilt in 1959. It lasted in service until October 1965 and was one of the lucky locos to find its way to South Wales in January 1966 and ultimately rescue in 1988. This first attempt to save it was beset with problems and it languished in the former Brighton Locomotive Works, Preston Park until moving to WSR in 1996 where 11 years later in July 2007 it returned to steam entering service in September 2008. Mainline

certification followed in 2013 and following the expiration of its boiler ticket in 2017 it was overhauled and returned to the mainline in June 2020. Based at Crewe in the Locomotive Services stable it was briefly given the identity of classmate 34052 'LORD DOWDING' but reverted back in June 2019.

PHOTO SPOT: RAIL TOUR



4-6-2 34046 t&t D1935
on the final steam mainline
charter of 2020 on LSL Saphos
Trains Christmas White Rose 1Z60 Telford - York,
Guide Bridge (10.20) 19th December 2020 (Harold Hull)

RHTT GALLERY

With the final diagrams of the season ended in mid December 2020 here are some last photos of the 2020 RHTT autumn workings.



37419 t&t 37401 on 3S01 09.22
Stowmarket - Stowmarket RHTT,
Wymondham (15.21)
16th December 2020 (Toby Radziszewski)



37218 t&t 37059 on 3S01 09.36 Stowmarket - Stowmarket RHTT, Ely (14.19)
13th December 2020 (Toby Radziszewski)



above 66730 t&t 66724 on 3J01 Kings Norton - Stafford - Euston RHTT, Easenhall (15.02)
8th December 2020 (Colin Pottle)



above 66060 t&t 66116 on
12.01 West Hampstead - Toton
RHTT, West Hampstead (11.56)
10th December 2020
(Eric Salisbury)



above 66114 t&t 66174 RHTT,
Crewe (08.18) 12th December 2020
(Peter Jackson)

right 37401 t&t 37419 on 09.00
Stowmarket - Stowmarket RHTT,
Shenfield (11.15) 18th December 2020
(Eric Salisbury)



37059 t&t 37038 on
3S60 08.37 Stowmarket - Stowmarket RHTT,
Barway (15.43) 5th December 2020 (Toby Radziszewski)



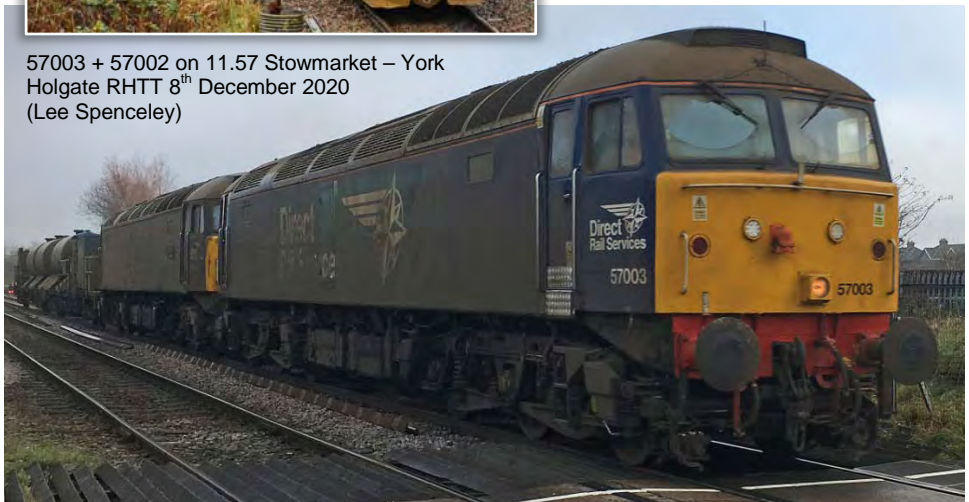
*below 37218 + 37422 +
37038 + 37059 + 37069 on
0M05 11.00 Stowmarket -
Crewe Gresty Bridge, March
(12.23) 21st December 2020
(Toby Radziszewski)*



*above 66434 t&t 37419 on 6Z06 12.15
Stowmarket - York Holgate, March (13.46)
21st December 2020 (Toby Radziszewski)*

With the season over the DRS locos returned to base and the FEAs were moved back to York Holgate.

*57003 + 57002 on 11.57 Stowmarket – York
Holgate RHTT 8th December 2020
(Lee Spenceley)*



COACH SURVEY

This is an occasional series featuring individual or a specific group of carriages.

BR Mk1 Catering Vehicles - RMB: Between 1957-62 BR built 82 Restaurant Miniature Buffets (RMB) in five lots with the first lot built in York and the remainder in Wolverton.

Nos	Lot	Built	Total	Remain	Mainline Reg	Preserved
1801-12	30485	1957-58	12	9		1802-05/07-09/11/12
1813-37	30507	1960	25	13	1813/23/32	1815/16/18/24/26/29/33/35-37
1838-52	30520	1960	15	9	1840	1838/39/42/45/48/50-52
1853-64	30670	1961-62	12	11	1859/60/61/63	1853-57/62/64
1865-82	30702	1962	18	14	1870/99311 [1882]	1865/66/69/71-76/78-80
Totals			82	56	10	46

right Pullman liveried 1804 Bishops Lydeard, WSR 5th May 2015

A high proportion, 68%, of these useful carriages are still extant on the mainline in charter sets and with preserved railways. In fact RMBs form the biggest block of remaining consecutively numbered Mk1 coaches, 1850-57, though there are many blocks of the more numerous TSOs. Remarkably the first and last carriage of each lot survives, all bar 1801, the very first. Two further carriages, 1806 (MHR) and 1867 [977752] (CQ) did survive into preservation but were scrapped in 2001 (arson) and 2013 (surplus).



1803 showing its double bolster BR1 bogies, Parkend, DFR, 9th September 2018

Nearly all RMBs are in use which is the highest proportion of any Mk1s. The majority are in active service (43) with 5 under overhaul and 5 in use as static cafes / shops leaving just 3 stored. Of the latter, 2 are not likely to return to use as RMBs anytime soon, 1816 used as a store at Shackerstone, BAT and the most unlikely, departmental 99019 [1870] which was converted as part of the Chipmans / Balfour Beatty weedkilling train stored derelict at Carnforth, WCR. The other stored RMB is 1872 at

Wansford, NVR. These latter two coaches are the only two not in use out of the 56. Two of those under overhaul (1878/80) will be mainline registered to operate on the NYM Whitby services.



1838 Sheffield Park, BBR, 20th April 2011



WCR owned 1860 showing its commonwealth bogies, Crewe 20th July 2018

Just two RMBs are currently named, 1804 'ARIES' at WSR and 1871 'Howson Bar' at ELR. Four others have had names, 1803 'HAZEL', 1829 'Y DDRAIG GOCH', 1862 'WYVERN BAR' & 1875 'LADY MARGARET'.

As built the first lot received BR1 bogies with all others receiving Commonwealth bogies with the exception of 1851 which had B5 EMU bogies. However over time and particularly in preservation many carriages have had their bogies replaced.

The mainline registered carriages are operated by Riviera Trains (RV) 1813/32 based at Eastleigh Works, West Coast Railways (WCR) 1840/60/61/99311 (with 99019 stored) based at Carnforth, Locomotives Services Ltd (LSL) 1863 based at Crewe, Scottish Railway Preservation Society (SRPS) 1859 based at Bo'ness, BKR and NYM 1823 for operation on their Whitby services. The preserved carriages operate / based on 30 preserved lines with 8 lines having two, SVR owning 3 and ELR five.

Scrapped Carriages:	1814	10/90	1821	11/81	
1801	10/98	1817	04/87	1822	07/81
1806	--/01 fire	1819	09/82	1825	09/81
1810	05/84	1820	07/82	1827	06/83

1828	12/67 acc 11/67	1843	12/89 DB 977001	1858	11/84
1830	09/81	1844	10/88 DB 977000	1867	03/13
1831	12/76 fire	1846	10/76 accident	1868	06/91
1834	01/83	1847	10/98 gb	1877	10/90
1841	09/84	1849	05/84	1881	10/90

1871 Bury Bolton St, ELR, 9th March 2018



Howson Bar

1851 showing the pipework layout on the roof and its B5 bogies, Ropley, MHR 7th June 2015



RAILWAY GLOBETROTTERS

Portugal by Ray Smith: Re the article in the December 2020 issue by Sean Davies, further info has been provided by Ray Smith. On p75 the locomotive at Pocinho is E213. This is not a 2-10-0T but one of the unique 2-4-6-0T. They have four outside cylinders, two on either side. In the Douro valley at Regua around and alongside the turntable are another six of this class with three ex-Yugoslav Railcars 9701, 9710 and 9711 but I can't recall which were which.



above E209, E215 & E210 with E208 just visible to the left behind the van and E209

below either side of the above track, E208, van (see above) Railcar with E201 behind

right the other Railcar tucked away in the undergrowth

all Regua, 21st June 2008





above E214 restored in a compound adjacent to the station, Regua, clearly showing the additional cylinders mid body

below left 0-4-4-0T E170 Tua

below plinthed 0-4-0T E1, Regua

all, 21st June 2008

The reason I was at Regua was to take a return trip behind 2-8-4T 0186 from Regua to Tuan.

We arrived at Regua with plenty of time to see the five steam 2-4-6-0T locomotives that were scattered around and adjacent the turntable. There was also, a small compound with preserved E214 inside and a plinthed 0-4-0T outside.



Our train comprised of a rake of five coaches and our locomotive had problems hauling them, constantly slipping. For this reason a CI. 1150, C 0-6-0DH 1185 was attached between the loco and coaches. We joined our special and headed to Tua. In the yard at Tua was another withdrawn locomotive, 0-4-4-0T E170 (see above middle right).

0186 + 1185 taking water at Regu



0186 on the turntable at Tua



1185 and 0186 at Tua running around train, note E170 in the background, 21st June 2008



job done, the ensemble back at Regua, 21st June 2008



FREIGHT MATTERS

To allow members to keep their copy of **UK Combine Vol.2** as up to date as possible, changes are provided via this spot every month. Please let the Editor Trevor Roots know if you have any amendments or wish pass on any other helpful wagon information.

also see **EASTLEIGH WORKS REPORT** for further updates.

All Stock changes during December 2020 and January 2021 have been incorporated into the new editions of our books now available.

FREIGHT NEWS:

With VTG Rail providing Aggregates Industries with 62 shortened HYA hoppers be formed in rakes of 20, plus two spares, the 51 1986-90 built Bardon JGAs 17101-51 and the 24 1989 built Camas / Bardon JRAs 33.70.6905.080-073 have all gone for scrap.

GBRf have ordered 570 new modular wagons from Greenbrier, Poland for Network Rail, which will start arriving at the end of 2021 though no number details are yet known. Owned and leased by Wascosa the modules will be maintained and owned by GBRf. The split will be 260 Falcon box wagons, 50 big box wagons and 260 flat wagons.

DBC are trialling a revised route for 6E26 Knowsley to Wilton Bins. Still leaving Knowsley at 10.40 the trial route is via Salford and Manchester Victoria rather than Warrington and Stockport to the Calder Valley line. The idea apparently is to save around 2 hours transit time. The photo right shows 60059 + 66124 on 6E26 Knowsley – Wilton passing Belfield Mill Lane around 13.44. The loading is normally around 2000 tonnes so possibly a single Cl.66 would struggle up the bank from Manchester Victoria.



STOCK CHANGES

It is hoped that all major changes recorded below will help you keep the **UK Combine Vols. 1 & 2, UK Pocket Book, UK Locomotives and UK Name Directory** up to date, (numerous pool code changes will not be recorded). In order to compile as accurate and up to date list as possible, can members please pass on their observations, particularly name changes and multiple unit reformations to the Editor, **Trevor Roots**. Where possible, photos of new nameplates will be included as and when a suitable photo is sourced from members.

All Stock changes of which there were many during December 2020 and January 2021 unless shown below have been incorporated into the new editions of our books now available.



LIVERIES

This section will endeavour to show all new liveries / variations or those existing ones where not carried on the stock before. Liveries that become 'extinct' will also be covered. As with names, it may take a while after the livery application before a photo is sourced from members. New liveries may also be shown in other articles (**NEW STOCK** excluded):

left 37263 now in dept grey Spring Village, TSR 17th December 2020 (Paul Sumpter)



above 37422 / 6966, Ipswich 27th December 2020 (Keith Partlow)



above 70001 + 70007 showing the original (left) and revised (right) FL cabside branding, Didcot (10.39) 13th January 2021 (Spencer Conquest)



above 90047 Ipswich 29th December 2020 (Michael Warrick)

below another view of 66113 with its special Key Worker branding showing the opposite side to that on p79 in the July 2020 issue, Ely (14.27) 22nd December 2020 (Toby Radziszewski)



NEW STOCK



above ex-German 66794
hauled by 66742 on Hams Hall
- EML Longport, Walsall
(15.36) 22nd December 2020
(Peter Davis)



left the last of the Cl.195s,
195133 Manchester Piccadilly
9th December 2020
(Eddie Rathmill)

below the first of the Cl.710s,
710101 + 710103 Liverpool St
(14.43) 14th December 2020
(Sean Davies)



ICRS SALES

Orders can be made ideally via BACS, bank details on request from editor@intercityrailwaysociety.org, online via PayPal at www.intercityrailwaysociety.org or by post from ICRS, Mill of Botary, Cairnie, Huntly, Aberdeenshire AB54 4UD Please make cheques payable to ICRS. **Postage to rest of the world will be extra, please request cost on ordering.**

As volunteers we do our very best to dispatch items as soon as possible, but please allow 21 days for delivery, especially when a new book has just been released, or 28 days for embroidered clothing if not in stock. If you have not received your book after that time please **ONLY** then contact **Trevor / Christine** (see p2 for details)

UKRS01, UKRS01W & UKRS05 are A6 size, all others are A5 size. All books are wire bound, allowing them to be laid flat, except the original perfect bound version of **UKRS01** (spine version of PB not shown)



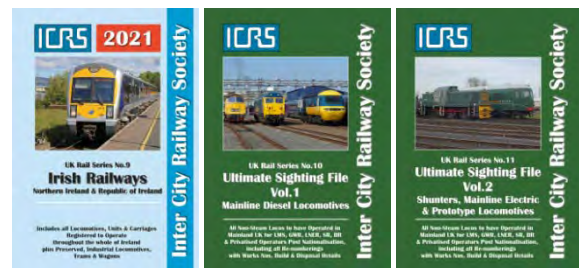
BOOKS: (Members receive up to 30% discount on ICRS books)

Titles:

NEW: (UK Wagons now part of Combine Vol.2)

UKRS01A	UK Pocket Book 2021	SPINE WIRE	A6	1 st Feb21	£8.00	£11.00
UKRS01WA	UK Pocket Book 2021		A6	1 st Feb21	£8.00	£11.00
UKRS02A	UK Combine 2021 Vol.1 – Locos, Units, Trams & UG		A5	1 st Feb21	£11.00	£15.00
UKRS03A	UK Combine 2021 Vol.2 – Carriages, Wagons & TMs		A5	1 st Feb21	£11.00	£14.00
UKRS04	UK Name Directory 2021		A5	1 st Feb21	£9.50	£13.00
UKRS05	UK Locomotives 2021		A6	1 st Feb21	£5.00	£7.00
UKRS09	Irish Railways		A5	1 st Feb21	£7.50	£10.00

Size	Updated to	Member	Non-Member
A6	1 st Feb21	£8.00	£11.00
A6	1 st Feb21	£8.00	£11.00
A5	1 st Feb21	£11.00	£15.00
A5	1 st Feb21	£11.00	£14.00
A5	1 st Feb21	£9.50	£13.00
A6	1 st Feb21	£5.00	£7.00
A5	1 st Feb21	£7.50	£10.00



NEW Lower prices for current USFs

PLEASE NOTE P&P

must be added separately to book & sundry orders (except fitted PB cover)

up to £7.50, **£1.50**, £7.51 to £15.99 - **£2.00**
£16.00 to £59.99 - **£3.00**, over £60.00 - **£6.50**

Details of books and sundries can be found on our website and are shown in **TRACKS** from time to time when released or advertised. Order forms for posting can be downloaded from the website.

OTHERS: NEW LOWER PRICES

UKRS10	Ultimate Sighting File Vol.1 – ML Diesel Locos	A5	11 th Jul18	£9.00	£12.50
UKRS11	Ultimate Sighting File Vol.2 – Shunters, ML Electric & Prototype Locos	A5	11 th Jul18	£8.00	£11.00

SUNDRIES: (same price for Members & Non-members) **Please add P&P to any sundries separately to books**

ICRS branded notebook	75 pages	£2.50	50 pages	£2.00
ICRS pin badge (25mm dia)				£2.50
ICRS printed pen				£0.50
Adjustable clear book covers (A6 fits PB with spine)	A6	£1.00	A5	£1.50
TRACKS Cordex binder (12 issues @ 64 pg: 2015-16) (11 issues @ 64/80 pg: 2019 onwards)			L	£5.00
TRACKS Cordex binder (12 issues @ 32/40/48/64 pg: 2011-14 & 10 issues 32/64/80 pg: 2017-18)			M	£5.00
Polo Shirts: (name & logo) (some smaller sizes in stock / larger sizes on request only)				
(S / M / L / XL / 2XL / 3XL) BLACK / DARK NAVY / NAVY / BURGUNDY / BOTTLE GREEN				£18.00
(4XL / 5XL) BLACK / FRENCH NAVY (DARK) / BOTTLE GREEN				£20.00
Baseball Caps: BLACK / NAVY / BURGUNDY				£10.00

We still have a supply of the original polo shirts in NAVY & WHITE with logo only which can be bought direct from our sales stand for £5.00