

TRACKS





Inter City Railway Society

founded 1973

www.intercityrailwaysociety.org

Volume 45 No.8 Issue 536 Nov 2017

The content of the magazine is the copyright of the Society

No part of this magazine may be reproduced without prior permission of the copyright holder

President: **Simon Mutton** - simonmutton@btinternet.com (01603 715701)
Coppercoin, 12 Blofield Corner Rd, Blofield, Norwich, Norfolk NR13 4RT

Treasurer: **Peter Britcliffe** - treasurer@intercityrailwaysociety.org (01429 234180)
9 Voltigeur Drive, Hart, Hartlepool TS27 3BS

Membership Sec: **Colin Pottle** - membership@intercityrailwaysociety.org (01933 272262)
166 Midland Road, Wellingborough, Northants NN8 1NG Mob (07840 401045)

Secretary: **Christine Field** - secretary@intercityrailwaysociety.org
contact details as below for Trevor

Chairman: filled by senior officials as required for meetings

Magazine:
Editor: **Trevor Roots** - editor@intercityrailwaysociety.org (01466 760724)
Mill of Botary, Cairnie, Huntly, Aberdeenshire AB54 4UD Mob (07765 337700)

Sightings: **James Holloway** - sightings@intercityrailwaysociety.org (0121 744 2351)
246 Longmore Road, Shirley, Solihull B90 3ES

Photo Database: **Colin Pottle**

Books:

Publications Manager: **Trevor Roots** - publications@intercityrailwaysociety.org

Publications Team: **Trevor Roots / Eddie Rathmill**

Website / IT:

Website Manager: **Trevor Roots** - website@intercityrailwaysociety.org contact details as above

Social Media: **Gareth Patterson**

Yahoo Administrator: **Steve Revill**

Sales Manager: **Christine Field** contact details as above for Trevor

Visits Co-ordinator: **Trevor Roots / Christine Field** contact details as above

Contents:

Officials Contact List.....	2
Society Notice Board.....	3
Events.....	4
ICRS Sales.....	80
Regular Current News / Sightings:	
Eastleigh Works Report.....	5-9
Franchise / Network News.....	68-69
Freight Matters.....	71
Infrastructure News.....	25-37
Light Rail & Metro News.....	69-70
Out & About Sightings.....	42-50
Stock Changes.....	72-73
Liveries.....	78-79
New Stock.....	75-77
Transferred Stock.....	74
Traffic & Traction News.....	15-21

Other Feature Articles:

Days Out.....	38-41
Narrow Gauge Matters.....	
Nameplate Survey.....	74
On Shed.....	23
OTP Photo Spot.....	71
Preservation:	
Galas.....	51-67
News.....	24
Photo Spot: Forgotten Loco.....	24
Photo Spot: Gala 1.....	4
Photo Spot: Gala 2.....	21
Rail Tour Photo Spot.....	9
RHTT Gallery.....	10-14
Three Bridges Open Day.....	22-23
Tram Photo Spot.....	70

Front Cover Photo:

31285 (carrying headboard) + 31271 crossing the River Nene at 13.19 approaching Wansford during NVR Cl.31 60th Anniversary Gala, Wansford, 14th October 2017

£3.00 where sold separately

Printed & distributed in the UK by Henry Ling Limited, at the Dorset Press, Dorchester DT1 1HD

SOCIETY NOTICE BOARD

Editor's Comments:

Another bumper 80 pages and as you will clearly have spotted with an accompanying 32 page supplement **TRACKS extra**...only 112 pages to read !! Hopefully the mammoth effort is appreciated. This is what you will get, fingers crossed, in 2018 as the norm for 4 months out of the 6 bi-monthly releases planned. All the up to date news etc will only appear in the main **TRACKS** issues. The last issue of 2017 will be the December issue released in early December and should just be 64 pages. That will give a total of 656 pages for the year from 10 issues, a mixture of 1 x 32, 6 x 64 & 3 x 80 pages, 16 more than was originally planned at the simpler 10 x 64.

With new franchises kicking in and the December timetable service changes due, the railway scene appears to hitting new highs with never ending changes in traction, be it new or transferred stock and new liveries with the responsibility of providing accurate info for **TRACKS** and our books seemingly never ending. The research seems to get more involved every month and is likely to ramp up with the impending massive cascade / possible disposal of stock looming. The more you can help the better. If you spot any errors in the **UK Combine** or **UK Wagons** then please let me know prior to work starting in earnest on the 2018 editions in the New Year. With the **UK Pocket Book** to be released wire bound, as well as the existing perfect bound version, then the basic data will match that in the Combine. For various reasons the 2017 books were out of sync. After several requests we also intend to re-introduce **UK Locos** in 2018 for those who like a separate book for loco haulage.

Errata – Sep / Oct 2017: The middle photo caption on p27 of 51352 should read 51356. DBSO 9711 was shown as scrapped on p67, this was incorrect, it had been transferred to CQ.

Membership Matters: New Members: (* ex-members re-joined)

Darren Bailey (Doncaster), Rich Barlow (Stoke-on-Trent), Cliff Brown (Letchworth), Tony Clift (Abergele), Barry Hargreaves (Preston), Shane Hollingworth (Loughborough), Marcus Jellyman (Old Harlow), Ivan & Stuart Jessop (Bury St Edmunds), Jim Keogh* (Dalry), Barry Knibbs (Kettering), Michael Robinson (Grimsby), Phil Rogers (Banbury), Andy Smith (Manchester), John Talbot (Abingdon), Nigel Varney* (Warrington) - a warm welcome to you all.

Family Membership: We have re-created a new Family Membership where a member can add a child (age 10-16) onto their membership for an additional £5 instead of them having to pay full rate. So for £22.50 (Standard Membership) or £21 (eMembership) both then get one copy of **TRACKS** but it allows both to attend Member Only Visits (normal separate fees apply). Ideally this is best done on joining or renewal and the membership number will be the same for both. This is a way to encourage more younger members and it helps where someone wants to take them along on a visit which requires ICRS Membership. If there are any existing members who wish to switch please contact Colin.

Society Magazine **TRACKS**:

Distribution: **TRACKS** is distributed direct from the printers to members in a clear plastic wrapping with an address carrier sheet (reverse printed with a Renewal / Reminder form if appropriate). If any member fails to receive their copy after one week from the estimated delivery date below then please contact the **Editor**. For current info during the month refer to the **TRACKS** page of our website.

The latest date for articles / info for the **Dec 2017** issue is **Monday 27th November 2017**
with delivery to members after **Saturday 9th December 2017**
please check the **TRACKS** page on the website for date of posting from the printers

Magazine Contributors: (* new this month) Thanks to **Chris Addoo, Bob Anderson, Geoff Arnold, David Berg, Keith Blackman, Mike Brook, Chris W. Brown, Paul Clifton, Danny Coyne, Sean Davies, Peter Davis, Dennis Dey, Martin Evans, Alex Ford, Iain Gardiner, Steve Gillam, Michael Hayman, James Holloway, Geoff Hope, Colin James, Alan Jones, Terry Lea, Steve Lord, Nick MacPherson, Stuart Moore, Gervase Orton, Keith Partlow, Colin Pidgeon, Colin Pottle, Paul Rosser, Mike Rumens, Norman Smith, David Spencer, Graham Stockton, Les Sullivan, Les Steenton, Paul Tisserant, Andrew Turnidge, David Williams, Carl Watson, Bill Wilson & Trevor Roots**. We are sorry if anyone has been missed. Photos not credited are by **Trevor Roots**.

EVENTS

Provisional details for all 2018 events yet TBC.

MEMBERS ONLY VISITS

AGM: Sat 24th Feb 2018 - ELR: Obtaining prices & times with ride and shed visit requested. Likely price £15 but a limit may have to be set on numbers. Exact details in December issue and on our website as soon as confirmed. To help gauge interest can all those interested please email an expression of interest to Christine on the secretary@... email (see page 2) or ring 01466 760724.

Crewe Basford Hall: Sat 14th Apr 2018: Requested but date may change.

Long Marston: Sat 24th Jun 2018: Checking.

Eastleigh Works: Sat 8th Sep 2018: Date confirmed.

OPEN DAYS (to be attended with our sales stand)

DRS Crewe Gresty Bridge Open Day: Sat 21st or 28th Jul 2018:

PRESERVATION GALAS (to be attended with our sales stand)

NVR Spring Diesel Gala: Fri-Sun 6-8th Apr 2018:

SVR Spring Diesel Gala: Sat/Sun 19-20th May 2018: Spot in diesel shed confirmed

OTHER EVENTS (to be attended with our sales stand)

Warley National Model Exhibition – Sat 24th-Sun 25th Nov 2017

PRESERVATION GALA PHOTO SPOT - I



above BR Std 4-6-0 75014 visiting from the Dartmouth Steam Railway arrives at Minehead with the 12.20 Pines Express from Bishops Lydeard during the WSR Autumn Steam Gala (14.08) 6th October 2017 (Chris W Brown)

EASTLEIGH WORKS REPORT

by **Norman Smith** & photos by **Carl Watson**
for the period 1st - 31st October 2017

General: The new Wheelshop being created in the area where London Underground cars had been stored received its first bit of kit at the end of August with a wheel press installed and commissioned (see photo below taken on the 31st August). This was followed by a wheel lathe, boring machine, balancing machine and ovens with supports for the overhead gantry cranes currently being installed (see photo below taken on the 27th October). Commissioning and Training are ongoing and the Wheelshop should be operational by the end of 2017, all being well.



Locos:

47813 brought in 73133 from Bournemouth Depot and then left for Wembley Yard on the 2nd.

73136 brought in Translator Set T5 ADB 975974/978, from Tonbridge West Yard on the 5th.

The cab frame of 4-6-2 35005 returned by road from the Mid Hants Railway on the 18th.

37057 t&t 37116 were on and off site with a NR test train from the 23rd to the 26th.

08887 has had its generator repaired and engine refitted (see right taken on the 27th October).

47812 has been stopped with wheelset problems (see below taken on the 24th October).



OTP:

MPV DR 98914 + 98964 left for Effingham Jct. on the 3rd and returned on the 5th.

MMT4 DR 97504/604/804 came in for monthly maintenance on the 10th then returned to Basingstoke, returning again on the 31st.

Speno Rail Grinder DR 79221-226 arrived for annual maintenance on the 30th.

Having been stored for some while 999800 departed by road to Bombardier Derby on the 31st (see right).

Units:

Siemens Units receiving modifications during Oct: 444014/018/021/024.

73202 brought in 442402/408 on the 4th from Selhurst Depot (see opposite top) for work by Kiepe Electric UK then left for Stewarts Lane.

442410/413 arrived under their own power on the 10th from Brighton Lovers Walk Depot, also for Kiepe.





above 442408 & 442410 and below 442402 & 442413, 10th October





73133 shunting 442408, 21st October
note the revised lights compared to 73202

Wagons:

Wagon Trips in/out during Oct were:

- | | | | |
|----------|---------------------------------------------------------------------------------------------|------------------------------------------------|-------------------------------------|
| 2/10 | FL out | 92552/553/554/557/647, 93483, 97728/740/744 | |
| 3/10 | DBC in | 89018/019, 640904 | DBC out 640909 |
| 5/10 | FL in | 93351, 97703/723/724/734/742/747/750/753/757 | |
| | FL out | 93350/447 | |
| w/e 7/10 | YGBs 980061/082 left by road to Sonic Rail, Burnham on Crouch, having been sold by Raxstar. | | |
| 10/10 | DBC in | 4406/14/20, 70.6790.004-9/036-1, 87.4333.007-0 | |
| | DBC out | 89016, 87.4384.017-1 | |
| 12/10 | FL in | 92561/646, 97738/761/764 | FL out 93299/307, 97724/734/747/753 |
| 16/10 | GBRf in | 503103/119/122/126 behind 66739 | (see below) |
| 19/10 | FL in | 93324/341/421/484, 97773 | FL out 93363, 97761/764 |
| 25/10 | GBRf in | 503118, 640911/921 | |
| 26/10 | FL in | 93297/308/322/402 | FL out 93324/341/407, 97773 |



Coaches:

Mk1 FO 3110 has been overhauled and repainted in chocolate & cream.

Coach Trips in/out during Oct were:

57303 brought in Mk2 BSO 9521 from Norwich Crown Point on the 10th for repairs and then left for Willesden Brent with 9521 ready to leave at the end of the month (see opposite top on the 31st)



Riviera Trains stock moves for this period, including loco:

7/10	67030	UK Railtours	"The Tees-Tyne Express".
9/10	67030	Pathfinder Tours	"The Cambrian Coast Express".
13/10	67030	UK Railtours	"The Pennine Clough".
28/10	66183	Pathfinder Tours	"The Fiddlers Five".

RAIL TOUR PHOTO SPOT

Not covered back in late April / May 2017, the Great Britain X rail tour took place over nine days with seven steam locos used as follows: **Day One:** 4-6-2 60103 '*Flying Scotsman*', **Day Two:** 4-6-0 45212 + 2-6-0 62005, **Day Three:** 62005, **Day Four:** 45212 + 62005, **Day Six:** 4-6-2 46233 '*Duchess of Sutherland*', **Day Seven:** 4-6-0 45699 '*Galatea*', **Day Eight:** 4-6-2 34046, '*Lord Dowding*' + 4-6-0 46100 '*Royal Scot*', **Day Nine:** 34046 + 46100.

On **Day Seven** the 5th May 2017, 74-6-0 45699 '*Galatea*' was seen below approaching Craven Arms at 14.06 (Les Steenton).



RHTT GALLERY

The autumn RHTT season is in full swing around the UK so please keep the photos coming particularly of any circuits not yet featured.



above 66093 delivering FEAs 642031 + 642049 pass Swindon at 13.20 on 6Z41 St Phillips Marsh – Didcot, 17th October 2017 (Colin Pidgeon)



left 66745 moving a solitary FEA RHTT wagon passed Bescot at 11.38, 26th October 2017 (Paul Clifton)



above 57306 t&t 57303 pass Ipswich at 08.50 on Stowmarket - Stowmarket via GEML RHTT 25th October 2017 (Keith Partlow)



66170 t&t 66093, obscured by the growing forest of steel, pass Maidenhead at 11.42 on RHTT 5th October 2017 (Graham Stockton)



above MPV YXA DR 98968 + 98918 on 3S91 05.00 Horsham - Horsham RHTT passing Eridge at 09.25, 21st October 2017 (Colin James)



above & below
66732 t&t 66730 3W90
05.56 Tonbridge to
Tonbridge RHTT
passing Eridge at 10.39,
21st October 2017
(Colin James)



above 67002 t&t 67022 on 3J92 Toton - West Hampstead RHTT passes Wellingborough at 10.13 20th October 2017 (Colin Pottle)





left 'A' Stock Rail Adhesion Train (RAT) with 5110 leading next to stabled 'S' Stock 21073, Watford Met (01.20) 18th October 2017 (Colin Pottle)

right 66174 t&t 66154 on 3J92 Toton - West Hampstead RHTT approaching Wellingborough at 10.11 18th October 2017 (Colin Pottle)



below tripcock fitted 66017 t&t 66001 passing Rickmansworth at 08.37 on 3J04 Aylesbury - Marylebone RHTT, 21st October 2017 (Colin Pottle)



left
MPV DR 98908 + 98958 passing Leamington Spa at 13.51, 5th October 2017 (Graham Stockton)



above MPV DR 98913 + 98963 passed Clapham Jct at 10.08 on RHTT duties from Effingham, 28th October 2017 (Andrew Turnidge)

right 37059 t&t 37069 Stracey Arms (13.24) 17th October 2017 (Stuart Moore)



below 66009 t&t 66174 arrived at Foxton passing the signal box at 11.52 with 3J32 10.17 Harringay Up Rev Sidings - Harringay Up Rev Sidings RHTT. The train then reversed with 66174 leading 1st November 2017 (Keith Partlow)





66434 + 66426 passed Ipswich at 13.25 on 11.30 Willesden Brent - Stowmarket for RHTT duties, 26th October (Keith Partlow)



above 'D' Stock Rail Adhesion Train (RAT) 7123 + 8010 + 17010 + 8123 + 7010, Neasden Depot, 3rd November 2017 (Colin Pottle)

TRAFFIC & TRACTION NEWS

August 4

97303 + 97304 passed Walsall at 15.30 on 13.42 Derby RTC – Colham ISU (David Williams)



4-6-0 45212 t&t 33207 crossed Wallington Viaduct, Fareham at 11.20 on 1Z67 0739 West Brompton - Swanage via the Portsmouth Direct line (see photo at end)

October 5

57303 + 57306 + 37716 + 37059 + 37069 passed the disused Thefford signal box at 15.09 on OP10 10.30 Crewe Gresty Bridge - Norwich (Keith Partlow)



October 7

67005 Doncaster West Yard (09.55) (Nick MacPherson)



October 8

66058 t&t 66059 passed Tame Bridge Parkway at 08.23 on 6P01 Smethwick Galton Bridge - Bescot (Peter Davis)



October 9

70816 + 66850 passed Eastleigh at 20.18 on OV31 Eastleigh East Yard - Westbury Down TC (Chris Addoo)



October 10

68028 arrived at Bescot at 13.55 on engineers working from Crewe (David Williams)



4-6-2 46233 passed Swindon at 14.20 on 1Z73 Southend - Gloucester (Hanwell Bridge loop - Gloucester return). Note it now carries a yellow cab stripe (Colin Pidgeon)



October 12

60007 passed Walsall at 14.44 on 6E79 Wolverhampton Steel Terminal - Immingham Sorting Sidings (Peter Davis)



70815 passed Wellingborough at 10.29 on 6L44 Oxwellmains - West Thurrock (Colin Pottle)

October 13

66108 passed Nuneaton at 13.03 on 6V92 Corby BSC - Margam TC (Peter Davis)



66502 passed Wellingborough at 13.08 Toton - Toton via St. Pancras with RILA (Colin Pottle)

October 15

90041 was seen at 09.30 on refurbished bogies at Leeds Midland Road Depot and has since returned to service (Andrew Turnidge)



October 18

66621 approached Wellingborough at 10.13 on 6L44 Tunstead - West Thurrock (Colin Pottle)

57312 t&t 57301 passed Swindon at 13.40 on 1Z57 Birmingham International - Coventry Northern Belle (see photo at end)

October 17

66522 passed Swindon at 10.05 on 4L30 Bristol - Felixstowe (Colin Pidgeon)



66177 passed Wellingborough at 09.43 on 4D32
Elstow - Mountsorrel (Colin Pottle)



D9002 + D6700 passed Pinchbeck at 10.09 on
OZ55 York NRM - Alton (Gervase Orton)



4-6-2 60103 passed Pinchbeck at 13.56 1Z52
York - Peterborough (Gervase Orton)



October 19

70814 approached Wellingborough at 09.59
through the fog at 6L44 Oxwellmains - West
Thurrock (Colin Pottle)



October 22

70817 passed Swindon at 13.00 with
autoballasters on 6C27 Athelney Crossing -
Hinksey Yard (Colin Pidgeon)



October 23

92033 was seen at 23.21 at Glasgow Central
having brought in the Caledonian Sleepers (Iain
Gardiner)



October 24

66614 arrived at Walsall at 14.42 with the 09.19
cement from Hope Earles Sdgs (David Williams)



October 24

68006 arriving at platform 2 Edinburgh Waverley
at 17.13 on 5L69 ecs from Motherwell TMD
to form the 17.18 to Cardenden (Iain Gardiner)



October 25

66745 passed Walsall at 13.49 on 6G16 Cliffe Hill Stud Farm - Bescot up Engineers Sdgs. Note the new OHL masts recently erected as part of the electrification from Walsall to Rugeley Trent Valley. (Peter Davies)



pantograph is up on the first coach 975091 'Mentor' behind 37421 for testing the OHL on this route (Iain Gardiner)



October 26

37259 + 37425 passed Walsall light engine at 14.47 on Crewe Gresty Bridge – Berkeley CEGB. Note new OHL mast as above (David Williams)



October 27

87002 was seen at 22.59 in platform 9 Glasgow Central having brought in the CS ecs (Iain Gardiner)



66953 passed Tamworth HL at 13.28 on 6G65 Hope (Earles Sidings) - Walsall Freight Terminal (Peter Davies)



57305 passed Tamworth HL at 14.32 light engine (Peter Davies)



37421 t&t 37025 were seen at Glasgow Central at 23.08 about to depart from platform 10 on 130C Mossend Down Yard - Mossend Down Yard via Ardrossan Harbour. Note the

October 29

60019 was seen arriving at Bescot at 09.34 on a engineers working from Nuneaton (Paul Clifton)



October 31

68025 passed Newton Abbot at 10.38 with a rake of five Mk3 coaches running as 5Z63 Laira TMD Fuel Road - Crewe Carriage Sidings to be used for TPE training with t&t Cl.68s (see photo at end)

November 1

56303 + 56301 wait to depart Foxton at 12.39 after reversing into the station with 6Z17 12.28 Foxton Exchange Sidings - Wembley empties from Barrington (Keith Partlow)



November 2

70817 passed Cambridge at 13.43 on 6L37 10.00 Hoo Jnct - Whitemoor hauling two MLAs (see photo at end)

November 4

56113 + 56096 passed Swindon at 10.05 on 6C22 Filton Jnct - Hinksey Yard with 56113 clearly showing its use on RHTT duties !! (Colin Pidgeon)



70803 passed Swindon at 18.45 on 6C21 Dr Days Jnct - Hinksey Yard. This is the first time it has been featured since repair (Colin Pidgeon)



66771 passed Pinchbeck at 15.46 on 5X89 Slade Green T&RSMD - Doncaster Works Wagon Shops. It was running 8 minutes late amongst all the diverted main line passenger trains (see photo at end)

News from Norfolk (Stuart Moore):

The Tunstead to Trowse Freightliner stone trains have continued to be infrequent this month. Among the operations this month have been 66587 on the 11th and 66601 on the 26th. The stone trains from Peak Forest to Norwich Yard have also been infrequent this month with 66143 seen on the 4th and 66161 on the 25th.

There was a bit of a DRS festival in Norwich Yard on the 5th October. Together with 37405/425 on the short set and 37419 in the Royal Dock, 37059 + 37059 + 37716 + 57303 + 57306 arrived light from Crewe (see photo elsewhere and at end). The 37/0's and 57/3's were to be moved to Stowmarket for the RHTT season and 37716 was for the short set. 37218 had also arrived in Norwich by 16th October on standby for the RHTT.

The RHTT season began on the 16th with 57303 t&t 57306 on 3S01 Stowmarket - Stowmarket, this year via Cromer and also a run to Great Yarmouth, out via Acle and back via Reedham. The locos allocated to the RHTT's at the beginning of the season were: 37059/069, 57002/007, 57303/306. Within a few days 66421/424 had joined in to operate the fourth set allocated to Stowmarket. By the 31st 57303/306 were removed off one set and moved to Norwich and replaced by 66426/434.

37425 was removed from the short set to go to Derby for 'Caroline duties' and was replaced by 37419. However, its use was short lived as it apparently failed and was replaced by 37716. However, its use was also short lived and by the

20th it was back on the short set replacing 37716 which was returned to Crewe on the 24th.

The monthly structure assessment train ran on the 12th October again powered by 37057 t&t 37254.

There has been quite a bit of engineering activity this month with track replacement in Great Yarmouth during the half term week (21st-28th) which saw 66743/769/775 all present in the station area on the 21st. Track work was also carried out towards Lowestoft over the weekend 27th-29th which had 66752/756/760 allocated to it. The work is to prepare for the replacement of the semaphore signalling and the removal of the short platform 1 track, as apparently it is going to be too short for the new units on order.

4-6-2 70013 'Oliver Cromwell' was used to run a tour from Norwich to Rowsley on the 10th October (see above). It was supported by 47746 which

returned the tour to Norwich from Peterborough where 70013 was removed.



The other tour this month was supposed to be 4-6-2 60103 on the 18th with an evening dining tour from Ely to Norwich but it was failed on an earlier tour at Peterborough and sent to the Nene Valley Railway for repairs. Instead WCR 47760 was sent to Norwich with the ecs where it stayed until the 20th when it ran to Southall. The morning tour from Norwich to Diss and the afternoon Norwich to London due to operate on the 21st have been rescheduled for the 11th November.



37059 + 37069 + 37716 + 57303 + 57306 & 37419 Norwich (16.27)
6th October 2017 (Stuart Moore)



70817 Cambridge (13.43) 2nd November 2017 (Keith Partlow)



4-6-0 45212 t&t 33207 Wallington Viaduct, Fareham (11.20) 4th October 2017 (Chris Addoo)

68025 with a rake of four former 'Pretendolino' coaches
11048/12011/12122/12138 & ex-GA 10229,
Newton Abbot, 31st October 2017 (Chris W Brown)



PRESERVATION GALA PHOTO SPOT - 2



above 4-6-0 7822 'Foxcote Manor' being turned on the turntable during the Autumn Steam Gala,
Minehead WSR, (13.16) 6th October 2017 (Chris W Brown)

THREE BRIDGES DEPOT OPEN DAY

by **Chris Woolf**

To mark the second anniversary of its opening and in line with its general approach of community engagement, Siemens opened the Three Bridges Traincare Depot to the public on the 14th October 2017. I was particularly interested to go along having watched the construction of the depot on my daily commute from Horsham to London Victoria. The buildings are not the prettiest – lots of grey and tall metal railings everywhere.



700128 & 700024 (Chris Woolf)

There was a very healthy attendance despite the half mile walk from the station, there being no parking at or near the depot. The wait in the queue to enter the depot was around an hour and the closing time was put back by an hour to allow all to get in. Entry was free with money being raised for their two partner charities Mind in Haringey and St. Catherine's hospice.



700009 with 700024 and 700128 (Chris Woolf)

Three Bridges Depot together with Hornsey Depot is responsible for maintaining the new Siemens Desiro City CI.700 EMU fleet operated by Govia on the Thameslink route. The main depot has 5 roads, long enough to take 12 car units, with 700009/024/120/123/128 present for the Open Day. There was a prescribed route for seeing the Depot which involved walking through one of the 12 car units, with the opportunity to view and sit in the drivers cab. After this you could view the underneath of

a unit from the maintenance pit and see where maintenance work was carried out. There were also a display of the impressive real time information system which shows the location of all units and reports back on performance and any faults. There were a lot of staff present, who were enthusiastic and very happy to answer questions.

There were a few other units on site including 700015/044/137. There were also several CI.700s in the sidings northwest of Horsham station, the first that I have seen there, presumably stabled there because of the Open Day. These sidings were built within the last 2-3 years for the planned 2018 introduction of direct Horsham - Peterborough Thameslink services. They have been largely un-used so far, though 3 CI.377/5 units were there for a few weeks earlier in the year.

An interesting visit but the clean light high-tech (but not soulless) environment is so far removed from my early steam shed memories.

ON SHED



ScotRail Corkerhill Depot *above* 158704 inside shed 4 (06.21)
below 156513 + 156508 + 156501 inside shed 1, 20th September 2017 (Iain Gardiner)



PRESERVATION NEWS

A1 Locomotive Trust: The Trust which operates 4-6-2 A1 60163 *'Tornado'* and is building 4-6-2 P2 2007 *'Prince of Wales'* is planning to move to a new expanded base using one of the oldest surviving engine sheds in the world, Whessoe Road built in 1861 by the Stockton & Darlington Railway (S&DR). It is 100 yards north of its current base and can easily be connected to the main line via an existing signalled siding. A new workshop, turntable and sidings for the Mk3 charter stock are to be built. It is hoped to have it ready to celebrate the 200th S&DR Anniversary in 2025 with a stipulation that it will be publicly accessible on Open Days.

Electric Railway Museum, Coventry: The largest collection of preserved units in the UK is no more having closed its doors for the last time on 8th October 2017. It was forced to close by the local council who refused to extend the lease as they required the land for redevelopment. The 32 EMU / DEMU carriages and various other items of stock including 5 industrial locos will be dispersed as no single site could be found to house the collection but most have found a new home. Once details are confirmed their relocations will be advised.

PRESERVATION PHOTO SPOT: FORGOTTEN LOCO



D5353 Ropley, MHR
22nd October 2017 (Colin James)

this loco has been sold and is to move north to CAL but is going to need a lot of TLC to return it operational condition having been stripped to remove asbestos

INFRASTRUCTURE NEWS

Aberdeen – Inverness Line Upgrade by Alan Jones & Trevor Roots:

The report in the Sep / Oct 2017 issue highlighted major works around Elgin and Forres that have progressed to near completion, culminating in a ten day blockade from the 7-16th October 2017 to complete the major engineering works at Elgin and Forres. Months of planning and weekend closures leading up to that event have seen more locos in Elgin Yard than the last two years put together, including the first visit of a Cl.70. The following report is largely by Alan Jones who witnessed the loco activity involved with the works with photos by Alan and myself... *I was so busy and away so much that I missed all but the last of the loco workings, ed.*

The scope of work was outlined in the last issue but has seen the elimination of all mechanical signalling and installation of LED signalling and mechanical pointwork between Nairn and Elgin with routing transferred to a new Highland Route panel at Inverness Power Box. Forres and Elgin West signal boxes have been demolished, the latter was the most northerly working box on the UK network, that honour now passes to Keith.



platform extensions showing the new tactile yellow studs, Elgin 20th October 2017

In Elgin, works included the extension of the passing loop by a total of 400m equally added to either end of the double track section through the station, involving the removal of Elgin West signal box and replacement of Wards Road level crossing. Both platforms have been extended at the western end to allow six car formations including the forthcoming short HST sets. Sidings have also been rationalised in Elgin Yard to allow a work base to be created.

right the looking east (compare with the same view in the Jul / Aug 2017 issue) with the extended double track through the widened The Wards level crossing showing new signalling and signing

Loco activity started in February with route learning trips to the Yard at Elgin with 67013 being the usual loco. The loco would arrive from Aberdeen and traverse the level crossing, then shunt back to the Yard before going on to Milburn Yard in Inverness, working back later in the day.





By summer there was a working to Elgin most weekends with locos and material arriving on Friday and returning to Millerhill in the early hours of Monday morning. Early workings were always in the hands of DBC, but in the final couple of months all freight companies apart from GBRF chipped in with workings.

*left & above 66099 t&t 66128 Elgin (10.38)
9th April 2017 (Alan Jones)*



Locos observed were: (more than one working shown in brackets): 60021/76/85(2), 66001/07/14(2)/15/30/31/37/50(3)/61/67/82/92/93/99/101/107/117/122/127(2)/128/131/140/142/148/160/164/171/208/423/424/430/555/565, 70804

*right & below
60021 t&t 70804, Elgin,
17th September 2017
(Alan Jones)*



Works started at Forres at the turn of the New Year with contractors clearing track and levelling the ground at Forres Yard, and as the year progressed the new station took shape but it was hard to see what was going on from the existing station and adjacent A96 as it was hidden behind massive piles of earth. See the photos in the Jul / Aug 2017 issue.



looking east from Elgin station platform 2 with the entrance to Elgin Yard on the left *above* the extended loop 20th October 2017 *below* the previous loop with 158720 + 158713 passing the semaphore signal, 27th March 2016, note the derelict Elgin Central signal box beyond the central bridge pier of the A941 New Elgin Road





looking east from the A941 New Elgin Road just east of the station showing the derelict Elgin Central signal box

before *above* 23rd May 2015, showing a neat and tidy yard
 after *below* the extended loop to just short of Linkswood Road bridge showing the relocated radio mast and a not so tidy yard, 25th October 2017



after *right* looking west from Linkswood Road with 158712 approaching the end of the loop, showing the former GNS station platform canopy (glazed multi-pitched roof) to the right abutting the A941 New Elgin Road and the top of the station lifts above the road bridge





looking west from Elgin station platform 2 showing the derelict City Corn Mill (never used for distilling) before *above* the previous scene with 158713 + 158720 coming off the single line section just to the rear of the train having passed Elgin West signal box and approaching semaphore signals (the righthand one is on the floor in the above photo), 27th March 2017
 after *below* the extended loop and new signals curving round to the widened level crossing on the left where the signal box has gone, 20th October 2017



At Elgin work on the platform extensions started in earnest in the summer of 2017 and as the blockade approached new signalling and track appeared along with various infrastructure improvements. Then as the blockade started, around midnight on Friday 7th October Elgin West signal box was taken out of use. Before then 60075 t&t 60085 had arrived with a ballast working and shunted into the yard. By mid morning on the Sunday the orange army had made short work of demolishing the signal box and the level crossing, with the debris being loaded onto road trucks. Track had been lifted east of the station and the trackbed for the extended loop was excavated from the station to the level crossing to connect to that already laid as seen in the Jul / Aug 2017 issue. As the week progressed infrastructure was laid and the signals tested. All track, apart from the short stretch in platform 2, was replaced. Friday the 13th saw 66565 arrive with a ballast train and Tamper DR 73904. (see photo of this elsewhere).

60076 t&t 60085 with MRAs
Elgin Yard
20th October 2017



60085 t&t 60076 Elgin Yard
20th October 2017



The station and infrastructure were handed back to ScotRail over six hours late on Monday 16th October 2017 due the inclement weather. Some work is still required to finish off the project, with fencing still to be completed along with re-instatement of the public footpath between the level crossing and the station. The track at the throat of the yard was lifted for a short while trapping the Cl.60s in the position (see above) but they finally escaped unseen sometime around the 24th October.

The following views show The Wards level crossing and Elgin West signal box before and after...*frustratingly I only ever photographed this signal box on one occasion and never got the token exchange, ed.* Note the City Corn Mill has been tidied up as it has planning permission with ancillary buildings removed from the central core.



before *above* looking west showing how narrow it looked with the token exchange steps either side of the single track, 1st October 2013

after *below* the signal box was to the right of our car parked on the left, 21st October 2017





Moving over to Forres, work to construct the new station and the new 1.5km loop was largely completed but the blockade allowed all track to be lifted through the existing station. The disused platform 2 wall was demolished and the gap between the platforms infilled. Contractors started work on the new station approach using the existing junction with the A96 and the access road to the signal box which required its demolition on the morning of the 10th October 2017. To shut the level crossing and allow work on replacing the bridge over the Burn of Mosset with double track, required the new road, Benromach Way, over the railway to be completed. The road junction with the A96 breached the existing station platform. This new road provides a new route over the railway connecting to Waterford Road to replace the level crossing. Pedestrians can use the route via the station footbridge and a path into the retail park.

By the end of the blockade a fleet of JCB's had moved the mountain of earth and managed to landscape the area around the new station approach. Work started on demolishing the old station on the 18th October and it had been completely levelled on the afternoon of the 25th October.

The result of the re-signalling and removal of Elgin West and Forres signal boxes has seen the end of token exchange on this line.

The infrastructure upgrade is only part of a massive investment on the line which 'goes over the top'. Future work will see the track doubled between Inverurie and Aberdeen with a new station built at Kintore. West of Nairn a new station is to be built at Dalcross for Inverness Airport. The current 2 hourly end to end service with extra commuter services at either end will be upgraded from the December

2018 timetable to hourly from Elgin to Inverness and once fully completed a half hourly service is planned between Aberdeen and Inverurie in 2019. The introduction of short length HSTs will cover the end to end services aided by the usual DMUs for the commuter services. Stabling will be undertaken in Elgin Yard to stop the wasteful ecs positioning trips from Inverness for the early services west.



looking west from a position on the platform where Benromach Way breached before *above* 23rd June 2017, after *below* 21st October and 25th October 2017



a couple of hours after this was taken there was nothing above ground



looking west from the same spot as the previous page with the A96 to the right before *above* the start of the loop by the signal box just visible in the middle distance with White's to the left and after *below* all gone and severed by Benromach Way with White's behind the excavator for reference



above looking east from the new station footbridge with White's on the left then the former level crossing of Inverene Road across the Burn of Mosset (see closer view opposite top), now closed and blocked off where the yellow road / railer is at its junction with what is now the station access road but was a spur to the signal box which stood between the road / railer and the car, 20th October 2017



above the former level crossing in front of the beams carrying the double track over the Burn of Mosset, 21st October 2017



a clear THEN & NOW photo looking east with *above* 158723 exchanging tokens at Forres signal box on the 30th September 2009 and *below* from the same spot on the 25th October 2017 with the loop and box replaced by the new station access road
note the old yard semaphore signal in the photo above denotes the alignment of the new double track which is behind the fence in the photo below



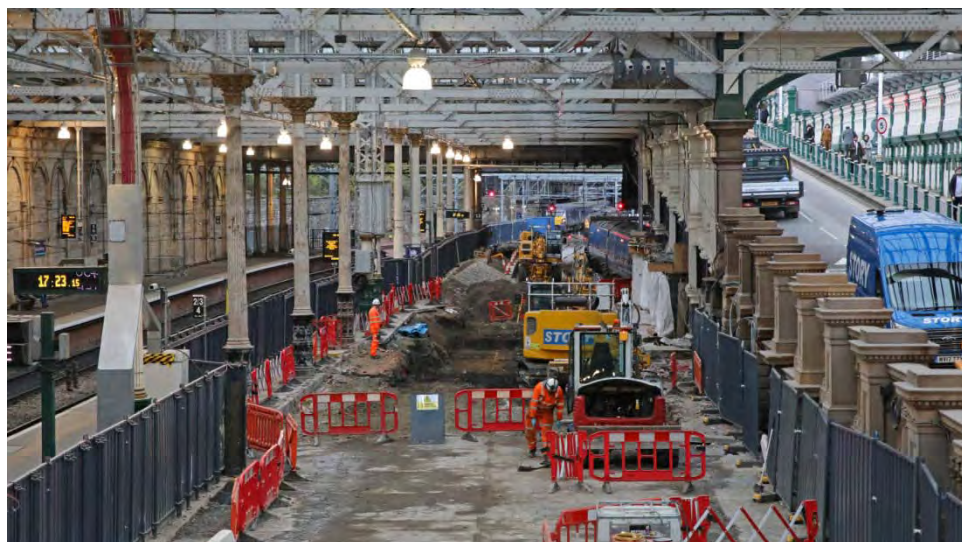


the new Forres station looking east *above* from Benromach Way, the new road crossing the railway and *below* from the turning circle



above looking west from Benromach Way showing the change from double track to the previous single track to cross the River Findhorn and the previous single track alignment on the left, 21st October 2017

Edinburgh Waverley: The following photos taken by Iain Gardiner on the 10th & 23rd October 2017 show the progress on extending platform 12 with removal of the buildings opening up the view westwards from the overhead walkway.



Misc News: A new 6 track servicing facility for Northern Rail DMUs has been opened in the former King Street Coal Yard, Blackburn. Opened on the 27th October 2017, it can handle up to 30 units.

An 11 week blockade starts on the 11th November closing the lines from Preston to Blackpool South and North involving complete re-signalling, closure of signal boxes, electrification to Blackpool North track upgrades and station improvements. The line to Blackpool south will re-open on the 28th January 2018 and that to Blackpool North on the 25th March 2018.

DAYS OUT

Humberside by Colin James:

I made a 2 day visit to Humberside on Friday 6th & Saturday 7th October to visit the Scunthorpe Steel Works site. Friday was spent at Doncaster, Barnetby & Melton Ross picking up the freight services. Disappointingly the iron ore and coal trains were not running to Scunthorpe on those 2 days.



above 66711 southbound through Doncaster platform 4 at 10.20 on 4D01 08.00 Eggborough PS – Doncaster Down Decoy Yard empty coal train, 6th October 2017

left 90036 departing Doncaster platform 1 southbound at 11.17 on 1A25 10.45 Leeds – London Kings Cross Virgin Trains East Coast service, 6th October 2017



below VolkerRail ZWA Tamper DR 73946 southbound through Doncaster at 11.19 on 6xxx 10.15 Scunthorpe Frodingham – Worksop Down Reception Rd, 6th October 2017



After picking up a couple of freights at Barnetby on Saturday morning the rest of the day was spent at Scunthorpe with an organized visit to the Steelworks and a steam hauled three brake van trip around the internal rail network covering many of the available lines. Three brake vans were used for the tour were ex-BR Toadfit BSC 7605, Toadfit CAR B95160, Shark ZUV DB993289



above 73970 sporting recently fitted Dellner couplers, to operate the new Mk5 CS coaches, approaching Doncaster at 12.55 working the 0Z73 07.35 East Craigentenny – Doncaster Roberts Rd light engine move, 6th October 2017

left 66772 passed westbound through Barnetby at 14.15 on 6M81 13.45 Immingham HIT – Ratcliff PS loaded coal train, 6th October 2017

below 60007 passed Melton Ross eastbound at 14.48 on 6E54 10.34 Kingsbury – Humber empty oil tanks, 6th October 2017



Since a visit made 2 years ago, many of the diesel shunters based at the Appleby & Frodingham Rly Preservation Society (AFP) site have left, leaving a smaller core of working locos. Operational locomotives are Avonside 0-6-OST 3 'Cranford', Peckett W5 0-4-OST 1 & YEC Janus 0-6-ODE 1, plus the 2 car CI.108 DMU 54207 + 59245. Locomotives under repair were YEC 0-6-ODE 'Arnold Machin', Hunslet Austerity 0-6-OST 22 & Fabryka (Poland) 0-6-OT 3138. Also on site was observation saloon DM 395280 under restoration.



66040 t&t 66061 passed
Melton Ross westbound at 16.09 on
6D54 15.32 Killingholme – Kellingley
Colliery empty box wagons, 6th October 2017



above Avonside 0-6-0ST 3 'Cranford', built 1924, running round the brake vans at 11.01 in the Frodingham platform



above CI.108 59245 + 54207 stabled in the AFP preservation sidings at 11.12



above stored 81 (20056) at 11.12

left YEC Janus 0-6-0DE No.1 in the AFP preservation site yard at 11.11

below Peckett W5 0-4-0ST 1 inside the AFP preservation shed at 13.30
all photos by Colin James



OUT & ABOUT

by James Holloway

*For clarity, steam locos are now shown in red. To be more helpful for those interested in where stock was exactly, can I ask all contributors who list trip sightings over long distances, to please add all locations when submitting to James. Please also ensure your sightings reach James a few days before the press deadline, see **SOCIETY NOTICE BOARD**...ed*

James Holloway:

9th October: Nuneaton 14.18-14.54:

66571/953, 70812, 387164/165, DR73806/923

18th October: Nuneaton 14.00-15.05:

66067, 70806, 387166/167 on test, DR73806

25th October: Barnt Green 15.54:

68002/33 Bridgwater-Crewe flasks

Danny Coyne:

1st August: Farington Curve Jct 09.00-09.30:

56096/105, 88007, 150134, 156420/441

Acton Bridge 10.25-12.45:

66069/115/154/510/544/714, 70004/804/806

86622/639, 90024/28, 350110/114/235/255/259

350370, 390003/016/049/117/136/141/151/152

Crewe Greysty Bridge 13.55:

37059/218/403/422/606/609, 57303, 68012, 88009

Crewe Casey Lane 14.15-18.30:

37884, 47746, 57301/306, 66086/108/137/413/426

66504/545/548/562/567/716/722/726/957, 70003

70004/020, 221103/05/06/10/11/13/16-18/42/43

319370, 350114/124/235/240/255/256/259/370

390002/009/013/043/045-047/115/118/121/123

390126/129/131/132/138/151/152/154/156/157

8th August: Greysty Bridge, Crewe 09.35:

37059/422/606, 57303/309, 68002/26

Crewe Station 10.05-10.25:

150235, 153326, 175108, 221112/42, 350243

390115/18/28

Stafford 10.40-17.58:

57301/306, 66086/125/142/303/514/516/536/544

66545/591/596/702/778, 67018, 70003/010/019

86605/612, 90016/24/28/45/46/48, 220002/04/07

220009/10/17/22/23/27/28/32, 221101/03/04/07/10

221112/14/16/17/19/27/30/32/36/38/41, 350104

350106/110/113/115-118/123/127/234/240/252

350261/369/375/376, 390001/005/008/013/040

390042/043/046/049/050/112/118/119/121/126

390127/130/132/134/137/141/48/151-154/156/157

12th September: Acton Bridge 09.40-12.05:

37884, 57311, 66025/079/139/176/523/547/601

70004, 90020/34/44/45, 350108/232/250/252/262

350263/266, 390127/137/151

Crewe Station 12.55-14.25:

57311, 90016/28/48, 153357/67/76, 175008/106

175109/110, 221101/05/42/43, 323227/31/36

350101/123/125/250/252/262/266, 390009/013

390042/122/128

Crewe Greysty Bridge 14.35:

37609, 57303, 66425/427/428, 68005/27, 88005

Basford Hall, Crewe:

66510/531, 86608-618/622/627/901, 90046/49/50

Chorlton 15.20-18.10:

66526/558/568/708/774, 70004/015, 221104/07/10

221112/13/18, 325008, 350108/232/238/250/254

350263/266/267, 390004/011/020/114/118/122

390124/125/128/131/141/149/152/154

17th September: Acton Bridge 09.45-12.05:

57311, 66041/103/182/185/519/528/544/710

90044/49, 319450, 350113/115/117/122/129/248

350263, 390040/112/117/127/135/156

Crewe Station 13.00-14.20:

90020/28/34/45/46, 150255, 153302/20/26

175002/103/114, 220024/029, 323228/33/34

350102/113-115/117/129/234, 390011/020/040

390046/119/130/138/151/154/156

Crewe Greysty Bridge 14.35:

37069, 66426/434, 68027/31/34

Crewe Basford Hall 14.45:

66548, 86607/609/632/901, 70004/005/019, 90016

Chorlton 15.15-18.30:

66100/414/512/519/569/593/596/702/708/774

70014/017, 221102/09/11/13/15/17/18, 325002/04

350113/115/117/122/129/248/253/263, 390011

390016/020/104/123/124/128/131/134/136-138

390152/154

22nd September: Skipton 11.30-14.25:

47760, 57315, 66096/729/760, 150222, 153317/32

158845/907, 322484, 333001-04/06-08/10/12/14

26th September: Acton Bridge 09.30-13.32:

37219/421, 66015/035/115/197/541/544/623/708

66716, 70004, 86612/639, 90019/24/48/49

221115, 350107/129/234/240-242/258/259/373

350376, 390008/009/013/016/039/041/044/118

390129-131/138

Crewe Greysty Bridge 14.28:

37605/606/609, 57301/306, 68027/31/32

Crewe Basford Hall 14.35:

66702, 86608/609/612/627/632/639/901

Chorlton 15.00-18.25:

37884, 66182/418/434/520/532/538/733/773

70004/015/020, 92028, 221102-04/08/11/17/18

221141-43, 325002/06/15, 390011/016/042/043

390045/046/103/104/107/112/114/117/122/124

390129/130/132/137/151/152/156, DR77002

3rd October: Acton Bridge 09.55-12.25:

66088/095/134/221/514/517/526/549, 90019/24/44

90046, 350117/130/232/240/242/248/371, 390119

390124/154

Crewe Station 13.20-14.35:

66133, 67007, 90029/43/45, 150278, 153362/74

175107/108/116, 221104/05, 350110/117/127/130

350240/242/371, 387162/163, 390020/039/042

390045/049/118/127, DR73910

Crewe Gresty Bridge 14.45:
37606, 57306/308, 68001/04/27-29, ADB965580

Crewe Casey Lane 15.15-18.30:
66087/506/517/528/563/566/733/778/952, 70007
70019, 92028, 220003, 221101/02/06/08/16/17/42
221143, 325002/07/15, 350111/130/232/248/371
390020/044/048/107/112/115/119/121/126/130
390134/136/137/151/154/157

10th October: Leyland 08.45-09.13:
88002, 142063, 150144, 156482, 319364

Preston 09.20-10.04 & 17.55-18.23:
37401, 60096, 142036/93, 150138/148/268
156427/451/466/486/491, 158851, 185150
319362/363/374, 350403/410, 390039/050/131
DR73921, cs 5995/6117/6173/9709

Lancaster 10.25: DR73914

Carnforth WCR 10.35:
37516/668/669, 47580/787/804/851, 57006/315
57316/601

Barrow 11.33-11.40:
37422, 156448, cs 5919/6064/6122/9710

Sellafield 12.48: 68016/32/34

Workington 13.32:
37604, 142009, 153316, cs 17159

Carlisle 14.26-16.48:
37025/421, 57304, 142023, 156421/439/469
158861, 350404/409/410, 390010/049/117

Carlisle Kingmoor 15.00:
66302/304/421/428/434, 68021/26, 88001/03/04
88007/10

17th October: Acton Bridge 10.00-12.05:
66040/054/107/520/547/561/708, 90042/48
350120/122/244/263/370/374, 390013/020/107
390117/154

Crewe Station 13.05-14.30:
08631, 37605/611, 56096, 57309, 150231, 153313
153367, 175105/107/108, 221102/11-13, 323223
323227, 325011, 350120/237/263/265/370/374
350376, 390006/040/042/043/047/115/117/118
390128/136/141

Crewe Gresty Bridge 14.45:
37259, 57301/308, 68019-21, 88002

Crewe Basford Hall 14.58:
47830, 86901

Crewe Casey Lane 15.15-18.20:
66131/230/426/520/526/528/534/595/733, 86628
70011/015, 92028, 220023, 221101/04/10/12/14
221115/17/18/42, 325008/11/12, 350122/237/244
350259/363/370, 390013/040/042/045/049/050
390107/115/119/121/123/126/129/132/135-137
390151/156

Leslie Sullivan:
19th September: Blackfriars 12.15-15.00:
700003/005-008/012-014/017/018/020-024
700028-031/033/035-041/043-046/101-104/111
700113/116/118/120/125

Paul Rosser:
19th September: Stockport 05.46-06.03:
142032/55, 150135/277, 390137
Polesworth 07.02: 66532, 88002

Wembley 08.00: 31452, 66088

Willesden Jct 08.02: 378212/26

Stratford 09.23-09.37/ 13.32-14.11:
90012, 315825/32/37/47, 321335/348/353, 345007
345008, 360113, 378202/09/12/13/21/26/27/31/33

Shenfield 10.09-10.29:
315822/33/35/50/61, 321303/324/345/347/351/360
345011, 379014/30

Romford 10.43:
90002/08, 360103/107/108/111, DR79267/277
DR97506/606/806

Ilford 10.54-11.26:
08700, 66122, 66517, 90004/11, 315828/30/42/53
317347/666, 321315/324/332/334/337/341/342
345006/09, 360101/104/109/110/114/117

Goodmayes 11.57-12.58:
90007, 315828/30/42/53, 321356/357

3rd October: Stockport 06.00-06.20: 185125

Sheffield 07.05-07.11:
66164, 142023, 144002/14, 158910, 185112/25
220007, 222012

Doncaster 07.37-07.50:
66161/432/747/749/772/778, 91108, 144010/12
185125

Newark North Gate 08.12: 91108, DR75301

Grantham 08.22: 91108, DR75402

Peterborough 08.40: 66745/775, 91108

Stevenage 09.07: 365535

Bounds Green Depot 09.23:
387102/109/116/119/120/122, 700019

York 12.59-14.03:
20302/303, 60095, 66434, 70814

17th October: Gresty Bridge, Crewe 07.12:
68004/17

Shrewsbury 07.45-08.19:
67015, 97303/304, 153353, 170513, 175102/113

Hereford 09.05: 66024/152, 67015

Newport 09.47-10.12:
43016/037, 60001, 150237, 158959, 170523
800008/009, DR73121/924

Cardiff 10.26-10.57:
43002/146/196/198, 142002/06/10/73, 143601/04
143606, 150258/278, 170113, 175007, 800008/09

Swindon 12.12:
66590, 800008/009, DR73114/96901/05/06/10/12

Reading 12.44-14.17:
43012/020/030/040/063/136/143/153-155/164/170
43171/175/187/195, 165102, 166202/04/14
220003/15, 221127, 387152/156/162, 800005/008
800009

Oxford 14.42: 70817

Dennis Dey:
11th August: Three Bridges:
700007/008/012/013/027/037/042/045/104/110
700111/120

Crawley Yard: 66106

Purley: 66011

Clapham High Street: 66076

Peckham Rye: 700018/032

East Croydon: 700102

Gatwick: 700109

Hassocks: 700106
16th August: **Hassocks:** 700112
Brighton: 700035
Three Bridges:
700002/011/012/029/030/032/035/102/107/110
700113/117/120/123
18th August: **Burgess Hill:** 700102
Three Bridges:
700008/009/012/014/016/018/024/026/037/043
700102/110-112/114/115/117/120/123
Crawley Road: 66147
Gatwick: 700109/114
Purley: 66187
East Croydon: 700113
Purley: 59005
Wivelsfield: 700106
19th August: **Hassocks:** 700025
Brighton: 700007/113/114
Preston Park: 700004
25th August: **Burgess Hill:** 700107
Three Bridges:
700001/011/014/025/035/038/042-044/107/110
700111/113/114/116/117/120
Crawley Yard: 59004, 66752
Purley: 66067/187
East Croydon: 700102
Clapham Jnct: 66701/717/730
Loughborough Jnct: 700111
Peckham Rye: 700032
Denmark Hill: 700036
Gatwick: 700108/113
2nd September: 700025/115
Wivelsfield: 700009
Three Bridges:
377705/706, 700011/023/033/040/102/106/108
700113/115-118
8th September: **Hassocks:** 700112
Three Bridges:
700012/018/025/026/031/038/039/043/046/103
700111-113/117/118/125/132
Crawley: 66025/077
Gatwick: 700109/113
East Croydon: 700101/104
Wivelsfield: 700102
15th September: **Burgess Hill:** 700107
Three Bridges:
700001/010/033/042/045/105/107-109/114/116
700118/123/125/139
Crawley: 66077
Purley: 66076, 700101/108
East Croydon: 700045/101
Liverpool Street: 345009
Iford: 08573/700, 345008/11
Gatwick: 700046/112
Wivelsfield: 700117
22nd September: **Three Bridges:**
700009/011/046/101/102/106/107/112/113/118
700120-123/125/132/139
Crawley Yard: 66079
East Croydon: 700110/114
Paddington: 387134-136/151
Old Oak Common: 08483, 57310

Acton Yard: 59004, 66082/110
Ealing Broadway: 387134/151
West Ealing Yard:
387130/132/133/137/139/140/146/149/153
Southall:
46100, 08780, 47237/746, 57314, 66117, 66704
Gatwick: 700001/009/108/112/116
29th September: **Burgess Hill:** 700101/117
Haywards Heath: 700105
Three Bridges:
700023/031/041/043/045/103/107-109/114/116
700117121-123/140
Purley: 66101, 700109
East Croydon: 700023/106/113/114
Stratford: 66563/589
Iford: 08700, 345007
Liverpool Street: 345005
London Bridge: 700106
Crawley Yard: 66162
Wivelsfield: 700104
6th October: **Three Bridges:**
67012/14, 387164/165, 700006/019/022/031/102
700105-107/115/116/118/121-123/136/138
Crawley Yard: 66020
East Croydon: 700104/119
Marylebone: 68010/15
Gatwick: 59201, 700114
Wivelsfield: 700108
Burgess Hill: 700102
13th October: **Burgess Hill:** 700103
Haywards Heath: 700105
Three Bridges:
700007/008/024/033/039/044/103/106/109/112
700115/117/121/122/136/140
Gatwick: 700026/108/114
Purley: 66147
East Croydon: 700102/111/123
Wivelsfield: 700023
14th October: **Three Bridges Depot OPEN DAY:**
700009/024/027/039/040/044/109/119/120/123
700128/137/140/141
Three Bridges Station:
700017/020/043/103/112/113/116/117/122
Hassocks: 700106/122
Haywards Heath: 700103
20th October: **Three Bridges:**
387166/167, 700003/006/018/022/101/104-106
700109/111/114/118/120/122/128/141
Crawley Yard: 66005
Purley: 700109
Clapham Jnct: 707011/12
Paddington: 387142/151
Acton:
59005/206, 66005/056/132/171/748/764, 387142
387146/149/151, 800008/009
West Ealing: 387135/137/144/148/150
Southall: **34052, 46100**
Southall Station:
66089/101/528/622/953, 387142/146/149/151
800005/006
Clapham Jnct: 66731
East Croydon: 700120

Gatwick: 700045/112
Wivelsfield: 700119
Burgess Hill: 700104

Geoff Arnold:

23rd September: Chesterfield 09.52-12.20:
60009, 43207/378, 57314, 158780/788/794/797
158806/813/816/842/852/862/903, 221128/29/41
222002/003/008/014/016/020/023



60009 'Union of South Africa' t&t 57314 on a Railway
Touring Co railtour from London Victoria – York,
Chesterfield

Michael Hayman:

24th September: London Victoria:
35025, 60007, 57314, 67030
Acton: 66127, 70813/817

Southall:

46233, 70013, 37706, 47237/746, 66110/117/137
28th September: Liverpool Street: 90004/11
30th September: London Victoria: 68004/29

Geoff Hope:

28th July: Manchester Piccadilly 13.50-16.30:
66571/716, 67022, 70003/019, 142013/31/33/34
142037/42/43/46/47/49/54/55/62/86, 150110/111
150132/133/137/143/144/210/211/215/218/223
150226/270/275, 156406/426/428/441/459/463
156464/470/487/488, 158770/783/788/813/858
158862, 185102/03/06/09-12/18/20-24/30/32/35/36
185139/40/42/43/45/49/51, 220012/19/20/25/30/34
221136, 319361/369/377/383, 323223/24/26-31/33
323235-39, 350402/406/408/410, 390005/013/042
390043/046/047/117/118/138, DVT 82308
cs 12177/178/184

2nd August: St Pancras-Hendon 12.00-16.00:
43044/045/047/048/054/076/083/089, 66607
222003-005/007/008/010/012/014/017/019-023
222102, 319007/010/217/220/426/432/435/438
319449, 373201/202/211/212, 374005/06/11/12/23
374024, 377515/516/518/522, 700001-004
700006-010/013/017/019-021/023/024/026/027
700031/035-039/041-046/102/103/105/107/109
700111-116

Paddington 16.30-18.55:

43004/010/012/018/022-026/028/029/031/034-036

43041/042/069-071/078/079/086/087/176/181
165102-105/107/108/117/119/122/124/126/127
165131-134, 166207/11/19/20, 332002-05/07-09
332011-13, 360201/202/204, 387131-134/136/138
387139/142/145/146/148/149/151-153/155

31st August: Stafford 09.05-15.30:

66003/087/090/114/174/414/433/553/569/590/710
70003/007, 90016/24/28/45-47/49, 220007/13/21
220026-28/32/33, 221102-04/06/07/09-14/16-19
221123/26/28/30/33/35/36/39/42/43, 350105-108
350112/114/115/118/120/123/246/265/267/368
350369/371/377, 387157/158, 390002/006/009
390011/013/016/040/046/047/049/050/103/107
390114/115/117/118/121-123/125/127-132/134
390137/138/151/155-157

22nd September: St Pancras 12.15-12.40/18.55:

373001/002/215/216, 374003-06/25-30, 700017
700024/028/034/040/109/120

Cricklewood 12.56:

43045/047/054/058, 66605, 222017/019, 700001
700013/016/026/042/044/101/118

West Hampstead 13.10-15.15:

43046/048/050/059/075/081-083, 66198, 222003
222005/007/009-011/015/016/018/020/022/104
700004/006/007/010-012/014/018/020-023/027
700029/031-033/036/038/045/102/104-106/111
700116/117/125

Bethnal Green 16.05-18.35:

90007-11/14/15, 315801/03-07/09-12/14-18/20-22
315824/26-29/31-41/43/44/46/47/49-53/55/56
315858-61, 317338/343/347/505-507/510-515
317649-655/658-662/665/667/668/671/708-710
317714/719/723/729/886-891, 321301/309/313
321315-318/320/321/323-325/327/329-331
321334-343/345-350/352-357/359/360/362-366
321402/406-409/418-437/439/441-447, 345008/09
345011, 360101/102/104-108/110-115/118-121
379002-04/06-08/10/11/13-18/20-22/24-28/30
DVT's 82105/114/118/132/143/152

27th September: Stafford 09.00-16.30:

37603/884, 66065/089/115/142/156/168/302/434
66501/518/537/547/590/733, 68031, 70004, 86607
86622, 90013/16/19/24/43/44/46, 170204, 220003
220004/09/11-13/15/17/20/21/27-29/31/34
221102/03/05/06/08-13/15-18/20/21/24/29/34/40
221142/43, 350101/104/110/114/120/127/128/234
350242/243/248/252/258/369/371/372/375/377
390002/008/009/011/013/016/020/039/040
390044-046/050/104/107/112/117-119/124
390126-132/134-138/148/151-154/156/157

4th October: St Pancras 12.05:

373229/230, 374005/06/21-24/29/30

Bethnal Green 12.30-15.05:

90003/06/08-12, 315801-09/14-23/27-31/33/35/37
315841/44/47-50/55/57/59/61, 317337-339/347
317348/501/502/504/505/511/514/649/656/660
317662/663/666/672/708/714/732/887, 321311
321315/317/325/329/331/335/341/346/355/362
321407/410/424/425/427/437/442, 345006/07/09
360101-104/106-109/111/112/114/119/120
379001/03-05/07/08/12/14-16/18/22-24/26-29
DVT's 82107/114/121/127/139/143/152

Paddington 15.40-19.00:

43002-004/009/012/015/018/025/026/028/029/031
 43041/078/079/086/091/093/094/097/098/122
 43124-126/130/131/135-137/141-143/145/147-150
 43152/155/162/169-172/174/175/178/179/183/185
 43187/189/190/195/196, 165101/102/106/112
 165118-121/123/124/131/132, 166202/06/09/11/13
 166215/17, 180102, 332001/03/04/06-11/13
 360201/202/204, 387130-133/137-139/142/143
 387146/147/149-155, 800003/004
11th October: Stafford 09.00-16.00:
46233, 37218, 43013/014, 66023/065/139/168/426
 66427/517/520/522/548/557, 68008, 70020, 90028
 90037/43/45/46/48, 220001/05/08/13/15/16/21/23
 220025/26/28/31/34, 221101-04/06/08/09/11-13
 221115-19/23/28/32/33/39/43, 323215, 350111
 350113/116-118/129/234/236/238/239/242/247
 350248/265/372/377, 390002/005/008/010
 390043-047/050/103/104/114/115/117/119
 390121-124/127-129/131/132/137/148/152/154
 390157, cs 99041

Mike Rumens:**25th August: Nuneaton:**

66565/566, 70008, 90018/24, 170111, 350370

Leicester Yard & Station 14.10-16.56:

43047/050/052/060/064/066/081/083, 56032/077
 56098/301, 66056/096/118/601/715/735/753/771
 158810/857, 170397/637-639, 222001-004/006
 222007/009/012-014/019/020/023/101/103/104

27th August: Nuneaton 13.35-14.10:

60059, 170101/398/501, 220019

28th August: Nuneaton:

70813, 170113, 350107

29th August: Nuneaton:

66514, 90024/28/47, 153366, 170108/109, 221108
 350102, DR73930

31st August: Nuneaton:

66599, 70805/812, 170102/106, 350102/106
 387157/158, DR73930

2nd September: Nuneaton:

66090/530/560/598/714, 153366/71, 170518
 350128, DR77002

4th September: Nuneaton:

66167/510, 70815, 170107, 350117/370, DR77002

5th September: Nuneaton:

66167/536, 70812, 153366, 170103, 221108
 350112

6th September: Nuneaton:

70805, 153356, 170108/637, 350128

7th September: Nuneaton:

66135/413/952, 70816, 153371, 170397/636
 350104, 387159/161

9th September: Euston: 92014, 378255**Waterloo:**

450040/082/542/557, 458508/11/24/26

Clapham Jctn 09.05-10.30:

159006/008/013/017/021/104/107/108, 377106
 377107/114/120/146/161/164/203/205/207/409
 377415/419/421/424/428/445/449/457/458/474
 377514/601/605/607/609/610/615/616/618/ 624
 377701/706/707, 378142/144/147/152/202/208

378213/220/224-226/233, 387202/208/213/220
 387224/226, 444001/04/08/10/19/29/45, 450004
 450006/010/014/017/020/023/028/035/038/041
 450087/106/112/118/120/545/557/559/563/565
 450568/569, 455714/737/742, 456016/20
 458506-08/11/18/19-22/27/29/31/32/35

Basingstoke:

66503/514/542/568/598, 159005/006/008/021/106
 159108, 220002/08/33, 221121/40, 707008/09

Eastleigh:

66031/036/185/517/590/595/721/775, 158864/885
 220008/12, 221137/40

11th September: Nuneaton: 66079, 70815**12th September: Nuneaton:**

66079/847, 70815, 350123

13th September: Nuneaton:

66079/557, 70805, 90016/35/40/48, 153354

170104/107/398, 350104/130, DR73947

14th September: Nuneaton:

47813, 66112/551/779, 350114/266/375, 387159
 387161

16th September: Nuneaton:

66715, 170637, 350106

18th September: Nuneaton:

37405, 68001/34, 70817, 153365, 350374

19th September: Nuneaton:

66182, 70807, 90028/43, 170102

20th September: Nuneaton: 66182/557, 153364**21st September: Nuneaton:**

66120/182, 170104/106

25th September: Nuneaton:

66115/591, 70805, 90019/24, 170108/110/114/522
 350114/130

26th September: Nuneaton:

66115, 70808, 350106

27th September: Nuneaton:

70020, 170102, 350102/109/240

Washwood Heath: 66165**Lawley Street: 66534****B'ham New Street: 170102/518, 220003, 221123****King's Norton: DR98008****Cheltenham: 43002, 175114****Gloucester: 43098****Newport 09.12-10.13:**

43012/016/029/035/037/078/134/150, 60091
 67015, 150122/231/925/926, 158798, 170117/519
 175005/104/114

Alexandra Dock Jctn:

66075/230

Cardiff Central 10.26-15.45:

43010/016/020/025/031/032/040/079/086/136/143
 43148/160/162/163/165/172/175/185/190, 60063
 60091, 66020/051/114/137/140/414/509/531
 67023/27, 70803/807, 150002, 153353, 158826
 158841/859/950/955/957, 170101-104, 175002
 175007-011/101/104/108/109/115

28th September: Nuneaton:

66115, 70808, 153354, 170104

Alan Jones:**30th September: Elgin 19.30:**

37219/421 cs 5986/6264/977868/977983

1st October: Elgin 09.15: 66423
7th October: Elgin 10.30: 60076/085
10th October: Kingussie 10.35: 66524/545
13th October: Elgin 16.00:
60076/085, 66565, DR73904
20th October: Elgin: 66746, 170455
24th October: Inverkeithing 06.45:
158707/719, 170393/403/417
Haymarket:
156478/495, 158702/703/705/711/716/724/727
158730/739/740, 170430/456/460/472, 334009/34
Edinburgh Tramway: 252/55/60/64/68/75/77
Edinburgh Waverley:
68006, 156478, 158716/729/740/867, 170404/414
170418/426, 334028/39, 380009/014, cs 5955
5976/5987/6027/6177/9527
Glasgow Queen Street:
156449/496/507, 158720, 170396/408/409/434
Glasgow Underground:
101/103-106/109-113/117/120/121/123-126/130
133/201/203-205/208
Glasgow Central 11.00-11.15/11.45-12.50:
156439/442/450/453/476/495/500/505/506/511
156513, 158871, 220006, 314201-05/08/13/16
318253, 320308/309/311/312/412/415, 350404
380001/004/012/017/018/021/102/105/107
380111-113/115, 390006/013/129
Shields Road: 314215, 380002/007/011/015/106
Paisley Gilmour Street: 380004/020/108
Partick 13.00-13.30:
318251/52/60/62-64/70, 320302/305/309/311/315
320321/322/411, 334003/05/10/11/14/15/19/25/30
334031
North Queensferry: 158719, 170412/419
24th October: Carlisle:
37025/421, 57304, 156431/480, 158844, DR80301
cs 9523/72631/977997
Stockfield: 142070
Newcastle:
60087, 66305/423/537/543/556, 67008, 91113
142020/71/93, 156471/479, 185129/30, 220011/33
Pelaw 09.35-10.50:
14024, Metro 4002/03/08/09/11/17/19/20/24/25
4027-33/36/38/40/42/44/47-50/54/58-61/63-66/69
4073/74/76/77/79-82/85/88/90
Carlisle Kingmoor TMD 13.30:
66422/428, 68031, 88003/06/07/09/10
Beattock Sidings: 66737
28th October: Elgin 19.25-23.15:
37025/421, 66543/559/607

Steve Lord:

16th October: Edinburgh Waverley 17.05-17.30:
68007, 92014, 158730/733, 170431/432/457
334006, 380110/112
17th October: Birmingham New St 17.30-18.00:
158818/819/824/828, 170105/112/117/503/509
350124/241
19th October: Leeds 16.00-16.15:
66772, 91103, 150277, 155342, 158756/815/843
185140/41
21st October: Midland Road Leeds 14.10:

66531/548/562/593/607/613/620, 70006/013, 90041
23rd October: Leeds 08.45-09.05/13.10-13.25:
43061/075, 91121/31, 142020/40, 144001/13/23
150147/226/228, 153324/52, 155341, 158756-759
158787/844/853/859, 185101/51, 220009/27
221132, 333009/10/12/15
York 09.35-10.45:
43251/314/467/468/480/484, 66250, 68003, 91108
91110/19/22/24, 142026, 144005, 150204/222
158758/851/901, 185106/22/29/34/43/50, 220004
220015/25/26/30
Doncaster 11.20-12.20:
08724, 43206/238/296/308, 66414/543/595/610
66617/715, 67010, 90036, 91107/12/13/16/30
142045/66, 144006/10, 158903/904, 180101/11/13
185145/48, 220007/17/34, 318266, 322481/84

Sean Davies:

6th October: Birmingham New Street:
220007/11, 390112
Soho Depot: 08805, 37800
Wolverhampton Steel Terminal: 60100
Wolverhampton Station: 221113, 323220, 390008
Crewe: 08868, 153313, 323227, DR73108
Warrington Bank Quay: 66067
Wigan North Western: 319383
Preston: 57309, 142009, 319363
Lancaster: 156480, 221112/15, DR73914
Carnforth: 08485
Carlisle: 47804, 57315, 153358
Carlisle Kingmoor:
66031/050/133/198/199/221/421/424/430, 88003
88004/07
Glasgow Central:
156450/506-508, 314208/15/16, 318257/58/70
380003/103, 390104
8th October: Stafford 08.40-16.15:
66087/095/111/138/152/176/186/418/532/534/563
66564/571/733/951, 90043-46, 92028, 220001/05
220006/08/10/12-14/17/19/21/22/24/33, 221103-06
221108/10-16/19/24/35/37/42, 350101/103/121
350126/129/239/244/247/255/369/370/372-374
390001/002/005/009-010/013/020/040/044/046
390047/049/050/107/114/115/117-119/121/123
390125-130/135-138/141/151/153-155/157

Paul Tisserant:

12th October: Digby & Sowton 12.46-13.13:
143617, 153368/82
Exeter Central 13.19: 143619
Exeter St David's & Depot 13.23-16.16:
43005/012/042/069/094/128/136/154/155/159/172
43180/186/188/207/285/303/357, 70808, 143603
143611/17-20, 150120/246, 153318/29/61/68/72
153377/82, 159005/007/012/019/105, 220017/19
220030, 221131/40
13th October: Digby & Sowton 08.00-08.13:
143617, 150244
Exeter Central 08.25: 159012
Exeter St David's 08.30-08.53/17.40-17.53:
43097/140/153/165, 143612/17/18, 150130/238
150244, 159003/008/105

Exeter New Yard & Riverside Yard 08.56:

59204, 159005

Tiverton Parkway 09.07: 221120

Taunton Fairwater Yard 09.20: 66542

Westbury 10.00-16.25:

43016/020/028/037/069/135/136/139/146/159/172

43197, 59004/005/203-206, 66007/051/121/126

66156/540/724, 70803/808/816, 150129/219/232

150234/926, 153318/73/80, 158766/798/951-960

159012/013/101

20th October: Nuneaton 12.48-16.30:

66015/040/058/084/136/176/185/230/505/516/528

66529/568/722/725/759/768, 70019, 90020/24/39

153334, 170107/109/110/113/397/398/522/637

221114, 350104/113/118/231/369/374, 390001

390006/040/044/049/112/117/119/121/123/127

390130/138/141

Mike Brook:

25th September: Colton Jct 12.00-17.10:

43257/272/277/290/299/305/306/309/310/314/315

43319/465/468/480/484, 66050/136/421/541/710

66711/749/771, 91101/03-05/09/12/17/20/21/24/28

91130, 180114, 185110/13/14/46, 220001/08/10

220018/23, 221127, 800004, DVT's 82200-02/06

82209/11/13/14/22/30

26th September: Banbury 06.40-18.12:

66031/095/115/121/182/514/549/551/572/769/952

68008-10/14/15, 70008/017/808, 165005/006/017

165021/022/024/027/028/031/033/108/122

166213/217, 168002/004/005/106/107/109/110

168112/214/217-219/322-329, 172102-104

220001-05/07-10/12/18/21-24/28-31/33/34

221121/23/24/26/33/37, DVT's 82301/02/04/09

DR73905



66136 Colton Jct (16.19) 25th September 2017 (Mike Brook)

27th September: Basingstoke 06.45-14.00:

59003/103, 66023/031/069/156/171/182/505/506

66508/518/542/551/589/769/775/848, 70003/010

158883, 159001-004/006-009/011/013-015/017

159021/022/101/102/105-108, 220003/09/15/17/18

220024/26/28/29/31/34, 221129/34, 444001-07/10

444012-16/18-23/26/28-30/33/35/37/39/40/42-45

450001/003/006/008/009/014/016/017/019/020

450027/029/031/032/034/037/042/071/072/076

450077/079/084/085/088/089/091/093/098/102

450103/105-107/111-113/121-123/127/544-547

450549/553/554/556/557/559-561/563/564/566

450567/569/570

28th September: Eastleigh 06.50-15.05:

47813, 59002, 66003/023/031/083/087/154/156

66182/187/420/501/503/514/517/519/542/556/565

66724/740/769/775/849/850, 70003/010/019

73119/961/963, 158885/886/890, 220004/09-11/14

220025-27, 221141, 377440, 442422, 444001/02

444006-13/15/16/18/20/22/23/25/29/30/33/34/37

440038/40/41/44/45, 450008/011/034/041/080/082

450084/092/096/100/107/108/118/552/558

DR98913/963



66003 with autoballasters, Eastleigh (14.44) 28th September 2017 (Mike Brook)

47813 + 442422 Eastleigh (15.04) 28th September 2017
(Mike Brook)



70003 Eastleigh (17.23) 27th September

29th September: Cardiff Central 05.50-13.55:

37175, 43005/016/017/020/023/028/030/034/035
 43037/071/086/087/094/128/133-135/139/143/146
 43150-152/155/162/168/170/176/180/186/194
 60001, 66004/051/078/144/154/167/188/553/568
 67015, 70806/811, 142006/10/69/72/74/76/80-83
 142085, 143604/05/07/09/10/14/16/22-25, 150122
 150123/213/227/229/235-237/242/245/251-258
 150263/278-280/283-285/926, 153303/20/27/63/67
 158823/826/950/951/954-956/958, 170102/106
 170113/115/117/398/518/519, 175001-004/007
 175101-104/107-109/111/112, 220027, DVT82306
 cs 9703



60001 on 6B13, 05.00 Robeston Sidings - Westerleigh Murco tanks, Cardiff Central (09.17) 29th September 2017 (Mike Brook)



above 86259 (E3137) arriving on 1Z86, 07:10 West Coast Railway Company's London Euston - Carlisle Tour, Rugby, (08.23) 30th September 2017 (Mike Brook)



66154 on 6H24 11.35
Llanwern Exchange Sidings
- Margam TC with four different
types of empty covered steel carriers,
Cardiff Central (12.12) 30th September 2017 (Mike Brook)



the colourful 158798, Cardiff Central
(13.56) 29th September 2017 (Mike Brook)

Rugby 17.40-18.40: 57309, 66558/733, 390152

30th September: Rugby 07.10-10.52: 66589, 68004/29, 86259, 90043/45, 221108, 319383, 350105/107/
350108/114-116/118/122/126/127/235/238/257/263/369/370/376, 390040/045/049/103/114/1135/136/156/157



319383: Rugby (10.49)
30th September 2017 (Mike Brook)

Brian Bentley: Between 30th September – 1st October 2017 there were no services through to East Grinstead and Uckfield from Purley due to work being done on Limsfield Tunnel (East Grinstead line).

30th Sep: **Oxted:** Up Line (waiting to go to work site) 66769

1st Oct: **Hurst Green:** (trains stopped waiting to go through to Purley) 66031/115

Tonbridge West Yard - Tonbridge West Yard RHTT workings during October 2017:

3W90	3/5/9/10/15/20	66704 t&t 66721	13	66730 t&t 66732
		19 73109 t&t 73136	22	66730 t&t 667xx
		23 73201 t&t 73212	25	66721 t&t 66730
		26 73128 t&t 73136		
3W91		4 73212 t&t 73213	13	73128 t&t 73213
	3Z90	11 73119 t&t 73201		

Horsham up TC - Horsham up TC RHTT workings with MPVs:

323Y	5	DR 98929 + DR 98979	365E	13	DR 98913 + DR 98963
-------------	---	---------------------	-------------	----	---------------------

PRESERVATION GALAS

North York Moors Rly (NYM) Autumn Steam Gala by Colin James:

The NYM held its annual Steam Gala & Beer Festival over the 3 days of Friday 29th September to Sunday 1st October. The event saw a variety of attractions along the line. At Pickering there were model railway layouts, trade stands, book signings and a traction engine display. The beer festival was held at Levisham & Goathland with model traction engines at Goathland.



above 45212 & 5199 side by side in platforms 3 & 2 at 10.14,
45212 is the tail loco on the 10.15 Grosmont – Whitby service headed by D6728,
5199 will head up the 10.24 Grosmont – Pickering service

Mainline shuttles ran between Whitby & Battersby on Friday & Saturday and just between Whitby & Grosmont on the Sunday. Passenger services ran over the preserved section between Grosmont & Pickering, with either Grosmont to Goathland shuttles on Friday or Pickering to Levisham shuttles on

Saturday interspaced in the timetable. A demonstration freight train ran on Saturday between Grosmont & Goathland & Sunday between Pickering & Levisham.

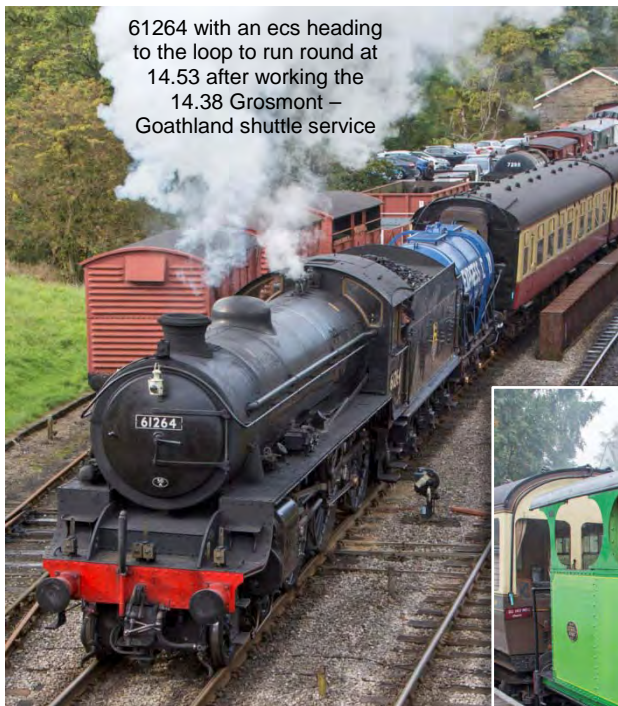
For the event the railway had 4 visiting locomotives: 0-6-0PT 1501 (courtesy of the Pannier Tank Association), 0-6-0PT 7714 (courtesy of SVR Pannier Tank Fund), 2-6-2T 5199 (LLR) & Black 5 4-6-0 45212 (courtesy of Ian Riley)

left 7714 + 1501 departing
Goathland at 14.15 on the 13.44
Grosmont - Pickering service

From the home fleet Schools 4-4-0 926 'Repton', recently returned from overhaul, was joined by B1



4-6-0 61264, Black 5 4-6-0 44806, BR 4MT 2-6-0 76079 & BR 4MT 2-6-4T 80136. D7628 also saw use top and tailing with 45212 on Friday's Whitby – Battersby mainline shuttles. 44806 was declared a failure on the Friday morning, with 61264 substituting for its turns, the B1 had not been scheduled to work on the Friday.



61264 with an ecs heading to the loop to run round at 14.53 after working the 14.38 Grosmont – Goathland shuttle service

Work commitments meant I could only attend the gala on the Friday of the event. I travelled up on Thursday afternoon to view Grosmont MPD. Engines viewed around the site were the aforementioned 1501, 7714, 5199 & 926 in steam ready for the gala, with D7628 ticking over. Other engines seen were BR 4MT 4-6-0 75029 *'The Green Knight'*, WD 2-10-0 3672 *'Dame Vera Lynn'*, S15 4-6-0 825, Q6 0-8-0 63395, D2207, 08556, 12139, D5032, D5061 & 55022.



Services on that sunny afternoon's standard green timetable were being run by 45212, 44806, 61264, 76079 & 80136.



926 departing Goathland at 12.54 on the 12.29 Grosmont - Pickering service

An additional locomotive on display at Grosmont station on the Friday was the diminutive 0-4-0T 1625 *'Lucie'*; a vertical boyled loco built by Cockerill of Seraing, Belgium in 1890 (see above). A recent arrival to the line owned by a volunteer, it is hoped to have it working in a couple of years.

Friday was a day of mixed weather with a grey, windy and at times very wet morning, gradually changing into a warm,

sunny afternoon and evening. The timetable worked well and trains looked to be well loaded for a weekday.

80136 heads south at Moorgates at 16.25 working the 15.56
Grosmont – Pickering service



All photos by Colin James

Llangollen Rly (LLR) 'Along South Western Lines' Steam Gala by Martin Evans:

On the 13th October 2017 LLR commenced their three day 'Along South Western Lines' Gala so I took the opportunity to visit on the first day and found the following engines in traffic: Prairie 2-6-2T 5199, BR Std 2-6-4T 80072, 0-6-0PT 6430 on auto train duties with auto coach 130. Visiting locos were BoB 4-6-2 34053 'Sir Keith Park' (SVR) and 8F 2-8-0 2807 (GWR).

The weather was rather muggy with an isolated shower mid morning when the afternoon improved to sunny periods. I travelled on the 09.30 service to Corwen which was in the hands of 34053 which though away on time, struggled to gain a foothold on the curve and gradient outside the Llangollen station, eventually arriving at Corwen 15 minutes late banked by 2807 from Carrog. 2807 led back to Carrog when 34053 returned to Llangollen.



2-6-2T 5199 departs Berwyn on the 11.59 service to
Corwen, 13th October 2017 (Martin Evans)



4-6-2 34053 & 2-8-0 2807 Carrog
13th October (Martin Evans)

Great Central Rly (GCR) Autumn Steam Gala by Colin James:

The GCR held its Autumn Steam Gala over 4 days of Thursday 5th to Sunday 8th October. The railway had 2 celebrations, each of 50 years, the end of Southern Steam and the return to service of a locomotive for the first time in preservation.



4-6-2 34053 passing Beeches Rd,
Loughborough at 10.48 on the
10.45 Loughborough Central -
Leicester North service

To help celebrate the end of Southern steam, there were 2 visiting locomotives. BoB 4-6-2s 34053 '*Sir Keith Park*' (courtesy of Southern Locomotives Limited & SVR) and 34081 '*'92 Squadron*' (courtesy of Battle of Britain Locomotive Society & NVR). The other celebration was the return to service of BR 5MT 4-6-0 73156 after a restoration from scrapyard condition. To fit in with the Southern theme it ran as sister locomotive 73084 '*Tintagel*', a former Nine Elms locomotive.



above 2-6-0 46521 departing Quorn & Woodhouse at 13.55 on the
13.45 Loughborough Central - Leicester North service

These locomotives were joined by the following from the home fleet: Hall 4-6-0 6990 '*Witherslack Hall*', 9F 2-10-0 92214 '*Leicester City*', 8F 2-8-0 48624, BR 2MT 2-6-0 78018, 3F Jinty 0-6-0 47406, Ivatt 2MT 2-6-0 46521. D8098 and the Cl.101 DMU were also destined to see action over the gala. King Arthur 4-6-0 No. 777 '*Sir Lamiel*' did not quite make it, now withdrawn at the end of its 10 year boiler certificate.



2-8-0 48624 passing Beeches Rd, Loughborough at 10.03 on the 10.00 Loughborough Central - Leicester North service

I could only attend the gala on the Thursday of the event, which is traditionally a quieter day of the event with just 3 locomotives in operation on 2 rakes of BR Mk1 coaching stock. However there were extra passengers and lineside photographers waiting for the first ever run of 73156 in preservation and the scheduled running of both Battle of Britain loco. As it happened events did not go to plan, 34081 needed repairs to a cracked firebox which meant it would only be ready to run from the Friday of the event. 8F 48624 covered all its booked turns on the Thursday. Then 73156, superbly turned out in lined BR Black, but with only 200 miles under its belt running in, suffered from a steam brake fault on its first passenger turn (see overleaf top) and did not see any further action that day. The rest of its duties were covered by 46521.



4-6-2 34081 being prepared for service outside Loughborough MPD at 11.50

With the working locomotives being prepared for the gala weekend in the yard area outside the MPD, the MPD shed was open to booked tours for a donation. Inside the shed were: 0-6-0ST Austerity (to be numbered as J94 68067) as it nears the completion of its overhaul, WC 4-6-2 34039 'Boscastle', Black 5 4-6-0s 45305 & 45491, 8F 2-8-0 48305, BR 2MT 2-6-0 78019 (all under overhaul or

restoration). 04 2-8-0 63601 & King Arthur 4-6-0 No. 777 'Sir Lamiel' stored awaiting overhaul. Also inside were D5401 & D123 under repair.



above 4-6-0 73156 masquerading as 73084 waiting at Beeches Rd, Loughborough at 11.08 to back into the station for its first passenger service

A tried and tested timetable was scheduled with full line length and shuttle passenger trains in service, along with 2 demonstration freight trains and the TPO in operation.

Overall, on a windy day of sunshine and light showers and allowing for the roster changes, a good opening to the gala weekend was had.

All photos by Colin James

Spa Valley Rly (SPA) & Mid Hants Rly (MHR) Diesel Galas by Colin James:

SPA & MHR both held 3 day diesel galas over the same weekend, from Friday 20th to Sunday 22nd October. Having a free weekend, I made the trip to Tunbridge Wells West for the SPA Gala on the Saturday and staying in the south, visited MHR on the Sunday.

Saturday 21st Oct: Starting with the Spa Valley Railway, their gala was also combined with a CAMRA beer & cider festival offering over 160 beers and 30 ciders for the punters...*you missed that one Pete, ed !! (our Treasurer likes a good real ale)*. With Real Ale bars at Tunbridge Wells West, Groombridge & Eridge, as well as on both trains the railway was packed by early afternoon, the beer drinkers far outweighing the enthusiasts!

With one passing loop, just outside Groombridge station, services were run with 2 trains in operation. One coaching set made up of 4 BR Mk1 carriages, the other set used the 3 car Cl.421 EMU CIG 1497 'Freshwater'. This was later increased to 5 cars with the addition of the 2 car Cl.207 DEMU 1317 (60909 + 60142) as a hauled set. Five diesel locomotives were in operation, four from the home fleet: D3489 'Colonel Tomline', 31289 'Phoenix', 33063 'R J Mitchell' & 33201, with visiting 5518 (31101)

(courtesy of Suburban Preservation & AVR). Drewry 0-4-0DM shunter 2591 'Southerham' had been due to work an early morning brake van ride with the Queen Mary Brake, but was unfortunately unavailable and the brake van trip did not run. Locomotives viewed at Tunbridge Wells West not in use were class 09026, 15224 & 73140. Spare CI.207 DEMU centre car 60616 was also at Tunbridge Wells.



Drewry 0-4-0 'Southerham' drawing DEMU 1317 out of the Tunbridge Wells West yard at 08.23

Locos swapped at each end of the line. At Eridge, Network Rail uses platform 1, one face of the old Up island platform, SPA uses both faces of the old Down island platform numbered 2 & 3. With no run round facilities the loco arriving at Eridge stays attached to the stock in platform 2, then after the train departs for Tunbridge Wells West, is released to be stabled in platform 3.



31289 in platform 2 at 10.20 on 2T06 10.30 Eridge - Tunbridge Wells West service



Also viewed at Eridge were the Southern CI.171s on London – Uckfield services with the bonus of two RHTT trains, the Horsham based MPV and the Tonbridge West Yard based top & tail 66s (see **RHTT GALLERY**).

On the day storm Brian arrived, the weather varied from bright warm sunshine to short sharp rain showers with the strong wind prevalent.

Sunday 22nd Oct: By comparison Sunday was a quieter day entirely at the Mid Hants Railway, both with the weather and passenger numbers, with no Beer Festival to help boost the numbers.

right DEMU 1125 in Alresford at 09.55 on the 10.15 Alresford – Ropley service

The Mid Hants has a smaller diesel fleet nowadays, with 08377, 33053, 50027 'Lion' and Hampshire CI.205 DEMU 1125 in service. Stored locomotives 08032 & D3358 were in the long siding at Ropley along with sold D5353 27007). Visiting locomotives were NRM owned. D6700 & D9002 'The Kings Own Yorkshire Light Infantry' & Mangapps Railway based 03197 & 33202 'Dennis G Robinson'. The last two were on stopovers after successful visits to the Isle of Wight Railway.



Four passenger trains were in operation, the DEMU working Alresford to Ropley shuttles, with 3 x 6 car sets of all BR Mk1 coaches, with the exception of one Bulleid brake, working the full length of the line hauled by the mainline locomotives.

03197 was employed at Alton with the Queen Mary Brake van 56302 operating brake van rides between services. 08377 worked an early morning Alresford to Ropley and return passenger turn, before being used for driver experience turns in the carriage siding at Alresford.



above 50027 approaching Ropley at 13.23 on the 13.15 Alresford – Alton service non-stop through Ropley

left D6700 departing Ropley at 12.41 on the 12.25 Alresford - Alton service

below 33053 + 33202 on the 13.45 Alresford – Alton service, Ropley (13.53)



right D9002 departing Ropley at 14.47 on the 14.25 Alresford - Alton service

middle 08377 approaching Ropley at 08.45 on the 08.20 from Alresford

bottom 03197 + Queen Mary brake van 56302 in the run round loop, Alton at 12.00

All photos by Colin James



Nene Valley Railway (NVR) CI.31 60th Anniversary Gala by Trevor Roots:

Over the weekend 13-15th October 2017 the NVE hosted the 60th Anniversary Gala of the Brush A1A-A1A Type B (later Type 2) then CI.31 with no less than eight CI.31s in attendance. In actual fact the anniversary relates to the first of the pilot scheme batch (D5500-19) originally designated CI.30 (later CI.31/0). The first loco to be delivered was D5500 on the 31st October 1957. This loco is the national collection at the NRM as 31018 so a shame it couldn't have somehow been on display. CI.30 disappeared when the original Mirlees engines were replaced by English Electric.



Colin & Chris awaiting the rush !!

right 31271 passing under the signal gantry at the east of Wansford station before crossing the old A1 to pass the signal box and cross the River Nene (14.06) 14th October 2017



The pilot scheme locos had headcode discs fitted and this style continued up to D5529 on the subsequent production run after which they were replaced by a roof indicator box. However due to production problems, a further 10 locos continued to receive headcode discs, D5535/39/43/47/48/51/52/56/59/62. Of these, 2 survive, 31461 (D5547) & 31130 (D5548) but the latter received a headcode box. A total of 263 CI.31s were built D5500-5699, 5800-62 with the last delivered in October 1962. Those without roof boxes were nicknamed 'skinheads' of which 5 survive as such out of the 38 that remain, 31018 D5500, 31105 (D5523), 31106 (D5524) 31418 (D5522) & 31461 (D5547/31129).

once the Gala started this was the only time I believe all 8 CI.31s could be photographed together, as seen from the footbridge, Wansford (17.32) 13th October 2017



left to right
31108, 31285, 5580 + 31466, 31465,
31452, 31459 + 31271

The post TOPS numbering was 31001-19, 31101-327 though several never received a 31/1 number going straight into a new 31/4 sub class, created for locos with electric train heating (ETH). When this was isolated a sub class 31/5 was formed. A further sub class 31/6 was for the handful that gained push pull equipment. The last but one active 31s on the mainline were those used by NR, 31105/233*/285*/465 (* fitted with extra lights) now no longer used, of which two made it to this Gala with one of each with / without the extra lights.

Joining resident 31271 'Stratford 1840-2001' were 31108 (the only skinhead) & 5580 (31162) (MRB), 31452 (the last on the mainline from DCR), 31285, 31459 & 31465 (HNRL) and 31466 (DFR). The 8 locos carried 6 different liveries with both skinhead and headcode box variants and 2 were fitted with miniature snowploughs.

left the other end of 31285 which doesn't carry extra light in the headshunt alongside the station as seen from the path to the works, Wansford, 15th October

below a comparison of front ends, together with 31271 opposite and 31285 above, note the ETH equipment on the CI.31/4s, 31466 is not shown but was the same as 31459 *above left to right* 31459, 31285, 31452, *below left to right* 5580, 31465, 31108

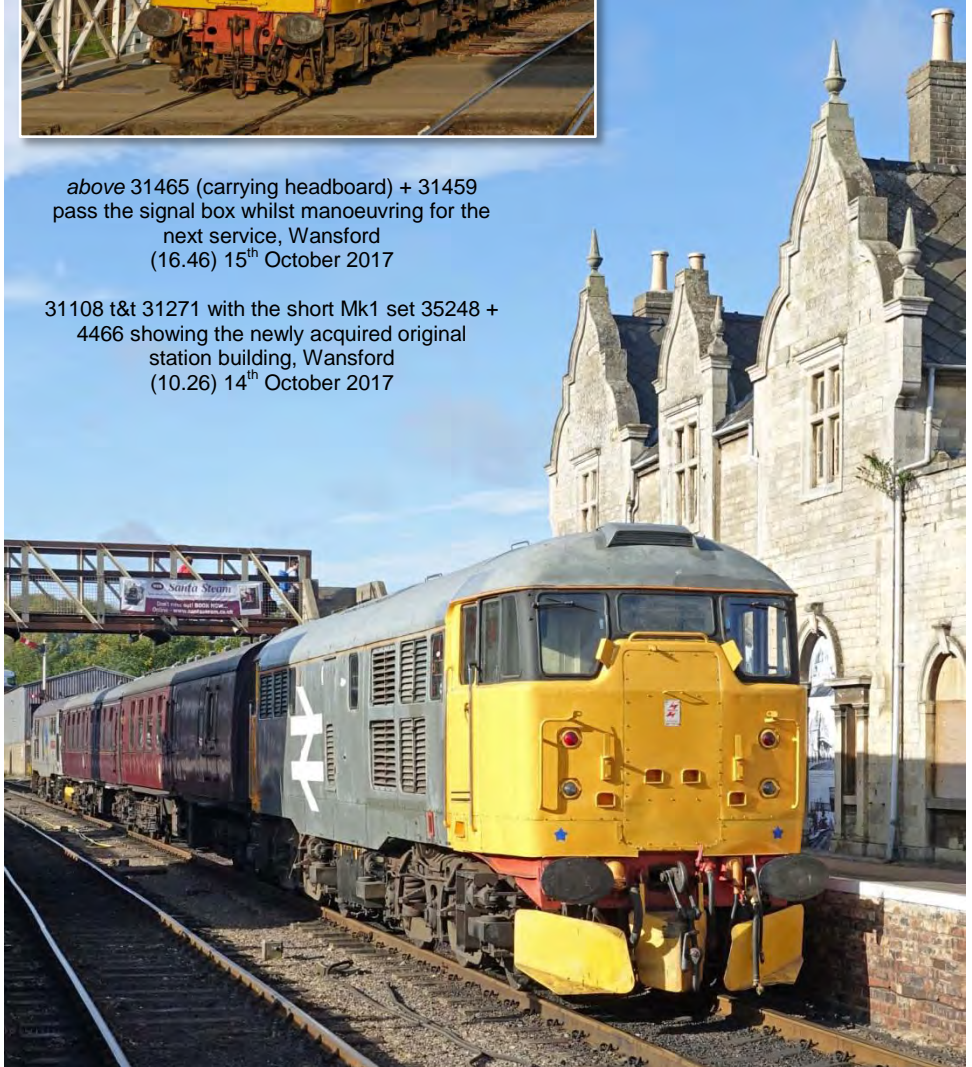




On the Friday a single service was operated using a rake of 6 Mk1 coaches, 25639 + 35239 + 4686 + 4919 + 25347 + 35248 between Wansford and Peterborough. On Saturday and Sunday three services were running extending to Yarwell, the western extent of the line. The same Mk1 set was in use though 35248 was removed to form a two coach set with 4466. A set of 5 international coaches was also used, 21033 + 21013 + 23009 + 42170 (Belgium) + 475 (Denmark).

above 31465 (carrying headboard) + 31459 pass the signal box whilst manoeuvring for the next service, Wansford (16.46) 15th October 2017

31108 t&t 31271 with the short Mk1 set 35248 + 4466 showing the newly acquired original station building, Wansford (10.26) 14th October 2017





above showing our nicely positioned sales stand on the right (white roof)
31459 + 31271 arrive at Wansford at 17.29 on the 13th October 2017

left 31466 + 31465 awaiting the arrival of the service from Peterborough before attaching to the rear for the run up to Yarwell (14.04) 13th October 2017



right looking west 31108 + 5580 t&t 31271 returning from Yarwell passing under the A1, Wansford (13.58) 14th October 2017

Over the weekend, locos were swapped over at Wansford with Peterborough – Yarwell services being top & tailed from Wansford to Yarwell which then returned at the head through to Peterborough with the then tail loco being removed on the way back at Wansford. Most combinations were tried with an interesting one being 31465 (D5637) + 31466 (D5533) which may never have run double headed before in any former life...anyone know different. Another working was 31285 + 31465 the two ex-Network Rail yellow locos paired on the last service of each day but even



with good weather the light was failing by the time they returned from Peterborough at 18.20 which was a pity as the sun had just dropped denying them a scene similar to the front cover. However the photo below shows them coupled up at 13.57 in Wansford Yard ready for their run on the Saturday.



The weather was largely sunny and nearly completely dry for the first 2 days with just a brief shower around lunchtime on the Friday. Sunday started foggy and remained dull until around lunchtime but brightened up.

31459 in its new livery of rail blue Wansford (12.48) 14th October 2017



from the footpath alongside the railway east of the River Nene, 31466 on the short Mk1 set is seen departing Wansford for Peterborough (12.44) 14th October 2017



above 31452 sits in the sun between the sheds and the turntable as seen from the footpath to the works, note DCR branding can still be seen mid body (10.06) 14th October 2017

below with [1359] 0-6-0ST 'Derek Crouch' and the tender from BR Std 4-6-0 73050 beyond, 5580 sits on the turntable which was used by all of the locos over the three days to manoeuvre between duties (12.34) 13th October 2017

note our sales stand handily positioned to see movements around the yard and we could look through the station doors to see trains approaching from the east allowing a quick dash outside to take photos



right the worksplate for 5580, the only one of the eight that still carried one



left 5580 (31162) + 31271 approaching Wansford (13.18) 15th October 2017 as seen from the end of the main platform note the changing headcode which is different in all photos of 5580

Unlike many headquarters of preserved lines, Wansford offers many different photographic angles within the station / yard area helped by manoeuvres from stabled locos in front of the shed onto the turntable or to the headshunt by the side of station building which necessitates a gate being opened across the footpath to the works. Further good views can be had looking east across the River Nene.



Furthermore a footpath runs alongside the railway and a short 5 min walk alongside the line heading east towards a siding containing stored stock gives a couple more views. With the line being east – west both morning and afternoon shots can be had which also add variety. The best shots however are from the south when the sun is blazing, so fortunately the footpath is on the south side and access looking across the yard can also be had from the south. So even though I never ventured from Wansford the photos are varied as can be seen. Colin did head off to Longueville Jct (connection to the mainline) early on the Sat morning though the weather as mentioned wasn't brilliant but he got a few better ones on the Sunday.

left 31452 heading to Wansford with the short Mk1 set (09.33)
 & *below* 31465 heading to Peterborough with the continental set (09.45)
 Longueville Jct 15th October 2017
 (Colin Pottle)



For completeness the age of the locos in order with [former numbers] (delivery date): 31108 [D5526] (04/59), 31466 [D5533/31115] (06/59), 5580 [31162] 01/60), 31465 [D5637/31213] (07/60), 31459 [D5684/31256] (01/61), 31271 [D5801] (06/61), 31452 [D5809/31279] (07/61) & 31285 [D5817] (10/61)

Other locos present at Wansford were: Cl.14 9529 (shed), [1359] 0-6-0ST 'Derek Crouch' (turntable), [10202] 'Barabel' RR Sentinel 0-4-0DH & DL83 [10271] RR Sentinel 0-4-0DH (yard), 101 [2082] 4-6-0 (Sweden), [1589] 0-6-0ST & [2654] YEC 0-4-0DH (alongside footpath to works), Cl.14 45 (D9520), [D1123] EE 0-4-0DH & BR Std 4-6-0 73050 (works)

A good Gala, especially if you liked Cl.31s, with all services running on time, with no outwardly apparent issues with any of the locos.

FRANCHISE / NETWORK NEWS

Great Western Railway (GWR): CI.800 IPEs finally started operation with GWR on the 16th October 2017 (with a few hiccups) displacing HSTs from frontline GWML service for the first time in 40 years. The following photos show the service running smoothly on the 17th October 2017.



above changing of the guard, 800006 (not in service returning from London in disgrace) & 43174, Swindon (10.00) (Colin Pidgeon)



above 800008 + 800009 on 1B40 Paddington – Swansea, Swindon (14.50) *below* 800009 + 800008 on 1L51 Cardiff – Paddington, Swindon (12.00), 17th October 2017 (Colin Pidgeon)



The first run from Bristol Temple Meads to London Paddington using 800005 + 800006 was beset with problems even before departing as it arrived from Stoke Gifford an hour late and though due to leave at 06.00 it finally left at 06.25. It arrived 41 mins late at 08.25. This set did not work again resulting in the 08.15 departure and 10.55 return from Cardiff being cancelled. The final intended run was operated by a HST on the 13.45 and 19.29 return from Swansea. The second set 800008 + 800009 did perform faultlessly on the 07.00 Paddington to Bristol then was the first passenger carrying IEP into Wales on the 11.45 service to Swansea.



above 800005 + 800006 on 1B28 Paddington - Swansea, Swindon (12.50) 17th October 2017
(Colin Pidgeon) note 800005 has lost its short lived promotional 'bird' livery (see Sep / Oct 2017 issue)
in favour of GWR corporate green

West Midland Trains (WMT): Having taken over the franchise from LMT, WMT is to rebrand its stock with two new names, West Midland Railway will appear on local services around its core West Midlands base whilst the longer distance services on the WCML will appear with London & North Western Railway. This reintroduces a familiar name from pre-grouping days. Both brands will have new liveries and be introduced from the 10th December 2017. A total of 107 new trains are to be built. DMUs 12 x 2 car & 14 x 4 car from CAF and EMUS (based on Aventura) 36 x 3 car & 45 x 3 car by Bombardier. All are due between 2019-22, WMT is also to take the 8 x Cl.172s released from the Gospel Oak – Barking line possibly for use on the Nuneaton – Coventry – Leamington Spa route and the 10 x Cl.350/4s from TPE.

Northern Belle: Belmond sold their stake in Northern Belle Ltd to a consortium led by WCR so expect their traction to take over from the current DRS Cl.57/3s. It is unclear what will happen with the stabling of stock as a 10 year agreement was signed to keep it at Kidderminster, SVR.

Misc News: With electrification abandoned and a new franchise needing to be structured possibly involving bi-mode traction, the existing EMT franchise has been extended until March 2019 under the current pre planned agreement.

TfL is to order an additional 9 Cl.710s, 6 x 5 car and 3 x 4 car.

LIGHT RAIL & METRO NEWS

Metrolink by Geoff Hope:

As expected on the 21st September, the Greater Manchester Combined Authority agreed fare increases of 5.93% on average each year as part of a phased 3 year increase. This was the result of an 8 week fares survey when 78% of commuters opted for the increase to be applied over the 3 year period. Metrolink receives no public subsidy so any increases will pay towards the upkeep of the network operating costs. Children aged 5-16 years old will pay 50% of the adult fare, Special Event

Tickets held since 2012 will increase by £1 to £4. A new discounted special event ticket for 5-18 years old will be £2, half the adult price.

The opening of the Second City Crossing in February has helped increase passengers by 11% to more than 40 million in the year to September 2017. The latest passenger satisfaction survey, carried out by Transport Focus between Sep - Dec 2016, shows 90% of customers are happy with the services offered by Metrolink.

Severe delays to the network at the start of the Conservative Party Conference was caused by crowds of protesters sitting and standing on the tram tracks in and around St.Peters Square stop. Services from south Manchester terminated at Deansgate / Castlefield and from the north at Exchange Square. Another incident of a smashed windscreen at Whitefield on the Bury line was caused by a bird flying into the windscreen causing delays to services.

Observations for Friday 13th October: (93 trams in service)

Cornbrook 10.00-12.15:

Altrincham - Bury: 3003+3041, 3006+3048, 3007+3047, 3008+3049, 3011+3013, 3012+3025, 3033+3036, 3037+3060, 3038+3045, 3040+3050, 3057+3058

Altrincham - Ethiad Campus: 3004/3005/3009/3018/3020/3021/3044/3059

East Didsbury - Shaw:

3052/3055/3066, 3067+3082, 3070+3105, 3074+3120, 3075/3093/3094, 3097+3109, 3102/3115

East Didsbury - Rochdale:

3027/3028/3029/3030/3032/3053/3054/3056/3064/3072/3087/3090/3113/3119

Eccles - Ashton: 3063/3071/3073/3079/3088/3089/3095/3096/3099/3101/3104/3117

Media City - Piccadilly: 3076/3092/3100/3107/3108

Airport - Deansgate Castlefield: 3061/3069/3077/3078/3085/3103/3106/3110/3111.

Old Trafford Depot: 12.30 - 12.50:

1007/1020/1023/2001, 3011/3013/3019/3024/3043/3051/3062/3065/3081/3083/3084/3091

Queens Road Depot 13.20 - 13.40: 3031/3035/3039/3051/3080/3098/3112/3114/3116

Victoria 13.50 - 14.50:

Bury - Piccadilly: 3001/3002/3010/3016/3023/3042/3046

Trams not seen: 3014/3015/3017/3022/3026/3034/3068/3086/3118

During the time spent on this observation 3011+3013 were replaced by 3033+3036 on the Altrincham-Bury service and 3051 was transferred from Old Trafford to Queens Road Depot.

TRAM PHOTO SPOT



above Edinburgh tram 255 carrying advertising for CR Smith en route to the Airport, Princes Street, 29th October 2017 (Martin Evans)

FREIGHT MATTERS

To allow members to keep their copy **UK Wagons** as up to date as possible, changes are provided via this spot every month. Please let Trevor Roots know if you have any amendments or wish pass on any other helpful wagon information, contact details on page 2.

Thanks to the following for information: Alex Ford, Bob Anderson, Steve Gillam

Out of Store: 608117/118, 630035/036

To Store: MXA Bogie Box (Stoke) 950141/0228/0921/1198, 965035/061/069/072/073/077

New: IIA Bogie Hopper 81.70.0659.001-9 to 041-5 for GBRf sand flow from Middleton Towers (en route at Fréthun, France)

JNA Bogie Box 81.70.5500.479-7-0 to 503-4 for GBRf have been delivered to Tonbridge West Yard, the last 4 being extra to the initial order. Note the previous wagons 454 to 478 reported in the last issue were wrongly identified as **MMA**

Converted/Re-numbered: FIA EMU Match Wagon Single Flat 83.70.4913.006-0 + 021-9 to **FIA Bogie Megafret Intermodal Twin Container Flat** 31.70.4938.075-9. NB these conversions will all be listed with the previous numbers in **UK Wagons 2018** as not shown before.

FIA Bogie Megafret Intermodal Twin Container Flat 33.70.4938 524-4/534-3,723-2/737-2 have been renumbered back to 31.70.4938 128-6/195-5/087-4/017-1 respectively

Preserved: YGB 980061/082 to Sonic Rail, Burnham on Crouch

Removed from TOPS / For Scrap / Scrapped: all TTA tanks in the range 56001 to 56279 (two more types banished to history), 100002/005/069, 110544/761, 112141, 200946, 391076/1452/4246/4672/5045/5115/5134, 621483/511, 967527/536/582586//956

FREIGHT NEWS

Colas has secured a new cement flow from Oxwellmains to West Thurrock, North Thameside, the longest cement working in the UK. The contract started on the 18th July 2017.

Tamper DR 73904 'Thomas Telford'
stabled alongside Ardmore Distillery,
Kennethmont, 19th October 2017

OTP PHOTO SPOT



STOCK CHANGES

It is hoped that all major changes recorded below will help you keep the **UK Combine**, **Pocket Book** and **Name Directory** up to date, (numerous pool code changes will not be recorded). In order to compile as accurate and up to date list as possible, can members please pass on their observations, particularly name changes and multiple unit reformations to the editor, **Trevor Roots**. Where possible, photos of new nameplates will be included as and when a suitable photo is sourced from members.

Misc. News:

The 10 Cl.66s put for sale by DBC (see Jul / Aug issue) have been bought by GBRf and will be re-numbered in their 667xx series 66780-789.

73966/67/70/71 have been fitted with Dellner couplers to haul the new Mk5 CS coaches.

The last two Cl.121 bubble cars have secured futures, 121020 in preservation and 121034 as a route learner.

All GWR operated Cl.143 DMUs are in the new GWR livery.

All Cl.185 DMUs are now in the new TPE livery.

The last Cl.170/4 in First livery was 170420.

One good unit has been formed from 315840/848 reported damaged in the last issue.

New:

EMUs:

345013	345014	345015	345021
345023	387166	387167	387168
387169	700129	700138	700139
700140	700141	700142	707013
707014			

Transferred: (# into preservation)

Locos:

08585 LHG	08588 ZA	08648 HE
08774 WI	08785 TPK	08809 TSS
09106 DAG	31285 WEA	31459 WEA
37146 (ALY)	37604 (KM)	43033/148 (LB)
68023-25 BH to CG		D8059 CPR
12 'Sarah Siddons' (ZG)		

Steam:

563 FMW

DMUs:

51370 TJT to GWR
121020 (55020)# BWR 121034 (55034) CD

EMUs:

4 VEP 76875 (3545) NRM to EKR
319421 (LM) 377163/164 to SET
42408/10/13/19 (BI) to (ZG)
64540 from 315840 has replaced 64555 in 315848 due to accident damage with remaining cars stored

Coaches:

4786 NYM to CHV
6340 (ZN) 6344 LR 6346 EC
DBSO 9711 CQ 96371 (LR)
40205/21, 41052, 42056/77/78, 42564 (ELY)

Re-numbered / Transferred: (exported Italy)

7106 98.23.2700.003-6 TFT

Steam Status:

926 S to A and re-numbered from 30926
7029 O to A 30120 A to S

Names: (+ re-applied)

150275 The Yorkshire Regiment
158854 The Station Volunteer
390006 Rethink Mental Illness



158854 (Terry Lea)



390006 (Iain Gardiner)

Recent but not previously illustrated:



450127 as reported in Sep / Oct 2017
(Mike Brook)



350370 as reported in Jul / Aug 2017
(Peter Davis)



88009 as reported in Apr 2017 (Terry Lea)



88008 as reported in Mar 2017 (Terry Lea)



57002 as reported in Dec 2016 (Colin James)



375701 as reported in Dec 2016 (Colin James)

The Fearless Foxes

43061 as reported in Nov 2016
(Andrew Turnidge)

William Roscoe

508123 as reported in Nov 2014 (Bill Wilson)

John Denyer

MPV 98926 as reported in Nov 2014 (Bill Wilson)

Ed Cluderay

20227 as reported in Jun 2013 (Colin James)

Harold Wilson

507008 as reported in May 2013 (Bill Wilson)

Eric Machell

DR 75406 as reported in Dec 2012 (Bill Wilson)

Operations Inspector Stuart Mason

507023 as reported in Apr 2012 (Bill Wilson)

Councillor Jack Spriggs

507033 as reported in Apr 2012 (Bill Wilson)

Repeated Names:

Ecclesbourne Valley Railway 150 Years

a better photo of 153383 (right number this time)
without the odd colour from reflections
(Jul / Aug 2017 issue)

Names Removed:

66058 Derek Clark

For Scrap:

CF Booths 20177

EMR Kingsbury 96383

New Codes:

Depot / Location:

TFT Transporto Ferroviario Toscano

Pool:

HAPC ScotRail Cl.43 HST power cars

ICHP 125 Group Cl.43 HST power cars

The following is an updated list of the remaining namings promised in the last issue, including the locos again as several have now been submitted. The names below are new or have been fitted / applied since 2011 that we have not yet illustrated on all stock listed in our **NAME DIRECTORY** (steam & industrial locos excepted). Please note I only want photos of nameplates in focus, straight and centred side on. Photos supplied of those recently requested will be shown as and when space permits. (* re-applied, \$ temporary, # supplied but not straight on or in focus)

Locos:

08460 SPIRIT OF THE OAK
08499 Redlight
08611 Longsight TMD (since removed)
08624 Rambo Paul Ramsey
08630 Celsa Endeavour
08993*# Ashburnham
20096 Ian Goddard 1938-2016
D6508* Eastleigh
43082 RAILWAY Children – Fighting for street children (amended)
45133 \$ Brian Lockey (one side only)
Gerald Lambert (one side only)
60087 # CLIC Sargent
66748 West Burton 50
66776 Joanne
68021 # Tireless
88007 Electra
2-10-0 90775 THE ROYAL NORFOLK REGIMENT

DMUs:

150275 The Yorkshire Regiment

EMUs:

350377 Graham Taylor OBE
357007* Sir Andrew Foster
375623* Hospice in the Weald
375619* Driver John Neve
375710 Rochester Castle
375714 Rochester Cathedral
390010 Cumbrian Spirit (amended)

Track Machines:

DR 73939 Pat Best
DR 76923 Gavin Roberts
DR 98923+98973 Chris Lemon

Coaches:

348 Topaz
351 Sapphire
1211 CAR No. 1211
1566 Caerdydd
3348 INGLEBOROUGH
3360 CAR No. 3360
3362 CAR No. 3362
3384 PEN-Y-GHENT
99025 Amber

NAMEPLATE SURVEY

Whilst new nameplates (steam & industrial locos excepted) are reported in each issue of **TRACKS** along with those since January 2011, illustrated as and when a photo is submitted, it is interesting to look at nameplates outside those parameters that are still being carried. In particular those nameplates with an unusual style will be featured in this series. So please submit a photo if it fits the criteria.



08774 privately owned by AV Dawson, Middlesborough, has carried the name 'ARTHUR VERNON DAWSON' since 1st January 1990 though it originally had extra words '1938-1988 50 YEARS' when it was written as opposed to the cast plate now carried Wishaw, 2nd November 2017 (Terry Lea)

TRANSFERRED STOCK



above 51909 + 56271 moved from Midsomer Norton South (SDH) as reported way back in January 2014 issue but only now shown at their new home, Cranmore, ESR, 8th October 2017 (Keith Blackman)

NEW STOCK



above 800026 (811026)
Hitachi, Newton Aycliffe,
2nd October 2017



right 700141 Bedford (12.29)
12th October 2017
(Graham Stockton)



above & right
707028 + 707029
Reading
(10.24) 15th October 2017
(Graham Stockton)





above 70816 the last of the 'new' batch yet to be illustrated on 6C29 Filton Abbey Wood - Hinksey Yard, Swindon (18.30) 16th September 2017 (Colin Pidgeon)

left 387166 + 387167 Northampton (15.34) 18th October 2017 (Graham Stockton)

below 374008 St Pancras (14.57) 15th October 2017





left 700014
West Hampstead
(14.47)
2nd September 2017
(Colin James)



above, left & below
700012 (10.20), 700001 (10.17)
& 700123 (12.23) Bedford,
6th September 2017 (Graham Stockton)



left 700039 (14.35) right 700007 (14.30)
West Hampstead
2nd September 2017 (Colin James)

LIVERIES

*This section will endeavour to show all new liveries / variations or those existing ones where not carried on the stock before. Liveries that become 'extinct' will also be covered. As with names, it may take a while after the livery application before a photo is sourced from members. New liveries may also be shown in other articles: 73133 in **EASTLEIGH WORKS REPORT**, 31459 in **PRESERVATION GALAS** (NVR Cl.31 60th Anniversary) & 319383 in **DAYS OUT**.*



left the missing DMU class yet to be illustrated in new GWR livery, 143621 Paignton, 27th September 2017 (Keith Blackman)

below 67015 the second of the two Cl.67s with 'Leading etc...' branding, Cardiff Central (10.17) 29th September 2017 (Mike Brook)



not previously illustrated and now having moved from the seclusion of Bournemouth Depot, 73133 is seen at Eastleigh Works, 2nd October 2017 (Carl Watson)





158887 Eastleigh (12.55)
28th September 2017 (Carl Watson)

above & below the new SWR livery is now appearing on various units



444040 Eastleigh (12.05)
28th September 2017 (Mike Brook)



five ScotRail Cl.170/4s,
170425/428/430/433/450 were
rebranded for Halloween as
seen on 170430 (top to bottom
50430/56430/79430) Edinburgh
Waverley, 23rd October 2017
(Iain Gardiner)



ICRS SALES

We have published 10 books since 2009, 4 are no longer produced and 4 are new 2017 editions (orange covers). The other 2, UKRS10 & 11 are currently unavailable having sold out with new editions due in 2017/18.

Books and Sundries can be ordered either:

ideally via BACS (bank details supplied with your order to editor@intercityrailwaysociety.org),

online via PayPal at www.intercityrailwaysociety.org

or by post from **ICRS, Mill of Botary, Cairnie, Huntly Aberdeenshire AB54 4UD**

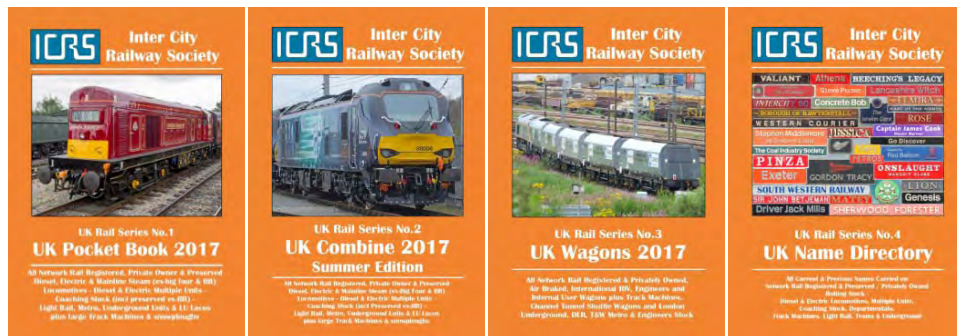
Please make cheques payable to **ICRS**, P&P is **FREE** to the **UK** for orders over £7.99 (multiple books may be posted separately depending on when they are released and/or weight for the cheapest postage option)

Whilst we do our very best to dispatch orders as soon as possible, we are all volunteers, so please allow 14 days for delivery, especially when a new book has just been released.

Note A5 books aster normally posted direct from the printers but the Pocket Book and Sundries are held by Trevor & Chris so may possibly be posted separately from books

If you have not received your book after that time please **ONLY** then contact **Trevor / Christine** (see p2 for details)

All books, except **UKRS01 Pocket Book**, are A5 wire bound allowing them to be laid flat and are printed on 90gsm paper with plasticised coated covers which do not delaminate.



BOOKS: (Members receive up to 30% discount on ICRS books)

Titles:	Updated to	Prices	
		Member	Non- Member
New: UKRS01 UK Pocket Book 2017	(1 st Apr17)	£8.00	£11.00
UKRS02B UK Combine 2017	(14 th Jul17)	£12.50	£17.00
UKRS03 UK Wagons 2017	(1 st Mar17)	£10.00	£13.50
UKRS04 UK Name Directory	(10 th Jul17)	£11.00	£15.00
Forthcoming: UKRS05 UK Locomotives 2018	TBC	TBC	TBC
UKRS10 Ultimate Sighting File Vol.1 – Mainline Diesel Locos	SOLD OUT (next ed. due 2018)		
UKRS11 Ultimate Sighting File Vol.2 – Shunters, Mainline Electric & Prototype Locos	SOLD OUT (next ed. due 2018)		

SUNDRIES: (please add £1.50 P&P for orders under £7.99 in total)

Pocket Book cover		£1.50
ICRS pin badge		£2.50
ICRS printed pen		£0.50
TRACKS A5 Cordex binder (12 issues @ 48 / 64 pages: 2014-16)	LARGE	£5.00
TRACKS A5 Cordex binder (12 issues @ 32 / 40 pages: 2011-13 & 64 pages: 2017)	MEDIUM	£5.00
Polo Shirts: Original (logo only)	NAVY (S / XL)	£7.50
	WHITE (S / M / L)	£12.50
Proposed (name & logo)	NAVY (M / L / XL / XXL / 3XL)	£20.00
	GREEN (M / L / XL / XXL / 3XL)	£20.00
	MAROON (M / L / XL / XXL / 3XL)	£20.00

Details of books and sundries can be found on our website and are shown in **TRACKS** from time to time when released or advertised. Order forms for posting can be downloaded from the website.