

TRACKS



Inter City Railway Society – Jan/Feb 2017



Inter City Railway Society

founded 1973

www.intercityrailwaysociety.org

Volume 45 No.1 Issue 529 Jan / Feb 2017

The content of the magazine is the copyright of the Society

No part of this magazine may be reproduced without prior permission of the copyright holder

- President:** **Simon Mutton** (01603 715701)
Coppercoin, 12 Blofield Corner Rd, Blofield, Norwich, Norfolk NR13 4RT
- Treasurer:** **Peter Britcliffe** - treasurer@intercityrailwaysociety.org (01429 234180)
9 Voltigeur Drive, Hart, Hartlepool TS27 3BS
- Membership Sec:** **Colin Pottle** - membership@intercityrailwaysociety.org (01933 272262)
166 Midland Road, Wellingborough, Northants NN8 1NG Mob (07840 401045)
- Secretary:** **Stuart Moore** - secretary@intercityrailwaysociety.org (01603 714735)
64 Blofield Corner Rd, Blofield, Norwich, Norfolk NR13 4SA
filled by senior officials as required for meetings
- Chairman:**
Magazine:
Editor: **Trevor Roots** - editor@intercityrailwaysociety.org (01466 760724)
Mill of Botary, Cairnie, Huntly, Aberdeenshire AB54 4UD Mob (07765 337700)
- Sightings: **James Holloway** - sightings@intercityrailwaysociety.org (0121 744 2351)
246 Longmore Road, Shirley, Solihull B90 3ES
- Photo Database: **Colin Pottle**
- Books:**
Publications Manager: **Trevor Roots** - publications@intercityrailwaysociety.org
Publications Team: **Trevor Roots / Eddie Rathmill**
- Website / IT:**
Website Manager: **Trevor Roots** - website@intercityrailwaysociety.org contact details as above
Social Media: **Gareth Patterson**
Yahoo Administrator: **Steve Revell**
- Events:** Sales Stand: **Christine Field** contact details as above for Trevor
Trip Co-ordinator: **vacant**

Contents:

Officials Contact List.....	2	A View From Above.....	33
Society Notice Board.....	3-5	Accidents	54-55
Events.....	5-6	Days Out.....	24-25
ICRS Sales.....	64	Gone But Not Forgotten	21-22
Regular Current News / Sightings:		Narrow Gauge Matters	36-37
Eastleigh Works Report.....	8-12	OTP Photo Spot.....	58
Franchise News	7	Preservation:	
Freight Matters.....	57-58	Galas.....	43-45
Infrastructure News.....	32-33	Gala Photo Spot.....	31
Light Rail & Metro News.....	41-42	News - 1.....	38-41
Out & About Sightings.....	26-31	News - 2.....	53
Stock Changes.....	59	Rail Tour News	12
Liveries.....	62-63	Rail Tour Photo Spot.....	23
New.....	60-61	Railway Globetrotters - 1.....	46-52
Traffic & Traction News	13-20	Railway Globetrotters - 2.....	55-56
Other Feature Articles:		RHTT Gallery.....	34-35
Advert.....	7	Underground News	42

Front Cover Photo:

Repainted into Europhoenix livery and named, 37608 'Andromeda' sits on top of a test train at Eastleigh Works, 13th January 2017 (Carl Watson)

£2.50 where sold separately

Printed & distributed in the UK by Henry Ling Limited, at the Dorset Press, Dorchester DT1 1HD

SOCIETY NOTICE BOARD

Editor's Comments:

I hope you didn't suffer too much from **TRACKS** withdrawal in January (some clearly hadn't read recent editorials judging by the number of queries we received) but it certainly gave me a chance to have a slightly more relaxed festive period. However I then had to crack on with book preparation and event planning, therefore most of January has been manic, meaning the intended slightly earlier production of **TRACKS** was put back to its normal slot. However as you will see in Publication News our first new edition is out and bang up to date. One downside of losing the January issue is a delay in notifying those of you without computer access of our forthcoming books, but on the upside the usual deluge of orders has been slightly delayed allowing me a window after completing the Combine to edit **TRACKS**...a very small window mind you !!

Well it's a new year and with it brings new challenges both within the Society and the wider world. Whereas we have little control over the latter, the former should see new developments as the year unfolds starting with a substantial new additional section to two of our three main books. Hopefully you will all continue to support us by buying the books. As we didn't manage to attract an **Events Co-ordinator**, it fell to yours truly to fill the gap again. Hopefully what we have planned is a reasonable events programme for 2017 with possibly more to add in the way of Galas to attend. 2017 is the anniversary for several diesel classes and not least the 60th anniversary of the mainline diesels to the UK network following the 1955 Modernisation Plan, so I expect there will be nods to these landmarks at various galas etc, eg the Cl.20 do at WEN.

No room or need for more waffle, so I'll leave you to enjoy the first bumper filled issue of 2017.

Carl Watson:

The end of 2016 saw Carl Watson vacate the role of Chairman with the Society. He has done an outstanding job leading this organisation since April 2009 which, along with his role as Publications Manager has helped cement the reputation that the Society enjoys today.

Over the period of his tenure as Chair, his stewardship of ICRS has been characterised by innovative ideas, strategic thinking and, most valuably, his tireless efforts to increase the credibility and visibility of ICRS within the rail enthusiast community. The resulting goodwill has become a huge asset to us, and the relationships he has fostered with members, supporters and partners will ensure ICRS will prosper and continue to offer opportunities and benefits to our members. By all measures, ICRS has experienced significant progress on his watch with increased membership, quality publications, popular events and financial stability.

From a personal point of view, I would highlight his warm friendship and support, which have been very important to us throughout the last few years. His energy and commitment to the role will be extremely difficult to match.

However Carl, you leave ICRS a better organisation and on a strong footing for those who follow you. So it therefore falls on me, on behalf of the Officials and membership of ICRS as a whole, to thank you for your dedication and the great job you have accomplished in your period as Chair of ICRS and wish you all the very best in your future endeavours.

I would also take this opportunity to thank both Louise Watson, who has stood down as Events Co-ordinator and Stuart Moore who is standing down as Secretary from the AGM. Their hard work and contribution to the Society over the last few years is just as much appreciated as that of Carl, and I again offer my sincere thanks on behalf of the Society for their efforts.

As I always seem to be reminding members, all roles within the Society are undertaken on a voluntary basis, and there will come a time when, for whatever reasons, people decide the time has come to step down. Such is the case here.

However, I also firmly believe the Society is in good hands with Trevor, Peter and Colin at the helm, together with all officials and contributors. Notwithstanding my comments above, if anyone has the ability to match the energy and commitment of Carl going forward, it is these guys!

Simon Mutton, ICRS President

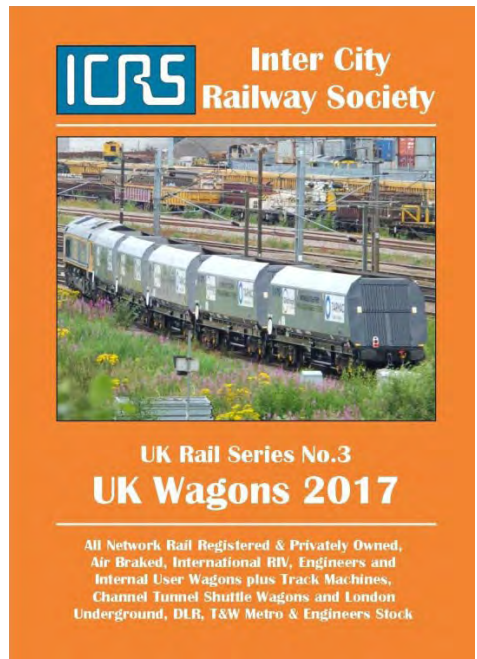
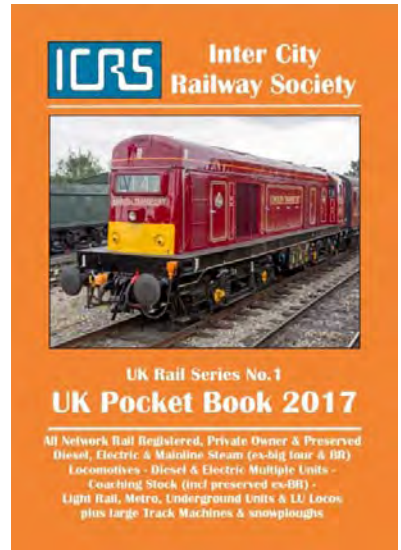
Publications:

As some of you may already know the **UK Combine 2017** is the first of our 2017 new editions to be released and if you are lucky, then those that ordered early will have already received their copy in the post (by the time you read this in print) as it was released on the 27th January updated to the 23rd January 2017...can't get more up to date than that !! Those that were aware from our website have been pre-ordering the next two books, **UK Pocket Book 2017** (due mid March) and **UK Wagons 2017** (due early April).

All the books have been painstakingly updated and being honest we have ironed out a few glitches that have crept in over the years. We have also ensured all the new A5 ring bound books have the plasticised cover which will not de-laminate as recent editions have been doing. So we hope they are the best on the market, so get your orders in now. The **Wagon** book has numerous changes with many new wagons, scrapings and conversions.

As prices have been held since 2015, you will see on the rear cover there has had to be a price rise due to rising costs of production / delivery. However you will now get more for your money as we have included in both the **UK Combine** and **UK Pocket Book** preserved ex-BR coaches for the first time, that's around 1400 more coaches for you to underline !! This now compliments the preserved Locos / DMUs / EMUs and steam added over recent years and makes those two books unique in the market for their content.

If you wonder why the cover photo on the Pocket Book was used, as it will be the 60th Anniversary of the Cl.20 introduction in 2017, we thought a photo of 20142 was apt.



Books / Sundries Orders:

Postal orders should now be directed initially via Trevor & Christine (see rear cover for address). At present the **UK Combine** is being posted out direct via Minuteman Press (Hedge End, Southampton), who print our ring bound A5 books. **UK Wagons** will also be posted out from Minuteman but the **UK Pocket Book** will be dealt with by Trevor & Chris. For all book enquiries please contact Trevor / Chris (page 2 or rear cover for contact details).

TRACKS Binders:

Please note that as there will only be 10 issues of **TRACKS** in 2017 therefore if you are planning to buy a binder the MEDIUM binder will fit more snugly than the LARGE binder. For those with binders you will realise that 2017 is the last of the stickers supplied so we hope to get additional stickers for 2018 onwards.

Membership Matters:

New Members: (* ex-members re-joined)

Bryan Allnut (Loughborough), Alexander Barnard (Cheltenham), David Besley (Bromsgrove), Jason Blackman (Trowbridge), Keith Blackman (Chippenham), Darren Carey (Rowley Regis), Philip Carr (Barnsley), Darren Dawson (Huddersfield), David Gordon (Ely), Brian Greenwood (Blackburn), Stephen Hewitt (Leicester), Roger Hinde (Newport Pagnell), Martin Horne (Solihull), Desmond Ireland* (Morecambe), Geoffrey Jukes (Wolverhampton), Ian Kitt (Camberley), Alan Lee* (Mold), Kevin Miller (Portsmouth), Steve Milsom-Payne (Irthlingborough), Andrew Norris (Yeovil), Martyn Priday (Gloucester), Steven Rose (Crawley), Roger Stiles (Bristol), Michael Teece (Telford), Tony Whitehead (Heysam) - a warm welcome to you all.

Society Magazine TRACKS:

Distribution: **TRACKS** is distributed direct from the printers to members in a clear plastic wrapping with an address carrier sheet (reverse printed with a Renewal / Reminder form if appropriate). If any member fails to receive their copy after one week from the estimated delivery date below then please contact the **Editor**. For current info during the month refer to the **TRACKS** page of our website.

The latest date for articles / info for the **Mar 2017** issue is **Tuesday 28th February 2017**
with delivery to members after **Wednesday 8th March 2017**
please check the **TRACKS** page on the website for date of posting from the printers

Magazine Contributors: (* new this month) Thanks to **Chris Addoo, Charles Baldwin, Alex Barnard*, David Berg, Spencer Billingham, Paul Clifton, Peter Davis, Brian Derricote, Denis Dey, Martin Evans, Alex Ford, Iain Gardiner, Robert Hawker, Roy Hitchin, James Holloway, Geoff Hope, Colin James, Rod Johnson, Ian Knight, Nigel Mathews, Ian McAlpine, Keith Partlow, Colin Pottle, Mike Rumens, Norman Smith, Paul Sumpter, Ray Smith, Graham Stockton, John Teasdale, Roger Thomas, Andrew Turnidge, Malcolm Wallace, David Williams, Carl Watson & Trevor Roots**. We are sorry if anyone has been missed. Photos not credited are by **Trevor Roots**.

MISC NEWS

Moveright International Ltd, well known for hauling locos around the UK have produced the 2nd of their occasional newsletters '**KEEPING THE RAILWAY INDUSTRY MOVING**', which features a selection of projects which they have recently undertaken. As can be seen, in addition to their transport activities, they are able to undertake a wide range of ancillary services, ranging from:

- Specialised lifting and recovery
- Locomotive hire and maintenance
- Provision of railway tamping machines
- Coded welding and fabrication
- Machine shop capabilities

To view the newsletter, please go to the **REFERENCE** page on our website.

EVENTS

AGM

FL Basford Hall Yard / Crewe Arms Hotel – Sat 8th April 2017:

Our AGM is to be held at the Crewe Arms Hotel following a visit to Basford Hall Yard. The trip around Basford Hall Yard starts at 13.00 from either the Freightliner main office at the southern end of the access road or if new security gates have been fitted then at the northern end, confirmation nearer the time. If it is at the southern end please do not dawdle along the access road taking numbers as you will see them on the visit or on the way back. The cost for the visit is £15 payable in advance (non-returnable). Please either send a cheque made payable to ICRS to Trevor Roots (address on page 2) or pay by BACS to our bank Acc No: 22032668 Sort Code: 30-99-47 quoting your membership number (or name if forgotten) followed by AGM. Confirmation will be given that we have received your remittance if you provide an email or contact tel no, otherwise include a sae.

Following the visit there will be food at the Crewe Arms Hotel at 14.30 with the AGM starting whilst we eat at 14.45. We should be able to finish no later than 17.00 if not earlier, so trains can be caught. Please let the Secretary, Stuart know asap (contact details on page 2) so that food can be organised.

OPEN DAYS

DRS Carlisle Kingmoor, 10.00-16.00 – Sat 15th or 22nd July 2017 (TBC):

The annual DRS Open Day is to be held at Carlisle Kingmoor in 2017 most probably in July. The exact date is still TBC. We will be there with our sales stand.

MEMBERS ONLY EVENT

Long Marston – Sat 10th June 2017:

We have arranged to tag onto the only event planned at Long Marston in 2017. The charge is £15 paid on the day and all goes to charity but you **MUST** inform us in advance that you are attending and **ONLY** if you are 100% certain. If that is so please contact our President, Simon (details on page 2) by the cut-off point of the 10th May 2017 so we can provide the organisers with a list of attendees.

Please arrive around 09.15 with the aim to start at 10.00. Yard lists will be available for sale on the day for you to check off stock. Coffee and cake will hopefully be available from around midday but feel free to bring refreshments. The site must be clear by 15.00, so that is a decent amount of time to wander freely around the site, however you must adhere to the rules below and respect this opportunity.

- **No public display of your photographs either online, in magazines or any social media.** The adherence to this rule is what allows visits to continue every year. Any breach will result in membership being withdrawn.
- No climbing onto, between or underneath stock.
- No entry into any building or enclosed area unless invited.
- Wear good walking shoes, bring waterproof clothing. Hi-viz jackets are preferred but not essential (no rail movements on the day).
- You are entirely responsible for your own safety

There is parking on site and access is off Station Road. Programme your Sat Nav with either CV37 8PL or CV37 8RP or if like me you prefer maps, Station Road runs just south of Long Marston village between the minor road to Mickleton and the B4632 Mickleton to Stratford-upon-Avon. The entrance is on the south side of Station Road at the Long Marston end near the 'The Greenway' cycle path.

Eastleigh Works – Sat 9th Sept 2017:

Following our previous successful visits we are organising another Members Only visit to Eastleigh Works, though instead of in June it is in September which has allowed us to visit Long Marston. It will probably start at 14.15. As in 2016 it will be necessary to make a charge (TBC) to cover the normal visit fee (which Arlington donate to charity) and organising stewards, but for that you will get access to all areas until 16.30 and cab rides. There will be refreshments (TBC) which will be subsidised by the Society. Nearer the time firm details will be provided with info on how to apply for a ticket.

PRESERVATION GALAS

Yet to confirm which Galas we will attend with our sales stand.

A new feature, the following is a list of those preservation galas that have been announced for 2017 (codes as used in Combine / Pocket Book):

Feb	18-19	ELR	D	May	5-7	SWR	D	14-17	WEN	D	
	25-26	NVR	S		13-14	EVR	M	(Cl.20 Anniversary)			
March	3-5	KWV	S		18-20	SVR	D	21-24	SVR	S	
	3-5	LLR	S		21	SVR	MT	23-24	LLR	D	
	11-12	SPA	D	Jun	2-4	NVR	MT	23-24	EOR	D	
	17-19	SVR	S		3-4	ELR	D	23-24	ELR	D	
	17-19	MHR	S		(small locos)			Sep/Oct	29-1	IOW	D
	18-19	EVR	D		9-11	WSR	D		30-1	RSR	D
	18-19	ELR	S		9-11	NNR	D	Oct	1	BRC	S
	25-26	RSR	D		24-25	EKR	D		6-8	BBR	D*
Mar/Apr	31-2	SWR	S	Jul	7-9	ELR	D		13-15	NVR	D
	31-2	BBR	D		13-15	WEN	D		14-15	ELR	S
Apr	1-2	RSR	S	Aug	3-6	SPA	D	Dec	29-30	GWR	MT
	7-9	NVR	D		12-13	EVR	D				
	17-19	SVR	S	Sep	1-3	NNR	S				
	21-23	NNR	S		2-3	HST	D				
	22-24	MHR	D		9-10	NVR	S				
	22-23	EOR	D		9-10	RSR	S				

D - Diesel (* Deltic 40th)
M - DMUs
S - Steam
MT - Mixed Traction

ADVERT

The following was received from Dan Webster, Chairman of a newly formed organisation.

"We are a newly formed Society looking at preserving and promoting the work of Regional Railways. The Society is aiming to be a source of information, photographs and stories from the era along with aiming to preserve artifacts and items of railwayana from the era. Obviously in the longer term we will be looking at preserving vehicles which operated under Regional Railways, aiming to restore the Regional Railways livery on rail vehicles. The Society would like to build up contact with organisations within the industry to see whether the two organisations may be able to work together at some point, looking to use our combined knowledge to create articles and information, ensuring Regional Railways are never forgotten or omitted from the history books."

There may be ways that ICRS can help in the future but initially I ask members if they are personally interested in supporting this fledging Society to look at their website www.regionalrailways.org

FRANCHISE / NETWORK NEWS

With Cl.387s now operating out of King's Cross, Cl.321/4s operated by GTR from Hornsey Depot were taken out of service on the 12th December 2016. Once more are in use and Cl.700s start operating Cl.317s will also be withdrawn from GTR service, hopefully by April 2017. Once Cl.717s appear by 2018 then the Cl.313s will disappear after 40 years in service on the route.

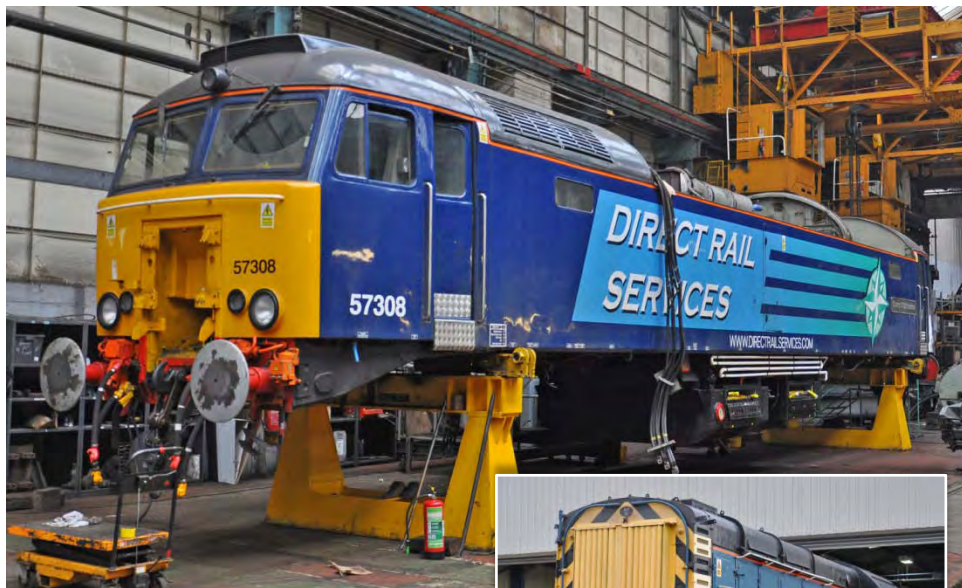
Subject to DfT approval National Express has sold the c2c franchise to Trenitalia, the passenger rail transportation company which is part of FS Italiane Group. This was borne out of partnership talks regarding future franchise bids.

Porterbrook Leasing and Northern are developing a bi-mode Cl.319 to allow flexibility for operators of an EMU on partially electrified sections of the network. A diesel alternator is to be fitted beneath each driving car. Intended to enter service in 2018 detailed design work is being undertaken by Brush which has received 319427 as the test bed.

Stadler has won the contract to provide 52 x 4 car EMUs for Merseyrail by 2019/20 to replace the Cl.507/508s.

EASTLEIGH WORKS REPORT

by **Norman Smith** & photos by **Carl Watson**
for the period 1st December 2016 up to 27th January 2017



Locos: 57308 came in from Crewe Gresty Bridge for an overhaul on the 1st Dec (see above taken on the 16th Dec).

57304 in the latest DRS livery left for Willesden Brent on the 1st Dec.

37219 t&t DBSO 9701 arrived with a NR test train from Hither Green on the 6th Dec and left to return there later that evening. 37219 had a problem with the traction equipment and was stopped in Eastleigh Yard. A rescue loco was sent, 37611, and they returned to Derby RTC on the 9th Dec



Acquired by Raxstar, 08879 arrived by road from Margam Yard on the 12th Dec (see above left).

08790 arrived by road from Wembley Yard on the 13th Dec (see centre right taken on the 15th Dec) and 08454 left for Edge Hill on the same vehicle (see above right taken on the 8th Dec).

73961 t&t 73965 were on/off site with a NR test train from the 12th to the 15th Dec.

37608 came in for a repaint on the 15th Dec.

66757 brought in Translator Set T7, 64664/64707, from Tonbridge West Yard on the 19th Dec. 66757 took Translator Set T5, ADB975974/978, to Tonbridge West Yard on the 23rd Dec. They returned on the 28th Dec behind 66763.

Colas locos on/off site during the Dec were: 66847/850, 70809.



37099 + DBSO 9708 t&t DBSO 9714 were on/off site with a NR test train from the 3rd to the 4th Jan.

66712 came in for repairs on the 5th Jan, and left the following day

66751 took Translator Set T7, 64664/64707, to Doncaster Wagon Works on the 6th Jan.

66301 came in for a repaint on the 12th Jan.

66778 came in for repairs on the 12th Jan, and left a day later.

37608 had received full Europhoenix livery and 'Andromeda' nameplates by the 12th Jan (see below showing opposite side to front cover).



37604 arrived from Derby RTC with a NR test train on the 12th Jan. It did a test run later that night t&t with 37608 and they left for Derby RTC on the 13th Jan.

66716 + 66850 came in for fuel on the 13th
37025 t&t 37099 were on/off site with a NR
test train from the 16th to the 19th Jan
(see 37025 left taken
on the 17th Jan)



57007 + 57011 + 57303 arrived from Crewe Gresty Bridge on the 25th Jan (see 57001 above top).

37175 t&t DBSO 9703 were on/off site with a NR test train from the 25th to the 26th Jan.

66774 arrived for an exam on 27th Jan.



above 442424 with jumper cable covers in place, not something seen when in service
23rd Jan



Units: 20142 brought in LUL 4-TC 70823/71163/76297/76324 for overhaul from West Ruislip on the 8th (see above) and left light engine to Clapham Jct the same day.

Cl.444/450s receiving modifications - Dec: 444037, 450122, Jan: 444011/034, 450123/126

Cl.455s receiving traction system upgrades by Vossloh - Dec: 5701/24/39/50, Jan: 5703/04/06/18

Cl.442 moves during Dec/Jan were, showing loco:

1/12	in	2401	from Three Bridges	47815
2/12	out	2421	to Ely Papworth Sidings	47815
5/12	in	2417	from Three Bridges	37884
9/12	out	2401/2417	to Ely Papworth Sidings	37884
5/1	in	2405/2424	from Ely Papworth Sidings	47815
6/1	out	2423	to Ely Papworth Sidings	47815
25/1	out	2405/2424	to Eastleigh Depot	66599

Wagons: Wagon Trips in/out were:

1/12	FL in	92636, 93389, 97700/747/751	
5/12		73963 brought in 70.9310.011-0/012-8 from Tonbridge West Yard, returning there on the 6 th with 70.9310.001-1/005-2/006-0/007-8/011-0/012-8	
8/12	DBC in	70.6905.018-1, 80.2398.505-0, 87.4333.053-4	
	FL in	93322/363/469	FL out 92630/636, 93389
15/12	FL in	97704/743	FL out 93322/363/469, 97746
20/12	DBC in	80.2398.554-8, 87.4333.021-1	
	DBC out	70.6790.002-3, 70.6905.018-1/035-5, 80.2398.505-0, 87.4333.029-4/036-9/056-7	

22/12 FL in 93315, 97728/770 DBC in 87.4333.001-3/015-3
 3/1 DBC out 70.6790.076-7
 10/1 DBC in 87.4384.002-3 DBC out 80.2398.554-8, 87.4333.053-4
 12/1 FL in 93341, 97720 FL out 93315, 97738
 17/1 DBC in 80.2398.533-2, 80.4736.032-0, 87.4384.003-1 DBC out 87.4333.015-3
 19/1 FL in 92562/625, 93307, 97721/758, 640219/220
 FL out 93341, 97728/747/751
 24/1 DBC in 87.4333.054-2

Coaches: Coach Trips in/out were:

16/12 66741 took 3098 and 35469 to Eastleigh Depot.
 23/12 57312 brought in Mk2d BFK 17167 from Crewe Gresty Bridge and returned light engine to Willesden Brent a couple of hours later.
 25/1 57007 took 17159 to Norwich Crown Point



Riviera Trains have now moved their operations from Eastleigh Depot to the Works, with movements:

12/1 66111 + 66177 + 1671, 1691, 3098, 3123, 4927, 21245
 15/1 66144 + 1651, 1832, 3121, 3147, 3149, 4949, 4959, 4991, 4998, 35469
 26/1 66066 + 1813, 3066, 3068, 3120, 4946, 5341, 6310, 21269, 21272, 80041

These have joined the other three that were already on site: 1657, 3097, 3119



right top TSO 4991 right RMB 1832

66066 arriving with last trip of Riviera coaches (1813 leading) 26th Dec



OTP: Rail Grinder C2102 DR79241-47 arrived from Chaddesden Sidings for maintenance on the 3rd Dec. Work completed it left for Washwood Heath Down Sidings on the 10th Dec.
 Stone Blower DR80211 arrived from Taunton on the 23rd Dec.
 66507/66617 took RM900RT DR76503 and 70.9301.001-3 to Willesden ET
 Stone Blower DR80211 left for Bristol Kingsland Rd on the 6th Jan.
 Robel MMT DR97504/604/804 came in for planned maintenance on the 9th and 10th Jan.
 66617 brought in RM900RT DR76503 + 70.93010.01-3 from Willesden ET for maintenance on the 22nd Dec (see below overleaf taken on the 4th Jan).



RAIL TOUR NEWS

The Yuletide East Yorkshireman by Dave Spencer: Regular readers, not that believe I have any, may remember I was booked on this tour last year when DRS pulled the plug because of bad behavior, so when Pathfinder wrote to me offering me a seat at last year's price it seemed churlish to refuse! The charter was to be the 1Z17 Swindon to Scarborough hauled by 67029 from Swindon to the Severn Valley Railway at Kidderminster where D1015, masquerading as D1031 'Western Rifleman' on one side, took over. Whilst I personally do not like these number changes I do believe 'he who pays the piper calls the tune' and if the owners want to make changes it is their right, whatever I think. I was due to pick up the tour at Stourbridge Jnct at 08.31 but that came and went, after which the platform indicator stopped showing times and just said 'delayed'. Eventually it arrived and we left at 09.14, some 43 minutes late. Apparently the 67 had got the special to Kidderminster on time but the Seven Valley had a points failure and D1015 could not be released.

Network Rail would not let us into Birmingham New Street, so we turned left at Soho North Jnct and covered the hard to get curve to Soho East Jnct and on to Tame Bridge Parkway, the stop for Birmingham passengers. We then covered more freight track from Ryecroft Jnct to Water Orton West Jnct where we were still 36 mins down. After that we continued straight up the Midland main line calling at Derby as far as Swinton then on through Mexborough and the Doncaster avoiding line to Thorne North where those who wanted Scunthorpe Steelworks got off. We had gained some time and left only 22 mins down but it was not to last. We picked up stowaways at Thorne (old ladies who hadn't noticed this was a twelve coach train and not a two car DMU) and stopped at Goole to set them down. Continuing first east then north we reached our second stop at Beverley some 31 mins down and the special carol service in the minster had already started without us. It was this section I came on the tour for as I had never been beyond Cottingham northbound and not been south since 1964. We picked up more stowaways here who were charged to travel to Scarborough with us and so on to Bridlington where it all went pear shaped. Having lost our path on the single line section we had to wait and got away 47 mins down and then lost more time to Hunmanby 62 mins late which we maintained into Scarborough, thus leaving us less than forty minutes to look around and get something to eat. Compared with home it was bitterly cold as well.

Not sure why we rushed back as at departure time there was no train. It was eventually propelled into platform 1 and we left 21 mins late and lost time on every leg being 33 mins down at Bridlington, 49 mins at Beverley and 51 mins at Thorne North. Our route back to Mexborough was the same then we were routed via Thrybergh Jnct to Masborough then down the old road to Chesterfield where we were down to 34 mins late and we were hopeful of more gains. Indeed at our first set down at Derby we were only 29 mins down and hope sprung eternal but it flattered only to deceive. We were due to return via Whitacre but kept on the main line then across Sutton Park and Walsall to Tame Bridge Parkway by using the cut off which kept our loss down to 30 mins. Held by signals at Soho North Jnct and a slow decent of Old Hill bank we got back to Stourbridge Jnct 39 mins down, slightly better than rail tour standard time.

It was a good day with good crack (*thought he was off his head, ed !!*) and good company on board and whilst there was no new track for me, everything east of Doncaster was rare for me as I very hardly have cause to go that way. Was it the first visit of a Western on the Hull to Scarborough route? People seemed to think so but I have no knowledge so do any members know different?

TRAFFIC & TRACTION NEWS

December 1

66764 passed Walsall at 14.26 on 10.51 Tinsley Yard – Coton Hill aggregates (David Williams)



December 3

59206 was seen at Westbury at 10.04 on 6C81 Colnbrook - Whatley (Andrew Buckley)



December 6

37800 was seen at Leicester at 14.14 (Rod Johnson)



37401 Preston - Barrow, Grange over Sands (Martin Evans)



December 7

47854 t&t 47804 passed Swindon at 12.30 on 1Z83 Barrow-in-Furness - Bath (photo at end)

December 8

60066 passed Wrexham General on 6V75 Dee Marsh - Margam steel empties (Martin Evans)



December 9

66025 passed Burton-upon-Trent at 13.08 on Doncaster Belmont Yard – Eastleigh East Yard (Peter Davis)



66743 on more mundane freight duties passed Burton-upon-Trent at 13.25 on 6V09 Tinsley Yard GBRF - Coton Hill Yard (Peter Davis)



December 10

60044 was seen approaching Wrexham General at 11.20 with a London Euston to Preston railtour run by Hertfordshire Railtours, the 60 having replaced a 90 at Bescot (Martin Evans)



December 12

66080 passed Bedford at 09.12 (photo at end)

December 14

97302 + 97303 passed Walsall at 13.04 on 12.03 Coleham ISU – Derby RTC (David Williams)



December 17

A half hour at Carstairs produced the following (Iain Gardiner):

12.49 66162 on 424U Grangemouth (EWS) - Daventry Int.



13.07 325001 + 325012 on 182W Shieldmuir Mail Terminal - Warrington Royal Mail



13.21 68018 + 68017 on 414T 06.40 Daventry DRS (Tesco) - Mossend Euroterminal



37421 t&t 37175 on a NR test train ran a return trip from Mossend – Aberdeen and were seen at 19.39 at Elgin awaiting the passage of the Aberdeen – Inverness service before continuing east on the single track.



December 20

20096 + 20107 t&t 20905 + 20314 passed Burto-upon-Trent at 10.14 on 7X10 Fenny Compton - Litchurch Lane (see photo at end)

December 21

37424 (37558) t&t 37405 makes a smoky departure from Norwich at 12.36 on 2P20 12.36 to Great Yarmouth (photo at end)

66546 passed its own reflection at Didcot at 11.45 (Alex Barnard)



December 22

66716 + 66847 passed Swindon at 10.50 on OA20 Westbury to Hinksey Yard (Colin Pidgeon)



66613 passed Walsall at 14.10 on 09.19 Hope Earles Sidings – Walsall cement (David Williams)



December 23

66044 passed Ely at 14.05 on 4L45 09.36 Wakefield - Felixstowe South (Keith Partlow)



56087 t&t 56302 was seen arriving at 11.56 with 6T56 Westbury Yard - Swindon Cocklebury Yard, Swindon (Colin Pidgeon)



December 26

08389, Celsa 3 (08630) & 08818 were all seen at Celsa Steel, Cardiff at 09.20 together with Celsa 2 (08924) and DH50-2 [246V] TH 0-6-0DH (Steve Revill & photo at end)



The line up of stored Cl.70s at Leeds Midland Road through Christmas was 70017/09/01/07/03/14/10 behind 90041 with 66561 adjacent the shed (Andrew Turnidge)



December 28

60054 was seen stabled at Westbury at 09.38 (Andrew Buckley)



LMT 139002 was seen approaching Stourbridge Jct at 12.52 (Rod Johnson)



December 29

66019 t&t 66177 passed Stratford at 12.13 on a freight line tour from London Victoria and return calling at London Gateway Container Terminal and Isle of Grain Terminal (David Berg)



December 30

66701 passed Heald Green at 11.19 (Roy Hitchin)



66776 at Wymondham Abbey, MNR at 12.53 on the front of the 12.00 Dereham - Wymondham Jct during the Winter Warmer Gala (Keith Partlow)



90034 prepares to depart at 06.27 on 1D02 King's Cross - Leeds (Colin Pottle)



January 3

92023 waits at Crewe before it is taken to Loughborough for works attention at 13.20 (Martin Evans)



January 10

60074 passed Gloucester at 11.12 on Robeston – Westerleigh oil tanks (Robert Hawker)



January 4

66779 passed Westerfield at 12.23 on 4Z33 11.22 Felixstowe South – Doncaster (Keith Partlow)

66433 passed Gloucester at 10.49 Daventry – Wentloog (Robert Hawker)



January 11

66009 passed Gordon Hill at 12.03 on Bow Depot - Heck Plasmor PS (David Berg)

59003 passed Walsall on 10.51 Tinsley Yard – Coton Hill aggregates (David Williams)



68001 + 90015 passed Gordon Hill at 11.53 on Norwich Crown Point Depot – Bounds Green Depot (David Berg)

153364 failed in service at Nuneaton, blocking the platform all day and 153356 was brought in at 11.14 to cover (Brian Derricote)



January 12

66002 + 67021 arrived at Crewe at 14.47 with a couple of empty flats from Warrington Arpley,

where 66002 was detached, before moving on to the Electric depot and then on to Bescot (photo at end)

January 18

86638 + 86614 passed Northampton at 15.30 (Rod Johnson)



January 19

66097 passed Stafford at 14.45 on Dowlow - Theale Hope cement (Martin Evans)



January 21

47812 was seen stabled at Derby with 2 barrier coaches (Andrew Turnidge)



31452 was seen stabled at Derby (Andrew Turnidge)



January 23

57602 t&t 57603 passed Swindon at 12.36 on 5Z41 Swindon - Old Oak Common (Colin Pidgeon)



66085 passed Swindon at 13.35 on 6Z16 Acton Yard - Moreton on Lugg (photo at end)

January 24

66091 passes Whittlesey on a frosty morning at 08.09 on 6L39 Mountsorrel - Norwich Trowse (Colin Pottle)



66035 passed Eastrea Cross Drove at 11.07 on 6L41 Mountsorrel - Barham (photo at end)

47812 taking 319453 + 319214 for storage passed Isham at 13.34 on 5V67 Cricklewood - Long Marston (Colin Pottle)



January 26

37099 + 37025 passed Harrowden Jnct at 12.48 on 0Z37 Tonbridge West Yard - Derby RTC (Colin Pottle)





47854 t&t 47804 Swindon (12.30) 7th December 2016
(Colin Pidgeon)



20096 + 20107 t&t 20905 + 20314
Burton-upon-Trent
20th December 2016 (Rod Johnson)



66085 Swindon (13.35) 23rd January 2017
(Colin Pidgeon)



66035 Eastrea Cross Drove, 24th January 2017
(Colin Pottle)



66080 Bedford (09.12)
12th January 2017 (Graham Stockton)



37424 (37558) t&t 37405
(12.36) 21st December 2016 (Keith Partlow)



66002 + 67021 Crewe
12th January 2017 (Martin Evans)



left
DH50-2 [246V]
TH 0-6-0DH + 08389 +
Celsa 3 (08630) &
Celsa 2 (08924)
Celsa Steel, Cardiff
26th December 2016
(Steve Revill)

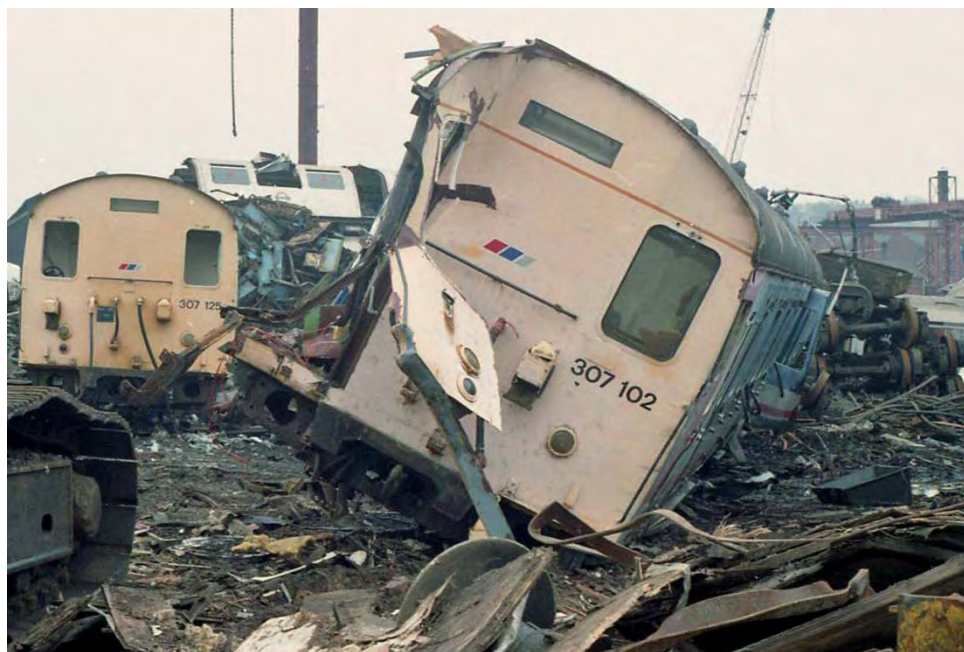
GONE BUT NOT FORGOTTEN

This is an occasional series devoted to showing withdrawn and ultimately scrapped rolling stock around the UK. If you have photos and any accompanying info, then please forward to the Editor.

CI.307 EMUs – DTSO 75002 (307102) & 75025 (307125) were scrapped at Booth Roe, Rotherham, now known as CF Booth on the 21st January 1998 as seen by Roger Thomas. Designated AM7, 32 x 4 car 1500V DC EMU sets were built by BR in 1956 for the London Liverpool Street to Southend Victoria line, numbered 01-32. Converted to 25kV in 1960/61 and reclassified CI.307 they were re-numbered in the range 307101-132. Following wholesale withdrawal from service, the last working out of Liverpool St being on the 30th June 1990, 5 sets 307105/111/120/121/130 worked out of Leeds on Doncaster services from 1991-93 prior to CI.321/9s becoming available with one set 307117 going to Edinburgh, though CI.305s were deemed more suitable.

Following a successful conversion of DTCs 75114 and 75102 at Derby to Propelling Control Vehicles (PCV) for RES mail services a total of 43 DTCs and DTSOs were so treated, these conversions were done at Hunslet Barclay, Kilmarnock. The original number range was 94300-42 but the two original prototypes, being no-standard, were re-numbered from 94300/01 to 95300/01 with their push-pull equipment isolated and are both still extant. 95300 stored at Carnforth and 95301 recently bought by Pete & Andrew Briddon at Darley Dale (see p.25 in December 2016 issue). Of the remaining 41 PCVs, only 21 still survive with 20 stored at various locations 94302-4/06/08/10/11/13/16/17/22/23/26/32/33/35-38/44 respectively previously numbered 75124/131/107/112/125/119/105/129/108/117/111/110/123/011/016/032/031/029/008/014. The other one 94320 (75120) is now preserved at the Mid Norfolk Railway. One car that wasn't converted 75023, which also survived storage at MoD Kineton, is now preserved at the Electric Railway Museum, Coventry. A further 15 cars were used in departmental service but all have now been scrapped along with the other 71 cars at various locations including Booth-Roe.

What is interesting about the two driving cars shown below is that their respective DTC partners were both converted to PCVs and still survive, 75102 (94301) from 307102 (Darley Dale) and 75125 (94308) from 307125 stored at Carnforth. Note the London Underground car between and behind the CI.307 cars.





above
preserved PCV 94320 (DTC
75120) before moving to
MNR, Norwich Station Yard
16th April 2008



left
stored PCV 94322 (DTC
75111) Carnforth
1st May 2015

stored PCV 94344 (DTSO
75014) Swansea carriage
sidings, 10th September 2009,
now stored at Carnforth
(all Trevor Roots)



RAIL TOUR PHOTO SPOT



4-6-2 46233 t&t 47854 on The Railway
Touring Co 'York Yuletide Express' 1Z45
Ealing Broadway - York pass
Wellingborough (10.04)
17th December 2016 (Colin Pottle)



top 47804 + Stanier Black 5s 4-6-0
44871 + 45407 on a private charter
from Carnforth to Fort William passing
Carstairs at 12.52. 17th December 2016
(Iain Gardiner)

right BoB 4-6-2 34052 'Lord Dowding'
passing through Kensington Olympia
at 10.03 on Steam Dreams
'Cathedrals Express'
London Victoria to Bristol,
10th December 2016 (Derek Everson)



DAYS OUT

Four Tramways by Ray Smith:

I had to go to Abergavenny in October 2016 for the unveiling of a plaque in memory of a lifelong friend and fellow railway enthusiast, Bryn Davies, who died in July. For me, this is a 640 mile round trip so I decided to break my journeys, visiting some tramways to see the new (for me) trams.



above illustrating the two different types, NET 214 'Dennis McCarthy' and 222 'Barbara White OBE' Nottingham station, (13.55) 10th October 2016

Monday 10th October 2016:

Outward, I went to Hucknall, park and ride, to go to Nottingham. The last time I did this line was when it was less than a week old. Then I went from Nottingham and on arrival at Hucknall the platform was full of people waiting to go to Nottingham. When the tram arrived only a few people got off! The locals could not understand why! I think they were also like me, wanting to do the line! I saw all but 2 of the original Incentro, 5-Section Trams numbers 201-215. Today I saw my last 2 but missed 5 of the new Citadis 5 section units. On this system a day pass was cheaper than two single journeys!

Tuesday 11th October 2016:

Today, the plaque was unveiled (see above right) and there was a good turnout of his friends and fellow railway enthusiasts. Many thanks to the staff at Newport station for arranging the fitting of the plaque. Donations received covered the cost of the plaque and the balance of over £150.00 went to the stations nominated charity.

Wednesday 12th October 2016:

Tonight I am booked in to a hotel outside Manchester. On route I wanted to stop off at Wolverhampton and ride the trams into Birmingham (see photo right of 20 at 12.59). A day pass at £5.00 was the best value. All of the services were worked by the new CAF URBOS 3 trams although one unidentified original Ansaldo unit was seen on Wednesbury depot.



After that I headed to Manchester spending time riding the system and watching the movements at Piccadilly Gardens.



above Metrolink 3028 departs Victoria at 18.11 on the trackbed originally used by the Manchester to Bury class 504s that were withdrawn in 1991 when the route was converted to Manchester Metrolink

right Metrolink 3030 + 3029 depart Old Trafford at 16.51



Thursday 13th October 2016:

After spending what seemed to be an age trying to get out of Manchester I set out to Blackpool. It must have been at least 20 years since I was last there. Rigby Road depot now has a security fence and closed gates around it. Last time there all I had to do was sign an indemnity form to look around. Still it was nice to see the old trams lined up. The 10 minute service was operated by Flexity 2 trams during the day and as it was illumination season, the heritage trams came out at dusk and fitted in between regular services.



left Blackpool Transport 009 Starr Gate (12.13) 13th October 2016

I wanted to have a short ride and followed the lines to Little Bispham where I had no problem parking. All I wanted to do was get a return to Fleetwood but this was not possible. Again, I had to buy a £5.00 day pass so I went to Fleetwood, back to Starr Gate, where the even more secure depot was, then back to Little Bispham.

This concluded a happy few days tram watching.

photos by Ray Smith

OUT & ABOUT

by James Holloway

*For clarity, steam locos are now shown in red. To be more helpful for those interested in where stock was exactly, can I ask all contributors who list trip sightings over long distances, to please add all locations when submitting to James. Please also ensure your sightings reach James a few days before the press deadline, see **SOCIETY NOTICE BOARD**...ed*

Michael Hayman:

3rd December:

Paddington: 43029/034/086/134/191, 66761

Acton: 43161, 66001/012/019/088/132

Southall:

44871/45407, 46233 **Duchess of Sutherland**

43015/063/086/156/163/186, 47760, 66621

14th December:

Shepherds Bush: 44871/45407, 47802

15th December:

London Victoria: 44871/45407, 57314

Three Bridges: 66725

29th December: Willesden:

66177, 67019

13th January:

King's Cross: 67016, 91119/24

Norwich:

37419/422, 66764, 68005/17/25, 90002/03/05

90006/10-13

Ipswich: 66567/606, 90047

Colchester: 70008

Marylebone: 68011/15

18th January:

Willesden: 87002

Wembley: 66113/148/418/559/623/951, 86101

Rugby: 57304, 70020

Manchester: 47830, 73962/964

25th January:

Paddington:

43004/069/126/127/134/138/142/147/154/164/174
43186

Westbourne Park: 66761

Acton: 66615/771

Maidenhead: 66603

Reading: 66556/570/749

Didcot: 66030/142/163/182

Rod Johnson:

29th November:

Stafford 07.45-18.30:

66017/024/059/089/093/122/154/164/512/519/522

66525/537/538/543/553/554/567/590/594/735/776

66954, 67012, 68004, 70004/006/008/015, 90035

90040/44/49, 220002/12/16/18-20/25/27/30-32

221101-04/06/08-11/13-17/21/25/27-29/31/37/39

221142, 350101/102/105/107/110/117/130/236

350238/240/247/254/255/260/266/368/376

390001/002/005/006/008/011/013/016/020/043

390045/046/049/103/104/107/112/114/115/119

390123-128/130-132/134-138/141/148/151/152

390155/157

6th December:

Leicester 09.00-19.30:

37350/800/905/906, 43044-046/049/050/052/054

43055/058/061/064/073/082/083, 56006/018/031

56032/037/038/060/065/069/077/081/104/106/301

66005/065/077/084/093/116/126/136/149/158/221

66546/603/727/743/752/764/771, 67018/24, 70004

153302/21/57/83, 156403/406/408, 158866

170101-102/108/111/112/117/520/636-639

222002-006/008-010/013-016/018/020/022/023

222101/102

20th December:

Burton-upon-Trent 08.00-15.00:

20096/107/314/905, 43207/387, 56105, 60059/063

66009/017/035/068/091/105/130/506/596/603/954

150002, 170102/103/105/109/110/518/519/523

170636/637, 220003/06-08/11/14/15/17/21/26/28

220033/34, 221122/24/26/27/34/37-40

Nigel Matthews:

29th November:

Leamington Spa 10.50-17.00:

37116/421, 66024/025/044/089/105/154/162/420

66533/543/593/954, 68014, 70008/807, 165003

165015, 168001-005/106/108-111/217/322/324

220001/02/06/14/19/24/25/27-29/31/33, 221121/23

221125/28/39

15th December:

Didcot Parkway 10.30-15.50:

43002/004/005/015/017/020-022/024-029/033/036

43040/041/056/063/070/079/086-088/091/092/094

43125/127/128/130/133/136/139-141/143/145/146

43148-150/153/154/156/158/161/163-165/169/171

43172/177/179/180/182/183/186-188/191/195/197

43198, 60066, 66053/079/086/096/104/105/109

66147/416/531/534/546/558/587/591/592/772

70019/020, 165101/104/106/108/109/111/116/117

165119/123/129/130/132/135/137, 166201-03/06

166207/14-16, 180103/04/06, 220002/06/07/10/16

220017/20/27/28/30/33, 221122/32/35

Roy Hitchen:

13th December:

Crewe Station 11.51-12.16/13.04-15.34:

37668/706. 56078/105, 57007/307, 66303/552

90037, 150231, 153321/79/83, 175011/108/111

175112/115, 221102/07-11/14/15, 323235

350101/105/107/108/122/123/127/234/235/248

350259/260, 390002/005/010/013/016/039/040

390046/047/107/112/117/126/127/134/135/156

390157

Crewe Gresty Bridge 12.35:

37218, 57303/305, 66303, 68008

Mike Rumens:**2nd November:****Nuneaton 13.56-14.16:**

66182, 70806, 153356, 221118, 390121/128/154
DR73120

5th November:**Nuneaton 15.00-15.50:**

66003/004/083/167/187/207/593/594, 153356
170105/112/397/520, 390010/046/153

7th November:**Nuneaton 13.50-14.45:**

66565/601/840, 70806, 153356, 170520, 221117
390005/103/117/131/148/152

8th November:**Nuneaton 14.05-14.42:**

66175/566/849, 70807, 90028/36, 153375, 170103
170112, 350112, 390002/006/126, DR80201/08

9th November:**Nuneaton 14.05-14.45:**

66125/548/591, 153375, 170105, 221102/06
350239, 390008/044/047/103/114/115/137
DR80201

10th November:**Nuneaton 14.10-14.30:** 66125, 70804, DR80201**15th November:****Nuneaton 14.03-14.50:**

66061/082/184/555/587/773, 70805, 90018/37
92023, 153366, 221101, 350128/371, 390008/040
390137/153/156

16th November:**Nuneaton 13.40-14.50:**

66086/155/184/569/594, 70805, 153364, 170105
170111/518, 221103, 350119/376, 390002/107
390112/117/155

17th November:**Nuneaton 14.05-14.25:**

66555/571, 70810, 90018/37, 153364

19th November:

Birmingham Int: 323221, 350109

Birmingham New Street:

158824/825, 170504/505/514, 350115/236
390137

Soho: 08805, 350263

Bescot: 66057/081/185

Walsall: 66007/082/102, 170505/507, 323202

21st November:**Nuneaton 14.10-14.50:**

66168/531/542, 70806, 153356, 350113, 387305
387306, 390137

22nd November:**Nuneaton 13.36-14.50:**

66051/080/538/556, 70802, 90028/37, 153366
170103/113/519, 221104, 350376, 390016/045
390104/112/125/154, DR73118/77905

23rd November:**Nuneaton 14.05-14.25:**

56113, 66198, 70804, 153356, 170106, 221106
390002/119/125

24th November:**Nuneaton 14.05-14.40:**

66021/155/507/593, 70804, 153366, 350101
390119/137, DR73948

28th November:**Nuneaton 13.55-14.40:**

66135/419, 70804, 90035/40, 153364, 170103/521
221102, 390001/005/010/045/112/148

29th November:**Nuneaton 13.25-14.25:**

66114/538/567/568, 70807, 90035/40, 153356
170520/523, 221102/12, 350110/249

30th November:**Nuneaton 14.10-14.45:**

66031/557, 70809, 90019/39, 153365, 170112/116
350120

1st December:

Nuneaton: 66589, 350240

Tamworth: 350369

Lichfield: 66518

Stafford: 221106, 350259

Crewe: 09204, 57307, 150240, 175010, 323235

Warrington:

37609, 47760, 66031/105/135/150/512, 67014
68018, 70004, 90035/40, 150281, 175002/110/111
170115, 221102/13/42, 319361/370/374, 390005
390006/009/011/040/050/124/128/129/137/148
390157, DR98901/07/57/59

2nd December:**Nuneaton 14.40-15.00:**

221104, 350125, 387305/306, 390006/045/104/155

5th December:**Nuneaton 14.07-15.00:**

66024/532/536/537, 90024/29, 153365, 170103
170112/113/116, 221106/42, 350115/129, 387138
387139, 390045/104/112/114/119/122/124/127
DR80208

6th December:**Nuneaton 13.50-14.25:**

66059/136, 70806, 90024/29, 153371, 170113
350377, 390016/045/047/117

12th December:**Nuneaton 13.55-14.40:**

66053/147, 70810, 90024/29, 153356, 350106/370
DR73923

13th December:**Nuneaton 13.25-14.40**

37668/709, 66084/089/537/565/569, 70806, 90024
90029, 153334, 170639, 350108/122

14th December:**Nuneaton 13.45-14.50:**

153356, 170101/117, 221112, 230001, 350101
350113

15th December:**Nuneaton 13.55-14.40:** 66015/151/599, 70806,

350123

19th December:**Nuneaton 14.08-14.30:**

66011, 70810, 153356, 170112

20th December:**Nuneaton 13.50-14.45:**

66109/560, 70801, 90019/24, 170116, 350120/243

3rd January:**Nuneaton 13.58-14.55:**

66206/556/569, 70804, 90028/40/45/49, 153356
170107/111/522/523, 221109/11/15, 350118/125

387140/141, 390040/050/112/124/128/134/141

5th January:

Nuneaton 14.00-14.45:

66006/507/570, 153366, 170102/108, 221113
350121, 387140/141, 390005/011/107/124/131
DR73109/909/920

6th January:

Nuneaton 13.41-14.45:

66037/512/514/525/593, 90024/29, 153364
170104/106/113, 221102, 350119/263, 390005
390039/121/138/141/156, DR73931

17th January:

Nuneaton 13.42-15.00:

66194/198/503/524/588/775, 70015/807, 90024/29
92023/33, 153364, 170101/110/114/398, 221115
350105/109/119, 387142/143, 390002/047/117
390118/127/136/138, DR73947

18th January:

Nuneaton 13.52-14.40:

66183/560, 70807, 153334, 170101/105, 221105
350371, 390001/049/050/126, DR73947

Ian McAlpine:

25th November:

Peterborough: 66109/768, 91112, DVT 82230

Grantham: DR73115

Doncaster: 08724, 67015, 97304, DR74002/75302

Leeds: 43207/303, 150269, 185115

Manchester Victoria:

150149/270, 319366, trams 3040/064

Edge Hill: DR73914

Liverpool Lime Street: 350369, 508123

26th November:

Little Sutton: 508104

Hooton: 507002, 508112/123

Chester: 56087, 150259/260, 158823/838

Ruabon: 158829/836

27th November:

Hooton: 507013

Liverpool Lime Street: 185112

York: 91108, DVT 82207

2nd December:

Peterborough: 70016, 91115, DVT 82231

Biggleswade: 66002

King's Cross:

67030, 90034, 91129, 321404/406, DVT 82219

St Pancras: 374011

3rd December:

Whittlesea: 156419

March: 66017

Ely: 66768, 170206/273, DR73925/80214

Cambridge North: 66623

Cambridge:

317337/342/502/509/510/649/650/657/660/665
365506/32

9th December:

Peterborough:

43295/311, 66121/130/176/194/206/701

91118, DVT 82207, DR75302

Doncaster: 67030

York: 37716, 68021

Darlington: 66526

10th December:

Darlington: 91104, DVT 82210

York: 220022, DR73110

12th December:

Darlington: 91113, DVT 82230

14th December:

Whittlesea: 66537/585, 170272

March: 66093, DR73118

Ely: 57003/310, 66084/531

Bury St Edmunds: 66618

Stowmarket: 66430

Ipswich:

66529/533/556/572/760, 70016, 86604/613

156416, 360102

Wakefield: 66719

Beccles: 170273

Lowestoft: 153309, 156418

Norwich: 37405/419, 57003/310, 66172, 68002/25

Reedham: DR73925

Reedham Swing Bridge: 68005

15th December:

Norwich:

37405/419, 68002/05/25, 90006, 170208

DVT 82107

Stowmarket: 66430

Ipswich:

66568/571, 70008, 90042, 156418, 170270

321310/338/440, 360103

Beccles: 156416

Lowestoft: 153335

Reedham Swing Bridge: 156417

Ely: 66755, 170271/523, DR73925

Cambridge: 170206

17th December:

Whittlesea: 66548, 170273

Ely: 66535/767, 170271, DR73919/925

Stowmarket:

57003, 66424/431

Ipswich:

66502/531/546, 70011/018/020, 156419

321316/357

Beccles: 170201

Lowestoft: 156409

Norwich: 170202

Trowse: 66084

Cambridge: 317508/649/671, 365501/05, 379010

21st December:

Whittlesea: 66703, 170273

Ely: 57314, 66120, 170202/270

Cambridge:

170207, 317503/657/663/670, 379007/30

DR73919/925

23rd December:

Whittlesea: 158847, 170107/273

Peterborough: 66778/779, 91101, DVT 82220

Doncaster: 66517

York: 20305, 66055/504, 68024, 185138

Neville Hill: 08525

Manchester Piccadilly: 390151

Manchester Oxford Road: 150116

Deansgate: Trams 3064/099

Cornbrook: Trams 3013/024/109

Trafford Park: 66059
Liverpool South Parkway: 350241
Edge Hill: 390107
Liverpool Lime Street: 150110, 507001/021, 508115
Port Sunlight: 507002
27th December:
Little Sutton: 507019
Hooton: 507021, 508108
Chester: 150208, 507018
29th December:
Hooton: 507032, 508108/130
Liverpool Lime Street: 185135
Leeds: 91106, DR82213
30th December:
Whittlesea: 158866, 170272/639
Ely: 170203
Cambridge: 170202
Ely: 156409, 170273
31st December:
Whittlesea: 158810, 170107/270
Peterborough:
66702/703/706/724/727/744/747/757/765, 91107
170270, DVT 82214, DR74002
Grantham: DR73111/77903
Retford: DR97505/605/805
Doncaster: 66170, DR77001
York: 20305, 43251/309, 66304, 150206
6th January:
Peterborough:
26007, 43312/319, 66091/168/194/304, 68021
90036
Newark Northgate: DR73908
Doncaster: 66132/170/773, DR77801
York: 66144
7th January:
Darlington: 91112, DVT 82226
Durham: DR75301
Tyne Yard: 67021
Newcastle: 67024, 142078, 156444
Hartlepool: 142068
Thornaby: 142087
8th January:
Darlington: 43309/311, 156443, 185150, DR75301
York: 68021, 150205, 158103, 222004
Doncaster: 66526/533/703/704/728, DR75302
Peterborough: 66705
13th January:
Whittlesea: 170272
Peterborough: 66119, 91110, DVT 82230
Doncaster:
08669, 37175, 66068/192/531/556, DR73114
Leeds: 150220, 185104/20/46
Manchester Victoria: 150203, 319374
14th January:
Little Sutton: 508111
Hooton: 507003/012, 508141
Chester: 508127
15th January:
Liverpool Lime Street: 185133, 350263
Cornbrook: Tram 3101
Manchester Oxford Road: 150113/141

Manchester Piccadilly: 390050/122
York: 66106, 91127, 150203, DVT 82207
20th January:
Peterborough: 70004, 158862, 180110
Ely: 66084
Norwich:
37405/419, 68005/17, 90002, DVT 82132
Ipswich: 66763, 70004, 156412
Westerfield: 66589
Saxmundham: 170272
Beccles: 156409
Lowestoft: 153309/35
21st January:
Norwich: 90001, DVT 82133
Ipswich:
66503/512/528/531/545/556/560, 170272
321345/433, 360119
Cambridge:
66035/772, 170397, 317506/649/652/657/666/671
317672, 365515/17, 387111/114, DR75408
Ely: 66091/765, 170207/273, DR73925

Dennis Dey:
11th November:
Hassocks: 387101/122, 700114
Three Bridges: 700002/008/021/023/027/112
Crawley Yard: 66152
Westbourne Park: 66763
North Pole: 387130/133/136
Old Oak Common: 08483
Acton Yard: 59206, 66128/132
Southall:
46233 Duchess of Sutherland, 08780, 66019/078
Paddington: 387137
East Croydon 15.25-16.30:
387101/115/121/125/127/203/207/213/217/223
387227, 700003/104/111
12th November:
Hassocks: 387108/118/207/213/217
Preston Park: 700014/113
Brighton: 387205/215/226
18th November:
Three Bridges: 700008/018/019/021/030
Gatwick: 700114
East Croydon:
387201/204/205/208/213-215/218/221/224-226
700101/105/112/113
Crawley Yard: 66019
Wivelsfield: 700109
25th November:
Three Bridges: 700003/006/008/103/114
Gatwick: 387205/214/226
Purley: 66197
East Croydon:
171201/401, 387101/113/202/203/205/206/209
387210/214/216/218-220/222/223/226/227
700002/104-106/109/113/115
East Ham Depot: 357316
Barking: 357326/327
Fenchurch Street: 357315/324/325
Crawley Yard: 66012
2nd December:

Burgess Hill: 700101
Haywards Heath: 387208/216
Three Bridges: 700010/107
Crawley Yard: 66075/207
Gatwick: 387212/226
Purley: 700109
London Victoria: 387201/203/207/213/214/222
4th December:
Hassocks: 377624/708, 700115
Three Bridges:
66520, 442417, 700003/09/010/016/023/104/107
700112/114
Westbourne Park: 66771
North Pole: 387130-137
Acton Yard: 59201, 66003/207
Wivelsfield: 700002
9th December:
Hassocks: 700111/115
Three Bridges:
700004/010/015/019/030/103/106/108
Crawley Yard: 66012
East Croydon:
171421, 387201/205/209/211/212/214/217/222
700003/014/103/104/112/115
Purley: 59206
Gatwick: 700105
Haywards Heath: 387105/122, 700112
17th December:
Hassocks:
377601/603/606/617, 387204/217, 700002/114
Three Bridges:
377612/618/625, 387201/215, 442408, 700002
700005-008/101/107
Haywards Heath: 387124
24th December:
Hassocks: 377606/612, 700113
Burgess Hill: 700007
Three Bridges:
377615/626, 700003-006/012/015/021/023/103
700104/111
Wivelsfield: 700007

James Holloway:

21st December:
Stratford Road [A34], Solihull:
DMU carriage 56338 on low loader for Tyseley
17th January:
Nuneaton 15.00: 387142/143 on test
24th January:
Nuneaton 14.20-15.00:
66590, 70801, 387143/144 on test
47812+319214/453 Cricklewood-Long Marston

Spencer Billingham:

4th January:
Bescot:
08623/703, 66016/057/109/140/177/182/183/230
66776, 70802, 153334/56, 170501/509, 323207
11th January:
Birmingham New Street 09.15-09.40:
323202, 350124/234, 390128/130/151
Rugby 11.27: 57304

Bletchley 11.52: 350105/106/119/127
Willensden 12.13:
66056/118/545, DR73923/930
Liverpool Street 12.45-13.00:
90007, 315835/837/848/850/851, 317508
12th January:
Colchester 17.00-19.10:
66719, 90001-003/005/010-012/014, 321317/320
321322/323/333/356/358/363/364/421/423/424
321426, 360107/114/115/117/121
Euston 21.45-22.00: 90046, 350109/231, 390020

Geoff Hope:

30th November:
Leeds 09.25-13.20:
43274/301/314/378, 66192/724, 91108/13/15/22
91127/29/32, 142011/15/36/63/71/87/94, 144002
144003/07/08/14/16/18/21-23, 150103/114/148
150204/225/268-272/276, 153307/15/17/78
155342/43, 158752-755/757/759/784/787/790/791
158795/815/816/843/848/851/855/861/872/901
158904/907/909, 185102/03/06/08/09/11/12/14
185118-21/23-26/28/29/32/34/37-39/41/42/45-48
185151, 220004/05/10/16, 221134/35/38, 321901
321903, 322481-83, 333001/02/04/06/08/10-16
DVT's 82201/07/11/15/18/19/25
7th December:
Doncaster 09.35-15.40:
43047/059/206/208/251/257/272/295/296/299/300
43305/308-311/314/315/317/319/367/423/465/467
43480, 60091, 66004/143/144/168/170/569/587
66592/712/717/732/738/750/776, 67005/24, 90034
91103/08-15/18-22/24/26/27/29-32, 142024/28/67
142070/78, 144001-03/07/08/13, 150002, 153357
153384, 158790/791/793/794/815/859/861/907
180101/05/09/10/13, 185101/10/13/20/35/38/49
220005/07/08/19/20/30, 221125/41
DVT's 82200-02/04/05/07/09/11-13/16-20/22/25-30
10th December:
Leeds 09.15-13.30:
43207/239/290/321/366/378, 66729, 91109/12/18
91119, 142016/20/28/50/67/68/93, 144005/11-13
144015/17/22/23, 150133/145/148/203/215/225
150271/272/276, 153315/17/24/30/52/78, 155341
155342/44/45/47, 158753/754/757-759/784
158791-793/795/797/817/845/849/851/859/860
158901/904/905/908/909, 185101-04/06-13/17-19
185122/23/25/29/33/36-38/42/44/46/49/51, 220016
221122/26/37, 321901, 322484, 333001-08/12-16
DVT's 82209/26/28/29
Neville Hill:
43046/055, 333009
14th December:
Leicester 09.55-16.30:
37116, D6836, 43043-045/049/050/052/054/055
43073/075/082/083, 47805, 56098, 66006/019/031
66177/181/531/591/607/727/767, 68022, 156401
156498, 158806/865, 170101/103/105/109/111
170117/397/519/636/637, 222001-005/010
222012-015/017/019-023/103/104, DR73804
DR75404/77801, cs 975875/977087
18th January:

Leeds 08.55-13.50:

43251/313/321/366, 60019, 66715, 91103/10/11
91113/15/16/27/30, 142016/20/25/39/43/89/95
144004/05/07-09/15/17-21/23, 150103/111/112
150132/135/203/218/220/224/228/270/274
153317/28/60, 155342/43/45, 156480, 158753/755
158758/759/787/790/793/794/797/815/817/843
158844/848/850/851/855/859/860/902-906/910
185101-08/10-12/14/18/20/21/24/26-28/31/33
185135-38/41/42/44/45/47/49/51, 220003/09/22/28
220034, 221123-25/27/39, 321901/902, 322482/83
322485, 333001/02/04-08/10-16, DVT's 82207/08
82210/12/16/24/27/30

Manchester Piccadilly 14.50-17.05:

47830, 66540/587, 67008, 142004/05/11/12/32
142035-38/41/50/57/62, 150113/114/116/117/119
150137/138/140/145/201/214/226/259/272
156406/410/452/461/464/468/471/482/486/488
156491, 175005/113-115, 158788/799/806/812
158856/863/865, 185101/05/06/12/14/16/20-24/36
185139/42/43/47/49-51, 220017/20/21/25, 221140
319374/377/380, 323223-29/31-37/39, 350401/402
350406, 390008/016/043/046/107/125/128/138
DVT 82308, cs 12177/177/183/185

PRSERVATION GALA PHOTO SPOT



D5310 + 4-6-0 7822 'Foxcote Manor'
depart Berwyn on the 12.39 service to Carrog,
Llangollen Railway Winter Warmer Gala,
30th December 2016 (Martin Evans)

INFRASTRUCTURE NEWS

GWML Electrification: With costs escalating to £5.6 billion it is now officially a complete fiasco with electrification now not likely to reach central Bristol until 2024. The promise is that London to Cardiff via Bristol Parkway will be completed by December 2018, 18 months late, as will Reading to Newbury. The Crossrail route to Maidenhead will be finished by June 2017. Beyond these phases all else is subject to delay. The delays have had serious knock on effects on rolling stock procurement and cascades adding to rising costs. The bi-mode IEPs will also not be able to maintain HST timings !!

Doncaster Station Platform 0: The new platform 0 opened on the 12th December 2016 and can be seen below in operation with 144002 on the 17th January 2017 (Andrew Turnidge).



Edinburgh Gateway: Adjacent to the Gyle Centre to the west of the city, this new station opened on the 9th December 2016 providing an tram-train interchange with the Edinburgh Tram network.

London – Oxford: The final part of this new link operated by Chiltern Railways was opened on the 12th December 2016 allowing Marylebone trains, which were terminating at Oxford Parkway, to now run through to the main Oxford station. To commemorate the occasion, 68010 was named 'Oxford Flyer' at the station.

Hornsey Depot: Taking four years major modernisation of Hornsey Depot has been completed to allow servicing of the next generation of EMUs operating out of King's Cross. The upgrade has incorporated the derelict and overgrown Coronation Sidings, between the Depot and Bounds Green Depot, into the new facilities.

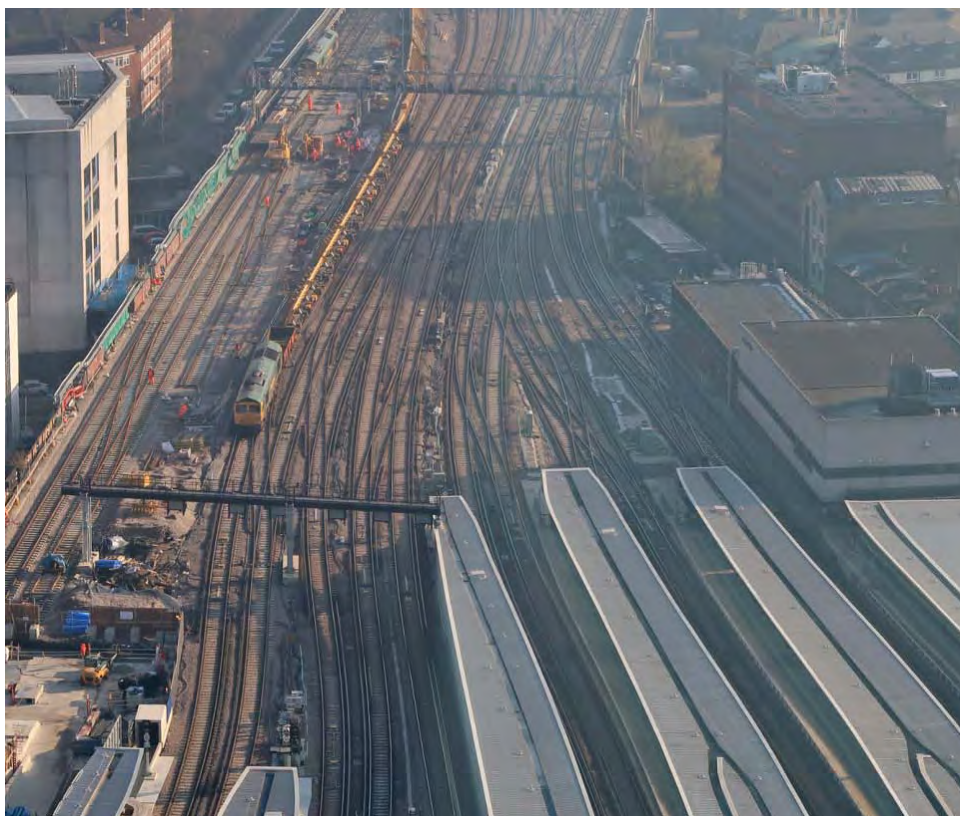
Robertsbridge: The 6th December 2016 saw the official opening of new sidings which have been installed at Robertsbridge for Network Rail, officially creating the mainline connection with the preserved Rother Valley Railway. This will allow extra capacity for NR engineering trains and speed up delivery of materials to reinstate the missing link between the RVR and the KES.

Millerhill Depot: The Depot continues to find use with ScotRail installing new servicing and stabling facilities for its fleet.

Elgin Footbridge: With the old footbridge removed, the new one with lifts is seen on the 22nd October 2016.



A VIEW FROM ABOVE



looking south over London Bridge station showing the ongoing refurbishment work, from the 32nd floor of The Shard, 22nd January 2017 (Brian Derricote)...anyone know the numbers of the FL Cl.66s ?

RHTT GALLERY

More images from the final throes of RHTT operation in December 2016.



above & left
56078 t&t 56087 +
56105 RHTT
Crewe (15.44)
13th December 2016
(Roy Hitchin)

below 66160 t&t 66238
on 3J13 RHTT,
Westbury (09.57)
3rd December 2016
(Andrew Buckley)





above end of the season with
68002 t&t 66431 returning several
RHTT FEA sets as 6Z60 10.20
Stowmarket - York Thrall
passing Ely at 11.19,
21st December 2016
(Keith Partlow)



right
MPV DR 98926 + 98976 on
RHTT duty passing Camberley at
10.36, 8th December 2016
(Roy Hitchin)



above 66194 Doncaster
17th December 2016
(Andrew Turnidge)

left
66007 Bescot Yard
11th December 2016
(Paul Clifton)

NARROW GAUGE MATTERS

Penrhyn Quarry Railway, North Wales by Roger Thomas:

The PQR is a demonstration railway built on an original section, the former workshops and foundry, of the Penrhyn Quarry Railway at Felin Fawr, Bethesda. It gives a glimpse into the history of slate quarrying and the transport system since its inception in 1801.



above 'Marchlyn' in the foreground, 'Winifred' on the right and 'Stanhope' in the distance

On the 17-18th September 2016 PQR marked their 140th year since the relaying of the Penrhyn mainline between Felin Fawr and Dinas incline. They had three original steam locos returning to the

railway for the first time in 65 years, all operating with the Quarryman's coaches. There was a vintage bus giving free rides to Porth Penrhyn and Dinorwic. Also on display was a vintage steam traction engine a 16mm model railway and there were various trade stands. I attended on the 17th with my local railway society travelling by rail and bus and at £6 it was a good couple of hours out.



Loco List: Resident:

Ruston 26, Simplex 1

Visitors: 0-4-0ST 'Winifred' [364] Penrhyn port class Hunslet (courtesy of Bala Lake Railway) (see above)

0-4-2T 'Stanhope' [2395] Kerr Stuart (courtesy of Moseley Railway Trust, Apedale) (see right),



0-4-0 'Marchlyn' [2067] Avonside (courtesy of Statfold Barn Museum) (see left)

Interestingly both 'Winifred' and 'Marchlyn' were exported to the USA before being repatriated in recent years.

photos by Roger Thomas

PRESERVATION NEWS - I

Train Story, Isle of Wight Railway by Colin Pottle:

Whilst attending the 'Shunter Shuffle' Gala on the Isle of Wight (see November 2016 issue), I also paid a visit to 'Train Story' based at Havenstreet to the west of the station. This is a large 75 x 25m 4 track shed houses various items of rolling stock, locos, coaches and wagons either displayed, under overhaul or stored awaiting their turn for overhaul.



*below left 'Freshwater' & 'Ajax'
below right 'Waggoner'*



Train Story opened to the public in April 2014 and not only finally provides cover for many historic items of stock the access walkway takes visitors through the carriage & wagon workshop and past the running shed and yard. The path also allows more vantage points to view and photograph the line from the south.



Prior to the shed being built there was no access on the south of the line at the station and the stock was all out in the open as can be seen from my last visit in 2008. Viewing and photographing of stock either around the existing sheds and yard or in the sidings was extremely limited before, mainly from the train (as seen below), so a re-visit is on my to do list...only the other end of the country, ed!!



*above looking back from the train at the station running shed and carriage & wagon workshop (C&WW) with the new footpath to Train Story on the extreme right
below looking northwest from the station with the original stock sidings off to the west and to where the Train Story shed now sits on land to the south of the sidings with the footpath alongside the C&WW access track, 8th April 2008 (Trevor Roots)*





YARMOUTH

Through a set of doors, a long platform stretched to the far end of the shed. Here I found two locos, Stroudley Terrier A1X 0-6-0T 8 'Freshwater' and 0-6-0T 38 'Ajax' (see first page of report). Wagons lined the other side of the platform. At the far end of the shed, entering through some more doors on the left, was another viewing area without platforms, housing assorted wagons and a crane along with more locos, Stroudley Terriers

A1X 0-6-0T 11 and 2 'Yarmouth' (see above). There were also works in progress and at the far end I found 0-6-0PT 3792 'Waggoner' (see first page of report). The last set of doors brought you back to where you started. As mentioned in my Gala report there are a large number of coach bodies which found use holiday home / garden sheds alongside Train Story to the south all awaiting hopefully restoration.

The long stock siding seen in my photos, now alongside the north of the shed or the access tracks into Train Story from the west are not visible from the shed but as with Colin on his visit, the brake van rides went past the shed enabling the photo opposite of open mineral wagon 27766 and the coach bodies beyond. Other wagons were to be seen, ed.



LIGHT RAIL & METRO NEWS

Midland Metro: Urbo3 tram 18 left the system on 18th January being returned to Spain for the fitting of batteries. Batteries are required because some future extensions will have no overhead wires in sensitive cultural areas. It is expected to return in July 2017. The rest of the fleet being retro fitted in the UK.

The new tram stop adjacent Snow Hill station was renamed St Chads from the 1st January 2017. Hopefully by the end of January direct access to Snow Hill station will be by lift / stairs via the Livery Street entrance via Lionel Street. Level access is via the Bull Street tram stop, 150 metres from the main Snow Hill entrance.

Metrolink by Geoff Hope: During the early hours of the 1st December trams 3004/3021 were used for the start of tram testing on the Second City Crossing (SCC) between Exchange Square and St.Peter's Square with the possibility of services running in January/February 2017.

On the 2nd December MPact Thales (MPT) were awarded the design and construction of the Trafford Park line who have already delivered extensions to Media City/Airport/Ashton/East Didsbury/Rochdale lines are close to finishing the SCC. Manchester Airport is due for a £1 billion makeover which will include doubling the size of Terminal 2 with a link to Terminal 3, Terminal 1 being phased out with plans for Metrolink to run a line to the complex in addition to the original terminal at the railway station.

It is expected 36 million passengers will be carried during 2016 compared with 33.5 million in 2015 and 30.4 million in 2014.

During the first quarter of 2016, cars on tracks accounted for 17 incidents. Spending £20k on additional signage and bollards has helped but incidents still occur. During December, five incidents were reported involving cars blocking the tracks on the Airport line, the last two incidents occurred within 2 hours of each other on the 28th. On the 17th a member of the public was hit by a tram at Roundthorn on the Airport line with reports suggesting he was sitting on the edge of the platform at 05.00, he survived with non life threatening injuries. It was revealed during September and October 2016 there were four incidents a day on the Metrolink network with the Rochdale line recording one every day.

The plaque to mark the official opening of Metrolink twenty five years ago unveiled by The Queen has been restored and fitted at the completed St.Peter's Square stop.

2017 was not a good start for Metrolink as late on the 4th January (22.00) two trams had windows smashed at Wythenshawe on the Airport line and were taken out of service. On the 5th (09.15) a car finished up on the tracks between Baguley and Roundthorn on the Airport line, at 17.15 another two trams were attacked at East Didsbury resulting in more smashed windows, again both trams were taken out of service. No injuries were reported in the incidents. A passenger travelling on the Airport line was taken ill causing severe delays at 17.45 then at 18.00 minor delays on the Altrincham line were incurred after a tram failed at Trafford Bar, not one of the better days for Metrolink.

With effect from the 8th January general traffic was disrupted including 14 bus services with some bus stops to be removed permanently to make way for the next stage for preparing the SCC between St.Peter's Square to Exchange Square via Princess St/Cross St. Using trams 3004 & 3059 in the early hours of the 16th January test runs on the SCC restarted between Victoria and Deansgate Castlefield.

On the 18th it was announced a Keolis/Amey partnership will run the network with effect from July 2017 for up to ten years. Apart from creating 300 jobs, 100 immediately they will be focusing on improving frequency of services, reliability, customer services, additional ticket inspectors and increasing security on evenings and weekends. The partnership operates Docklands Light Railway and Keolis is the operator of Nottingham Express Transit tram network.

On the 22nd nine trams were running on the SCC for further testing and commissioning purposes. A walk along the route on the 23rd would suggest opening of the line is not far away. A slight change in services when this route is open as the original plan for Altrincham service to terminate at Piccadilly will be extended to the Etihad Campus, the Media City service will terminate at Piccadilly not the Etihad Campus. Drop in services for the public to find out more about the extension into Trafford Park were held during w/c 9th January. Enabling and Utility works have commenced the same week on the extension. Manchester Smart Card due to be rolled out in the summer will allow passengers to use a single card to travel by bus and tram in Greater Manchester.

3022 has lost its advert livery for Michael Kors. 3091 has lost its Team/Paralympic GB livery. 3095 has received an advertising livery for Raytheon Software Engineers who are currently recruiting. 3116, out of service since August due to rough riding, entered Queen's Road workshops for attention.

Observations for Wednesday 11th January: (94 trams in service)

Cornbrook 08.15-10.05:

Altrincham - Bury: 3001+3042, 3008+3020, 3009+3018, 3011+3046, 3013+3060, 3021+3049, 3022+3044, 3029+3036, 3039+3048, 3050+3054

Altrincham - Piccadilly: 3004/3025/3026/3038/3053/3059

East Didsbury - Shaw: 3006, 3028+3035,3034+3051, 3064+3099, 3070+3074, 3072+3104, 3087, 3095+3097, 3101+3108, 3105+3113, 3112+3117, 3119+3120

East Didsbury – Deansgate / Castlefield: 3027/3055/3065/3081

Eccles - Ashton: 3067/3071/3080/3091-3093/3096/3098/3100/3109/3114/3118

Media City - Piccadilly: 3061/3076/3079/3089/3110

Cornbrook - Airport: 3063/3069/3084/3085/3102/3103/3106/3111

Old Trafford Depot 10.10-10.30: 1020/1023:2001:3019/3033/3037/3056/3062/3068/3077/3082/3086

Queens Road Depot 10.55-11.15: 3012/3017/3032/3040/3045/3047/3057/3083

Victoria 11.20-13.10:

Bury - Etihad Campus: 3002,3010,3014,3016,3023,3041,3043,3058

Rochdale - Exchange Square: 3007,3030,3031,3066,3073,3075,3088,3090,3094

Trams not seen: 3003/3005/3015/3024/3052/3078/3107/3115/3116

Nottingham Express Transit: A visit on Saturday 21st January to Nottingham revealed the following trams: 201/203-216/218/220-223/225/226/228-237 in service, 202/217/219 on depot with 224/227 in depot not seen.

Glasgow Airport Link: A new tram-train link from Glasgow Central to the airport has been approved using the existing tracks to Paisley then a new light rail spur into the airport. Not due to start until 2022 it will be operating by 2025.

UNDERGROUND NEWS

Glasgow Underground: To commemorate the 120th anniversary of Glasgow Underground which opened on the 14th December 1896, a train has been re-liveried with one car in original livery and another in a possible future livery.

London Underground: The final 'S' Stock set with driving cars 21381/82 was delivered to LUL on 10th November 2016

PRESERVATION GALAS

Swanage Winter Warm Up, Tuesday 27th Dec 2016 by Andrew Buckley:

The Swanage Winter Warm Up took place on the Christmas Bank Holiday Tuesday and featured the following resident locos: D6515, 33111, Drummond M7 0-4-4T 30053 and Maunsell U 2-6-0 31806. Reputedly this would be the last run for the M7 before its boiler ticket expired.



30053 passing the NT car park on the approach to Corfe Castle with Norden - Harmans Cross freight

The timetable was as encouragingly full as a gala day with the only alteration being that the third passenger working was instead a demonstration freight run, effectively producing a freight move every hour and a quarter in both up and down directions. Indeed, the first traffic of the day was the freight positioning move from Harman's Cross where the wagons had been stabled, down to Swanage with 33111 at the helm.



In common with the weather of the last few weeks the morning started off both cold and extremely frosty. Waiting for the 10.10 arrival at Harman's Cross the hoar frost was still very much in evidence and it was deep enough to look like white iron filings on a magnet. It was also very still which allowed for the very photogenic effect of steam propelled workings having a 'scarf of steam' above the train. It wasn't however the brightest of days.

left 33111 + D6515 heading to Norden, Harmans Cross

In common with other gala days on the Swanage Railway I decided to move up and down the line for the shots I wanted to take and favourite locations were revisited including the bridges on Corfe Common, Harman's Cross station and environs, The viaduct area above the National Trust car park at Corfe and Swanage station and, of course, the buffet!

The day looked to be well supported with all passenger services from mid-morning onwards well patronised and there was a smattering of photographers lineside to record the action as it happened. For me it was a great day out local to where I live and the first time in some months when my camera had been pointed at the railway.

photos by Andrew Buckley

Gloucestershire Warwickshire Rly Christmas Cracker Mixed Traction Gala, 30th Dec / 1st Jan 2016 by Andrew Buckley:

In an Inter Christmas - New Year week that had started for me with the Swanage Winter Warmer, the Friday saw a visit to the Cotswolds and the Gloucestershire Warwickshire Steam Railway who were holding a two day mixed traction event. The day of my visit, Friday 30th saw diesel locomotives D8137, 37215 and 47376 'Freightliner 1995' on roster. Steam locomotives in operation were Churchward 2-8-0 2807 and Collett Manor 4-6-0 7820 'Dinmore Manor'.



I arrived at Cheltenham Racecourse station in good time for the first departure of the day with the Manor in charge which had arrived tucked in behind 37215 and boiler first in a double headed combination on the 10.00 from Toddington. Curiously the Manor ran round (see above at 10.30) and then was attached to the stock forming the 10.50 departure from Cheltenham Racecourse station running tender first and the 37 was detached. The Manor would remain tender first all day. Regardless I joined this service and headed off to Toddington where I would stay for the duration.



At Toddington itself I headed to the observation area behind the diesel depot where a selection of locomotives were on display. The clear star, judging by its position closest to the viewing area, was 45149 (see left). Also on display outside was 2001 (20035), which is in the process of being cannibalised to support

D8137. Close by were D5343 which is currently undergoing repairs and adjacent to it Yorkshire Engine Company D372 'Des' the yard shunter at the depot. Also in evidence was E6036. In the depot and only partially visible were residents 24081 and 47105.



above
D8137 Toddington at 15.00

right
53160 + 59510 + 51369
departing Toddington at 14.03

Meanwhile back at the station the CI.117 Pressed Steel DMU had been in operation, initially working a shuttle up to Laverton and then heading a return service to Cheltenham.

Overall the day proved to be very enjoyable with the low cloud and drizzle that were present initially clearing away to be replaced by a sunny and bearably cold day. This is a line I think I will be visiting again.



left 37215 Toddington

below 47376 + 2807 departing
Toddington at 13.32

photos by Andrew Buckley



RAILWAY GLOBETROTTERS - I

Poland 2nd - 9th May 2015 by John Teasdale – Part 2 (final):

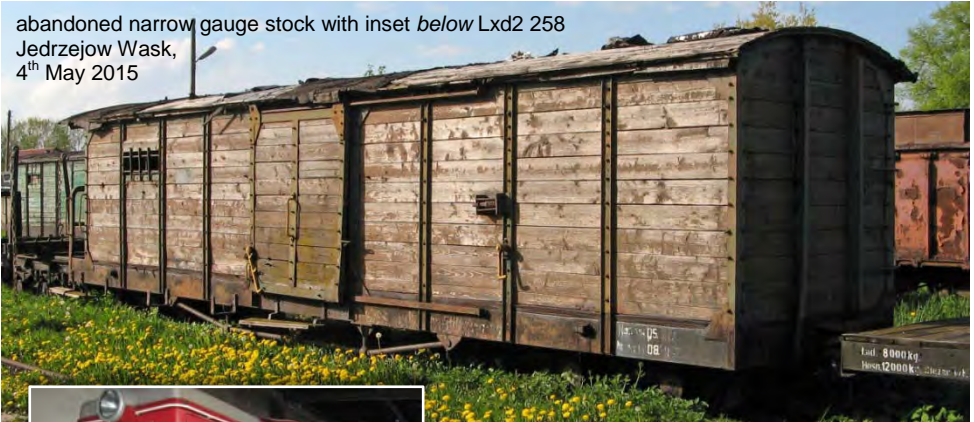
Monday the 4th began with a visit to the museum in the former Głowny station then it was on, firstly to the KM unit depot at Ochota then Skarzysko Kamienna.

right KM's EW60 001 and EN57 1826, Warszawa Ochota, 4th May 2015

We then visited the once extensive narrow gauge system at Jedrzejow Wask, where an enthusiastic owner happily took us into all the sheds to view the items of stock.



abandoned narrow gauge stock with inset *below* Lxd2 258 Jedrzejow Wask, 4th May 2015



Tarnow was an early call the following morning, Tuesday the 5th where, after an initial setback, we were allowed full access. Newly shopped articulated loco ET41 130 looked resplendent in the sunshine (photo opposite top).

Used on coal traffic in Silesia, the ET41 is basically two EU07 locos, minus two cabs, coupled in multiple so both sections have to be used for current collection. Also seen was ST43 388 which seemed to be awaiting a more ignominious fate (photo right).





Providing a contrast at Krakow Proccocim was SM42 3004 (photo below left), a 2014 Newag rebuild and a loco withdrawn in 1971, EP02 08 built in 1957, standing in isolation (photo below right).



KM's Piaszow depot had a brightly coloured array of new Regionaine EN77 units present (photo below) whilst at the rear, Omniloko's TEM2 032 was receiving some minor attention to its very lumpy sounding engine (photo overleaf).





After a brief nostalgia call at the former Fablok factory, we were made very welcome at Rail Polska's Włosienica depot. There was a very varied collection of locos present here, including TEM2, Ls300, 401Da, several ex Estonian locos and two USSR built M62M presenting M62M 010 ex-M62 1118 of Estonian Railways (see photo above left). Several rusting locos were in a line, clearly destined for scrapping. Last call of the day was at the PKP Cargo depot at Czechowice Dziedzice where EU07 307 was seen (photo above right), then it was off to our hotel in Kety.



above left CD 771 099
above right CD 122 047 4,
Ostrava, 6th May 2015



Crossing the border into the Czech Republic, our first calls on Wednesday 6th May were at Ostrava (CD Cargo) then CD Regional at Bohumin. We were given a full tour of this very extensive depot where several items of the CD historic fleet are maintained and a variety of types are based.

left part of the historic fleet,
1953 built E499 004, Bohumin



As well as some ex EWS CI.66 locos, the DB Schenker depot at Rybnik had the two Railion NS locos (6480 and 6487) currently being tested in Poland. These have not, as yet, received full approval and can only be used in industrial sidings. Railion (or DB Cargo) have a large number of stored locos in the Netherlands and these are clearly being seen as replacements for some of the older locos in Poland.

left Depot shunter 799 036, Bohumin

below left CD 163048, below right CD 742 366, Bohumin, 6th May 2015



CD 151 006 at Bohumin, 6th May 2015

311D 19, Sosnowiec Jezor, 7th May 2015

Thursday morning saw us at their Sosnowiec depot where several examples of CI.311D were present. First introduced in 2007 by Newag, these are rebuilds of Russian M62 / PKP ST44 locomotives with a GE engine.

Our final calls were at Jaworzno Szczakowa, where freshly painted SM31 151 was gleaming in the sunshine (photo overleaf) and the almost empty depot at Lazy which however hosted Koleje Slaskie EN76 004 (photo right).





Friday morning, the 8th May saw us first heading for Kotlarnia, a base for the sand railway operated by Kopainia Piassku, where several of their TEM2's were visible from the roadside.

Next was Kedzierzyn Kozle then Opole, where the depot chief had an impressive range of souvenirs on his office wall (photo below) but very little was on shed.



rebuilt SM42 1220, Opole, 8th May 2015

The next depot was Kamieniec Zabkowicki which had long lines of deteriorating locomotives, but as there were few people to be found, we walked around un-accosted



ST43 368, Kamieniec Zabkowicki, 8th May 2015



above SU45 052, Kamieniec Zabkowicki, 8th May 2015



Before heading for the hotel in Wroclaw for the evening, we made our final stops of the day at the Brochow and Glowny depots. Again, staff seemed happy to let us walk around unaccompanied and take whatever photographs we wanted. As well as several rebuilt SM42's, Glowny also contained several items from the historical fleet.

left SM42 802, Wroclaw Brochow, 8th May 2015

below rebuilt SM42 1003,
Wroclaw Glowny, 8th May 2015





*left preserved Ls40 5434,
Wroclaw Glowny, 8th May 2015*

All that then remained for Saturday was a quick call into Jelenia Gora where there were plenty of stored locos but all doors and gates welded shut! and Wegliniec before heading back to Berlin.

This had been my first visit to Poland and I look forward to a return...*this was in 2016 and there will be a further article in the New Year, ed.*

photos by John Teasdale

PRESERVATION NEWS - 2

Ecclesbourne Valley Railway:

A new building, accommodating a booking hall, was opened on the 19th October at Duffield, the southern terminus of the railway and on the former platform 3, which was brought back into operation in April 2011. It is adjacent the Network Rail station island platform 1 / 2 operated by East Midland Trains. The building painted in LM colours will also house a waiting room, shop and catering facilities. In the photos right & below taken on the 27th November 2016, the building can be seen from platform 2 on the NR station. Unfortunately the railway was closed so I could not gain access to the EVR platform.



Glyn Valley Tramway: A new Tramway Museum opened on the 17th November 2016 in the old Glyn Valley Tramway Loco shed at Glynceiriog, Wales. Though the line, opened in 1873, closed in 1935 the loco shed survived and a new station has been built. A section of track has been laid in the loco shed and alongside the platform with original rail which has the unusual gauge of 2'-4½". For more information visit their website <http://www.glynvalleytramway.org.uk/>

ACCIDENTS

This is an occasional series devoted to showing the various mishaps / crashes that have befallen rolling stock in the UK over the years including current incidents. If you have photos and any accompanying info, then please forward to the Editor...I am using up my current supply.

230001 Converted former LUL 'D' Stock 230001 on test from Tyseley to Nuneaton caught fire on the 30th November 2016 at the old Kenilworth station on the Coventry to Leamington Spa line and had to be attended to by the fire brigade. No members of the public were on board and there were no injuries. After what appears to be a fire caused by an fuel leak in one of the under carriage engines had been extinguished, 230001 was cleared to run to Coventry Yard under its own power. The proposed scheduled use in service on the Coventry to Nuneaton line stating in February has been cancelled due to commissioning being put back. It has also meant that its future use in the LM franchise has been abandoned and it unsure where the set can now be trialled.

377442 PTSOL 78842 from SR Electrostar 377442 was damaged in a fire at Eastbourne on the 28th November 2016 and has been dispatched to Wolverton Works for assessment as to whether it is repairable. Meanwhile the unit is running as a 3 car EMU re-numbered to 377342. The EMU was hauled north to Selhurst on the 14th December 2016 top & tailed by 37800 and 37884.

31436 On the 10th March 1986 while hauling the 18.33 Sheffield-Manchester 31436 collided with two stationary locos 45014 'The Cheshire Regiment' + 47334. Sadly the driver of 31436 was killed. 31436 (D5569 / 31151) built December 1959 was stored at Doncaster Works where it was seen in the undated photo right by Malcolm Wallace. It was subsequently officially withdrawn in October 1986 and cut up quite quickly in December 1986. 45014 (D137) built December 1961 having suffered a damaged underframe was withdrawn on the spot and was moved to Ashburys Yard, Manchester, from where it was cut up by Vic Berry who having chopped it into 3 parts removed it to Leicester for final disposal. 47334 (D1815) was undamaged and soldiered on until withdrawn in October 2001 with cutting in January 2005 at CF Booths.



56004, 31192 & 31314 On the 30th July 1982, 56004 hauling a coal train overran signals and struck 31314 + 31192 hauling petrol tanks head-on at Humber Road Jnct, Immingham. It was a single lead junction. Fortunately, there was no fire but petrol got into the drains disrupting the nearby town of Immingham for some days. 56004 a Romanian built loco in February 1977 was repaired with standard later style cabs but was finally withdrawn in April 1999 and cut up at CF Booths, Rotherham in July 2006. 31314 (D5848) built July 1962, was not so lucky, being withdrawn in September 1982 and cut up at Doncaster Works in February 1983. 31192 (D5615) built May 1960, was similarly withdrawn and cut up but a month later in both instances.



above & below 56004 & 31192 are seen at Doncaster Works, 3rd October 1982 (Colin Pottle)



RAILWAY GLOBETROTTERS - 2

Stockholm Central Station, Sunday 25th Sep 2016 by Spencer Billingham:

I must point out that this was not a railway trip but a weekend away with friends. We were staying in Kista and had to travel into Stockholm, about 15 mins by train to catch another train to Vasteras Airport, 90k from Stockholm and on the main line to Gothenburg. We travelled into Stockholm around 10.00 on EMU 2158 (see right) via the metro system, which is the best way to get round Stockholm and like London has colour coded lines and is cheap at £10 for a 24hr travelcard. I had convinced my friends to arrive at the station early for the onward connection, allowing me to wander off for a while, but did point out that the bar was open !!

right C20 Metro Train 2158 arriving at Kista with a route 11 service to Kungstradgarden via Stockholm Central (10.00)

Although Stockholm Central is Sweden's largest station with 19 platforms, at 10.15 on a Sunday morning I wasn't expecting much, especially as I only had 90 minutes before our train, but was very pleasantly surprised at how busy it was and packed platforms. I found the South end of platform 10 was best and had a level crossing right at the end of the platform. This also seemed to be the long distance Intercity platform for the Vastra Stambanan, the Western Main line which is no doubt the Swedish version of our WCML, being served with CI.143 locos.



Hector Rail 1384
Stockholm Central (10.24)

As both a through and terminus station it was split into sections, from which I could understand, with platforms 1 to 7 northbound serving Ostkustbanan (East coast main line), Malarbanan (Malaren Line)

and the Arlanda Line using platforms 1 and 2 for the Arlanda Express to Arlanda Airport. Platforms 10-19 served the West and South. All routes were easily identifiable by colour coded routes which made it easy for the foreign tourist.



Swedish class X40 3307 departing Stockholm Central with a Eskilstuna service (10.40)

Our service to Vasteras, the 11.45 departure to Gothenburg, was on an Alstom built SJ X40 double-decker, 3306 a first time for me on a double-decker train made up of 2 x 3 car units. The 90km journey took an hour and was extremely smooth with prices very reasonable at £14 each. Tickets are purchased from the travel centre and are paper A4 tickets with your name, route you are on, departure time and arrival time. Having to give my name was something different to buy a train ticket. There are no buffet or catering on these services and from viewing other services there appeared very little on any of their trains. The trains also seemed to run like clockwork and were very clean and tidy.



Arlanda Express arriving at Stockholm

photos by Spencer Billingham

FREIGHT MATTERS

To allow members to keep their copy **UK Wagons** as up to date as possible, changes are provided via this spot every month. Please let Trevor Roots know if you have any amendments or wish pass on any other helpful wagon information, contact details on page 2.

Thanks to the following for information: Alex Ford, Charles Baldwin

Stored: previously recorded as deleted **JIA Bogie Covered Hopper** 33.70.9382.000-5/049-2 still in the Doncaster area

New / Added to TOPS: **JNA Bogie Box** 81.70.5500.273-292 have been delivered

Converted / Re-coded:

MXA Bogie Open Box as happened with 82.70.4703.089-1 (965050), several of the previous 1980 converted 965xxx wagons are being returned to WH Davis to be scrapped as the donor underframe is faulty, probably weakened from the earlier conversion, the box will be re-used: 82.70.4703.087-5 (965033) / 186-5 (965079) 089-1

YEA Bogie 'Perch' 979402/403/411 converted to **YSA** HOBC conveyor support wagons

Re-numbered: 33.87.4908.635-8 to 31.70.4908.653-9

Re-numbered / Re-coded: **IIA Bogie Coal Hoppers** to **HYA Bogie Aggregate Hoppers** for GBRf
37.70.6791 003-6/005-1/006-9/013-5/015-0/021-8/024-2/025-9/036-6/039-0/052-3/055-6/059-8/
064-8/065-5/ 070-5/072-1/074-7/077-0 to 082-0/093-7
83.70.6957 003-9/005-4/006-2/013-8/015-3/021-1/024-5/025-2/036-9/039-3/052-6/055-9/059-1/
064-1/065-8/ 070-8/072-4/074-0/077-3 to 082-3/093-0

Removed from TOPS / For Scrap / Scrapped: 80160/166/168/567/569/576

St Blazey: 375021/29/119/122 **CF Booth, Rotherham:** 110741, 391047/57/62/66/69/71, 394156/
298/374/653/699, 395110/151/239/265/346/376, 110145/384

EMR Kingsbury: 967573/618

EMR Attercliffe: 110568/2109, 391135/211/320/362/410/502/517/531/535/547/598/623, 394341/
410/523/850/860, 395296/331, 396107/118, 980074/076/081/103/114/143/162/165/196/204/226/228

Mossend: 200346/359/363, 360392/544/578, 361578, 391130/250/336/356/469, 394525/551/569/
581/592/594/607/631/632/705/832/842/880/911/924/956/978, 396151, 400094/105/134/147/160-162/
179/186/203/204/216/227/242/248/266/268/271/273/288/292/293

Transferred to Internal Users: Celsa Steel, Cardiff 967512/518/530/552/554/622

Preserved: In book: CDA 353224 the prototype CDA hopper (National Wagon Preservation Group), 375088 (private), not in book: 210462 to Crewe Heritage Centre (private), ex-Drain Train ZRA tanks 999101/103 to Mid Hants Rly

OTP News:

right as reported in October 2016 issue

09-3X-D-RT Tamper / Liner / DTS

DR 73120 99.70.9123.120-6 is seen at
Nuneaton (14.46)

11th January 2017 (Brian Derricote)

New: **USP 6000NR Ballast Regulator** DR 77010 (99.70.9125.010-7) built by Plasser & Theurer 2016 for Network Rail arrived in the UK in early December 2016.

Based in Europe, Schwebbau RGM Rail Grinder 1120990499 PC1-SC1-GC1-GC2-PC2 is in the UK at the moment working on London Underground. It was last in the UK in February 2015.

FREIGHT NEWS Greenbrier and Astra Rail have merged to form a new company Greenbrier – Astra Rail which has its head office in the Netherlands.



GBRf has taken over the weekly 6S94 02.03 Dollands Moor - Irvine (Caledonian Paper) loaded china clay. The first northbound run operated on the 4th January 2017 with 92044 + 92032 through the tunnel then 92032 to Carlisle Kingmoor. With the train now routed via the non electrified GSW line from Gretna Junction via Dumfries and Ayr, diesel traction now takes over at Carlisle rather than Mossend with 66730 working as 6S94 on from Kingmoor Yard to Irvine.

A new freight working from China arrived in the UK on the evening of the 17th January 2017. 92015 then hauled the train from Dollands Moor to Ripple Lane where on the following morning, the 18th, the final leg to Barking freight Terminal had 66136 propelling from the rear. Welcome banners were broken and the press were in attendance for the occasion. This new freight working had set out from China on 1st January and was trans-shipped en route due to the different gauge in Russia. Both locos have been adorned with decals and the branding "YIWU – LONDON TRAIN" with 66136 repainted into DBC red (see below), 92015 was red already.



above on other duties 66136 t&t 66057 on 6R06 North Wembley Jct - Bescot passes Wilson's Farm Crossing, Northampton (12.24) 22nd January 2017 (Colin Pottle)

Freight has returned to the Looe branch for the first time in several years with cement workings from Moorswater Lafarge to Aberthaw operated by Colas Rail. The first run was on the 1st December 2016.

As part of the contract to move biomass from Port of Tyne to Lynemouth PS, the operator GBRf will build 50 new hoppers, due to enter service in October 2017 with trains running 27 times per week.

OTP PHOTO SPOT



left
the only SB Rail
operated **08-4x4/S-RT**
Switch & Crossing
Tamper / Liner
(1 of 7)
DR 73904
'Thomas Telford',
Wrexham Central
(10.30)
12th January 2017
(Martin Evans)

STOCK CHANGES

It is hoped that all major changes recorded below will help you keep the **UK Combine, Pocket Book and Name Directory** up to date, (numerous pool code changes will not be recorded). In order to compile as accurate and up to date list as possible, can members please pass on their observations, particularly name changes and multiple unit reformations to the editor, **Trevor Roots**. Where possible, photos of new nameplates will be included as and when a suitable photo is sourced from members.

Misc. News:

DBC have stood down their last 3 remaining Cl.08/09 shunters. Of the 24 offered for sale several have now moved to their new owners though the sale of 08757 to TBR fell through, but has since moved to TSR.

67023/027 have been bought by Colas.

More DBC Cl.66s have received corporate red: 66041/128/136/149/150.

Several Riviera coaches have moved to ZG from EH or BO (see new Combine for more detail).

92015 & 66136 have received advertising decals and branding in association with a new freight flow from China (se **FREIGHT MATTERS**).

Cl.319s are moving to LM for store.

Locos Repatriated: (from France)

66022 66052

Locos Sent Abroad: (to Bulgaria) 92022

New:

EMUs: (* on test)

345002* 385001* 385102* 387140*

387141* 387143* 700015* 700018*

700030* 700115* 707001* 707003*

707004* 707005*

Re-numbered: 37703 to 37067

Refurbished & Re-numbered DMUs: (2 car)

170306 to 168326 170307 to 168327

Re-numbered Units: (temporary)

158957 formed 57747 (158954) + 57748

170111 formed 50111 + 55104 + 79111

377342 to 377442 (minus 78842)

Transferred: (* into preservation)

Locos: (* into preservation)

D2334 CHV to MNR 20057 MRB to CHV

08495* CE to NYM 08633* ZJ to CHV

08752 BS to ZD 08757* CE to TSR

08879 MG to ZG 08888* HOO to KES

08784*/08922* TO to GCN

20057 MRB to CHV 26007 to (BH)

31465 LM to WEA 37413 ZA to BH

67023/027 to RU

LHCS: DVT 82113 LM to BT

DMUS: 51813/51842 WEN to ELR

EMUs: 319214/451/453 Cricklewood to (LM)

Steam Status:

6201 A to O 7828 A to O 30053 A to O

For Scrap:

CF Booth, Rotherham 37194

EMR, Kingsbury 373003/004/207

Scrapped:

France 373203/204
from AV Dawson 08807

Names:

08460 SPIRIT OF THE OAK
08624 Rambo Paul Ramsey
37608 Andromeda
68010 Oxford Flyer
91130 Lord Mayor of Newcastle
Proudly celebrating 800 Years of
Newcastle's Mayoralty 1216-2016



37608 (Carl Watson)



91130 (Andrew Turnidge)

Recent but not Previously Illustrated:



37099 as reported in Dec 2016 (Carl Watson)
the plate reads " This locomotive has been named in memory of Merl Evans, in recognition of his outstanding contribution to British model railways during his working career at Palitoy and Bachmann Europe plc."



66066 as reported in Oct 2016 (Carl Watson)

Names Removed:

08495 Noel Kirton OBE
43004 First for the future
92002 Charles Dickens
373003/004 Tri-City-Athlon 2010

NEW STOCK



above top 88002 'Prometheus' on its way to DRS Carlisle Kingmoor at Redbridge Roundabout on its way north from Southampton Eastern Docks
22nd January 2017 (Ian Knight)

above centre
387140 + 387141 Crewe (13.20)
3rd January 2017 (Martin Evans)

right 700028 Bedford (12.29)
12th January 2017 (Graham Stockton)



above 387139 Nuneaton (14.55) 5th January 2017 (Mike Rumens)



above 387143 + 387144 Tamworth LL (14.47) 23rd January 2017 (Peter Davis)

below 707003 Clapham Jnct Yard (08.53) 20th January 2017 (Colin Pottle)



LIVERIES

*This section will endeavour to show all new liveries / variations or those existing ones where not carried on the stock before. Liveries that become 'extinct' will also be covered. As with names, it may take a while after the livery application before a photo is sourced from members. New liveries may also be shown in other articles: 08454, 37608 in **EASTLEIGH WORKS REPORT**, 66136 in **FREIGHT MATTERS**.*



above unveiled in September here is a side on view of 20142 now named 'Sir John Betjeman' Clapham Jct, 22nd December 2016 (Paul Sumpter)



left 08956 at Asfordby Test Centre 3rd December 2016 (Colin Pottle)

below 321304 the second GA Renatus CI.321/3 departs Ipswich carrying various VIPs as 2Y22 11.47 Southend - Ipswich calling at Shenfield, Chelmsford, Witham, Colchester and Manningtree then ran as 5V51 14.48 to Ilford EMUD instead of Liverpool St due to a faulty air conditioning unit 16th December 2016 (Keith Partlow)





66149 now in red sporting the new large DB logo
Eastleigh (13.05) 23rd January 2017
(Carl Watson)



above 68015 sporting Chiltern Railways branding on 1R15 Marylebone - Birmingham Moor Street,
Marylebone (07.42) 20th January 2017 (Colin Pottle)



above more of an ex-livery, 47790, previously Northern Belle livery,
Crewe 10th January 2017 (Roy Hitchin)

ICRS SALES

We have now published 10 books since 2009, 2 are currently unavailable having sold out, 4 are no longer produced and 4 of are in print with 1 currently available and 3 new 2017 editions due soon (orange covers). Only four books, UKRS01-04 will be released as new editions in 2017 with new editions of UKRS10 & 11 due in 2017/18.

Books and Sundries can be ordered either:

online via PayPal at www.intercityrailwaysociety.org or by post from
ICRS, Mill of Botary, Cairnie, Huntly Aberdeenshire AB54 4UD

Please make cheques payable to **ICRS**, Post & Packing is **FREE** to the **UK**

Whilst we do our very best to dispatch books as soon as possible, we are all volunteers, so please allow 14 days for delivery, especially when a new book has just been released.

If you have not received your book after that time please **ONLY** then contact **Trevor / Christine** (see p2 for details)

All books, except **UKRS01 Pocket Book**, are A5 wire bound allowing them to be laid flat and are printed on 90gsm paper with plasticised coated covers which do not delaminate.



BOOKS: (Members receive up to 30% discount on ICRS books)

Titles:	New:	Others:		Updated to	Prices	
					Member	Non Member
	UKRS01	UK Pocket Book 2017	DUE EARLY APR	(1 st Mar17)	£8.00	£11.00
	UKRS02A	UK Combine 2017		(23 rd Jan17)	£12.50	£17.00
	UKRS03	UK Wagons 2017	DUE MID MAR	(1 st Mar17)	£10.00	£13.50
	UKRS04	UK Name Directory (next ed. due Summer 2017)		(1 st Dec14)	£10.50	£14.50
	UKRS09	Irish Railways 2015	DISCONTINUED	(1 st May15)	£7.00	£9.50
	UKRS10	Ultimate Sighting File Vol.1 – Mainline Diesel Locomotives			SOLD OUT (next ed. due 2017/18)	
	UKRS11	Ultimate Sighting File Vol.2 – Shunters, Mainline Electric & Prototype Locomotives			SOLD OUT (next ed. due 2017/18)	

SUNDRIES:

Pocket Book cover		£1.50	£2.50
TRACKS A5 Cordex binder (takes 12 issues @ 48 or 64 pages – 2014-16)	LARGE		£5.00
TRACKS A5 Cordex binder (takes 12 issues @ 32 or 40 pages – 2011-13 & 17)	MEDIUM		£5.00
White Polo Shirts (sizes available - SMALL			£7.50
Navy Polo Shirts (sizes available - SMALL / MEDIUM / LARGE / XL)			£12.50